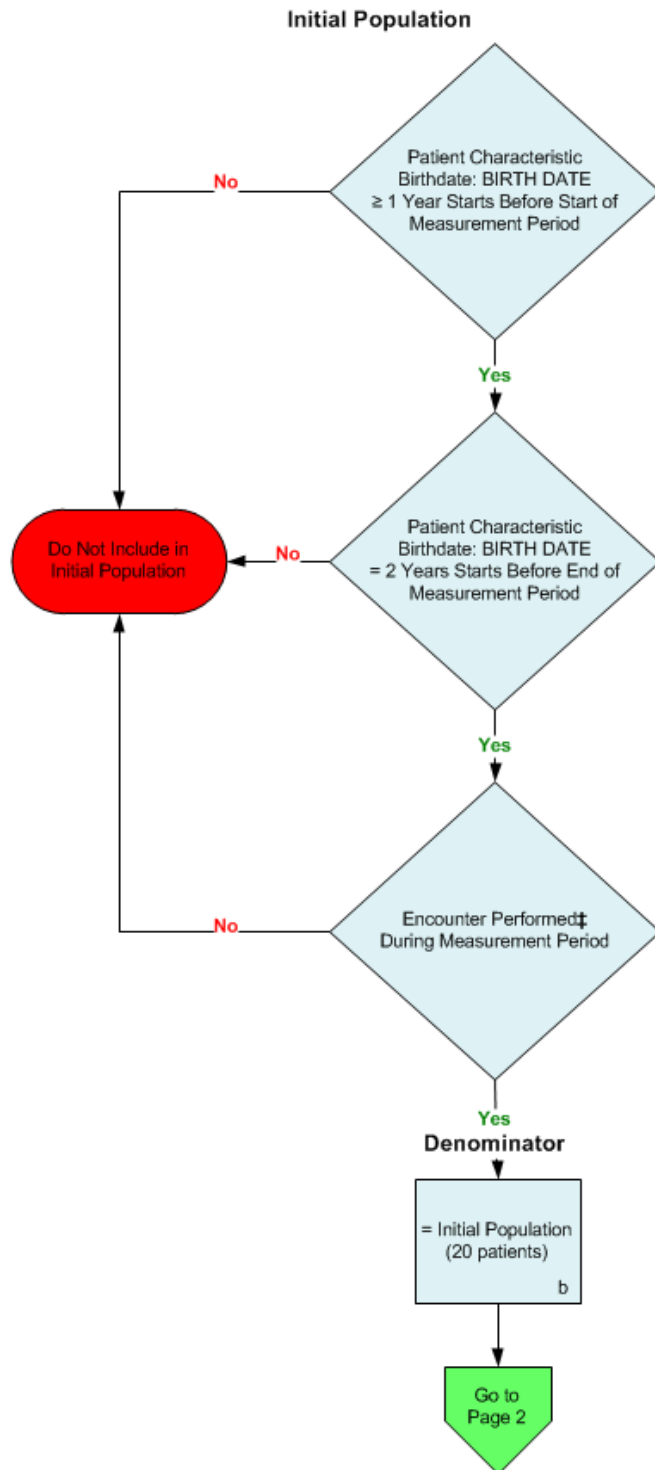
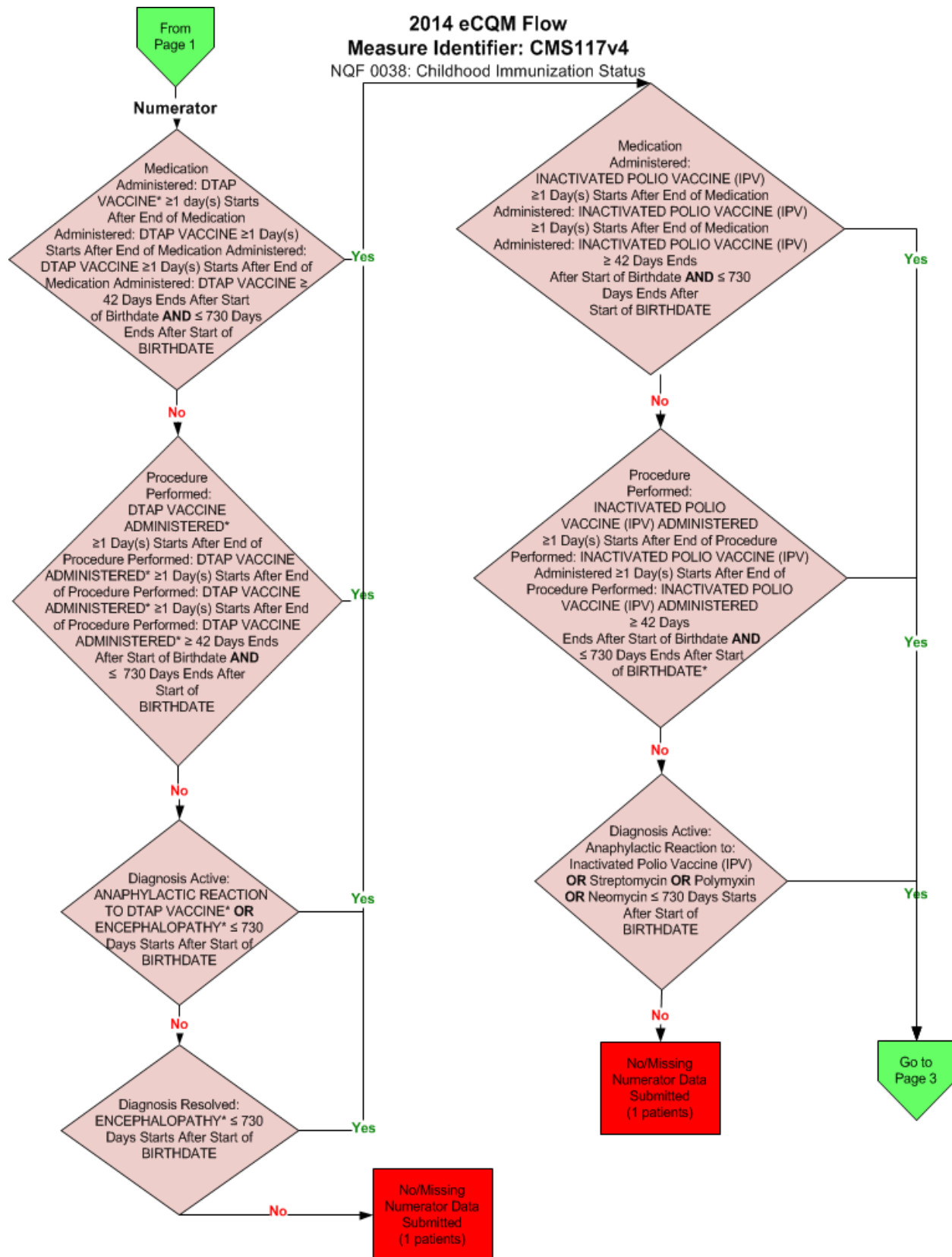


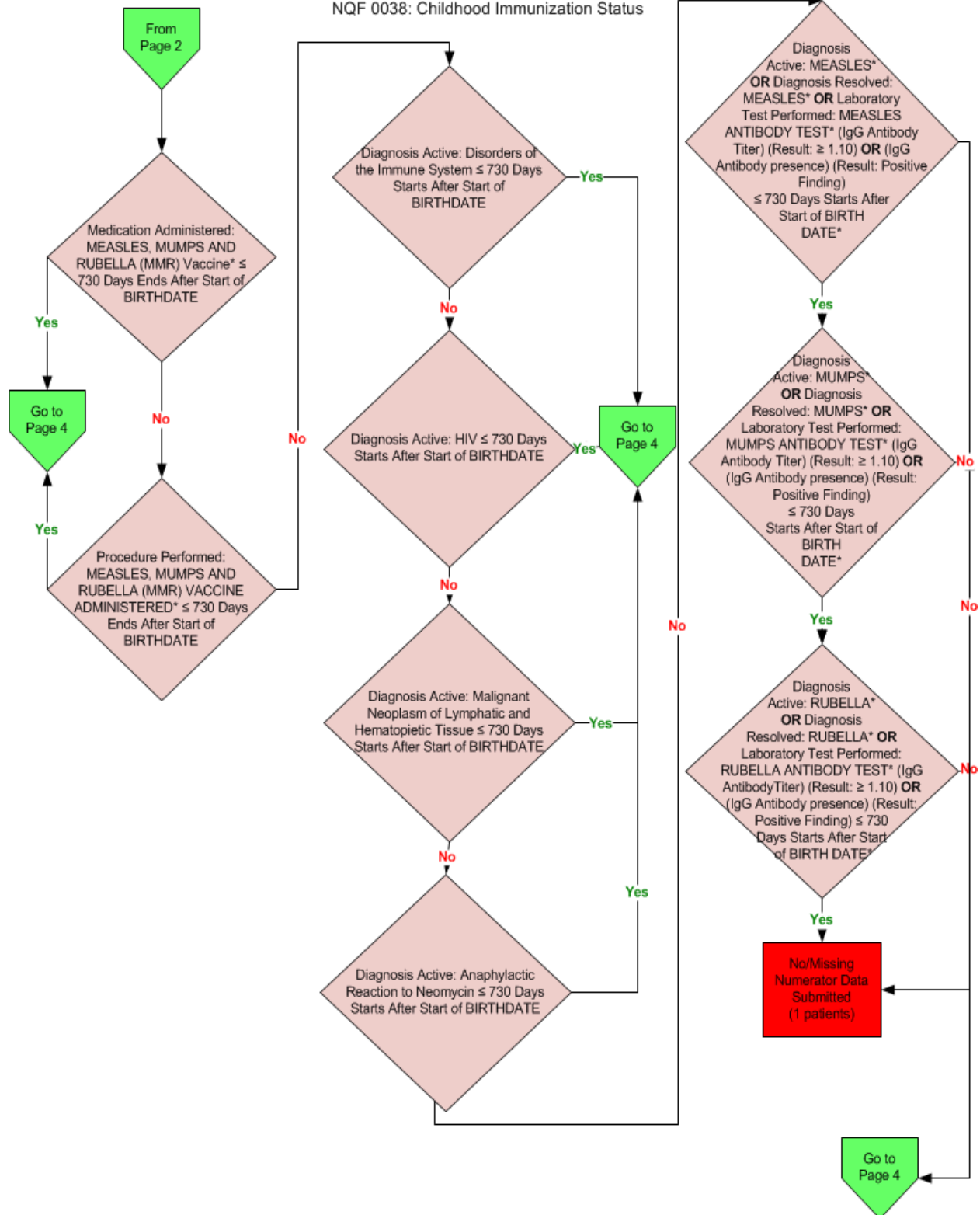
2014 eCQM Flow
Measure Identifier: CMS117v4
0038: Childhood Immunization Status



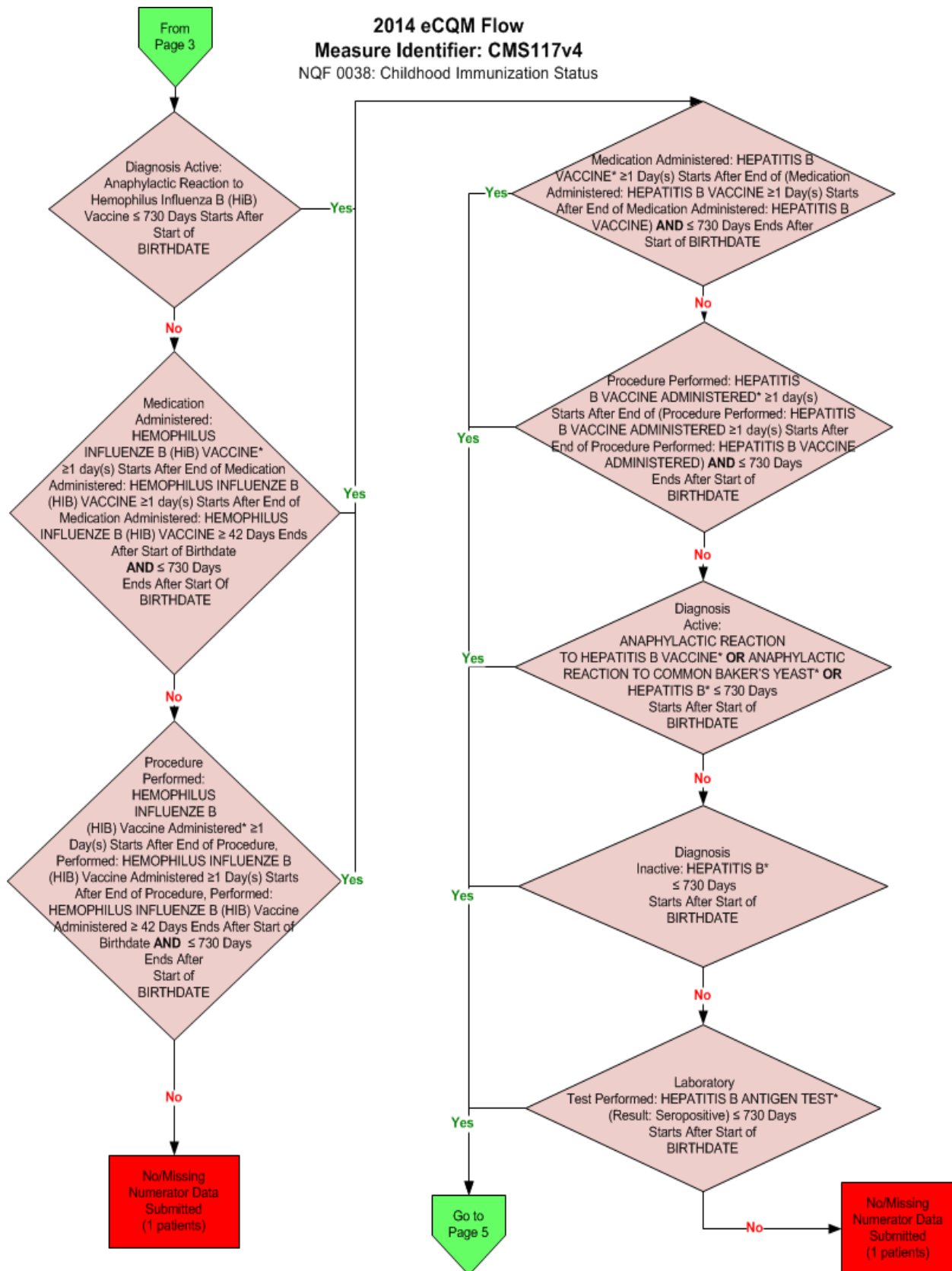
*Please refer to the specific section of the eCQM to identify the QDM data elements and associated value sets for use in reporting this eCQM measure.
‡For a listing of appropriate encounters, please refer to the Population Criteria and associated value sets as specific data elements have not been listed.



2014 eCQM Flow
Measure Identifier: CMS117v4
 NQF 0038: Childhood Immunization Status

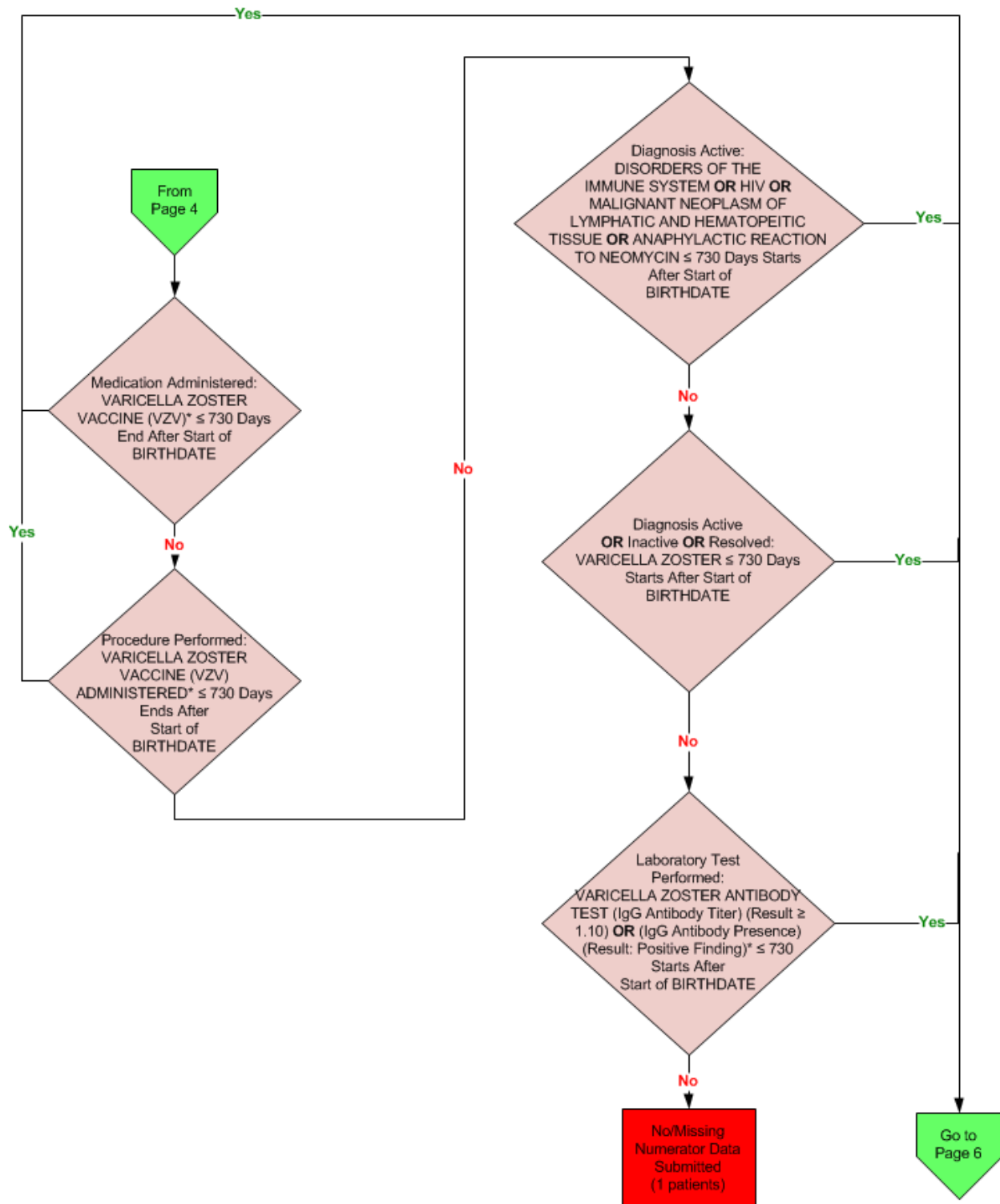


*Please refer to the specific section of the eCQM to identify the QDM data elements and associated value sets for use in reporting this eCQM measure.



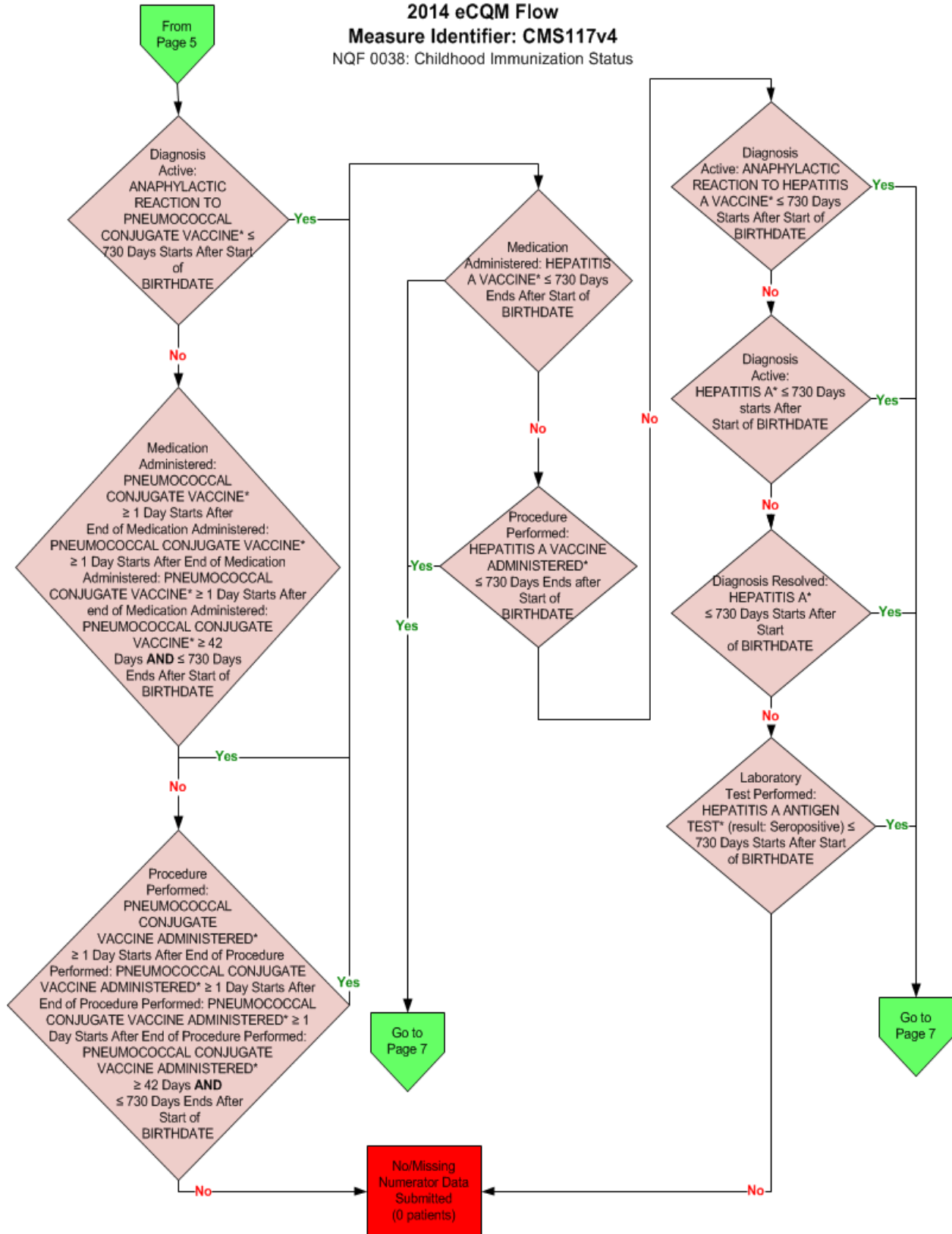
*Please refer to the specific section of the eCQM to identify the QDM data elements and associated value sets for use in reporting this eCQM measure.

2014 eCQM Flow
Measure Identifier: CMS117v4
 NQF 0038: Childhood Immunization Status



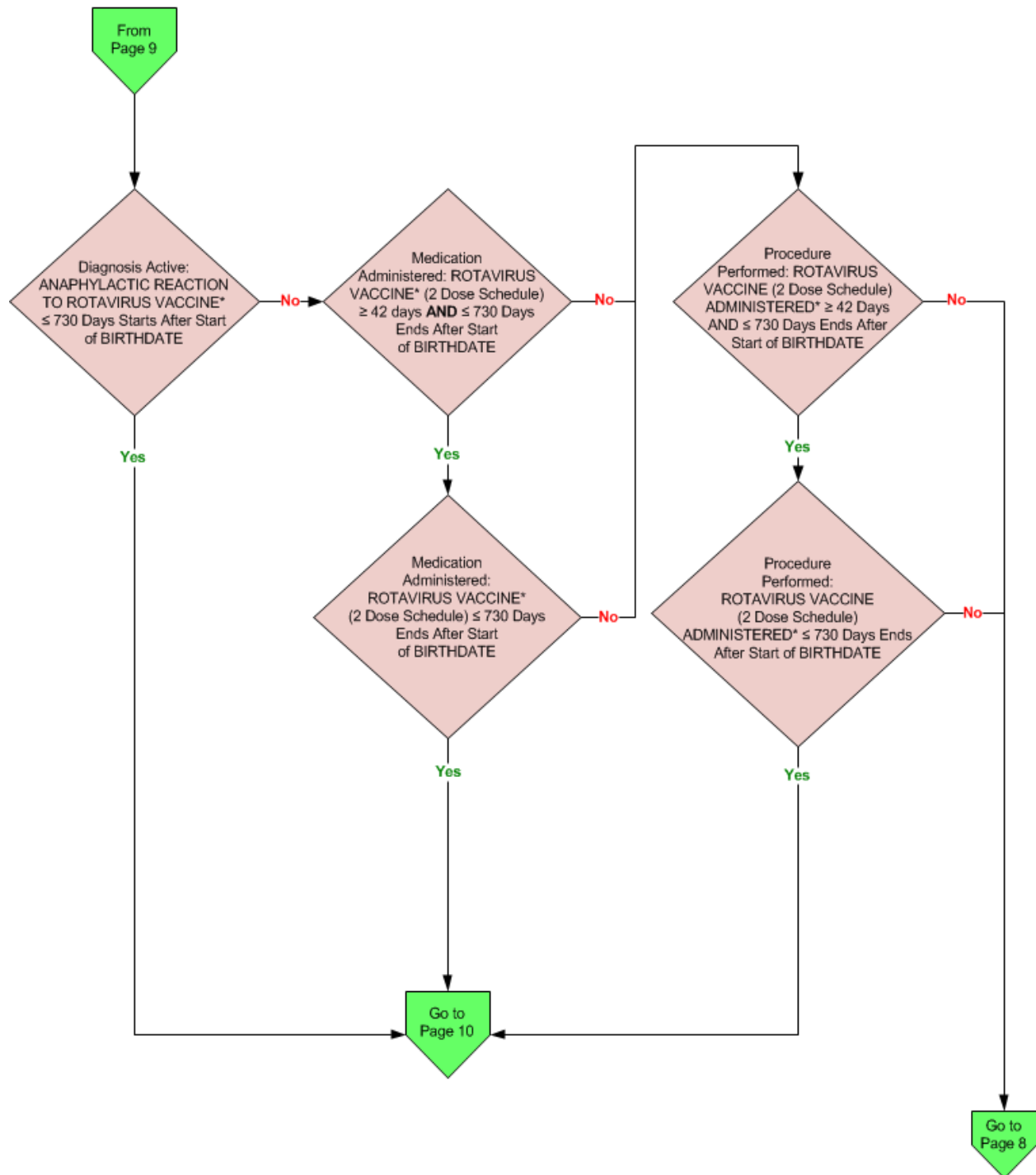
*Please refer to the specific section of the eCQM to identify the QDM data elements and associated value sets for use in reporting this eCQM measure.

2014 eCQM Flow
Measure Identifier: CMS117v4
 NQF 0038: Childhood Immunization Status



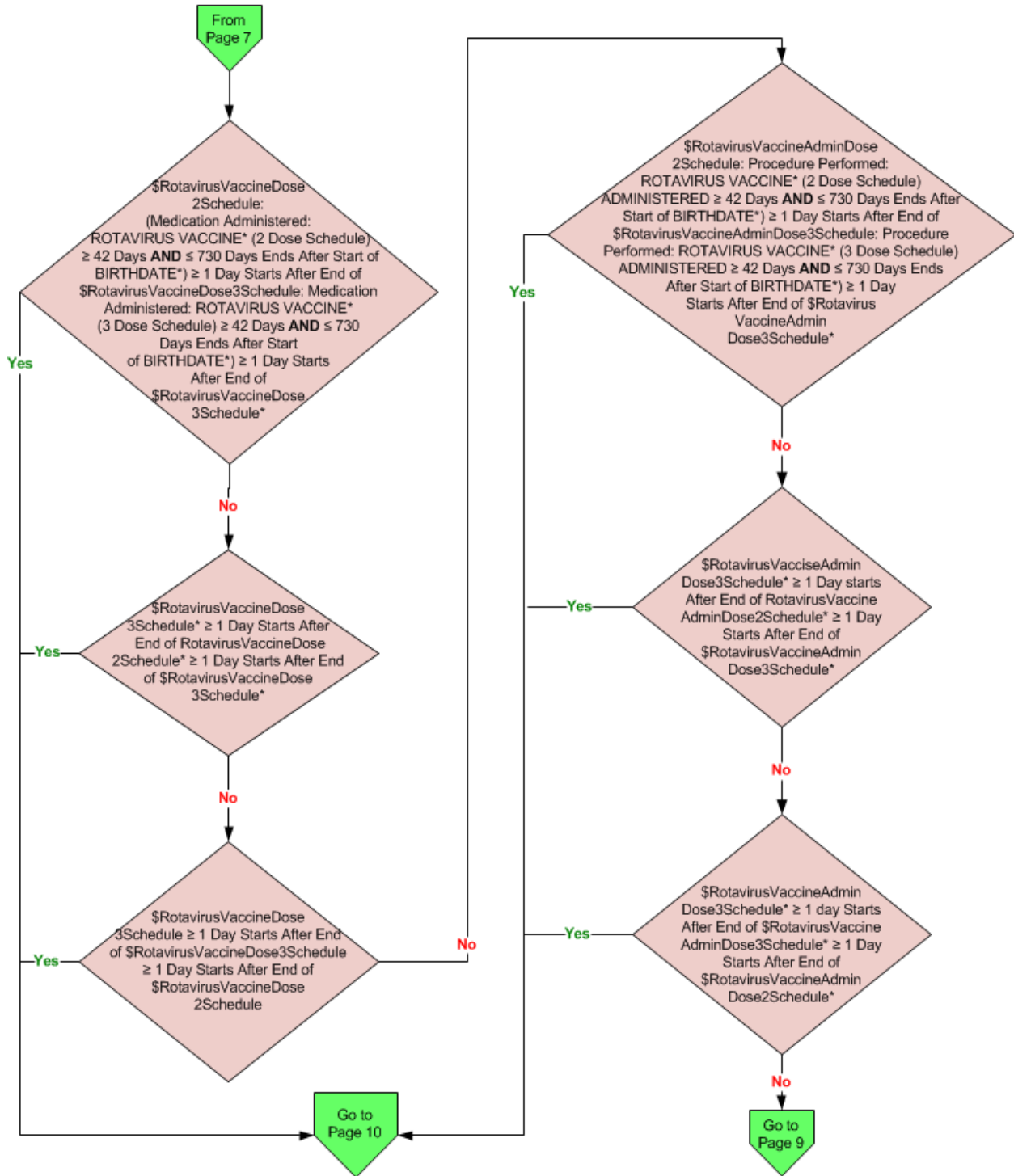
*Please refer to the specific section of the eCQM to identify the QDM data elements and associated value sets for use in reporting this eCQM measure.

2014 eCQM Flow
Measure Identifier: CMS117v4
 NQF 0038: Childhood Immunization Status



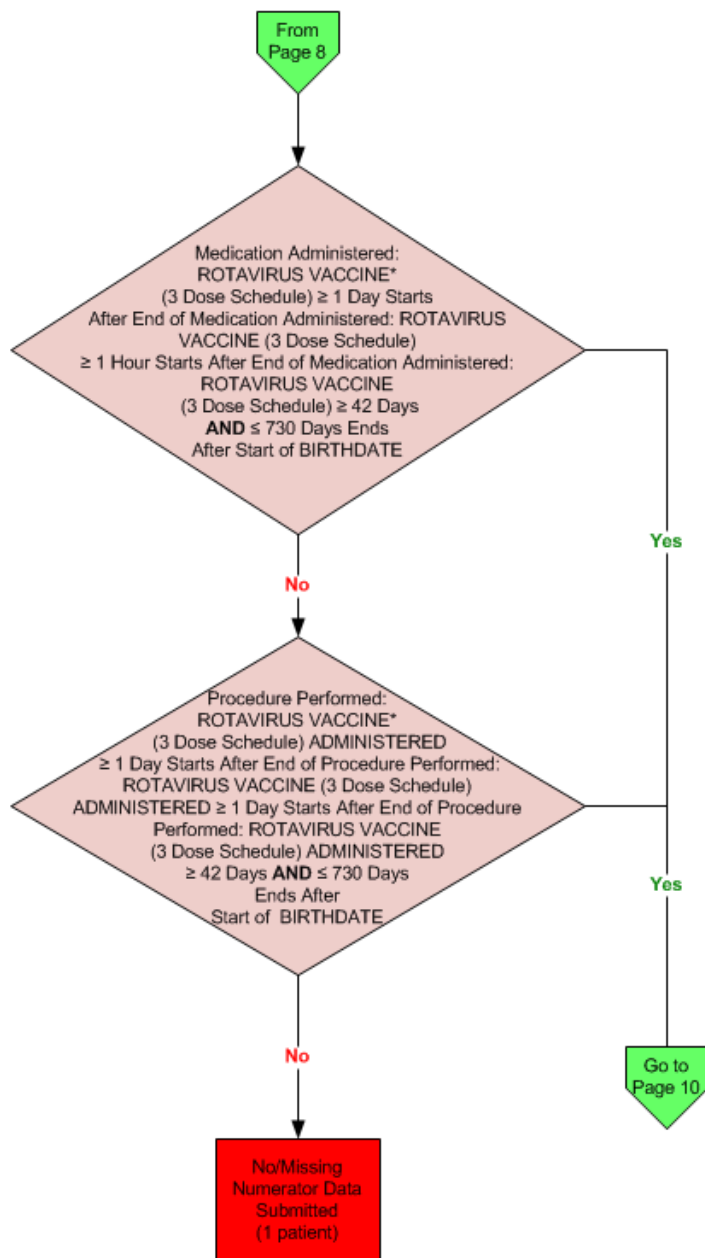
*Please refer to the specific section of the eCQM to identify the QDM data elements and associated value sets for use in reporting this eCQM measure.

2014 eCQM Flow
Measure Identifier: CMS117v4
NQF 0038: Childhood Immunization Status



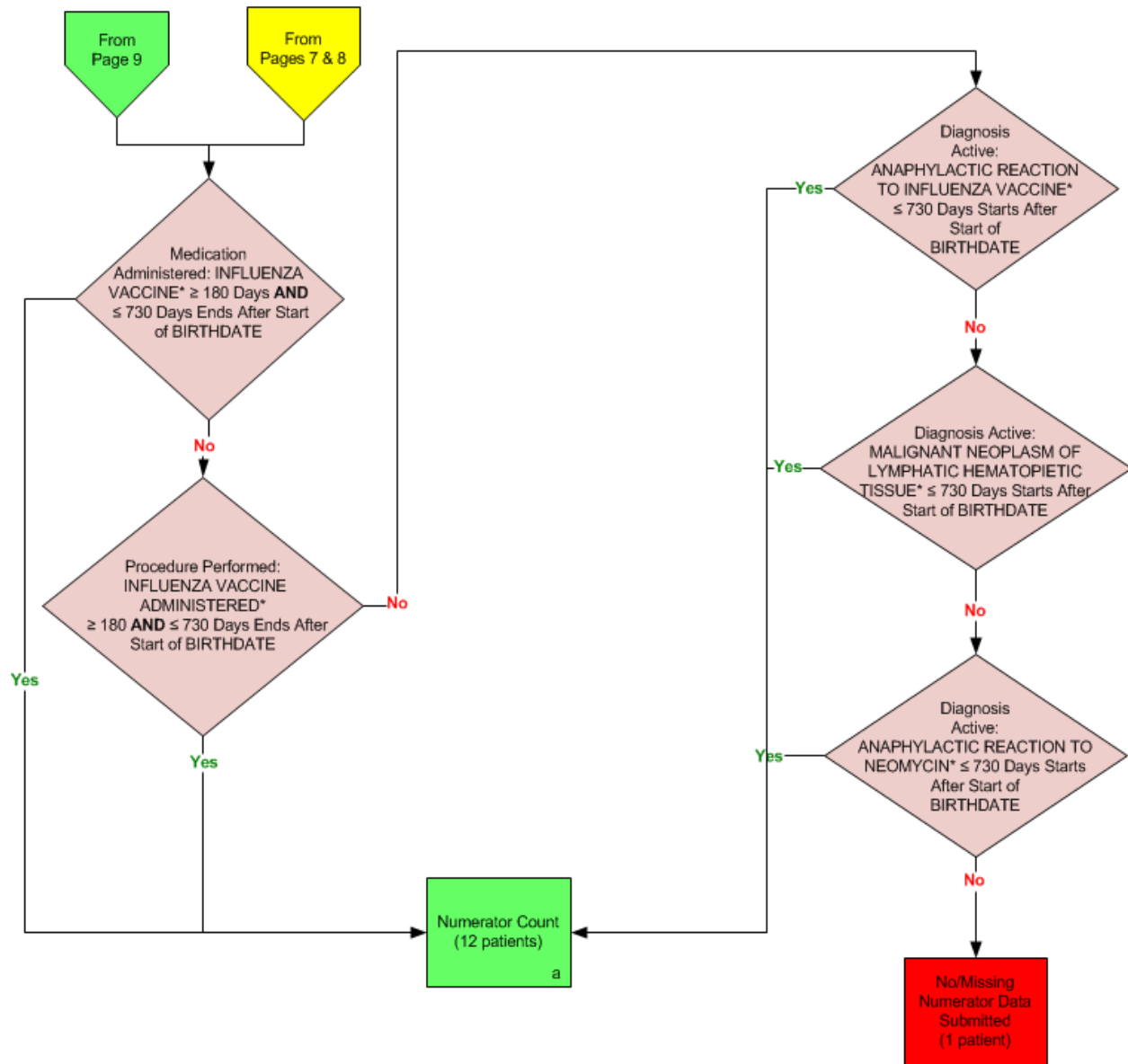
*Please refer to the specific section of the eCQM to identify the QDM data elements and associated value sets for use in reporting this eCQM measure.

2014 eCQM Flow
Measure Identifier: CMS117v4
 NQF 0038: Childhood Immunization Status



*Please refer to the specific section of the eCQM to identify the QDM data elements and associated value sets for use in reporting this eCQM measure.

2014 eCQM Flow
Measure Identifier: CMS117v4
 NQF 0038: Childhood Immunization Status



*Please refer to the specific section of the eCQM to identify the QDM data elements and associated value sets for use in reporting this eCQM measure.

SAMPLE CALCULATION:

Performance Rate =

$$\frac{\text{Numerator (a=12 patients)}}{\text{Denominator (b=20 patients) - Denominator Exclusions (N/A) - Denominator Exceptions (N/A)}} = 60.00\%$$

2014 eCQM Flow
Measure Identifier: CMS117v4
NQF 0038: Childhood Immunization Status

Please refer to the specific section of the eCQM to identify the Population Criteria and associated value sets for use in reporting this eCQM.

1. Start Initial Population
2. Check Patient Characteristic Birthdate:
 - a. If the Patient Characteristic, BIRTHDATE, is greater than or equal to 1 year starts before start of measurement period equals No, do not include in Initial Population. Stop Processing.
 - b. If the Patient Characteristic, BIRTHDATE, is greater than or equal to 1 year starts before start of measurement period equals Yes, proceed to check Patient Characteristic Birthdate.
3. Check Patient Characteristic Birthdate:
 - a. If the Patient Characteristic, BIRTHDATE, is equal to 2 years starts before end of measurement period equals No, do not include in Initial Population. Stop Processing.
 - b. If the Patient Characteristic, BIRTHDATE, is equal to 2 years starts before end of measurement period equals Yes, proceed to check Encounter Performed.
4. Check Encounter Performed:
 - a. If the Encounter Performed QDM data element, OFFICE VISIT equals No, during measurement period, proceed to check next Encounter Performed.
 - b. If the Encounter Performed QDM data element, OFFICE VISIT equals Yes, during measurement period, include in the Initial Population and proceed to the Denominator.
 - c. If the Encounter Performed QDM data element, FACE-TO-FACE INTERACTION equals No, during measurement period, proceed to check next Encounter Performed.
 - d. If the Encounter Performed QDM data element, FACE-TO-FACE INTERACTION equals Yes, during measurement period, include in the Initial Population and proceed to the Denominator.
 - e. If the Encounter Performed QDM data element, HOME HEALTHCARE SERVICES equals No, during measurement period, proceed to check next Encounter Performed.
 - f. If the Encounter Performed QDM data element, HOME HEALTHCARE SERVICES equals Yes, during measurement period, include in the Initial Population and proceed to the Denominator.
 - g. If the Encounter Performed QDM data element, PREVENTIVE CARE – ESTABLISHED OFFICE VISIT, 0 to 17 equals No, during measurement period, proceed to check next Encounter Performed.

- h. If the Encounter Performed QDM data element, PREVENTIVE CARE – ESTABLISHED OFFICE VISIT, 0 to 17 equals Yes, during measurement period, include in the Initial Population and proceed to the Denominator Performed.
 - i. If the Encounter Performed QDM data element, PREVENTIVE CARE – INITIAL OFFICE VISIT, 0 to 17 equals Yes, during measurement period, include in the Initial Population and continue on to the Denominator.
 - j. If the Encounter Performed QDM data element, PREVENTIVE CARE – INITIAL OFFICE VISIT, 0 to 17 equals No, during measurement period, do not include in the Initial Population. Stop Processing.
5. Start Denominator
- a. Denominator equals the Initial Population. Denominator is represented by Letter b in the sample calculation listed at the end of this document. Letter b equals 20 patients in the sample calculation.
6. Start Numerator
7. Check Medication Administered: DTaP Vaccine:
- a. If the Medication Administered QDM data element, DTAP VACCINE, greater than or equal to 1 day starts after end of the QDM data element, DTAP VACCINE, greater than or equal to 1 day starts after end of the QDM data element, DTAP VACCINE, greater than or equal to 1 day starts after end of the QDM data element, DTAP VACCINE, greater than or equal to 42 days ends after start of the QDM data element, BIRTHDATE, and less than or equal to 730 days ends after start of the QDM data element, BIRTHDATE equals No, proceed to check line Procedure Performed: DTAP Vaccine.
 - b. If the Medication Administered QDM data element, DTAP VACCINE, greater than or equal to 1 day starts after end of the QDM data element, DTAP VACCINE, greater than or equal to 1 day starts after end of the QDM data element, DTAP VACCINE, greater than or equal to 1 day starts after end of the QDM data element, DTAP VACCINE, greater than or equal to 42 days ends after start of the QDM data element, BIRTHDATE, and less than or equal to 730 days ends after start of the QDM data element, BIRTHDATE equals Yes, proceed to check Medication Administered: Inactivated Polio Vaccine.
8. Check Procedure Performed: DTaP Vaccine:
- a. If the Procedure Performed QDM data element, DTAP VACCINE ADMINISTERED, greater than or equal to 1 day starts after end of the QDM data element, DTAP VACCINE ADMINISTERED, greater than or equal to 1 day starts after end of the QDM data element, DTAP VACCINE ADMINISTERED, greater than or equal to 1 day starts after end of the QDM data element, DTAP VACCINE ADMINISTERED, greater than or equal to 42 days ends after start of the QDM data element, BIRTHDATE, and less than or equal to 730 days ends after start of the QDM data element, BIRTHDATE equals No, proceed to check line Diagnosis Active: Anaphylactic Reaction to DTaP Vaccine or Encephalopathy.

- b. If the Procedure Performed QDM data element, DTAP VACCINE ADMINISTERED, greater than or equal to 1 day starts after end of the QDM data element, DTAP VACCINE ADMINISTERED, greater than or equal to 1 day starts after end of the QDM data element, DTAP VACCINE ADMINISTERED, greater than or equal to 1 day starts after end of the QDM data element, DTAP VACCINE ADMINISTERED, greater than or equal to 42 days ends after start of the QDM data element, BIRTHDATE, and less than or equal to 730 days ends after start of the QDM data element, BIRTHDATE equals Yes, proceed to check Medication Administered: Inactivated Polio Vaccine.
- 9. Check Diagnosis Active: Anaphylactic Reaction to DTaP Vaccine or Encephalopathy:
 - a. If the Diagnosis Active QDM data element, ANAPHYLACTIC REACTION TO DTAP VACCINE, or the QDM data element, ENCEPHALOPATHY, less than or equal to 730 days starts after start of the QDM element, BIRTHDATE equals No, proceed to check Diagnosis Resolved: Encephalopathy.
 - b. If the Diagnosis Active QDM data element, ANAPHYLACTIC REACTION TO DTAP VACCINE, or the QDM data element, ENCEPHALOPATHY, less than or equal to 730 days starts after start of the QDM element, BIRTHDATE equals Yes, proceed to check Medication Administered: Inactivated Polio Vaccine (IPV).
- 10. Check Diagnosis Resolved: Encephalopathy:
 - a. If the Diagnosis Resolved QDM data element, ENCEPHALOPATHY, less than or equal to 730 days starts after start of the QDM data element, BIRTHDATE equals No, include in the No/Missing Data Submitted count. Stop Processing.
 - b. If the Diagnosis Resolved QDM data element, ENCEPHALOPATHY, less than or equal to 730 days starts after start of the QDM data element, BIRTHDATE equals Yes, proceed to check Medication Administered: Inactivated Polio Vaccine (IPV).
- 11. Check Medication Administered: Inactivated Polio Vaccine (IPV):
 - a. If the Medication Administered QDM data element, INACTIVATED POLIO VACCINE (IPV), greater than or equal to 1 day starts after end of the QDM data element, INACTIVATED POLIO VACCINE (IPV), greater than or equal to 1 day starts after end of the QDM data element, INACTIVATED POLIO VACCINE (IPV), greater than or equal to 1 day starts after end of the QDM data element, INACTIVATED POLIO VACCINE (IPV), greater than or equal to 42 days ends after start of the QDM data element, BIRTHDATE, AND less than or equal to 730 days ends after start of the QDM data element, BIRTHDATE equals No, proceed to check Procedure Performed: Inactivated Polio Vaccine (IPV).
 - b. If the Medication Administered QDM data element, INACTIVATED POLIO VACCINE (IPV), greater than or equal to 1 day starts after end of the QDM data element, INACTIVATED POLIO VACCINE (IPV), greater than or equal to 1 day starts after end of the QDM data element, INACTIVATED POLIO VACCINE (IPV), greater than or equal to 1 day starts after end of the QDM data element, INACTIVATED POLIO VACCINE (IPV), greater than or equal to 42 days ends after start of the QDM data element, BIRTHDATE, AND less than or equal to 730 days ends after start of the QDM data element,

BIRTHDATE equals Yes, proceed to check Medication Administered: Measles, Mumps and Rubella (MMR).

12. Check Procedure Performed: Inactivated Polio Vaccine (IPV):

- a. If the Procedure Performed QDM data element, INACTIVATED POLIO VACCINE (IPV) ADMINISTERED, greater than or equal to 1 day starts after end of the QDM data element, INACTIVATED POLIO VACCINE (IPV) ADMINISTERED, greater than or equal to 1 day starts after end of the QDM data element, INACTIVATED POLIO VACCINE (IPV) ADMINISTERED, greater than or equal to 42 days ends after start of the QDM data element, BIRTHDATE, AND less than or equal to 730 days ends after start of the QDM data element, BIRTHDATE equals No, proceed to check line Diagnosis Active: Anaphylactic Reaction to Inactivated Polio Vaccine (IPV), or Streptomycin, or Polymyxin, or Neomycin.
- b. If the Procedure Performed QDM data element, INACTIVATED POLIO VACCINE (IPV) ADMINISTERED, greater than or equal to 1 day starts after end of the QDM data element, INACTIVATED POLIO VACCINE (IPV) ADMINISTERED, greater than or equal to 1 day starts after end of the QDM data element, INACTIVATED POLIO VACCINE (IPV) ADMINISTERED, greater than or equal to 42 days ends after start of the QDM data element, BIRTHDATE, AND less than or equal to 730 days ends after start of the QDM data element, BIRTHDATE equals Yes, proceed to check Medication Administered: Measles, Mumps and Rubella (MMR) Vaccine.

13. Check Diagnosis Active: Anaphylactic Reaction to Inactivated Polio Vaccine (IPV), or Streptomycin, or Polymyxin, or Neomycin:

- a. If the Diagnosis Active QDM data element, ANAPHYLACTIC REACTION TO INACTIVATED POLIO VACCINE (IPV), or the QDM data element, STREPTOMYCIN, or the QDM data element, POLYMYXIN, or the QDM data element, NEOMYCIN, less than or equal to 730 days starts after start of the QDM element, BIRTHDATE equals No, proceed to check include in No/Missing Data Submitted. Stop Processing.
- b. If the Diagnosis Active QDM data element, ANAPHYLACTIC REACTION TO INACTIVATED POLIO VACCINE (IPV), or the QDM data element, STREPTOMYCIN, or the QDM data element, POLYMYXIN, or the QDM data element, NEOMYCIN, less than or equal to 730 days starts after start of the QDM element, BIRTHDATE equals Yes, proceed to check line 28 Medication Administered – Measles, Mumps and Rubella (MMR) Vaccine.

14. Check Medication Administered: Measles, Mumps and Rubella (MMR) Vaccine:

- a. If the Medication Administered QDM data element, MEASLES, MUMPS, AND RUBELLA (MMR) VACCINE, less than or equal to 730 days ends after start of the QDM data element, BIRTHDATE equals No, proceed to check line Procedure Performed: Measles, Mumps and Rubella (MMR) Vaccine.
- b. If the Medication Administered QDM data element, MEASLES, MUMPS, AND RUBELLA (MMR) VACCINE, less than or equal to 730 days ends after start of the

QDM data element, BIRTHDATE equals Yes, proceed to check Diagnosis Active: Anaphylactic Reaction to Hemophilus Influenze B (HiB) Vaccine.

15. Check Procedure Performed: – Measles, Mumps, and Rubella (MMR) Vaccine:

- a. If the Procedure Performed QDM data element, MEASLES, MUMPS, AND RUBELLA (MMR) VACCINE ADMINISTERED, less than or equal to 730 days ends after start of the QDM data element, BIRTHDATE equals No, proceed to check line Diagnosis Active: Disorders of the Immune System.
- b. If the Procedure Performed QDM data element, MEASLES, MUMPS, AND RUBELLA (MMR) VACCINE ADMINISTERED, less than or equal to 730 days ends after start of the QDM data element, BIRTHDATE equals Yes, proceed to check Diagnosis Active: Anaphylactic Reaction to Hemophilus Influenze B (HiB) Vaccine.

16. Check Diagnosis Active: Disorders of the Immune System:

- a. If the Diagnosis Active; QDM data element, DISORDERS OF THE IMMUNE SYSTEM, less than or equal to 730 days starts after start of the QDM element, BIRTHDATE equals No, proceed to check Diagnosis Active: HIV.
- b. If the Diagnosis Active QDM data element, DISORDERS OF THE IMMUNE SYSTEM, less than or equal to 730 days starts after start of the QDM data element, BIRTHDATE equals Yes, proceed to check Diagnosis Active: Anaphylactic Reaction to Hemophilus Influenze B (HiB) Vaccine.

17. Check Diagnosis Active: HIV:

- a. If the Diagnosis Active QDM data element, HIV, less than or equal to 730 days starts after start of the QDM data element, BIRTHDATE equals No, proceed to check Diagnosis Active: Malignant Neoplasm of Lymphatic and Hematopoietic Tissue.
- b. If the Diagnosis Active QDM data element, HIV, less than or equal to 730 days starts after start of the QDM data element, BIRTHDATE equals Yes, proceed to check Diagnosis Active: Anaphylactic Reaction to Hemophilus Influenze B (HiB) Vaccine.

18. Check Diagnosis Active: Malignant Neoplasm Lymphatic and Hematopoietic Tissue:

- a. If the Diagnosis Active QDM data element, MALIGNANT NEOPLASM LYMPHATIC AND HEMATOPIETIC TISSUE, less than or equal to 730 days starts after start of the QDM data element, BIRTHDATE equals No, proceed to check Diagnosis Active: Anaphylactic Reaction to Neomycin.
- b. If the Diagnosis Active QDM data element, MALIGNANT NEOPLASM LYMPHATIC AND HEMATOPIETIC TISSUE, less than or equal to 730 days starts after start of the QDM data element, BIRTHDATE equals Yes, proceed to check line Diagnosis Active: Anaphylactic Reaction to Hemophilus Influenze B (HiB) Vaccine.

19. Check Diagnosis Active: Anaphylactic Reaction to Neomycin:

- a. If the Diagnosis Active QDM data element, ANAPHYLACTIC REACTION TO NEOMYCIN, less than or equal to 730 days starts after start of the QDM element, BIRTHDATE equals No, proceed to check Diagnosis Active, or Diagnosis Resolved, or Laboratory Test Performed: Measles.

- b. If the Diagnosis Active QDM data element, ANAPHYLACTIC REACTION TO NEOMYCIN, less than or equal to 730 days starts after start of the QDM data element, BIRTHDATE equals Yes, proceed to check Diagnosis Active: Anaphylactic Reaction to Hemophilus Influenza B (HiB) Vaccine
- 20. Check Diagnosis Active, or Diagnosis Resolved, or Laboratory Test Performed: Measles:
 - a. If the Diagnosis Active, or Diagnosis Resolved, or Laboratory Test Performed QDM data element, Diagnosis Active or Resolved MEASLES, the QDM data element, MEASLES ANTIGEN TEST (IgG Antibody Titer) (Result: greater than or equal to 1.10), or the QDM data element MEASLES ANTIGEN TEST (IgG Antibody Presence) (Result: Positive Finding) less than or equal to 730 days starts after start of the QDM data element, BIRTHDATE equals No, include in the No/Missing Data Submitted count. Stop Processing.
 - b. If the Diagnosis Active, or Diagnosis Resolved, or Laboratory Test Performed QDM data element, MEASLES, or Laboratory Test Performed, the QDM data element, MEASLES ANTIGEN TEST (IgG Antibody Titer) (Result: greater than or equal to 1.10), or the QDM data element MEASLES ANTIGEN TEST (IgG Antibody Presence) (Result: Positive Finding) less than or equal to 730 days starts after start of the QDM data element, BIRTHDATE equals Yes, proceed to check Diagnosis Active, or Diagnosis Resolved, or Laboratory Test Performed: Mumps.
- 21. Check Diagnosis Active, or Diagnosis Resolved, or Laboratory Test Performed: Mumps:
 - a. If the Diagnosis Active, or Diagnosis Resolved, or Laboratory Test Performed QDM data element, Diagnosis Active or Diagnosis Resolved, MUMPS, or Laboratory Test Performed, the QDM data element, MUMPS ANTIGEN TEST (IgG Antibody Titer) (Result: greater than or equal to 1.10), or the QDM data element MUMPS ANTIGEN TEST (IgG Antibody Presence) (Result: Positive Finding) less than or equal to 730 days starts after start of the QDM data element, BIRTHDATE equals No, include in the No/Missing Data Submitted count. Stop Processing.
 - b. If the Diagnosis Active, or Diagnosis Resolved, or Laboratory Test Performed QDM data element, Diagnosis Active or Diagnosis Resolved, MUMPS, or Laboratory Test Performed, the QDM data element, MUMPS ANTIGEN TEST (IgG Antibody Titer) (Result: greater than or equal to 1.10), or the QDM data element MUMPS ANTIGEN TEST (IgG Antibody Presence) (Result: Positive Finding) less than or equal to 730 days starts after start of the QDM data element, BIRTHDATE equals Yes, proceed to check Diagnosis Active, or Diagnosis Resolved, or Laboratory Test Performed: Rubella.
- 22. Check Diagnosis Active, or Diagnosis Resolved, or Laboratory Test Performed: Rubella:
 - a. If the Diagnosis Active, or Diagnosis Resolved, or Laboratory Test Performed QDM data element, Diagnosis Active or Diagnosis Resolved, RUBELLA, or Laboratory Test Performed, the QDM data element, RUBELLA ANTIGEN TEST (IgG Antibody Titer) (Result: greater than or equal to 1.10), or the QDM data element RUBELLA ANTIGEN TEST (IgG Antibody Presence) (Result: Positive Finding) less than or

- equal to 730 days starts after start of the QDM data element, BIRTHDATE equals No, include in the No/Missing Data Submitted count. Stop Processing.
- b. If the Diagnosis Active, or Diagnosis Resolved, or Laboratory Test Performed QDM data element, Diagnosis Active or Diagnosis Resolved, RUBELLA, or Laboratory Test Performed, the QDM data element, RUBELLA ANTIGEN TEST (IgG Antibody Titer) (Result: greater than or equal to 1.10), or the QDM data element RUBELLA ANTIGEN TEST (IgG Antibody Presence) (Result: Positive Finding) less than or equal to 730 days starts after start of the QDM data element, BIRTHDATE equals Yes, proceed to check Diagnosis Active: Anaphylactic Reaction to Hemophilus Influenze B (HiB) Vaccine.
23. Check Diagnosis Active: Anaphylactic Reaction Hemophilus Influenze B (HiB) Vaccine:
- a. If the Diagnosis Active QDM data element, ANAPHYLACTIC REACTION TO HEMOPHILUS INFLUENZE B (HiB) VACCINE, less than or equal to 730 days starts after start of the QDM element, BIRTHDATE equals No, proceed to check Medication Administered: Hemophilus Influenze B (HiB) Vaccine.
 - b. If the Diagnosis Active QDM data element, ANAPHYLACTIC REACTION TO HEMOPHILUS INFLUENZE B (HiB) VACCINE, less than or equal to 730 days starts after start of the QDM element, BIRTHDATE equals Yes, proceed to check Medication Administered: Hepatitis B Vaccine.
24. Check Medication Administered: Hemophilus Influenze B (HiB) Vaccine:
- a. If the Medication Administered QDM data element, HEMOPHILUS INFLUENZE B (HiB) VACCINE, greater than or equal to 1 day starts after end of Medication Administered QDM data element, HEMOPHILUS INFLUENZE B (HiB) VACCINE, greater than or equal to 1 day starts after end of Medication Administered QDM data element, HEMOPHILUS INFLUENZE B (HiB) VACCINE, greater than or equal 42 days ends after start of birthdate and less than or equal to 730 days ends after start of the QDM data element, BIRTHDATE equals No, Procedure Performed: Hemophilus Influenze B (HiB) Vaccine.
 - b. If the Medication Administered QDM data element, HEMOPHILUS INFLUENZE B (HiB) VACCINE, greater than or equal to 1 day starts after end of Medication Administered QDM data element, HEMOPHILUS INFLUENZE B (HiB) VACCINE, greater than or equal to 1 day starts after end of Medication Administered QDM data element, HEMOPHILUS INFLUENZE B (HiB) VACCINE, greater than or equal 42 days ends after start of birthdate and less than or equal to 730 days ends after start of the QDM data element, BIRTHDATE equals Yes, proceed to check Medication Administered: Hepatitis B Vaccine.
25. Check Procedure Performed: Hemophilus Influenze B (HiB) Vaccine:
- a. If the Procedure Performed QDM data element, HEMOPHILUS INFLUENZE B (HiB) VACCINE ADMINISTERED, greater than or equal to 1 day starts after end of Procedure Performed QDM data element, HEMOPHILUS INFLUENZE B (HiB) VACCINE ADMINISTERED, greater than or equal to 1 day starts after end of the

Procedure Performed QDM data element, HEMOPHILUS INFLUENZE B (HiB) VACCINE ADMINISTERED, greater than or equal 42 days ends after start of birthdate AND less than or equal to 730 days ends after start of the QDM data element, BIRTHDATE equals No, include in the No/Missing Data Submitted count. Stop Processing.

- b. If the Procedure Performed QDM data element, HEMOPHILUS INFLUENZE B (HiB) VACCINE ADMINISTERED, greater than or equal to 1 day starts after end of Procedure Performed QDM data element, HEMOPHILUS INFLUENZE B (HiB) VACCINE ADMINISTERED, greater than or equal to 1 day starts after end of the Procedure Performed QDM data element, HEMOPHILUS INFLUENZE B (HiB) VACCINE ADMINISTERED, greater than or equal 42 days ends after start of birthdate AND less than or equal to 730 days ends after start of the QDM data element, BIRTHDATE equals Yes, proceed to check Medication Administered: Hepatitis B Vaccine.

26. Check Medication Administered: Hepatitis B Vaccine:

- a. If the Medication Administered QDM data element, HEPATITIS B VACCINE, less than or equal to 1 day starts after end of the Medication Administered QDM data element, HEPATITIS B VACCINE, less than or equal to 1 day starts after end of Medication Administered QDM data element, HEPATITIS B VACCINE, AND less than or equal to 730 days ends after start of the QDM data element, BIRTHDATE equals No, proceed to Procedure Performed: Hepatitis B Vaccine.
- b. If the Medication Administered QDM data element, HEPATITIS B VACCINE, less than or equal to 1 day starts after end of the Medication Administered QDM data element, HEPATITIS B VACCINE, less than or equal to 1 day starts after end of Medication Administered QDM data element, HEPATITIS B VACCINE, AND less than or equal to 730 days ends after start of the QDM data element, BIRTHDATE equals Yes, proceed to check Medication Administered: Varicella Zoster Vaccine.

27. Check Procedure Performed: Hepatitis B Vaccine:

- a. If the Procedure Performed QDM data element, HEPATITIS B VACCINE ADMINISTERED, less than or equal to 1 day starts after end of Procedure Performed QDM data element, HEPATITIS B VACCINE ADMINISTERED, less than or equal to 1 day starts after end of Procedure Performed QDM data element, HEPATITIS B VACCINE ADMINISTERED, AND less than or equal to 730 days ends after start of QDM data element, BIRTHDATE equals No, proceed to check Diagnosis Active: Anaphylactic Reaction to Hepatitis B Vaccine, or Anaphylactic Reaction to Common Baker's Yeast, or Hepatitis B.
- b. If the Procedure Performed QDM data element, HEPATITIS B VACCINE ADMINISTERED, less than or equal to 1 day starts after end of Procedure Performed QDM data element, HEPATITIS B VACCINE ADMINISTERED, less than or equal to 1 day starts after end of Procedure Performed QDM data element, HEPATITIS B VACCINE ADMINISTERED, AND less than or equal to 730 days ends

after start of QDM data element, BIRTHDATE equals Yes, proceed to check Medication Administered: Varicella Zoster Vaccine (VZV).

28. Check Diagnosis Active: Anaphylactic Reaction to Hepatitis B Vaccine, or Anaphylactic Reaction to Common Baker's Yeast, or Hepatitis B:

- a. If the Diagnosis Active QDM data element, ANAPHYLACTIC REACTION TO HEPATITIS B VACCINE, or QDM data element, ANAPHYLACTIC REACTION TO COMMON BAKER'S YEAST, or QDM data element, HEPATITIS B, less than or equal to 730 days starts after start of the QDM element, BIRTHDATE equals No, proceed to check Diagnosis Inactive: HEPATITIS B.
- b. If the Diagnosis Active QDM data element, ANAPHYLACTIC REACTION TO HEPATITIS B VACCINE, or QDM data element, ANAPHYLACTIC REACTION TO COMMON BAKER'S YEAST, or QDM data element, HEPATITIS B, less than or equal to 730 days starts after start of the QDM element, BIRTHDATE equals Yes, proceed to check Medication Administered: Varicella Zoster Vaccine (VZV).

29. Check Diagnosis Inactive: Hepatitis B Vaccine:

- a. If the Diagnosis Active QDM data element, HEPATITIS B, less than or equal to 730 days starts after start of QDM data element, BIRTHDATE equals No, proceed to check Laboratory Test Performed: Hepatitis B Antigen Test.
- b. If the Diagnosis Active QDM data element, HEPATITIS B, less than or equal to 730 days starts after start of QDM data element, BIRTHDATE equals Yes, proceed Medication Administered: Varicella Zoster Vaccine (VZV).

30. Check Laboratory Test Performed: Hepatitis B Antigen Test:

- a. If the Laboratory Test Performed QDM data element, HEPATITIS B ANTIGEN TEST (result: Seropositive), less than or equal to 730 days starts after start of the QDM data element, BIRTHDATE equals No, include in the No/Missing Data Submitted count. Stop Processing.
- b. If the Laboratory Test Performed QDM data element, HEPATITIS B ANTIGEN TEST (result: Seropositive), less than or equal to 730 days starts after start of the QDM data element, BIRTHDATE equals Yes, proceed to check Medication Administered: Varicella Zoster Vaccine (VZV).

31. Check Medication Administered: Varicella Zoster Vaccine (VZV):

- a. If the Medication Administered QDM data element, VARICELLA ZOSTER VACCINE (VZV), less than or equal to 730 days ends after start of the QDM data element, BIRTHDATE equals No, proceed to check Procedure Performed: Varicella Zoster Vaccine (VZV).
- b. If the Medication Administered QDM data element, VARICELLA ZOSTER VACCINE (VZV), less than or equal to 730 days ends after start of the QDM data element, BIRTHDATE equals Yes, proceed to check Diagnosis Active: Anaphylactic Reaction to Pneumococcal Conjugate Vaccine.

32. Check Procedure Performed: Varicella Zoster Vaccine (VZV):
- a. If the Procedure Performed QDM data element, VARICELLA ZOSTER VACCINE (VZV) ADMINISTERED, less than or equal to 730 days ends after start of the QDM data element, BIRTHDATE equals No, proceed to check Diagnosis Active: Disorders of the Immune System, or HIV, or Malignant Neoplasm of Lymphatic and Hematopoietic Tissue, or Anaphylactic Reaction to Neomycin.
 - b. If the Procedure Performed QDM data element, VARICELLA ZOSTER VACCINE (VZV) ADMINISTERED, less than or equal to 730 days ends after start of the QDM data element, BIRTHDATE equals Yes, proceed to check Diagnosis Active: Anaphylactic Reaction to Pneumococcal Conjugate Vaccine.
33. Check Diagnosis Active: Disorders of the Immune System, or HIV, or Malignant Neoplasm of Lymphatic and Hematopoietic Tissue, or Anaphylactic Reaction to Neomycin:
- a. If the Diagnosis Active QDM data element, DISORDERS OF THE IMMUNE SYSTEM, or QDM data element, HIV, or QDM data element, MALIGNANT NEOPLASM OF LYMPHATIC AND HEMATOPEITIC TISSUE, or QDM data element, ANAPHYLACTIC REACTION TO NEOMYCIN, less than or equal to 730 days starts after start of the QDM element, BIRTHDATE equals No, proceed to check Diagnosis Active, or Inactive, or Resolved: Varicella Zoster.
 - b. If the Diagnosis Active QDM data element, DISORDERS OF THE IMMUNE SYSTEM, or QDM data element, HIV, or QDM data element, MALIGNANT NEOPLASM OF LYMPHATIC AND HEMATOPEITIC TISSUE, or QDM data element, ANAPHYLACTIC REACTION TO NEOMYCIN, less than or equal to 730 days starts after start of the QDM element, BIRTHDATE equals Yes, proceed to check Diagnosis Active: Anaphylactic Reaction to Pneumococcal Conjugate Vaccine.
34. Check Diagnosis Active, or Inactive, or Resolved: Varicella Zoster:
- a. If the Diagnosis Active QDM data element, VARICELLA ZOSTER, less than or equal to 730 days starts after start of the QDM data element, BIRTHDATE equals No, proceed to check Laboratory Test Performed: Varicella Zoster Antibody Test.
 - b. If the Diagnosis Active QDM data element, VARICELLA ZOSTER, less than or equal to 730 days starts after start of the QDM data element, BIRTHDATE equals Yes, Diagnosis Active: Anaphylactic Reaction to Pneumococcal Conjugate Vaccine.
35. Check Laboratory Test Performed: Varicella Zoster Vaccine (VZV):
- a. If the Laboratory Test Performed QDM data element, VARICELLA ZOSTER ANTIGEN TEST (IgG Antibody Titer) (Result: greater than or equal to 1.10) or (IgG Antibody Presence) (Result: Positive Finding), less than or equal to 730 days starts after start of the QDM data element, BIRTHDATE equals No, include in the No/Missing Data Submitted count. Stop Processing.
 - b. If the Laboratory Test Performed QDM data element, VARICELLA ZOSTER ANTIGEN TEST (IgG Antibody Titer) (Result: greater than or equal to 1.10) or (IgG Antibody Presence) (Result: Positive Finding), less than or equal to 730 days starts

after start of the QDM data element, BIRTHDATE equals Yes, proceed to check
Diagnosis Active: Anaphylactic Reaction to Pneumococcal Conjugate Vaccine.

36. Check Diagnosis Active: Anaphylactic Reaction to Pneumococcal Conjugate Vaccine:

- a. If the Diagnosis Active QDM data element, ANAPHYLACTIC REACTION TO PNEUMOCOCCAL CONJUGATE VACCINE, less than or equal to 730 days starts after start of QDM data element, BIRTHDATE equals No, proceed to check Medication Administered: Pneumococcal Conjugate Vaccine.
- b. If the Diagnosis Active QDM data element, ANAPHYLACTIC REACTION TO PNEUMOCOCCAL CONJUGATE VACCINE, less than or equal to 730 days starts after start of QDM data element, BIRTHDATE equals Yes, proceed to check Medication Administered: Hepatitis A Vaccine.

37. Check Medication Administered: Pneumococcal Conjugate Vaccine:

- a. If the Medication Administered QDM data element, PNEUMOCOCCAL CONJUGATE VACCINE, greater than or equal to 1 day starts after end of the Medication Administered QDM data element, PNEUMOCOCCAL CONJUGATE VACCINE, greater than or equal to 1 day starts after end of Medication Administered QDM data element, PNEUMOCOCCAL CONJUGATE VACCINE, greater than or equal to 1 day starts after end of Medication Administered QDM data element, PNEUMOCOCCAL CONJUGATE VACCINE, greater than or equal 42 days and less than or equal to 730 days ends after start of QDM data element, BIRTHDATE equals No, proceed to Procedure Performed: Pneumococcal Conjugate Vaccine.
- b. If the Medication Administered QDM data element, PNEUMOCOCCAL CONJUGATE VACCINE, greater than or equal to 1 day starts after end of the Medication Administered QDM data element, PNEUMOCOCCAL CONJUGATE VACCINE, greater than or equal to 1 day starts after end of Medication Administered QDM data element, PNEUMOCOCCAL CONJUGATE VACCINE, greater than or equal to 1 day starts after end of Medication Administered QDM data element, PNEUMOCOCCAL CONJUGATE VACCINE, greater than or equal 42 days and less than or equal to 730 days ends after start of QDM data element, BIRTHDATE equals Yes, proceed to check Medication Administered: Hepatitis A Vaccine.

38. Check Procedure Performed: Pneumococcal Conjugate Vaccine:

- a. If the Procedure Performed QDM data element, PNEUMOCOCCAL CONJUGATE VACCINE ADMINISTERED, greater than or equal to 1 day starts after end of QDM data element, PNEUMOCOCCAL CONJUGATE VACCINE ADMINISTERED, greater than or equal to 1 day starts after end of Procedure Performed QDM data element, PNEUMOCOCCAL CONJUGATE VACCINE ADMINISTERED, greater than or equal to 1 day starts after end of the QDM data element, PNEUMOCOCCAL CONJUGATE VACCINE ADMINISTERED, greater than or equal 42 days AND less than or equal to 730 days ends after start of QDM data element, BIRTHDATE equals No, include in the No/Missing Data Submitted count. Stop Processing.

- b. If the Procedure Performed QDM data element, PNEUMOCOCCAL CONJUGATE VACCINE ADMINISTERED, greater than or equal to 1 day starts after end of QDM data element, PNEUMOCOCCAL CONJUGATE VACCINE ADMINISTERED, greater than or equal to 1 day starts after end of Procedure Performed QDM data element, PNEUMOCOCCAL CONJUGATE VACCINE ADMINISTERED, greater than or equal to 1 day starts after end of the QDM data element, PNEUMOCOCCAL CONJUGATE VACCINE ADMINISTERED, greater than or equal 42 days AND less than or equal to 730 days ends after start of QDM data element, BIRTHDATE equals Yes, proceed to check Medication Administered: Hepatitis A Vaccine.

39. Check Medication Administered: Hepatitis A Vaccine:

- a. If the Medication Administered QDM data element, HEPATITIS A VACCINE, less than or equal to 730 days ends after start of QDM data element, BIRTHDATE equals No, proceed to check Procedure Performed: Hepatitis A Vaccine.
- b. If the Medication Administered QDM data element, HEPATITIS A VACCINE, less than or equal to 730 days ends after start of QDM data element, BIRTHDATE equals Yes, proceed to Diagnosis Active: Anaphylactic Reaction to Rotavirus Vaccine.

40. Check Procedure Performed: Hepatitis A Vaccine:

- a. If the Procedure Performed QDM data element, HEPATITIS A VACCINE ADMINISTERED, less than or equal to 730 days ends after start of QDM data element, BIRTHDATE equals No, proceed to check Diagnosis Active: Anaphylactic Reaction to Hepatitis A Vaccine.
- b. If the Procedure Performed QDM data element, HEPATITIS A VACCINE ADMINISTERED, less than or equal to 730 days ends after start of QDM data element, BIRTHDATE equals Yes, proceed to check Diagnosis Active: Anaphylactic Reaction to Rotavirus Vaccine.

41. Check Diagnosis Active: Anaphylactic Reaction to Hepatitis A Vaccine:

- a. If the Diagnosis Active QDM data element, ANAPHYLACTIC REACTION TO HEPATITIS A VACCINE, less than or equal to 730 days starts after start of QDM data element, BIRTHDATE equals No, proceed to check Diagnosis Active: Hepatitis A.
- b. If the Diagnosis Active QDM data element, ANAPHYLACTIC REACTION TO HEPATITIS A VACCINE, less than or equal to 730 days starts after start of QDM data element, BIRTHDATE equals Yes, proceed to check Diagnosis Active: Anaphylactic Reaction to Rotavirus Vaccine.

42. Check Diagnosis Active: Hepatitis A:

- a. If the Diagnosis Active QDM data element, HEPATITIS A, less than or equal to 730 days starts after start of QDM data element, BIRTHDATE equals No, proceed to check Diagnosis Resolved: Hepatitis A.
- b. If the Diagnosis Active QDM data element, HEPATITIS A, less than or equal to 730 days starts after start of QDM data element, BIRTHDATE equals Yes, proceed to check Diagnosis Active: Anaphylactic Reaction to Rotavirus Vaccine.

43. Check Diagnosis Resolved: Hepatitis A:

- a. If the Diagnosis Resolved QDM data element, HEPATITIS A, less than or equal to 730 days starts after start of QDM data element, BIRTHDATE equals No, proceed to check Laboratory Test Performed: Hepatitis A Antigen Test.
- b. If the Diagnosis Resolved QDM data element, HEPATITIS A, less than or equal to 730 days starts after start of QDM data element, BIRTHDATE equals Yes, proceed to check Diagnosis Active: Anaphylactic Reaction to Rotavirus Vaccine.

44. Check Laboratory Test Performed: Hepatitis A Antigen Test:

- a. If the Laboratory Test Performed QDM data element, HEPATITIS A ANTIGEN TEST (result: Seropositive), less than or equal to 730 days starts after start of QDM data element, BIRTHDATE equals No, include in the No/Missing Data Submitted count. Stop Processing.
- b. If the Laboratory Test Performed QDM data element, HEPATITIS A ANTIGEN TEST (result: Seropositive), less than or equal to 730 days starts after start of QDM data element, BIRTHDATE equals Yes, proceed to check Diagnosis Active: Anaphylactic Reaction to Rotavirus Vaccine

45. Check Diagnosis Active: Anaphylactic Reaction to Rotavirus Vaccine:

- a. If the Diagnosis Active QDM data element, ANAPHYLACTIC REACTION TO ROTAVIRUS VACCINE, less than or equal to 730 days starts after start of QDM data element, BIRTHDATE equals No, proceed to check Medication Administration: Rotavirus Vaccine.
- b. If the Diagnosis Active QDM data element, ANAPHYLACTIC REACTION TO ROTAVIRUS VACCINE, less than or equal to 730 days starts after start of QDM data element, BIRTHDATE equals Yes, proceed to \$RotavirusVaccineDose2Schedule.

46. Check Medication Administered: Rotavirus Vaccine:

- a. If the Medication Administered QDM data element, ROTAVIRUS VACCINE (2 dose schedule), greater than or equal 42 days and less than or equal to 730 days ends after start of QDM data element, BIRTHDATE equals No, proceed to check Procedure Performed: Rotavirus.
- b. If the Medication Administered QDM data element, ROTAVIRUS VACCINE (2 dose schedule), greater than or equal 42 days and less than or equal to 730 days ends after start of QDM data element, BIRTHDATE equals Yes, proceed to check Medication Administered.

47. Check Medication Administered: Rotavirus Vaccine:

- a. If the Medication Administered QDM data element, ROTAVIRUS VACCINE (2 dose schedule), less than or equal to 730 days ends after start of QDM data element, BIRTHDATE equals No, proceed to check Procedure Performed: Rotavirus Vaccine.
- b. If the Medication Administered QDM data element, ROTAVIRUS VACCINE (2 dose schedule), less than or equal to 730 days ends after start of QDM data element, BIRTHDATE equals Yes, proceed to check RotavirusVaccineDose2Schedule.

48. Check Procedure Performed: Rotavirus Vaccine:

- a. If the Procedure Performed QDM data element, ROTAVIRUS VACCINE ADMINISTERED (2 dose schedule), greater than or equal 42 days and less than or equal to 730 days ends after start of QDM data element, BIRTHDATE equals No, proceed to check \$RotavirusVaccineDose2Schedule.
- b. If the Procedure Performed QDM data element, ROTAVIRUS VACCINE ADMINISTERED (2 dose schedule), greater than or equal 42 days and less than or equal to 730 days ends after start of QDM data element, BIRTHDATE equals Yes, proceed to check Procedure Performed: Rotavirus Vaccine.

49. Check Procedure Performed: – Rotavirus Vaccine:

- a. If the Procedure Performed QDM data element, ROTAVIRUS VACCINE ADMINISTERED (2 dose schedule), less than or equal to 730 days ends after start of QDM data element, BIRTHDATE equals No, proceed to check \$RotavirusVaccineDose2Schedule.
- b. If the Procedure Performed QDM data element, ROTAVIRUS VACCINE ADMINISTERED (2 dose schedule), less than or equal to 730 days ends after start of QDM data element, BIRTHDATE equals Yes, proceed to check Medication Administered: Influenza Vaccine.

50. Check \$RotavirusVaccineDose2Schedule:

- a. If \$RotavirusVaccineDose2Schedule (Medication Administered, QDM data element, ROTAVIRUS VACCINE [2 dose schedule], greater than or equal to 42 days AND less than or equal to 730 days ends after start of QDM data element, BIRTHDATE greater than or equal to 1 day starts after end of \$RotavirusVaccineDose3Schedule (Medication Administered, QDM data element, ROTAVIRUS VACCINE [3 dose schedule], greater than or equal to 42 days and less than or equal to 730 days ends after start of the QDM data element, BIRTHDATE) greater than or equal to 1 day starts after end of \$RotavirusVaccineDose3Schedule (Medication Administered, QDM data element, ROTAVIRUS VACCINE [3 dose schedule], greater than or equal to 42 days and less than or equal to 730 days ends after start of QDM data element, BIRTHDATE equals No, proceed to check \$RotavirusVaccineDose3Schedule.
- b. If \$RotavirusVaccineDose2Schedule (Medication Administered, QDM data element, ROTAVIRUS VACCINE [2 dose schedule], greater than or equal to 42 days AND less than or equal to 730 days ends after start of QDM data element, BIRTHDATE greater than or equal to 1 day starts after end of \$RotavirusVaccineDose3Schedule (Medication Administered, QDM data element, ROTAVIRUS VACCINE [3 dose schedule], greater than or equal to 42 days and less than or equal to 730 days ends after start of the QDM data element, BIRTHDATE) greater than or equal to 1 day starts after end of \$RotavirusVaccineDose3Schedule (Medication Administered, QDM data element, ROTAVIRUS VACCINE [3 dose schedule], greater than or equal to 42 days and less than or equal to 730 days ends after start of QDM data element, BIRTHDATE equals Yes, proceed to check \$RotavirusVaccineAdminDose.

51. Check \$RotavirusVaccineDose3Schedule:

- a. If \$RotavirusVaccineDose3Schedule (Medication Administered, QDM data element, ROTAVIRUS VACCINE [3 dose schedule], greater than or equal to 42 days and less than or equal to 730 days ends after start of the QDM data element, BIRTHDATE) greater than or equal to 1 day starts after end of \$RotavirusVaccineDose2Schedule (Medication Administered, QDM data element, ROTAVIRUS VACCINE [2 dose schedule], greater than or equal to 42 days and less than or equal to 730 days ends after start of the QDM data element, BIRTHDATE) greater than or equal to 1 day starts after end of \$RotavirusVaccineDose3Schedule (Medication Administered, QDM data element, ROTAVIRUS VACCINE [3 dose schedule], greater than or equal to 42 days and less than or equal to 730 days ends after start of the QDM data element, BIRTHDATE) equals No, proceed to check \$RotavirusVaccineDose3Schedule.
- b. If \$RotavirusVaccineDose3Schedule (Medication Administered, QDM data element, ROTAVIRUS VACCINE [3 dose schedule], greater than or equal to 42 days and less than or equal to 730 days ends after start of the QDM data element, BIRTHDATE) greater than or equal to 1 day starts after end of \$RotavirusVaccineDose2Schedule (Medication Administered, QDM data element, ROTAVIRUS VACCINE [2 dose schedule], greater than or equal to 42 days and less than or equal to 730 days ends after start of the QDM data element, BIRTHDATE) greater than or equal to 1 day starts after end of \$RotavirusVaccineDose3Schedule (Medication Administered, QDM data element, ROTAVIRUS VACCINE [3 dose schedule], greater than or equal to 42 days and less than or equal to 730 days ends after start of the QDM data element, BIRTHDATE) equals Yes, proceed to check Medication Administered: Influenza Vaccine.

52. Check \$RotavirusVaccineDose3Schedule:

- a. If \$RotavirusVaccineDose3Schedule (Medication Administered, QDM data element, ROTAVIRUS VACCINE [3 dose schedule], greater than or equal to 42 days and less than or equal to 730 days ends after start of the QDM data element, BIRTHDATE) greater than or equal to 1 day starts after end of \$RotavirusVaccineDose3Schedule (Medication Administered, QDM data element, ROTAVIRUS VACCINE [3 dose schedule], greater than or equal to 42 days and less than or equal to 730 days ends after start of the QDM data element, BIRTHDATE) greater than or equal to 1 day starts after end of \$RotavirusVaccineDose2Schedule (Medication Administered, QDM data element, ROTAVIRUS VACCINE [2 dose schedule], greater than or equal to 42 days and less than or equal to 730 days ends after start of the QDM data element, BIRTHDATE) equals No, proceed to check \$RotavirusVaccineAdminDose2Schedule Procedure Performed.
- b. If \$RotavirusVaccineDose3Schedule (Medication Administered, QDM data element, ROTAVIRUS VACCINE [3 dose schedule], greater than or equal to 42 days and less than or equal to 730 days ends after start of the QDM data element, BIRTHDATE) greater than or equal to 1 day starts after end of \$RotavirusVaccineDose3Schedule (Medication Administered, QDM data element, ROTAVIRUS VACCINE [3 dose

schedule], greater than or equal to 42 days and less than or equal to 730 days ends after start of the QDM data element, BIRTHDATE) greater than or equal to 1 day starts after end of \$RotavirusVaccineDose2Schedule (Medication Administered, QDM data element, ROTAVIRUS VACCINE [2 dose schedule], greater than or equal to 42 days and less than or equal to 730 days ends after start of the QDM data element, BIRTHDATE) equals Yes, proceed to check Medication Administered: Influenza Virus.

53. Check \$RotavirusVaccineAdminDose2Schedule Procedure Performed:

- a. If \$RotavirusVaccineAdminDose2Schedule (Procedure Performed, QDM data element, ROTAVIRUS VACCINE [2 dose schedule] ADMINISTERED, greater than or equal to 42 days and less than or equal to 730 days ends after start of the QDM data element, BIRTHDATE) greater than or equal to 1 day starts after end of \$RotavirusVaccineAdminDose3Schedule (Procedure Performed, QDM data element, ROTAVIRUS VACCINE [3 dose schedule] ADMINISTERED, greater than or equal to 42 days and less than or equal to 730 days ends after start of the QDM data element, BIRTHDATE) greater than or equal to 1 day starts after end of \$RotavirusVaccineAdminDose3Schedule (Procedure Performed, QDM data element, ROTAVIRUS VACCINE [3 dose schedule] ADMINISTERED, greater than or equal to 42 days and less than or equal to 730 days ends after start of the QDM data element, BIRTHDATE) equals No, proceed to check \$RotavirusVaccineAdminDose3Schedule.
- b. If \$RotavirusVaccineAdminDose2Schedule (Procedure Performed, QDM data element, ROTAVIRUS VACCINE [2 dose schedule] ADMINISTERED, greater than or equal to 42 days and less than or equal to 730 days ends after start of the QDM data element, BIRTHDATE) greater than or equal to 1 day starts after end of \$RotavirusVaccineAdminDose3Schedule (Procedure Performed, QDM data element, ROTAVIRUS VACCINE [3 dose schedule] ADMINISTERED, greater than or equal to 42 days and less than or equal to 730 days ends after start of the QDM data element, BIRTHDATE) greater than or equal to 1 day starts after end of \$RotavirusVaccineAdminDose3Schedule (Procedure Performed, QDM data element, ROTAVIRUS VACCINE [3 dose schedule] ADMINISTERED, greater than or equal to 42 days and less than or equal to 730 days ends after start of the QDM data element, BIRTHDATE) equals Yes, proceed to check Medication Administered: Influenza Vaccine.

54. Check \$RotavirusVaccineAdminDose3Schedule:

- a. If \$RotavirusVaccineAdminDose3Schedule (Procedure Performed, QDM data element, ROTAVIRUS VACCINE [3 dose schedule] ADMINISTERED, greater than or equal to 42 days and less than or equal to 730 days ends after start of the QDM data element, BIRTHDATE) greater than or equal to 1 day starts after end of \$RotavirusVaccineAdminDose2Schedule (Procedure Performed, QDM data element, ROTAVIRUS VACCINE [2 dose schedule] ADMINISTERED, greater than or equal to 42 days and less than or equal to 730 days ends after start of the QDM data

- element, BIRTHDATE) greater than or equal to 1 day starts after end of \$RotavirusVaccineAdminDose3Schedule (Procedure Performed, QDM data element, ROTAVIRUS VACCINE [3 dose schedule] ADMINISTERED, greater than or equal to 42 days and less than or equal to 730 days ends after start of the QDM data element, BIRTHDATE) equals No, proceed to check \$RotavirusVaccineAdminDose3Schedule.
- b. If \$RotavirusVaccineAdminDose3Schedule (Procedure Performed, QDM data element, ROTAVIRUS VACCINE [3 dose schedule] ADMINISTERED, greater than or equal to 42 days and less than or equal to 730 days ends after start of the QDM data element, BIRTHDATE) greater than or equal to 1 day starts after end of \$RotavirusVaccineAdminDose2Schedule (Procedure Performed, QDM data element, ROTAVIRUS VACCINE [2 dose schedule] ADMINISTERED, greater than or equal to 42 days and less than or equal to 730 days ends after start of the QDM data element, BIRTHDATE) greater than or equal to 1 day starts after end of \$RotavirusVaccineAdminDose3Schedule (Procedure Performed, QDM data element, ROTAVIRUS VACCINE [3 dose schedule] ADMINISTERED, greater than or equal to 42 days and less than or equal to 730 days ends after start of the QDM data element, BIRTHDATE) equals Yes, proceed to check Medication Administered – Rotavirus Vaccine.
55. Check \$RotavirusVaccineAdminDose3Schedule:
- a. If \$RotavirusVaccineAdminDose3Schedule (Procedure Performed, QDM data element, ROTAVIRUS VACCINE [3 dose schedule] ADMINISTERED, greater than or equal to 42 days and less than or equal to 730 days ends after start of the QDM data element, BIRTHDATE) greater than or equal to 1 day starts after end of \$RotavirusVaccineAdminDose3Schedule (Procedure Performed, QDM data element, ROTAVIRUS VACCINE [3 dose schedule] ADMINISTERED, greater than or equal to 42 days and less than or equal to 730 days ends after start of the QDM data element, BIRTHDATE) greater than or equal to 1 day starts after end of \$RotavirusVaccineAdminDose2Schedule (Procedure Performed, QDM data element, ROTAVIRUS VACCINE [2 dose schedule] ADMINISTERED, greater than or equal to 42 days and less than or equal to 730 days ends after start of the QDM data element, BIRTHDATE) equals No, proceed to check Medication Administered: Rotavirus Vaccine (3 dose schedule).
- b. If \$RotavirusVaccineAdminDose3Schedule (Procedure Performed, QDM data element, ROTAVIRUS VACCINE [3 dose schedule] ADMINISTERED, greater than or equal to 42 days and less than or equal to 730 days ends after start of the QDM data element, BIRTHDATE) greater than or equal to 1 day starts after end of \$RotavirusVaccineAdminDose3Schedule (Procedure Performed, QDM data element, ROTAVIRUS VACCINE [3 dose schedule] ADMINISTERED, greater than or equal to 42 days and less than or equal to 730 days ends after start of the QDM data element, BIRTHDATE) greater than or equal to 1 day starts after end of \$RotavirusVaccineAdminDose2Schedule (Procedure Performed, QDM data element, ROTAVIRUS VACCINE [2 dose schedule] ADMINISTERED, greater than or equal to

42 days and less than or equal to 730 days ends after start of the QDM data element, BIRTHDATE) equals Yes, proceed to check Medication Administered: Influenza Vaccine.

56. Check Medication Administered: Rotavirus Vaccine (3 dose schedule):

- a. If the Medication Administered QDM data element, ROTAVIRUS VACCINE (3 dose schedule), greater than or equal 1 day starts after end of Medication Administered QDM data element, ROTAVIRUS VACCINE (3 dose schedule), greater than or equal 1 hour starts after end of QDM data element, ROTAVIRUS VACCINE (3 dose schedule), greater than or equal to 42 days AND less than or equal to 730 days ends after start of QDM data element, BIRTHDATE equals No, proceed to check line Procedure Performed: Rotavirus Vaccine (3 dose schedule).
- b. If the Medication Administered QDM data element, ROTAVIRUS VACCINE (3 dose schedule), greater than or equal 1 day starts after end of Medication Administered QDM data element, ROTAVIRUS VACCINE (3 dose schedule), greater than or equal 1 hour starts after end of QDM data element, ROTAVIRUS VACCINE (3 dose schedule), greater than or equal to 42 days AND less than or equal to 730 days ends after start of QDM data element, BIRTHDATE equals Yes, proceed to check Medication Administered: Influenza Virus.

57. Check Procedure Performed: Rotavirus Vaccine (3 dose schedule):

- a. If the Procedure Performed QDM data element, ROTAVIRUS VACCINE (3 dose schedule) ADMINISTERED, greater than or equal to 1 day starts after end of Procedure Performed QDM data element, ROTAVIRUS VACCINE (3 dose schedule) ADMINISTERED, greater than or equal to 1 day starts after end of the QDM data element, ROTAVIRUS VACCINE (3 dose schedule) ADMINISTERED, greater than or equal 42 days and less than or equal to 730 days ends after start of the QDM data element, BIRTHDATE equals No, include in No/Missing Numerator Data Submitted.
- b. If the Procedure Performed QDM data element, ROTAVIRUS VACCINE (3 dose schedule) ADMINISTERED, greater than or equal to 1 day starts after end of Procedure Performed QDM data element, ROTAVIRUS VACCINE (3 dose schedule) ADMINISTERED, greater than or equal to 1 day starts after end of the QDM data element, ROTAVIRUS VACCINE (3 dose schedule) ADMINISTERED, greater than or equal 42 days and less than or equal to 730 days ends after start of the QDM data element, BIRTHDATE equals Yes, proceed to check Medication Administered: Influenza Vaccine.

58. Check Medication Administered: Influenza Vaccine:

- a. If the Medication Administered QDM data element, INFLUENZA VACCINE, greater than or equal 180 days and less than or equal to 730 days ends after start of the QDM data element, BIRTHDATE equals No, proceed to check Procedure Performed: Influenza Vaccine.
- b. If the Medication Administered QDM data element, INFLUENZA VACCINE, greater than or equal 180 days and less than or equal to 730 days ends after start of the

QDM data element, BIRTHDATE equals Yes, include in Numerator Count, which is represented by the Letter a in the sample calculation listed at the end of this document. Letter a equals 12 patients in the sample calculation. Stop Processing.

59. Check Procedure Performed: Influenza Vaccine:

- a. If the Procedure Performed QDM data element, INFLUENZA VACCINE ADMINISTERED, greater than or equal 180 days and less than or equal to 730 days ends after start of QDM data element, BIRTHDATE equals No, proceed to check Diagnosis Active: Anaphylactic Reaction to Influenza Vaccine.
- b. If the Procedure Performed QDM data element, INFLUENZA VACCINE ADMINISTERED, greater than or equal 180 days and less than or equal to 730 days ends after start of QDM data element, BIRTHDATE equals Yes, include in Numerator Count, which is represented by the Letter a in the sample calculation listed at the end of this document. Letter a equals 12 patients in the sample calculation. Stop Processing.

60. Check Diagnosis Active: Anaphylactic Reaction to Influenza Vaccine:

- a. If the Diagnosis Active QDM data element, ANAPHYLACTIC REACTION TO INFLUENZA VACCINE, less than or equal to 730 days starts after start of the QDM element, BIRTHDATE equals No, proceed to check Diagnosis Active: Malignant Neoplasm of Lymphatic Hematopoietic Tissue.
- b. If the Diagnosis Active QDM data element, ANAPHYLACTIC REACTION TO INFLUENZA VACCINE, less than or equal to 730 days starts after start of the QDM element, BIRTHDATE equals Yes, include in Numerator Count, which is represented by Letter a in the sample calculation listed at the end of this document. Letter a equals 12 patients in the sample calculation. Stop Processing.

61. Check Diagnosis Active: Malignant Neoplasm of Lymphatic Hematopoietic Tissue:

- a. If the Diagnosis Active QDM data element, MALIGNANT NEOPLASM OF LYMPHATIC TISSUE, less than or equal to 730 days starts after start of the QDM data element, BIRTHDATE equals No, proceed to check Diagnosis Active: Anaphylactic Reaction to Neomycin.
- b. If the Diagnosis Active QDM data element, MALIGNANT NEOPLASM OF LYMPHATIC TISSUE, less than or equal to 730 days starts after start of the QDM data element, BIRTHDATE equals Yes, include in Numerator Count, which is represented by Letter a in the sample calculation listed at the end of this document. Letter a equals 12 patients in the sample calculation. Stop Processing.

62. Check Diagnosis Active: Anaphylactic Reaction to Neomycin:

- a. If the Diagnosis Active QDM data element, ANAPHYLACTIC REACTION TO NEOMYCIN, less than or equal to 730 days starts after start of the QDM data element, BIRTHDATE equals No, include in the No/Missing Data Submitted count. Stop Processing.
- b. If the Diagnosis Active QDM data element, ANAPHYLACTIC REACTION TO NEOMYCIN, less than or equal to 730 days starts after start of the QDM data

element, BIRTHDATE equals Yes, include in Numerator Count, which is represented by Letter a in the sample calculation listed at the end of this document. Letter a equals 12 patients in the sample calculation. Stop Processing.

SAMPLE CALCULATION:	
Performance Rate =	
$\frac{\text{Numerator (a=12 patients)}}{\text{Denominator (b=20 patients) - Denominator Exclusions (N/A) - Denominator Exceptions (N/A)}}$	= 60.00%