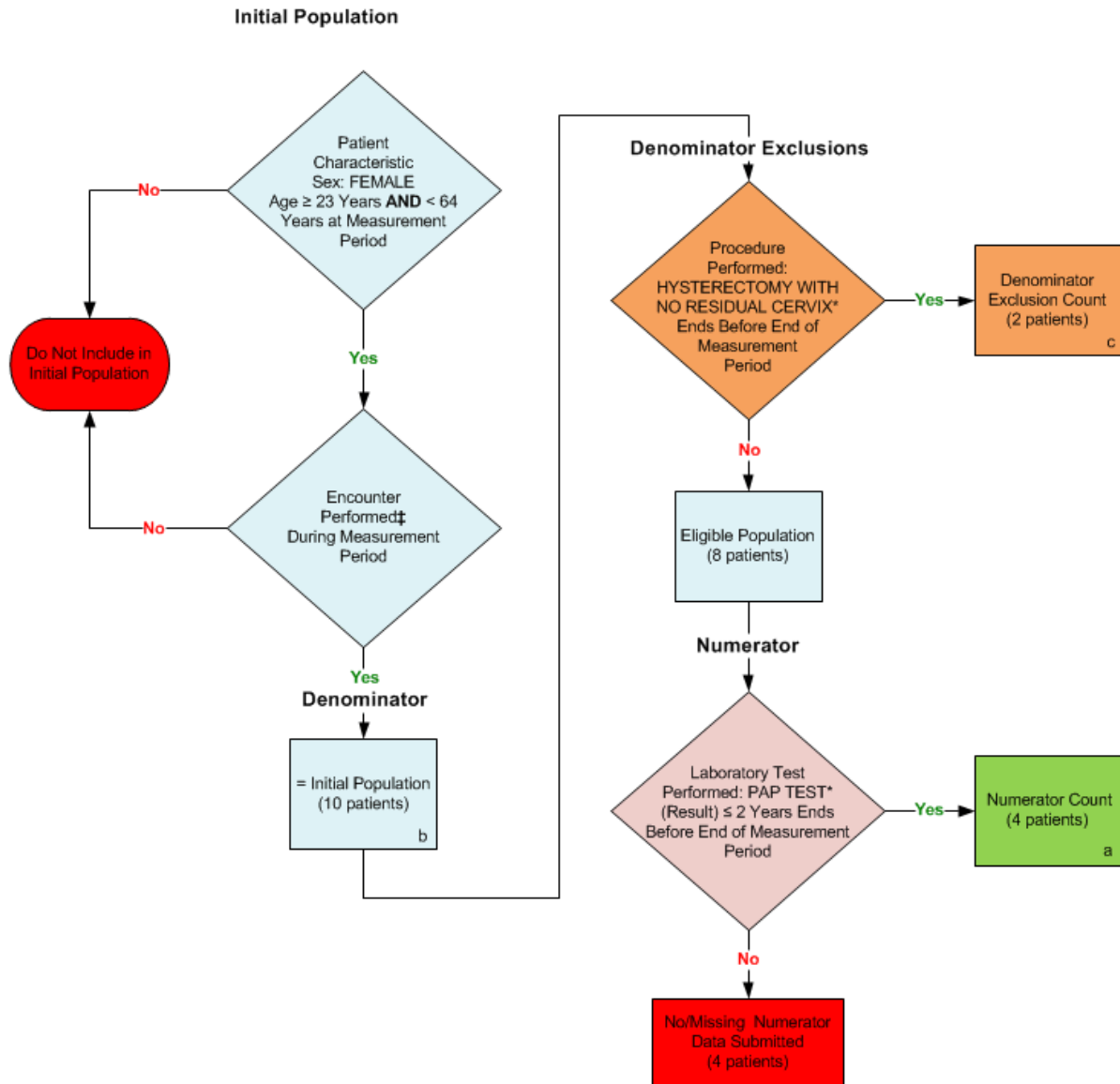


2014 eCQM Flow
Measure Identifier: CMS124v4
 NQF 0032: Cervical Cancer Screening



*Please refer to the specific section of the eCQM to identify the QDM data elements and associated value sets for use in reporting this eCQM.

† For a listing of appropriate encounters, please refer to the Population Criteria and associated value sets as specific data elements have not been listed.

SAMPLE CALCULATION:

Performance Rate =

$$\frac{\text{Numerator (a=4 patients)}}{\text{Denominator (b=10 patients) - Denominator Exclusions (c=2 patients) - Denominator Exceptions (N/A)}} = 50.00\%$$

2014 eCQM Flow
Measure Identifier: CMS124v4
NQF 0032: Cervical Cancer Screening

Please refer to the specific section of the eCQM to identify the Population Criteria and associated value sets for use in reporting this eCQM.

1. Start Initial Population
2. Check Patient Characteristic Sex and Age:
 - a. If FEMALE and AGE is greater than or equal to 23 years AND less than 64 years of age at measurement period equals No, do not include in Initial Population and stop processing.
 - b. If FEMALE and AGE is greater than or equal to 23 years of age AND less than 64 years of age at measurement period equals Yes, continue processing and proceed to check Encounter Performed.
3. Check Encounter Performed:
 - a. If the Encounter Performed QDM data element, OFFICE VISIT during measurement period equals Yes, include in the Initial Population and proceed to Denominator.
 - b. If the Encounter Performed QDM data element, OFFICE VISIT during measurement period equals No, proceed to check next Encounter Performed.
 - c. If the Encounter Performed QDM data element, FACE-TO-FACE INTERACTION during measurement period equals Yes, include in the Initial Population and proceed to Denominator.
 - d. If the Encounter Performed QDM data element, FACE-TO-FACE INTERACTION during measurement period equals No, proceed to check next Procedure Performed.
 - e. If the Encounter Performed QDM data element, PREVENTIVE CARE SERVICES – ESTABLISHED OFFICE VISIT, 18 AND UP during measurement period equals Yes, include in the Initial Population and proceed to Denominator.
 - f. If the Encounter Performed QDM data element, PREVENTIVE CARE SERVICES – ESTABLISHED OFFICE VISIT, 18 AND UP during measurement period equals No, proceed to check next Encounter Performed.
 - g. If the Encounter Performed QDM data element, PREVENTIVE CARE SERVICES – INITIAL OFFICE VISIT, 18 AND UP during measurement period equals Yes, include in the Initial Population and proceed to Denominator.
 - h. If the Encounter Performed QDM data element, PREVENTIVE CARE SERVICES – INITIAL OFFICE VISIT, 18 AND UP during measurement period equals No, proceed to check next Encounter Performed.

- i. If the Encounter Performed QDM data element, HOME HEALTHCARE SERVICES during measurement period equals Yes, include in the Initial Population and proceed to Denominator.
 - j. If the Encounter Performed QDM data element, HOME HEALTHCARE SERVICES during measurement period equals No, do not include in Initial Population and stop processing.
4. Start Denominator
 - a. Denominator equals the Initial Population. Denominator is represented by the Letter b in the sample calculation listed at the end of this document. Letter b equals 10 patients in the sample calculation.
5. Start Denominator Exclusions
6. Check Procedure Performed:
 - a. If the Procedure Performed QDM data element HYSTERECTOMY WITH NO RESIDUAL CERVIX ends before end of measurement period equals Yes, include in Exclusions count. Exclusions are represented by the Letter c in the sample calculation listed at the end of this document. Letter c equals 2 patients in the sample calculation.
 - b. If the Procedure Performed QDM data element HYSTERECTOMY WITH NO RESIDUAL CERVIX ends before end of measurement period equals No, proceed to Numerator.
7. Start Numerator
8. Check Laboratory Test Performed:
 - a. If the Laboratory Test Performed QDM data element PAP TEST (result) less than or equal to 2 years ends before end of measurement period equals Yes, include in Numerator count. Numerator is represented by the Letter a in the sample calculation listed at the end of this document. Letter a equals 4 patients in the sample calculation.
 - b. If the Laboratory Test Performed QDM data element PAP TEST (result) less than or equal to 2 years ends before end of measurement period equals No, include in No/Missing Numerator Data Submitted count and stop processing.

SAMPLE CALCULATION:	
Performance Rate = $\frac{\text{Numerator (a=4 patients)}}{\text{Denominator (b=10 patients) - Denominator Exclusions (c=2 patients) - Denominator Exceptions (N/A)}} = 50.00\%$	= 50.00%