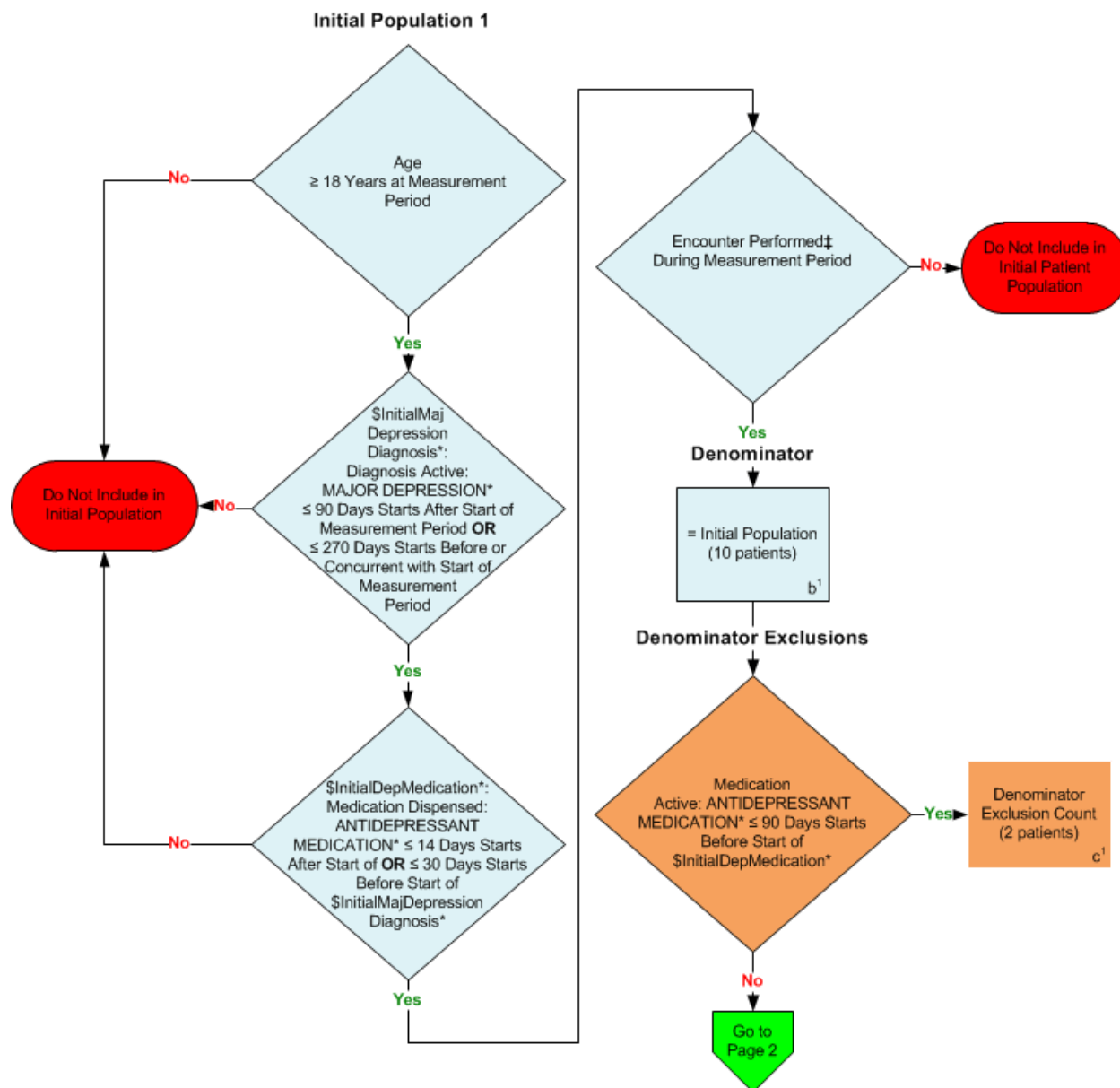


2014 eCQM Flow
Measure Identifier: CMS128v4
 NQF 0105: Anti-depressant Medication Management

This eCQM requires the reporting of two Performance Rates on two separate populations



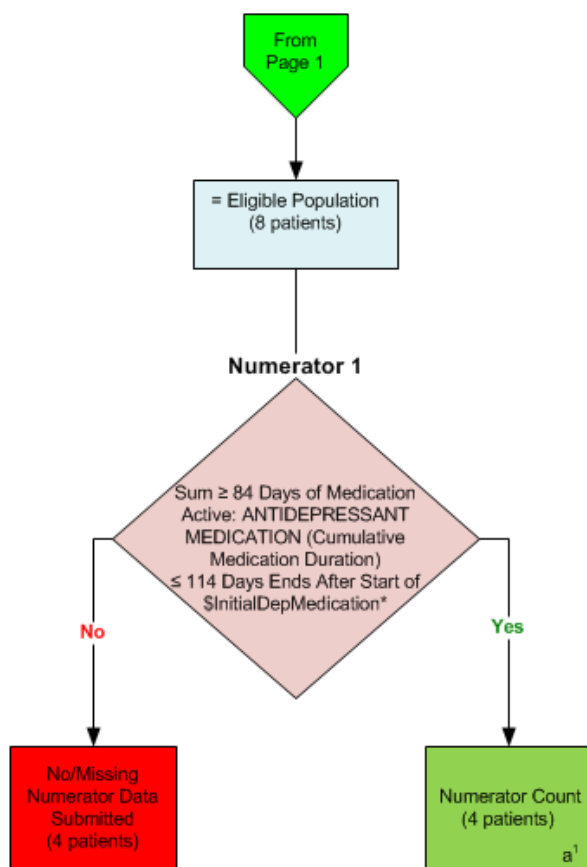
*Please refer to the specific section of the eCQM to identify the QDM data elements and associated value sets for use in reporting this eCQM.

‡For a listing of appropriate encounters, please refer to the Population Criteria and associated value sets as specific data elements have not been listed.

2014 eCQM Flow
Measure Identifier: CMS128v4

NQF 0105: Anti-depressant Medication Management

This eCQM requires the reporting of two Performance Rates on two separate populations



*Please refer to the specific section of the eCQM to identify the QDM data elements and associated value sets for use in reporting this eCQM.

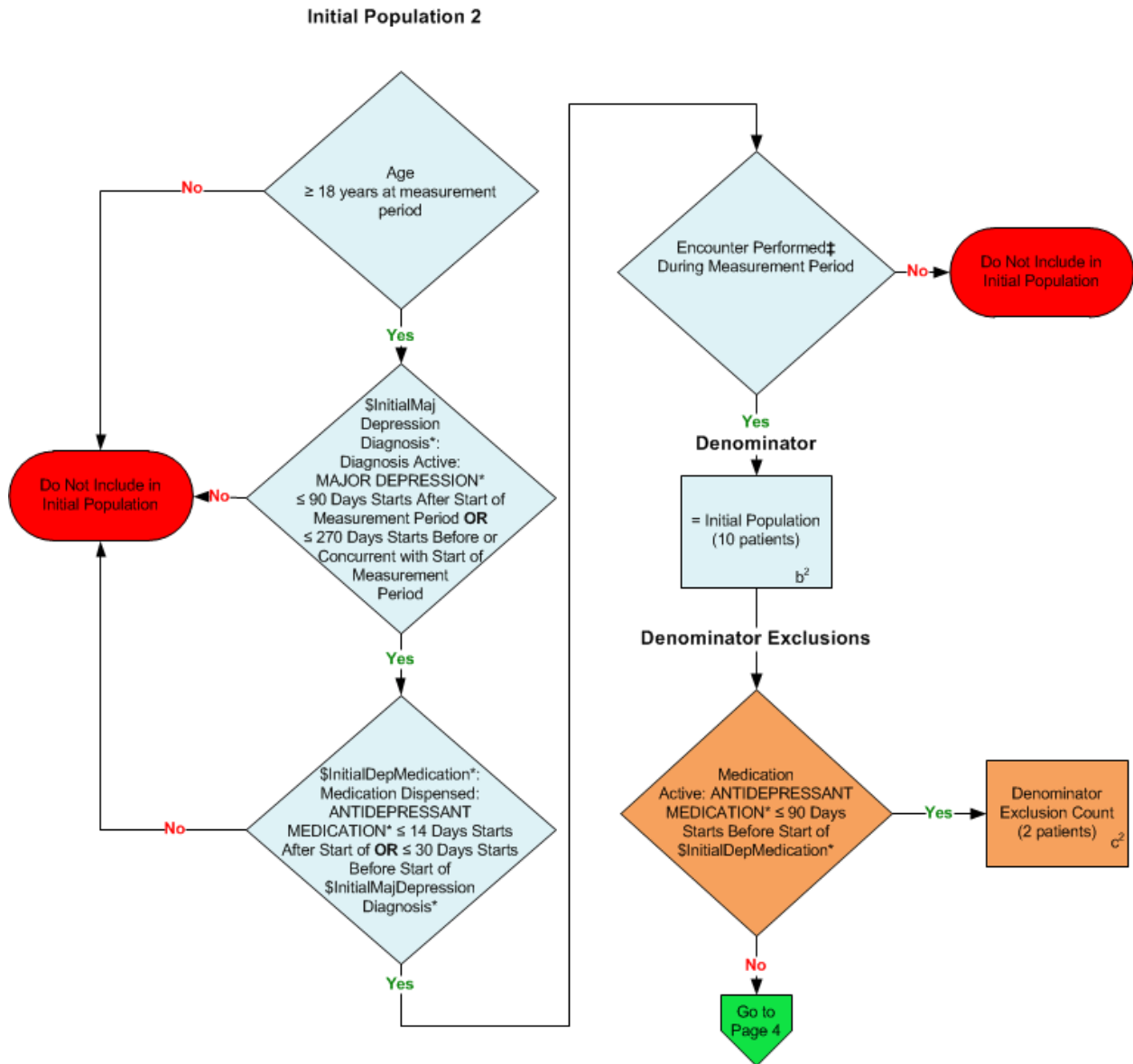
SAMPLE CALCULATION: *Combination of Initial Population; Denominator; Numerator 1*

Performance Rate =

$$\frac{\text{Numerator (a}^1\text{= 4 patients)}}{\text{Denominator (b}^1\text{=10 patients) – Denominator Exclusions (c}^1\text{=2 patients) – Denominator Exceptions (N/A)}} = 50.00\%$$

2014 eCQM Flow
Measure Identifier: CMS128v4
 NQF 0105: Anti-depressant Medication Management

This eCQM requires the reporting of two Performance Rates on two separate populations



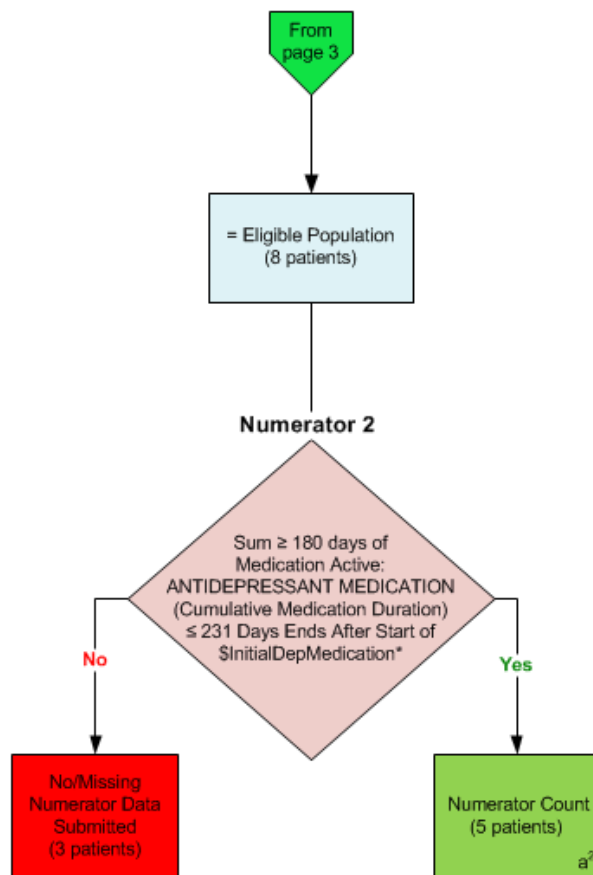
*Please refer to the specific section of the eCQM to identify the QDM data elements and associated value sets for use in reporting this eCQM.

‡For a listing of appropriate encounters, please refer to the Population Criteria and associated value sets as specific data elements have not been listed.

2014 eCQM Flow
Measure Identifier: CMS128v4

NQF 0105: Anti-depressant Medication Management

This eCQM requires the reporting of two Performance Rates on two separate populations



*Please refer to the specific section of the eCQM to identify the QDM data elements and associated value sets for use in reporting this eCQM.

SAMPLE CALCULATION: *Combination of Initial Population; Denominator; Numerator 2*

Performance Rate =

$$\frac{\text{Numerator (a}^2\text{=5 patients)}}{\text{Denominator (b}^2\text{=10 patients) – Denominator Exclusions (c}^2\text{=2 patients) – Denominator Exceptions (N/A)}} = 62.50\%$$

2014 eCQM Flows
Measure Identifier: CMS128v4
NQF 0105: Anti-Depressant Medication Management
This eCQM requires the reporting of two Performance Rates.

Please refer to the specific section of the eCQM to identify the Population Criteria and associated value sets for use in reporting this eCQM.

1. Start Initial Population 1 and 2:
2. Check Age: (Population 1 & 2)
 - a. If the AGE is greater than or equal to 18 years at measurement period equals No, do not include in Initial Population. Stop Processing.
 - b. If the AGE is greater than or equal to 18 years at measurement period equals Yes, proceed to check Diagnosis Active.
3. Check \$InitialMajDepressionDiagnosis: (Population 1 and 2)
 - a. If \$InitialMajDepressionDiagnosis First Diagnosis Active QDM data element, MAJOR DEPRESSION, less than or equal to 90 days starts after start of measurement period, OR less than or equal to 270 days starts before or concurrent with start of measurement equals No, stop processing.
 - b. If \$InitialMajDepressionDiagnosis First Diagnosis Active QDM data element, MAJOR DEPRESSION, less than or equal to 90 days starts after start of measurement period, OR less than or equal to 270 days starts before or concurrent with start of measurement equals Yes, proceed to check \$InitialDepMedication.
4. Check \$InitialDepMedication: (Population 1 & 2)
 - a. If \$InitialDepMedication First Medication Dispensed, QDM data element, ANTIDEPRESSANT MEDICATION, less than or equal to 14 days starts after start of OR less than or equal to 30 days starts before start of \$InitialMajDepressionDiagnosis (First Diagnosis Active, QDM data element, MAJOR DEPRESSION, less than or equal to 90 days starts after start of measurement period, OR less than or equal to 270 days starts before or concurrent with start of measurement), equals no, stop processing.
 - b. If \$InitialDepMedication First Medication Dispensed, QDM data element, ANTIDEPRESSANT MEDICATION, less than or equal to 14 days starts after start of OR less than or equal to 30 days starts before start of \$InitialMajDepressionDiagnosis (First Diagnosis Active, QDM data element, MAJOR DEPRESSION, less than or equal to 90 days starts after start of measurement period, OR less than or equal to 270 days starts before or concurrent with start of measurement), equals Yes, continue on to the Encounter Performed.
5. Check Encounter Performed: (Population 1 & 2)
 - a. If the Encounter Performed QDM data element, OFFICE VISIT, equals No, during measurement period, proceed to check next Encounter Performed.
 - b. If the Encounter Performed QDM data element, OFFICE VISIT, equals Yes, during measurement period, include in denominator.

- c. If the Encounter Performed QDM data element, PREVENTIVE CARE SERVICES – ESTABLISHED OFFICE VISIT, 18 AND UP, equals Yes, include in denominator.
 - d. If the Encounter Performed QDM data element, PSYCH VISIT – PSYCHOTHERAPY, equals Yes, during measurement period, include in denominator.
6. Start Denominator (Population 1 - b^1 or Population 2 - b^2):
- a. Denominator equals the Initial Population. Denominator is represented by Letter b^1 or b^2 in the sample calculation listed at the end of this document. Letter b^1 or b^2 equals 10 patients in the sample calculation.
7. Start Denominator Exclusions
8. Check Medication Active: (Population 1- c^1 or Population 2 - c^2)
- a. If the Medication Active QDM data element, ANTIDEPRESSANT MEDICATION, less than or equal to 90 days starts before start of \$InitialDepMedication (First Medication Dispensed, QDM data element, ANTIDEPRESSANT MEDICATION, less than or equal to 14 days starts after start of OR less than or equal to 30 days starts before start of \$InitialMajDepressionDiagnosis [First Diagnosis Active, QDM data element, MAJOR DEPRESSION, less than or equal to 90 days starts after start of measurement period, OR less than or equal to 270 days starts before or concurrent with start of measurement]), equals No, do not include in the Denominator Exclusion Count and continue on to Numerator 1 and Numerator 2.
 - b. If the Medication Active QDM data element, ANTIDEPRESSANT MEDICATION, less than or equal to 90 days starts before start of \$InitialDepMedication (First Medication Dispensed, QDM data element, ANTIDEPRESSANT MEDICATION, less than or equal to 14 days starts after start of OR less than or equal to 30 days starts before start of \$InitialMajDepressionDiagnosis [First Diagnosis Active, QDM data element, MAJOR DEPRESSION, less than or equal to 90 days starts after start of measurement period, OR less than or equal to 270 days starts before or concurrent with start of measurement]), equals Yes, include in the Denominator Exclusion Count which is represented by Letter c^1 or c^2 in the sample calculations listed at the end of this document. Letter c^1 or c^2 equals 2 patients in the sample calculation. Go to Numerator – Population 1.
9. Start Numerator 1 – Population 1 – a^1 (Two Performance Rates are Expected)
10. Check Medication Active: (Sum Greater than or Equal to 84 days)
- a. If the Medication Active QDM data element, ANTIDEPRESSANT MEDICATION, (cumulative medication duration greater than or equal to 84 days) less than or equal to 114 days ends after start of \$InitialDepMedication (First Medication Dispensed, QDM data element, ANTIDEPRESSANT MEDICATION, less than or equal to 14 days starts after start of OR less than or equal to 30 days starts before start of \$InitialMajDepressionDiagnosis [First Diagnosis Active, QDM data element, MAJOR DEPRESSION, less than or equal to 90 days starts after start of measurement period, OR less than or equal to 270 days starts before or concurrent with start of measurement]), equals No, include in the No/Missing Data Submitted count and continue on to Numerator 2.

- b. If the Medication Active QDM data element, ANTIDEPRESSANT MEDICATION, (cumulative medication duration greater than or equal to 84 days) less than or equal to 114 days ends after start of \$InitialDepMedication (First Medication Dispensed, QDM data element, ANTIDEPRESSANT MEDICATION, less than or equal to 14 days starts after start of OR less than or equal to 30 days starts before start of \$InitialMajDepressionDiagnosis [First Diagnosis Active, QDM data element, MAJOR DEPRESSION, less than or equal to 90 days starts after start of measurement period, OR less than or equal to 270 days starts before or concurrent with start of measurement]), equals Yes, include in Numerator 1 Count, which is represented by Letter a¹ in the sample calculation listed at the end of this document. Letter a¹ equals 4 patients in the sample calculation. Continue on to Numerator 2, Population 2.

SAMPLE CALCULATION: *Combination of Initial Population; Denominator; Numerator 1*

Performance Rate =

$$\frac{\text{Numerator (a}^1=4 \text{ patients)}}{\text{Denominator (b}^1=10 \text{ patients)} - \text{Denominator Exclusions (c}^1=2 \text{ patients)} - \text{Denominator Exceptions (N/A)}} = 50.00\%$$

11. Start Numerator 2 – Population 2- a2 (Two Performance Rates are Expected)

12. Check Medication Active: (Sum Greater or less than 180 days)

- a. If the Medication Active QDM data element, ANTIDEPRESSANT MEDICATION, (cumulative medication duration greater than or equal to 180 days) less than or equal to 231 days ends after start of \$InitialDepMedication (First Medication Dispensed, QDM data element, ANTIDEPRESSANT MEDICATION, less than or equal to 14 days starts after start of OR less than or equal to 30 days starts before start of \$InitialMajDepressionDiagnosis [First Diagnosis Active, QDM data element, MAJOR DEPRESSION, less than or equal to 90 days starts after start of measurement period, OR less than or equal to 270 days starts before or concurrent with start of measurement]), equals No, include in the No/Missing Data Submitted count. Stop Processing.
- b. If the Medication Active QDM data element, ANTIDEPRESSANT MEDICATION, (cumulative medication duration greater than or equal to 180 days) less than or equal to 231 days ends after start of \$InitialDepMedication (First Medication Dispensed, QDM data element, ANTIDEPRESSANT MEDICATION, less than or equal to 14 days starts after start of OR less than or equal to 30 days starts before start of \$InitialMajDepressionDiagnosis [First Diagnosis Active, QDM data element, MAJOR DEPRESSION, less than or equal to 90 days starts after start of measurement period, OR less than or equal to 270 days starts before or concurrent with start of measurement]), equals Yes, include in Numerator 2 Count, which is represented by Letter a² in the sample calculation listed at the end of this document. Letter a² equals 5 patients in the sample calculation. Stop Processing.

SAMPLE CALCULATION: *Combination of Initial Population; Denominator; Numerator 2*

Performance Rate =

$$\frac{\text{Numerator (a}^2=5 \text{ patients)}}{\text{Denominator (b}^2=10 \text{ patients)} - \text{Denominator Exclusions (c}^2=2 \text{ patients)} - \text{Denominator Exceptions (N/A)}} = 62.50\%$$