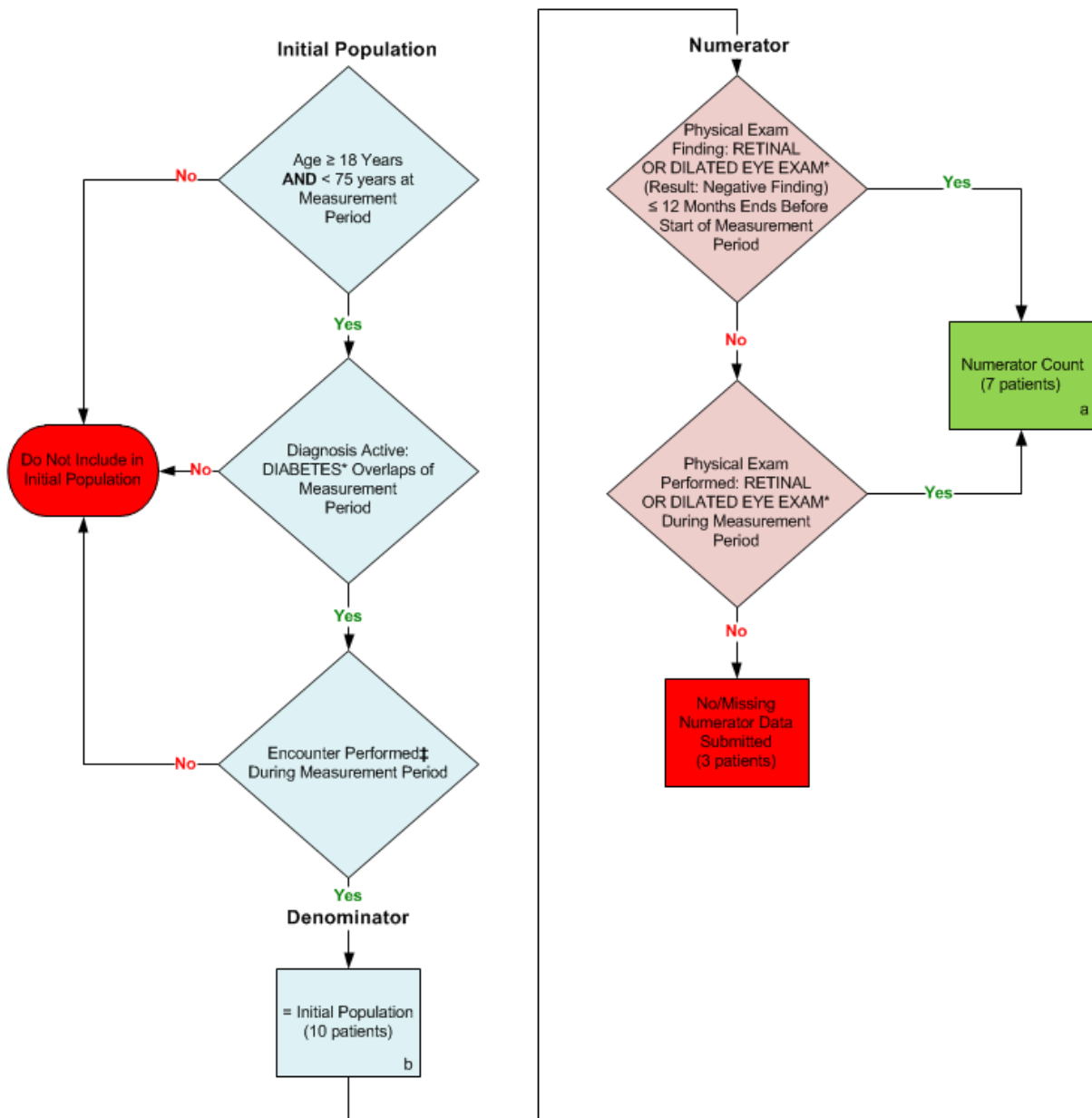


2014 eCQM Measure Flows
Measure Identifier: CMS131v4
 NQF 0055: Diabetes: Eye Exam



*Please refer to the specific section of the eMeasure to identify the QDM data elements and associated value sets for use in reporting this eMeasure.
 ‡For a listing of appropriate encounters, please refer to the Population Criteria and associated value sets as specific data elements have not been listed.

SAMPLE CALCULATION:

Performance Rate =

$$\frac{\text{Numerator (a= 7 patients)}}{\text{Denominator (b=10 patients) – Denominator Exclusions (c=N/A) – Denominator Exceptions (N/A)}} = 70.00\%$$

2014 eCQM Flows
Measure Identifier: CMS131v4
NQF 0055: Diabetes: Eye Exam

Please refer to the specific section of the eCQM to identify the Population Criteria and associated value sets for use in reporting this eCQM.

1. Start Initial Population
2. Check Age:
 - a. If the AGE is greater than or equal to 18 years AND less than 75 years at measurement period, equals Yes, proceed to check Diagnosis Active.
 - b. If the Age is greater than or equal to 18 years AND less than 75 years at measurement period, equals No, do not include in Initial Population. Stop Processing.
3. Check Diagnosis Active:
 - a. If the Diagnosis Active QDM data element, DIABETES, overlaps the measurement period, equals Yes, continue processing and proceed to check Encounter Performed.
 - b. If the Diagnosis Active QDM data element, DIABETES, overlaps the measurement period, equals No, do not include in the Initial Population. Stop Processing.
4. Check Encounter Performed:
 - a. If the Encounter Performed QDM data element, OFFICE VISIT, equals Yes, during the measurement period, include in the Initial Population and proceed to the Denominator.
 - b. If the Encounter Performed QDM data element, OFFICE VISIT, equals No, during the measurement period, proceed to check next Encounter Performed.
 - c. If the Encounter Performed QDM data element, FACE-TO-FACE INTERACTION, equals Yes, during the measurement period, include in the Initial Population and proceed to the Denominator.
 - d. If the Encounter Performed QDM data element, FACE-TO-FACE INTERACTION, equals No, during the measurement period, proceed to check next Encounter Performed.
 - e. If the Encounter Performed QDM data element, PREVENTIVE CARE SERVICES – ESTABLISHED OFFICE VISIT, 18 AND UP, equals Yes, during the measurement period, include in the Initial Population and proceed to the Denominator.
 - f. If the Encounter Performed QDM data element, PREVENTIVE CARE SERVICES – ESTABLISHED OFFICE VISIT, 18 AND UP, equals No, during the measurement period, proceed to check next Encounter Performed.
 - g. If the Encounter Performed QDM data element, PREVENTIVE CARE SERVICES – INITIAL OFFICE VISIT, 18 AND UP, equals Yes, during the measurement period, include in the Initial Population and proceed to the Denominator.

- h. If the Encounter Performed QDM data element, PREVENTIVE CARE SERVICES – INITIAL OFFICE VISIT, 18 AND UP, equals No, during the measurement period, proceed to check next Encounter Performed.
 - i. If the Encounter Performed QDM data element, HOME HEALTHCARE SERVICES, equals Yes, during the measurement period, include in the Initial Population and proceed to the Denominator.
 - j. If the Encounter Performed QDM data element, HOME HEALTHCARE SERVICES, equals No, during the measurement period, proceed to check next Encounter Performed.
 - k. If the Encounter Performed QDM data element, ANNUAL WELLNESS VISIT, equals Yes, during the measurement period, include in the Initial Population and proceed to the Denominator.
 - l. If the Encounter Performed QDM data element, ANNUAL WELLNESS VISIT, equals No, during the measurement period, do not include in the Initial Patient Population. Stop Processing.
 - m. If the Encounter Performed QDM data element, OPHTHALMOLOGICAL SERVICES, equals Yes, during the measurement period, include in the Initial Population and proceed to the Denominator.
 - n. If the Encounter Performed QDM data element, OPHTHALMOLOGICAL SERVICES, equals No, during the measurement period, do not include in the Initial Patient Population. Stop Processing
5. Start Denominator
- a. Denominator equals the Initial Population. Denominator is represented by letter b in the sample calculation listed at the end of this document. Letter b equals 10 patients in the sample calculation.
6. Start Numerator
7. Check Physical Exam Finding:
- a. If the Physical Exam Finding QDM data element, RETINAL OR DILATED EYE EXAM, (Result: Negative Finding) less than or equal 12 months ends before start of measurement period, equals Yes, include in Numerator Count, which is represented by letter a in the sample calculation listed at the end of this document. Letter a equals 7 patients in the sample calculation. Stop Processing.
 - b. If the Physical Exam Finding QDM data element, RETINAL OR DILATED EYE EXAM, (Result: Negative Finding) less than or equal 12 months ends before start of measurement period, equals No, proceed to check next Physical Exam Performed.
8. Check Physical Exam Performed.
- a. If Physical Exam Performed QDM data element, RETINAL OR DILATED EYE EXAM, during measurement period, equals Yes, include in Numerator Count, which is represented by Letter a in the sample calculation listed at the end of this document. Letter a equals 7 patients in the sample calculation. Stop Processing.

- b. If Physical Exam Performed QDM data element, RETINAL OR DILATED EYE EXAM, during measurement period, equals No, include in the No/Missing Data Submitted count. Stop Processing.

SAMPLE CALCULATION:

Performance Rate =

$$\frac{\text{Numerator (a= 7 patients)}}{\text{Denominator (b=10 patients) – Denominator Exclusions (c=N/A) – Denominator Exceptions (N/A)}} = 70.00\%$$