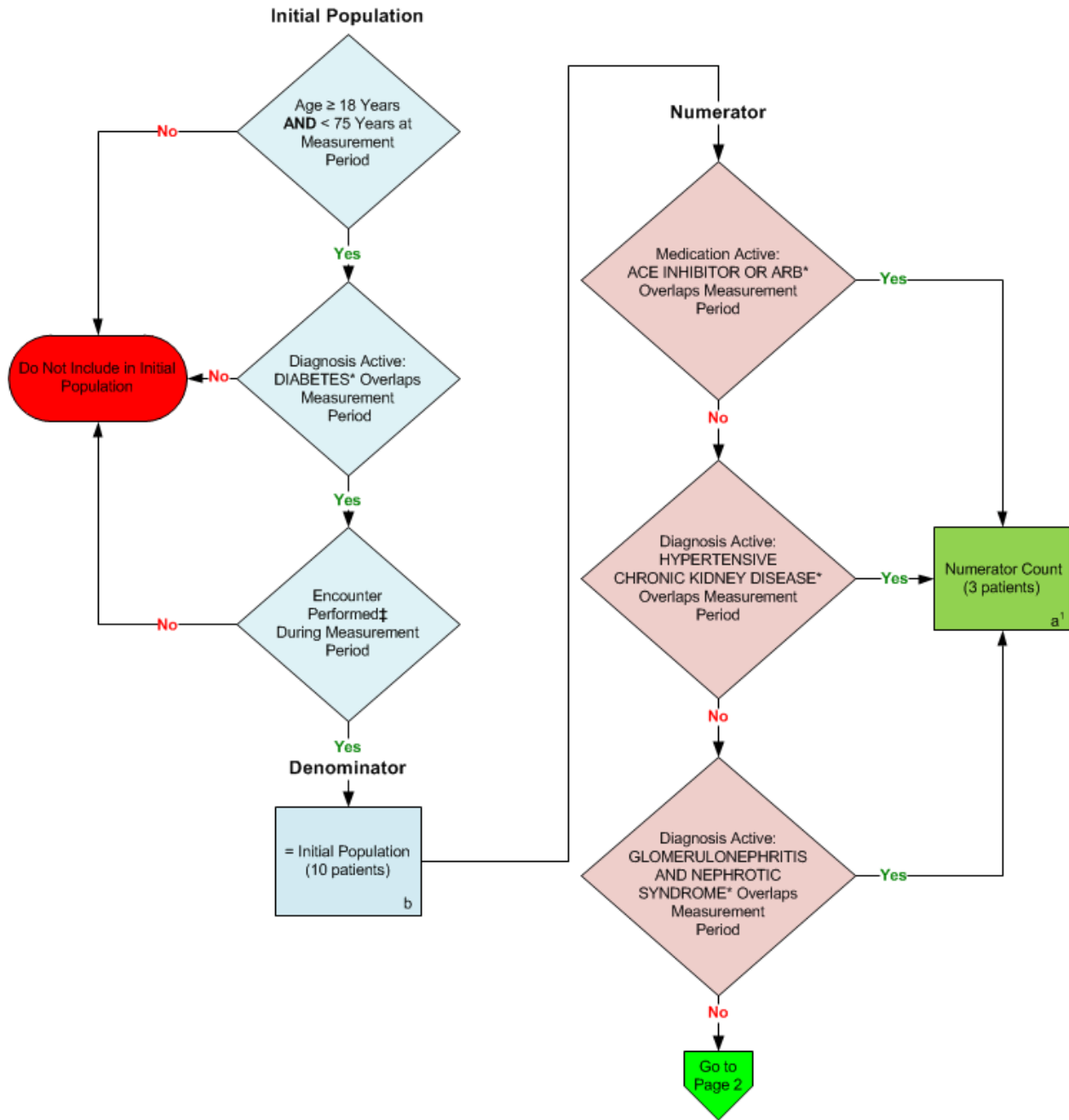
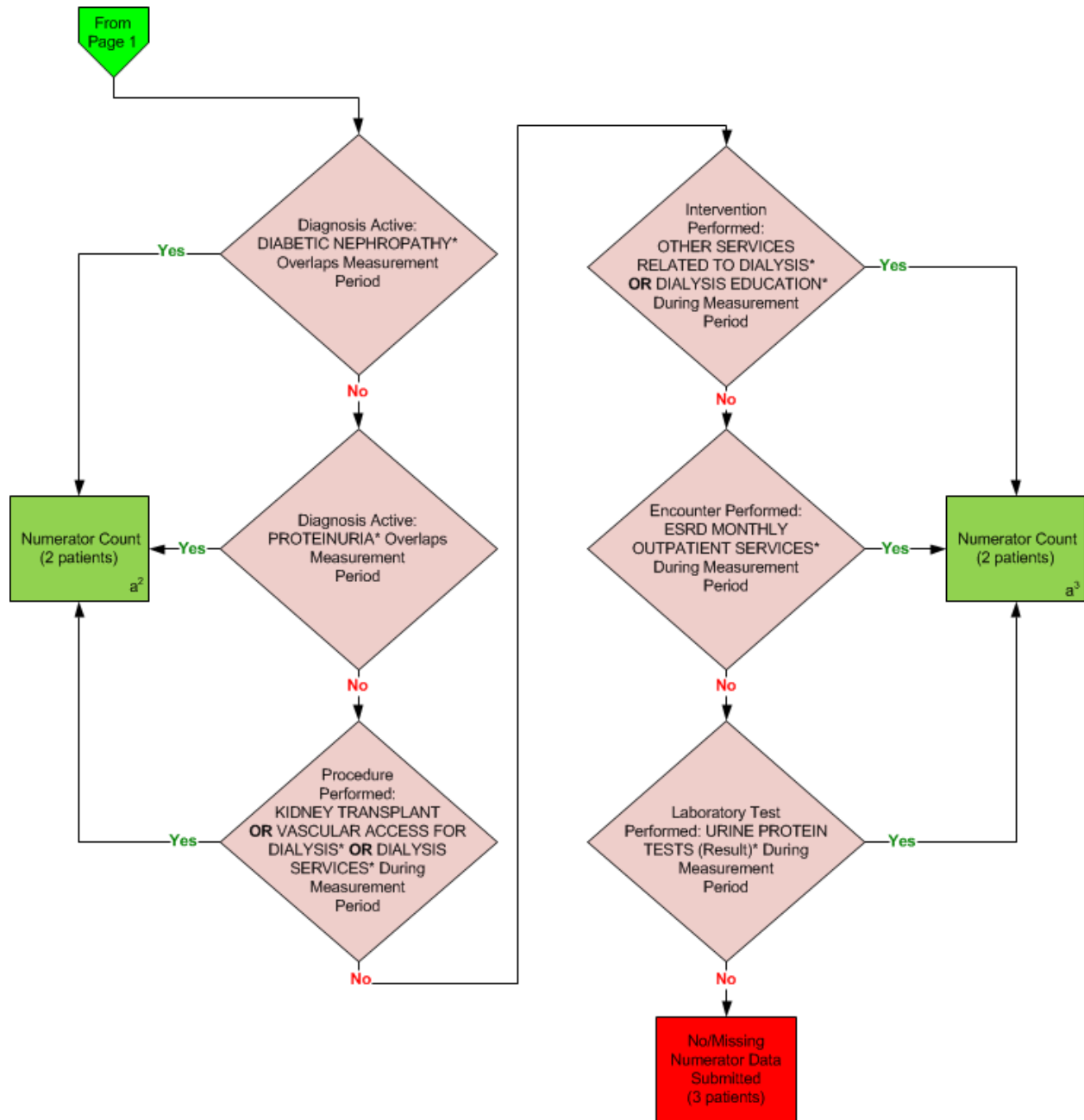


2014 eCQM Flow
Measure Identifier: CMS134v4
 NQF 0062: Diabetes: Urine Protein Screening



*Please refer to the specific section of the eMeasure to identify the QDM data elements and associated value sets for use in reporting this eMeasure.
 ‡For a listing of appropriate encounters please refer to the Population Criteria and associated value sets as specific data elements have not been listed.

2014 eCQM Flow
Measure Identifier: CMS134v4
 NQF 0062: Diabetes: Urine Protein Screening



*Please refer to the specific section of the eMeasure to identify the QDM data elements and associated value sets for use in reporting this eMeasure.

SAMPLE CALCULATION:

Performance Rate =

$$\frac{\text{Numerator } (a^1 + a^2 + a^3 = 7 \text{ patients})}{\text{Denominator } (b = 10 \text{ patients}) - \text{Denominator Exclusions } (c = N/A) - \text{Denominator Exceptions } (N/A)} = 70.00\%$$

2014 eCQM Flows
Measure Identifier: CMS134v4
NQF 0062: Diabetes: Urine Protein Screening

Please refer to the specific section of the eCQM to identify the Population Criteria and associated value sets for use in reporting this eCQM.

1. Start Initial Population
2. Check Age:
 - a. If the AGE is greater than or equal to 18 years and less than 75 years at measurement period equals Yes, proceed to check Diagnosis Active.
 - b. If the AGE is greater than or equal to 18 years and less than 75 years at measurement period equals No, do not include in Initial Population. Stop Processing.
3. Check Diagnosis Active:
 - a. If the Diagnosis Active QDM data element, DIABETES, overlaps measurement period, equals Yes, proceed to check Encounter Performed
 - b. If the Diagnosis Active QDM data element, DIABETES, overlaps measurement period, equals No, do not include in the Initial Population. Stop Processing.
4. Check Encounter Performed:
 - a. If the Encounter Performed QDM data element, OFFICE VISIT, equals Yes, during the measurement period, include in the Initial Population and proceed to the Denominator.
 - b. If the Encounter Performed QDM data element, OFFICE VISIT, equals No, during the measurement period, proceed to check next Encounter Performed.
 - c. If the Encounter Performed QDM data element, FACE-TO-FACE INTERACTION, equals Yes, during the measurement period, include in the Initial Population and proceed to the Denominator.
 - d. If the Encounter Performed QDM data element, FACE-TO-FACE INTERACTION, equals No, during the measurement period, proceed to check next Encounter Performed.
 - e. If the Encounter Performed QDM data element, PREVENTIVE CARE SERVICES – ESTABLISHED OFFICE VISIT, 18 AND UP, equals Yes, during the measurement period, include in the Initial Population and proceed to the Denominator.
 - f. If the Encounter Performed QDM data element, PREVENTIVE CARE SERVICES – ESTABLISHED OFFICE VISIT, 18 AND UP, equals No, during the measurement period, proceed to check next Encounter Performed.
 - g. If the Encounter Performed QDM data element, PREVENTIVE CARE SERVICES – INITIAL OFFICE VISIT, 18 AND UP, equals Yes, during the measurement period, include in the Initial Population and proceed to the Denominator.
 - h. If the Encounter Performed QDM data element, PREVENTIVE CARE SERVICES – INITIAL OFFICE VISIT, 18 AND UP, equals No, during the measurement period, proceed to check next Encounter Performed.

- i. If the Encounter Performed QDM data element, HOME HEALTHCARE SERVICES, equals Yes, during the measurement period, include in the Initial Population and proceed to the Denominator.
 - j. If the Encounter Performed QDM data element, HOME HEALTHCARE SERVICES, equals No, during the measurement period, proceed to check next Encounter Performed.
 - k. If the Encounter Performed QDM data element, ANNUAL WELLNESS VISIT, equals Yes, during the measurement period, include in the Initial Population and proceed to the Denominator.
 - l. If the Encounter Performed QDM data element, ANNUAL WELLNESS VISIT, equals No, during the measurement period, do not include in the Initial Population. Stop Processing.
5. Start Denominator
- a. Denominator equals the Initial Population. Denominator is represented by Letter b in the sample calculation listed at the end of this document. Letter b equals 10 patients in the sample calculation.
6. Start Numerator
7. Check Medication Active:
- a. If the Medication Active QDM data element, ACE INHIBITOR OR ARB, overlaps measurement period equals Yes, include in Numerator Count, which is represented by Letter a in the sample calculation listed at the end of this document. Letter a1 equals 3 patients in the sample calculation. Stop Processing.
 - b. If the Medication Active QDM data element, ACE INHIBITOR OR ARB, overlaps measurement period equals No, do not include in the Numerator Count and proceed to check Diagnosis Active.
8. Check Diagnosis Active:
- a. If the Diagnosis Active QDM data element, HYPERTENSIVE CHRONIC KIDNEY DISEASE, overlaps measurement period equals Yes, include in Numerator Count. The Numerator Count is represented by Letter a in the sample calculation listed at the end of this document. Letter a1 equals 3 patients in the sample calculation. Stop Processing.
 - b. If the Diagnosis Active QDM data element, HYPERTENSIVE CHRONIC KIDNEY DISEASE, overlaps measurement period equals No, do not include in the Numerator Count and proceed to check next Diagnosis Active.
9. Check Diagnosis Active:
- a. If the Diagnosis Active QDM data element, GLOMERULONEPHRITIS AND NEPHROTIC SYNDROME, overlaps measurement period equals Yes, include in Numerator Count. The Numerator Count is represented by Letter a in the sample calculation listed at the end of this document. Letter a1 equals 3 patients in the sample calculation. Stop Processing.

- b. If the Diagnosis Active QDM data element, HYPERTENSIVE CHRONIC KIDNEY DISEASE, overlaps measurement period equals No, do not include in the Numerator Count and proceed to check next Diagnosis Active.

10. Check Diagnosis Active

- a. If the Diagnosis Active QDM data element, DIABETIC NEPHROPATHY, overlaps measurement period equals Yes, include in Numerator Count. The Numerator Count is represented by Letter a in the sample calculation listed at the end of this document. Letter a2 equals 2 patients in the sample calculation. Stop Processing.
- b. If the Diagnosis Active QDM data element, DIABETIC NEPHROPATHY, overlaps measurement period equals No, do not include in the Numerator Count and proceed to check next Diagnosis Active.

11. Check Diagnosis Active

- a. If the Diagnosis Active QDM data element, PROTEINURIA, overlaps measurement period equals Yes, include in Numerator Count, which is represented by Letter a in the sample calculation listed at the end of this document. Letter a2 equals 2 patients in the sample calculation. Stop Processing.
- b. If the Diagnosis Active QDM data element, PROTEINURIA, overlaps measurement period equals No, do not include in the Numerator Count and proceed to check Procedure Performed.

12. Check Procedure Performed:

- a. If the Procedure Performed QDM data element, KIDNEY TRANSPLANT, or VASCULAR ACCESS FOR DIALYSIS, or DIALYSIS SERVICES, during measurement period equals Yes, include in Numerator Count. The Numerator Count is represented by Letter a in the sample calculation listed at the end of this document. Letter a2 equals 2 patients in the sample calculation. Stop Processing.
- b. If the Procedure Performed QDM data element, KIDNEY TRANSPLANT, or VASCULAR ACCESS FOR DIALYSIS, or DIALYSIS SERVICES, during measurement period equals No, do not include in the Numerator Count and proceed to check Intervention Performed.

13. Check Intervention Performed:

- a. If the Intervention Performed QDM data element, OTHER SERVICES RELATED TO DIALYSIS or DIALYSIS EDUCATION, during measurement period equals Yes, include in Numerator Count. The Numerator Count is represented by Letter a in the sample calculation listed at the end of this document. Letter a3 equals 2 patients in the sample calculation. Stop Processing.
- b. If the Intervention Performed QDM data element, OTHER SERVICES RELATED TO DIALYSIS or DIALYSIS EDUCATION, during measurement period equals No, do not include in the Numerator Count and proceed to check Encounter Performed.

14. Check Encounter Performed:

- a. If the Encounter Performed QDM data element, ESRD MONTHLY OUTPATIENT SERVICES, during measurement period equals Yes, include in Numerator Count. The Numerator Count is represented by Letter a in the sample calculation listed at

- the end of this document. Letter a3 equals 2 patients in the sample calculation. Stop Processing.
- b. If the Encounter Performed QDM data element, ESRD MONTHLY OUTPATIENT SERVICES, during measurement period equals No, do not include in the Numerator Count and proceed to check Laboratory Test Performed.
15. Check Laboratory Test Performed:
- a. If the Laboratory Test Performed QDM data element, URINE PROTEIN TESTS (Results) during measurement period equals Yes, include in Numerator Count. The Numerator Count is represented by Letter a in the sample calculation listed at the end of this document. Letter a3 equals 2 patients in the sample calculation. Stop Processing.
 - b. If the Laboratory Test Performed QDM data element, URINE PROTEIN TESTS (Results) during measurement period equals No, include in the No/Missing Data Submitted count. Stop Processing.

SAMPLE CALCULATION:

Performance Rate =

$$\frac{\text{Numerator (a}^1 + \text{a}^2 + \text{a}^3 = 7 \text{ patients)}}{\text{Denominator (b = 10 patients) - Denominator Exclusions (c = N/A) - Denominator Exceptions (N/A)}} = 70.00\%$$