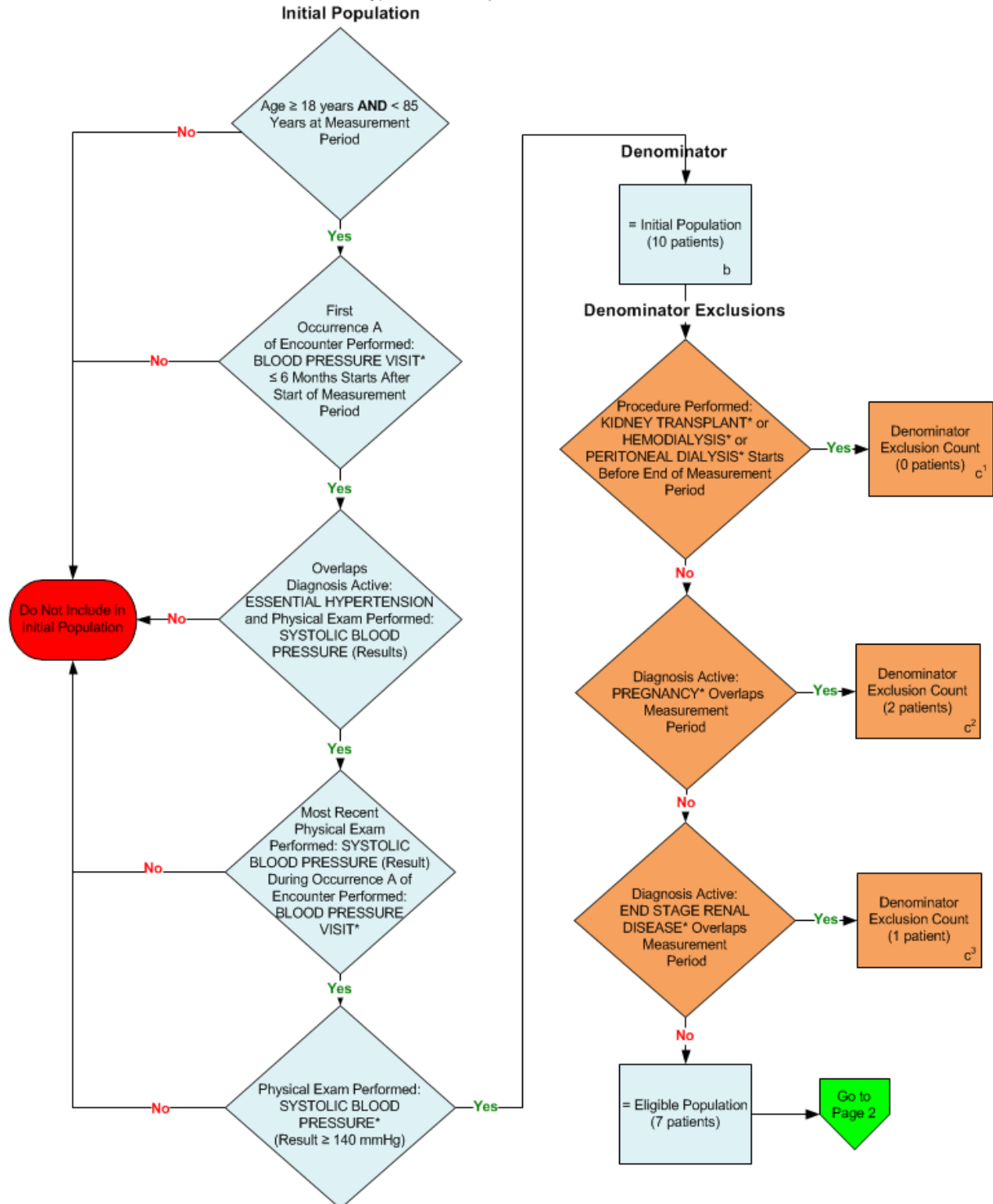


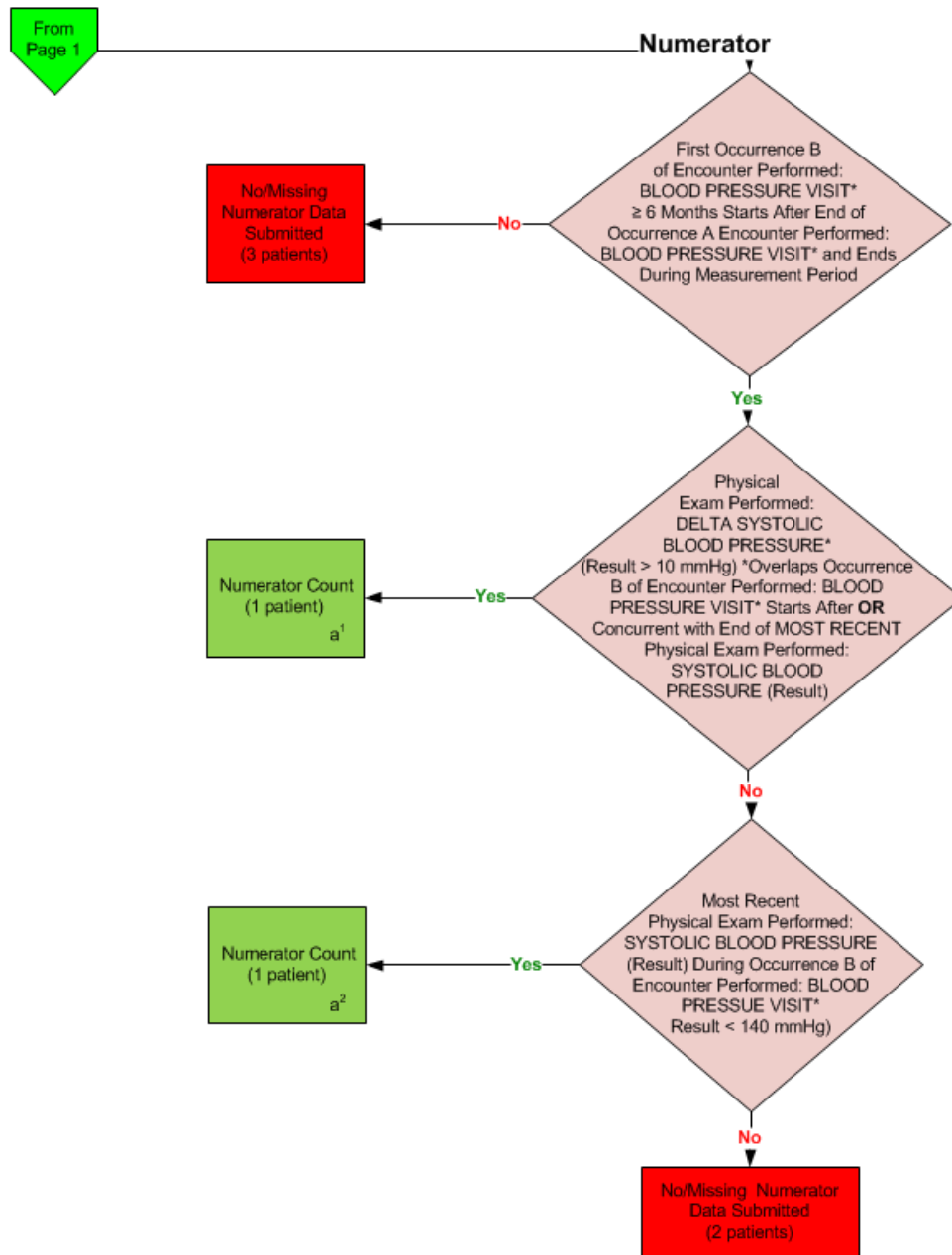
2014 eCQM Flow
Measure Identifier: CMS65v5.1

Hypertension: Improvement in Blood Pressure



*Please refer to the specific section of the eCQM to identify the QDM data elements and associated value sets for use in reporting this eCQM.

2014 eCQM Flow
Measure Identifier: CMS65v5.1
Hypertension: Improvement in Blood Pressure



*Please refer to the specific section of the eCQM to identify the QDM data elements and associated value sets for use in reporting this eCQM.

SAMPLE CALCULATION:

Performance Rate =

$$\frac{\text{Numerator } (a^1 + a^2 = 2 \text{ patients})}{\text{Denominator } (b = 10 \text{ patients}) - \text{Denominator Exclusions } (c^1 + c^2 + c^3 = 3 \text{ patients}) - \text{Denominator Exceptions } (N/A)} = 28.57\%$$

2014 eCQM Flows
Measure Identifier: CMS65v5.1
Hypertension: Improvement in Blood Pressure

Please refer to the specific section of the eCQM to identify the Population Criteria and associated value sets for use in reporting this eCQM.

1. Start Initial Population
2. Check Age:
 - a. If the AGE is greater than or equal to 18 years and less than 85 years of age at measurement period equals No, do not include in Initial Population. Stop Processing.
 - b. If the AGE is greater than or equal to 18 years and less than 85 years of age at measurement period equals Yes, proceed to check First Occurrence A of Encounter Performed.
3. Check First Occurrence A Encounter Performed:
 - a. If the First Occurrence A of Encounter Performed QDM data element, BLOOD PRESSURE VISIT, less than or equal to 6 months, starts after start of measurement period equals No, do not include in the Initial Population. Stop Processing.
 - b. If the First Occurrence A of Encounter Performed QDM data element, BLOOD PRESSURE VISIT, less than or equal to 6 months, starts after start of measurement period equals Yes, proceed to check Overlaps Diagnosis Active.
4. Check Overlaps Diagnosis Active:
 - a. If the Diagnosis Active QDM data element overlaps ESSENTIAL HYPERTENSION and Physical Exam Performed, SYSTOLIC BLOOD PRESSURE (Result) equals No, do not include in the Initial Population. Stop Processing.
 - b. If the Diagnosis Active QDM data element overlaps ESSENTIAL HYPERTENSION and Physical Exam Performed, SYSTOLIC BLOOD PRESSURE (Result) equals Yes, proceed to check Most Recent Physical Exam Performed.
5. Check Most Recent Physical Exam Performed:
 - a. If Most Recent Physical Exam Performed QDM data element, SYSTOLIC BLOOD PRESSURE (Result), during Occurrence A of Encounter Performed QDM data element, BLOOD PRESSURE VISIT equals No, do not include in the Initial Population. Stop Processing.
 - b. If Most Recent Physical Exam Performed QDM data element, SYSTOLIC BLOOD PRESSURE (Result), during Occurrence A of Encounter Performed QDM data element, BLOOD PRESSURE VISIT equals Yes, proceed to check Physical Exam Performed.
6. Check Physical Exam Performed:

- a. If the Physical Exam Performed QDM data element, SYSTOLIC BLOOD PRESSURE (result greater than or equal to 140 mmHg) equals No, do not include in the Patient Population. Stop Processing.
- b. If the Physical Exam Performed QDM data element, SYSTOLIC BLOOD PRESSURE (result greater than or equal to 140 mmHg) equals Yes, proceed to Denominator.

7. Start Denominator

- a. Denominator equals the Initial Population. Denominator is represented by Letter b in the sample calculation listed at the end of this document. Letter b equals 10 patients in the sample calculation.

8. Start Denominator Exclusions

9. Check Procedure Performed:

- a. If the Procedure Performed QDM data element, KIDNEY TRANSPLANT, or QDM data element, HEMODIALYSIS, or QDM data element, PERITONEAL DIALYSIS, starts before end of measurement period equals No, do not include in the Denominator Exclusion Count and proceed to check Diagnosis Active.
- b. If the Procedure Performed QDM data element, KIDNEY TRANSPLANT, or QDM data element, HEMODIALYSIS, or QDM data element, PERITONEAL DIALYSIS, starts before end of measurement period equals Yes, include in the Denominator Exclusion Count which is represented by Letter c1 in the sample calculation listed at the end of this document. Letter c1 equals 0 patients in the sample calculation. Stop Processing.

10. Check Diagnosis Active:

- a. If the Diagnosis Active QDM data element, PREGNANCY, overlaps measurement period equals No, do not include in the Denominator Exclusion Count and proceed to check next Diagnosis Active.
- b. If the Diagnosis Active QDM data element, PREGNANCY, overlaps measurement period equals Yes, include in the Denominator Exclusion Count which is represented by Letter c2 in the sample calculation listed at the end of this document. Letter c2 equals 2 patients in the sample calculation. Stop Processing.

11. Check Diagnosis Active:

- a. If the Diagnosis Active QDM data element, END STAGE RENAL DISEASE, overlaps measurement period equals No, do not include in the Denominator Exclusion Count and proceed to Start Numerator.
- b. If the Diagnosis Active QDM data element, END STAGE RENAL DISEASE, overlaps measurement period equals Yes, include in the Denominator Exclusion Count which is represented by Letter c3 in the sample calculation listed at the end of this document. Letter c3 equals 1 patient in the sample calculation. Stop Processing.

12. Start Numerator

13. Check First Occurrence B of Encounter Performed:

- a. If the First Occurrence B of Encounter Performed QDM data element, BLOOD PRESSURE VISIT, greater than or equal to 6 months, starts after end of Occurrence A of Encounter Performed QDM data element, BLOOD PRESSURE VISIT and ends during measurement period equals No, include in the No/Missing Data Submitted count. Stop Processing.
- b. If the First Occurrence B of Encounter Performed QDM data element, BLOOD PRESSURE VISIT, greater than or equal to 6 months, starts after end of Occurrence A of Encounter Performed QDM data element, BLOOD PRESSURE VISIT and ends during measurement period equals Yes, proceed to check Physical Exam Finding.

14. Check Physical Exam Performed:

- a. If the Physical Exam Performed QDM data element, DELTA SYSTOLIC BLOOD PRESSURE (result greater than or equal to 10 mmHg) overlaps Occurrence B of Encounter Performed QDM data element BLOOD PRESSURE VISIT starts after OR Concurrent with end of Most Recent Physical Exam Performed QDM data element SYSTOLIC BLOOD PRESSURE (Result) equals No, proceed to check Most Recent Physical Exam Performed.
- b. If the QDM data element, DELTA SYSTOLIC BLOOD PRESSURE (result greater than or equal to 10 mmHg), starts after or concurrent with end of Most Recent, Physical Exam Performed, SYSTOLIC BLOOD PRESSURE (Result) during Occurrence B of Encounter Performed, BLOOD PRESSURE VISIT, and overlaps Occurrence B of Encounter Performed of the QDM data element, BLOOD PRESSURE VISIT equals Yes, include in the Numerator Count which is represented by Letter a1 in the sample calculation listed at the end of this document. Letter a1 equals 1 patient in the sample calculation. Stop Processing.

15. Check Most Recent Physical Exam Performed:

- a. If the Most Recent Physical Exam Performed QDM data element, SYSTOLIC BLOOD PRESSURE (result) during Occurrence B of Encounter Performed, QDM data element BLOOD PRESSURE VISIT (result less than 140 mmHg) equals No, include in the No/Missing Data Submitted count. Stop Processing.
- b. If the Most Recent Physical Exam Performed QDM data element, SYSTOLIC BLOOD PRESSURE (result) during Occurrence B of Encounter Performed, QDM data element BLOOD PRESSURE VISIT (result less than 140 mmHg) equals Yes, include in the Numerator Count which is represented by Letter a2 in the sample calculation listed at the end of this document. Letter a2 equals 1 patient in the sample calculation. Stop Processing.

SAMPLE CALCULATION:

Performance Rate =
$$\frac{\text{Numerator (a}^1 + \text{a}^2 = 2 \text{ patients)}}{\text{Denominator (b = 10 patients) - Denominator Exclusions (c}^1 + \text{c}^2 + \text{c}^3 = 3 \text{ patients) - Denominator Exceptions (N/A)}} = 28.57\%$$