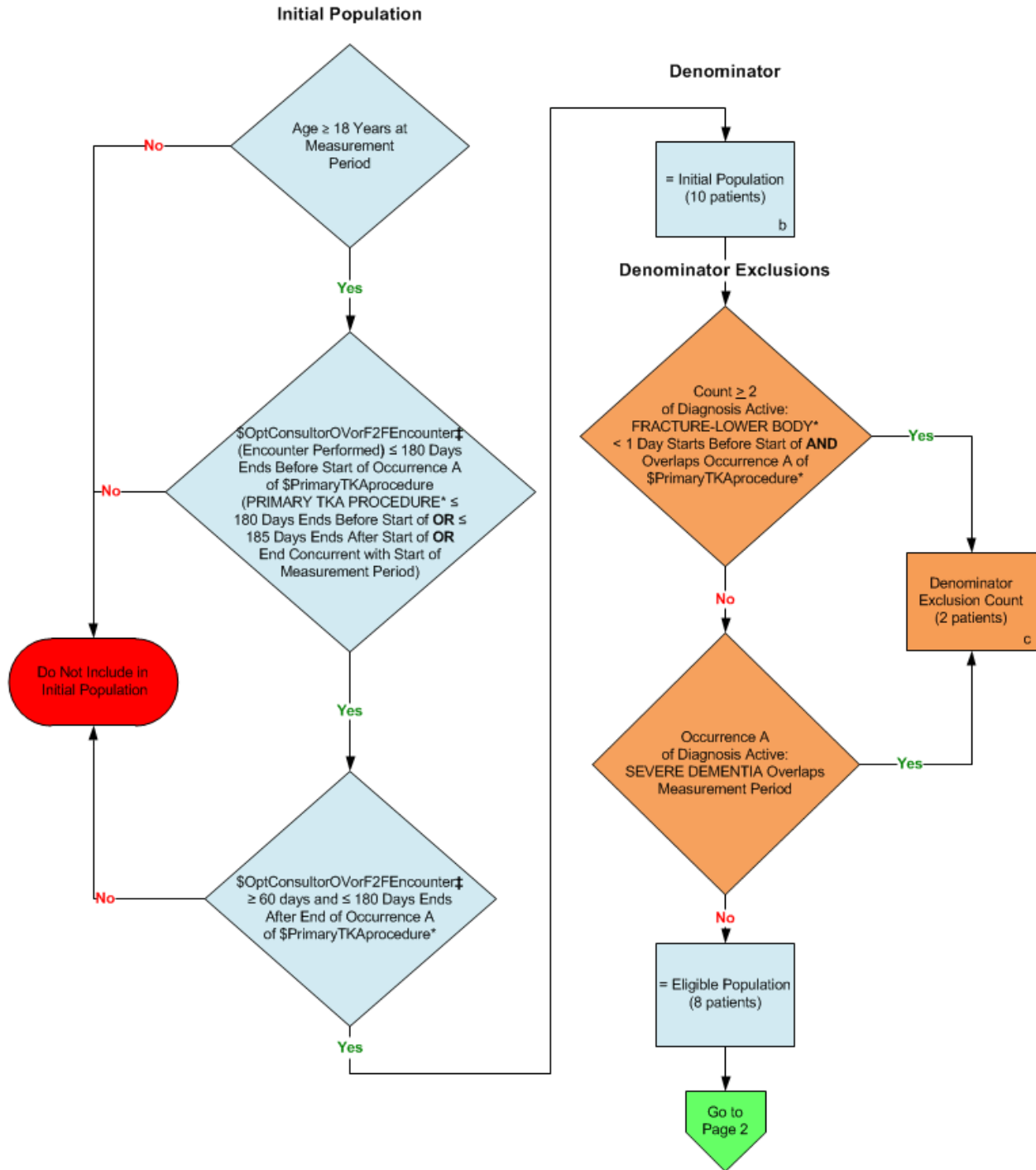
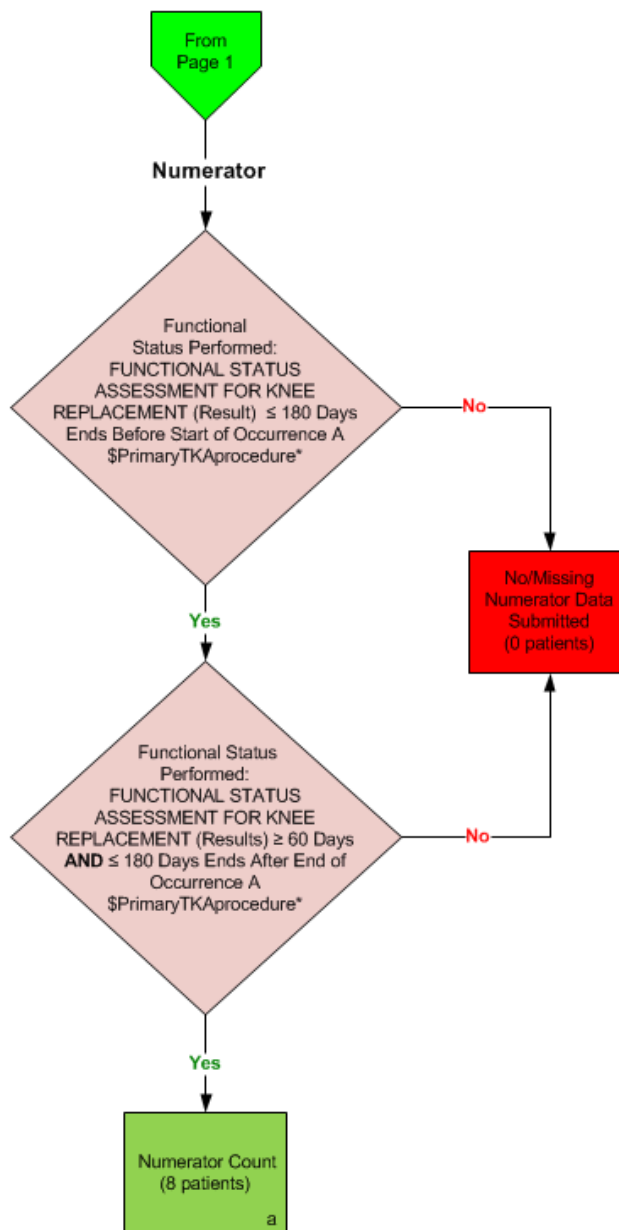


**2014 eCQM Flow**  
**Measure Identifier: CMS66v4**  
 Functional Status Assessment for Knee Replacement



\*Please refer to the specific section of the eCQM to identify the QDM data elements and associated value sets for use in reporting this eCQM.  
 ‡For a listing of appropriate encounters, please refer to the Population Criteria and associated value sets as specific data elements have not been listed.

**2014 eCQM Flow**  
**Measure Identifier: CMS66v4**  
 Functional Status Assessment for Knee Replacement



\*Please refer to the specific section of the eCQM to identify the QDM data elements and associated value sets for use in reporting this eCQM.

‡For a listing of appropriate encounters, please refer to the Population Criteria and associated value sets as specific data elements have not been listed.

**SAMPLE CALCULATION:**

**Performance Rate =**  

$$\frac{\text{Numerator (a=8 patients)}}{\text{Denominator (b=10 patients) - Denominator Exclusions (c=2 patients) - Denominator Exceptions (N/A)}} = 100.00\%$$

2014 eCQM Flows  
Measure Identifier: CMS66v4  
Functional Status Assessment for Knee Replacement

Please refer to the specific section of the eCQM to identify the Population Criteria and associated value sets for use in reporting this eCQM.

1. Start Initial Population
2. Check Age:
  - a. If the AGE is greater than or equal to 18 years of age at measurement period equals No, do not include in Initial Population. Stop Processing.
  - b. If the AGE is greater than or equal to 18 years of age at measurement period, equals Yes, continue processing and proceed to check \$OptConsultorOVorF2FEncounter: Encounter Performed.
3. Check \$OptConsultorOVorF2FEncounter: Encounter Performed:
  - a. If \$OpConsultorOVorF2FEncounter: Encounter Performed (QDM data element, OUTPATIENT CONSULTATION, or FACE-TO-FACE INTERACTION, or OFFICE VISIT, or POSTOPERATIVE VISIT) less than or equal to 180 days ends before start of Occurrence A of \$PRIMARYTKAPROCEDURE (Procedure Performed, QDM data element, PRIMARY TKA PROCEDURE, less than or equal to 180 days ends before start of OR less than or equal to 185 days ends after start of measurement period, OR ends concurrent with start of measurement period) equals Yes, include in Initial Population and continue on to Encounter Performed.
  - b. If \$OpConsultorOVorF2FEncounter: Encounter Performed (QDM data element, OUTPATIENT CONSULTATION, or FACE-TO-FACE INTERACTION, or OFFICE VISIT, or POSTOPERATIVE VISIT) less than or equal to 180 days ends before start of Occurrence A of \$PRIMARYTKAPROCEDURE (Procedure Performed, QDM data element, PRIMARY TKA PROCEDURE, less than or equal to 180 days ends before start of OR less than or equal to 185 days ends after start of measurement period, OR ends concurrent with start of measurement period) equals No, do not include in Initial Population and stop processing.
4. Check \$OptConsultorOVorF2FREncounter:
  - a. If \$OpConsultorOVorF2FEncounter (QDM data element, OUTPATIENT CONSULTATION, or FACE-TO-FACE INTERACTION, or OFFICE VISIT, or POSTOPERATIVE VISIT) greater than or equal to 60 days and less than or equal to 180 days ends after end of Occurrence A of \$PRIMARYTKAPROCEDURE (Procedure Performed, QDM data element, PRIMARY TKA PROCEDURE, less than or equal to 180 days ends before start of OR less than or equal to 185 days ends after start of measurement period, OR ends concurrent with start of measurement period), equals Yes, include in the Initial Population and proceed to Denominator.

- b. If \$OpConsultorOVorF2FEncounter (QDM data element, OUTPATIENT CONSULTATION, or FACE-TO-FACE INTERACTION, or OFFICE VISIT, or POSTOPERATIVE VISIT) greater than or equal to 60 days and less than or equal to 180 days ends after end of Occurrence A of \$PRIMARYTKAPROCEDURE (Procedure Performed, QDM data element, PRIMARY TKA PROCEDURE, less than or equal to 180 days ends before start of OR less than or equal to 185 days ends after start of measurement period, OR ends concurrent with start of measurement period), equals No, do not include in Initial Population and stop processing.
5. Start Denominator
  - a. Denominator equals the Initial Population. Denominator is represented by the Letter b in the sample calculation listed at the end of this document. Letter b equals 10 patients in the sample calculation.
6. Start Denominator Exclusions
7. Check Diagnosis Active: Count Greater than or equal to 2.
  - a. If the count greater than or equal to 2 of Diagnosis Active QDM data element, FRACTURE – LOWER BODY, less than 1 day starts before start of AND overlaps Occurrence A \$PRIMARYTKAPROCEDURE (Procedure Performed, QDM data element, PRIMARY TKA PROCEDURE, less than or equal to 180 days ends before start of OR less than or equal to 185 days ends after start of measurement period, OR ends concurrent with start of measurement period), equals Yes, include in Denominator Exclusion count. Denominator Exclusion is represented by Letter c in the sample calculation listed at the end of this document. Letter c equals 2 patients in the sample calculation.
  - b. If the count greater than or equal to 2 of Diagnosis Active QDM data element, FRACTURE – LOWER BODY, less than 1 day starts before start of AND overlaps Occurrence A \$PRIMARYTKAPROCEDURE (Procedure Performed, QDM data element, PRIMARY TKA PROCEDURE, less than or equal to 180 days ends before start of OR less than or equal to 185 days ends after start of measurement period, OR ends concurrent with start of measurement period), equals No, proceed to check Occurrence A of Diagnosis Active.
8. Check Occurrence A of Diagnosis Active:
  - a. If Occurrence A of QDM data element SEVERE DEMENTIA overlaps measurement period equals Yes, include in Denominator Exclusion count. Denominator Exclusion is represented by Letter c in the sample calculation listed at the end of this document. Letter c equals 2 patients in the sample calculation.
  - b. If Occurrence A of QDM data element SEVERE DEMENTIA overlaps measurement period equals No, proceed to Numerator.
9. Start Numerator

10. Check Functional Status Performed:

- a. If the Functional Status Performed QDM data element, FUNCTIONAL STATUS ASSESSMENT FOR KNEE REPLACEMENT (Result), less than or equal to 180 days ends before start of Occurrence A of QDM data element \$PRIMARYTKAPROCEDURE (Procedure Performed, QDM data element, PRIMARY TKA PROCEDURE, less than or equal to 180 days ends before start of OR less than or equal to 185 days ends after start of measurement period, OR ends concurrent with start of measurement period), equals Yes, proceed to next Functional Status Performed.
- b. If the Functional Status Performed QDM data element, FUNCTIONAL STATUS ASSESSMENT FOR KNEE REPLACEMENT (Result), less than or equal to 180 days ends before start of Occurrence A of QDM data element \$PRIMARYTKAPROCEDURE (Procedure Performed, QDM data element, PRIMARY TKA PROCEDURE, less than or equal to 180 days ends before start of OR less than or equal to 185 days ends after start of measurement period, OR ends concurrent with start of measurement period), equals No, include in the No/Missing Numerator Data Submitted count and stop processing.

11. Check Functional Status Performed:

- a. If the Function Status Performed QDM data element FUNCTIONAL STATUS ASSESSMENT FOR KNEE REPLACEMENT (Result) greater than or equal to 60 days AND less than or equal to 180 days ends after end of Occurrence A of QDM data element \$PRIMARYTKAPROCEDURE (Procedure Performed, QDM data element, PRIMARY TKA PROCEDURE, less than or equal to 180 days ends before start of OR less than or equal to 185 days ends after start of measurement period, OR ends concurrent with start of measurement period), equals Yes, include in Numerator count. Numerator is represented by Letter a in the sample calculation listed at the end of this document. Letter a equals 8 patients in the sample calculation.
- b. If the Functional Status Performed QDM data element FUNCTIONAL STATUS ASSESSMENT FOR KNEE REPLACEMENT (Result) greater than or equal to 60 days AND less than or equal to 180 days ends after end of Occurrence A of QDM data element \$PRIMARYTKAPROCEDURE (Procedure Performed, QDM data element, PRIMARY TKA PROCEDURE, less than or equal to 180 days ends before start of OR less than or equal to 185 days ends after start of measurement period, OR ends concurrent with start of measurement period), equals No, include in the No/Missing Numerator Data Submitted count and stop processing.

**SAMPLE CALCULATION:**

**Performance Rate =**

$$\frac{\text{Numerator (a=8 patients)}}{\text{Denominator (b=10 patients) - Denominator Exclusions (c=2 patients) - Denominator Exceptions (N/A)}} = 100.00\%$$