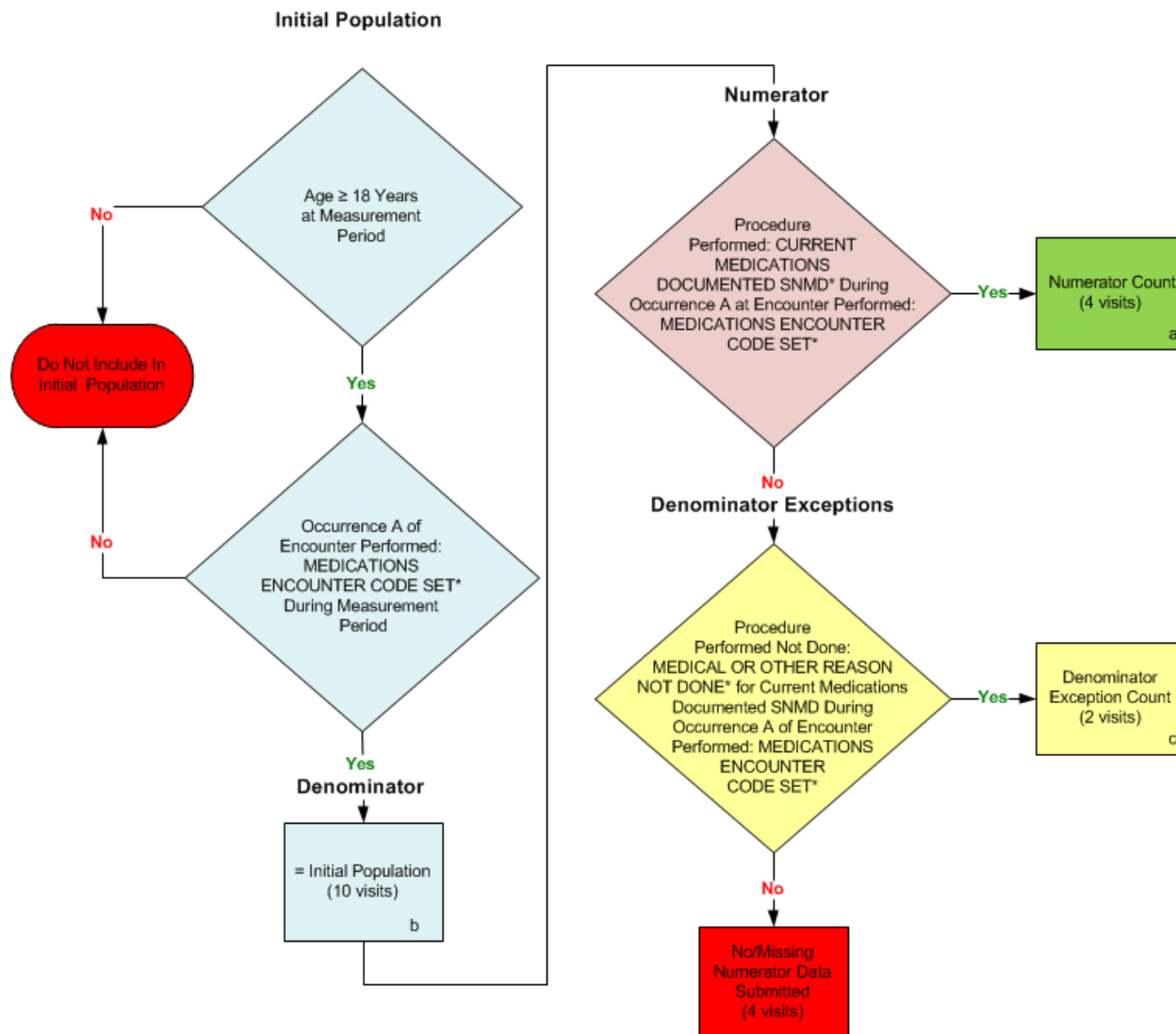


2014 eCQM Flow
Measure Identifier: CMS68v5
 NQF 0419: Documentation of Current Medications in the Medical Record



*Please refer to the specific section of the eCQM to identify the QDM data elements and associated value sets for use in reporting this eCQM.

SAMPLE CALCULATION:

Performance Rate =

$$\frac{\text{Numerator (a = 4 visits)}}{\text{Denominator (b = 10 visits) - Denominator Exclusions (N/A) - Denominator Exceptions (c=2 visits)}} = 50.00\%$$

2014 eCQM Flows
Measure Identifier: CMS68v5
NQF 0419: Documentation of Current Medications in the Medical Record

Please refer to the specific section of the eCQM to identify the Population Criteria and associated value sets for use in reporting this eCQM.

1. Start Initial Population
2. Check Age:
 - a. If the AGE is greater than or equal to 18 years at measurement period equals No, do not include in Initial Population. Stop Processing.
 - b. If the AGE is greater than or equal to 18 years at measurement period equals Yes, proceed to check Occurrence A Encounter Performed.
3. Check Occurrence A Encounter Performed:
 - a. If Occurrence A of Encounter Performed of the QDM data element, MEDICATIONS ENCOUNTER CODE SET, during measurement period equals No, do not include in the Initial Population. Stop Processing.
 - b. If Occurrence A of Encounter Performed of the QDM data element, MEDICATIONS ENCOUNTER CODE SET, during measurement period equals Yes, proceed to Start Denominator.
4. Start Denominator
 - a. Denominator equals the Initial Population. Denominator is represented by Letter b in the sample calculation listed at the end of this document. Letter b equals 10 visits in the sample calculation.
5. Start Numerator
6. Check Procedure Performed:
 - a. If the Procedure Performed QDM data element, CURRENT MEDICATIONS DOCUMENTED SNMD, during Occurrence A of Encounter Performed QDM data element, MEDICATION ENCOUNTER CODE SET equals No, do not include in the Numerator Count and proceed to Denominator Exceptions.
 - b. If the Procedure Performed QDM data element, CURRENT MEDICATIONS DOCUMENTED SNMD, during Occurrence A of Encounter Performed QDM data element, MEDICATION ENCOUNTER CODE SET equals Yes, include in the Numerator Count. Letter a equals 4 visits in the sample calculation. Stop Processing.
7. Start Denominator Exceptions
8. Check Procedure Performed Not Done:
 - a. If the Procedure Performed Not Done QDM data element, MEDICAL OR OTHER REASON NOT DONE, for Current Medications Documented SNMD during Occurrence A of Encounter Performed of the QDM data element, MEDICATION

ENCOUNTER CODE SET equals No, include in the No/Missing Data Submitted count. Stop Processing.

- b. If the Procedure Performed Not Done QDM data element, MEDICAL OR OTHER REASON NOT DONE, for Current Medications Documented SNMD during Occurrence A of Encounter Performed of the QDM data element, MEDICATION ENCOUNTER CODE SET equals Yes, include in the Denominator Exceptions Count which is represented by letter c in the sample calculation listed at the end of this document. Letter c equals 2 visits in the sample calculation. Stop Processing.

SAMPLE CALCULATION:

Performance Rate =

$$\frac{\text{Numerator (a = 4 visits)}}{\text{Denominator (b = 10 visits) – Denominator Exclusions (N/A) – Denominator Exceptions (c=2 visits)}} = 50.00\%$$