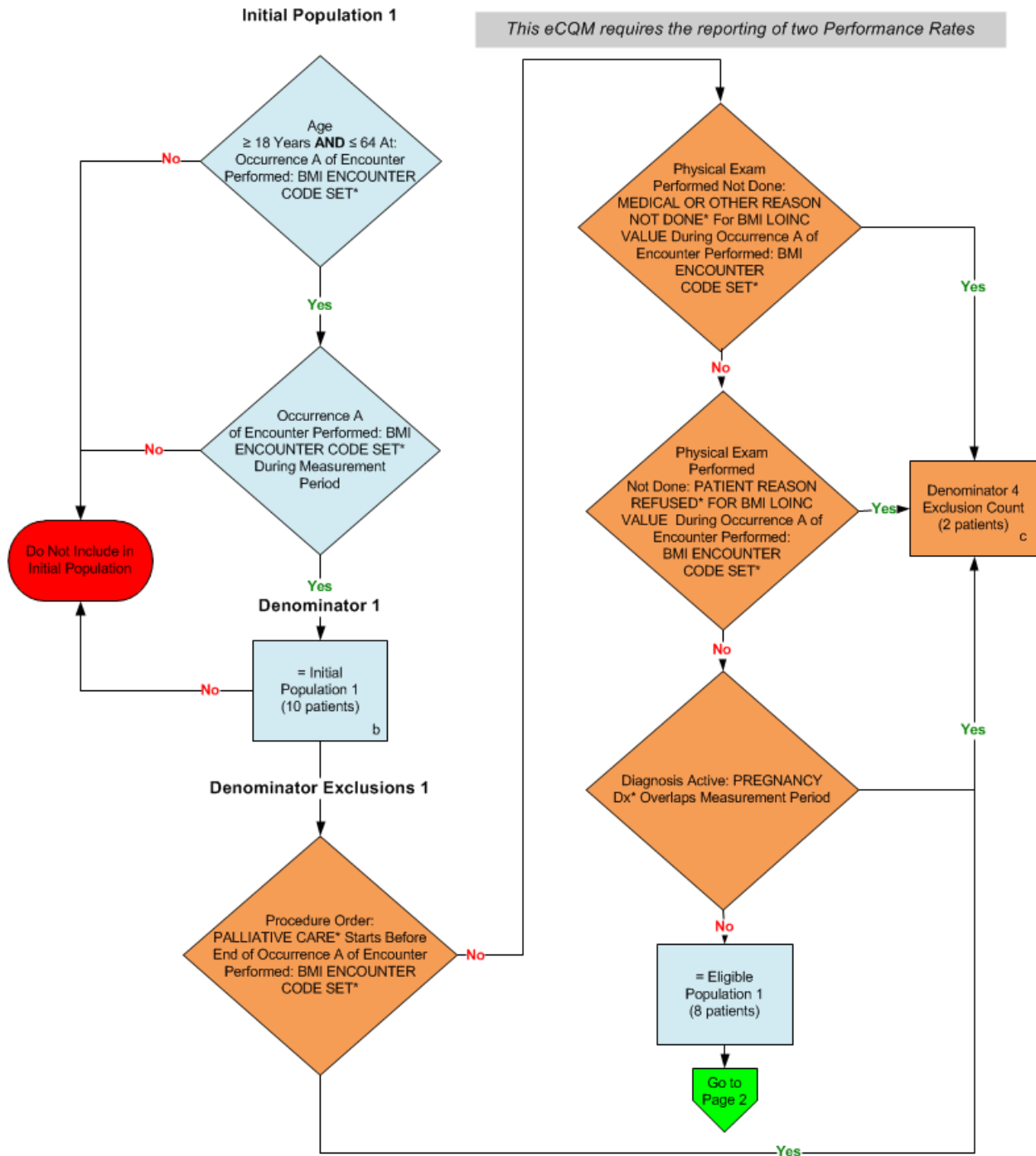


2014 ECQM Flow
Measure Identifier: CMS69v4

NQF 0421: Preventive Care And Screening: Body Mass Index (BMI) Screening And Follow-Up

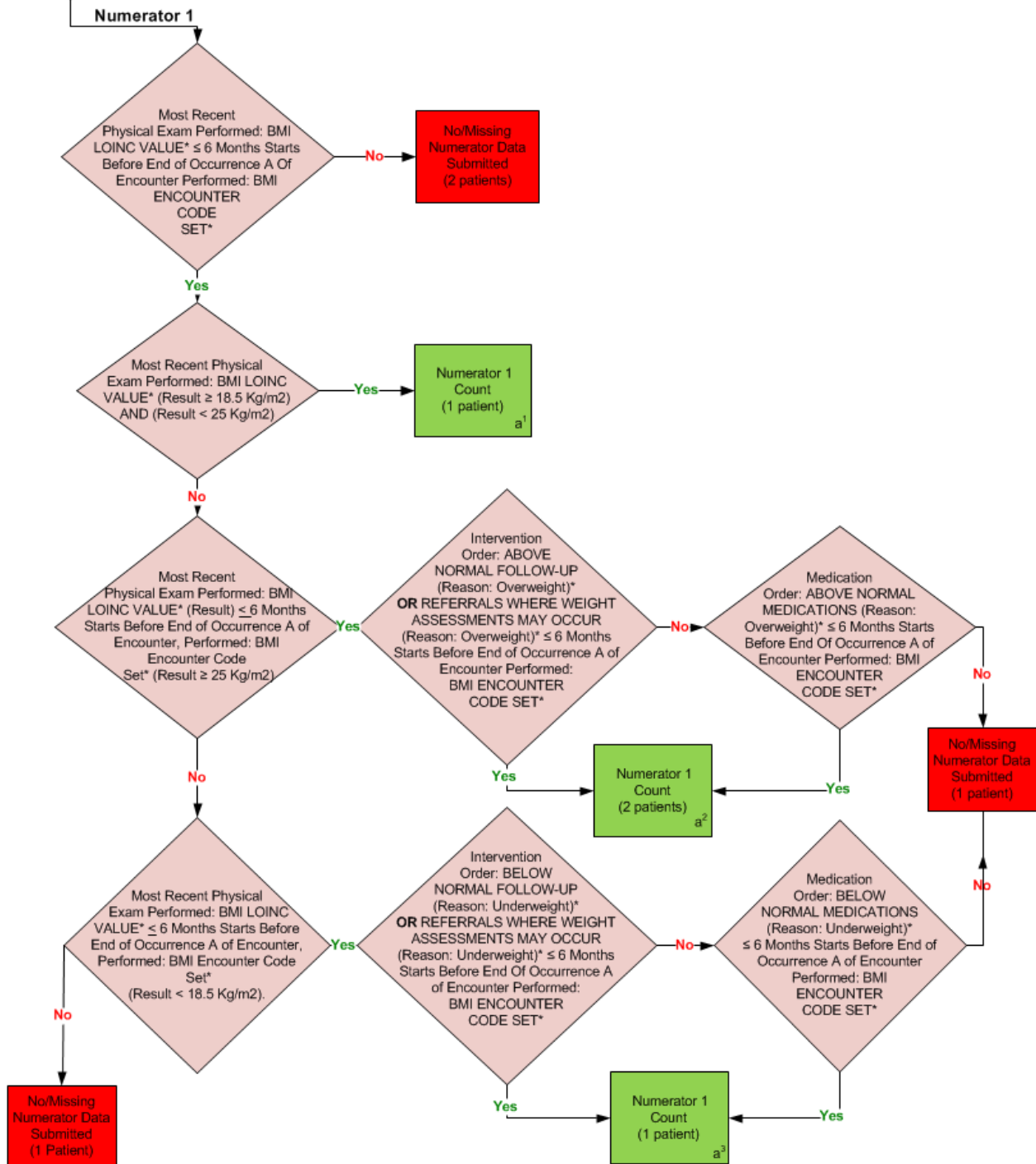


*Please refer to the specific section of the eCQM to identify the QDM data elements and associated value sets for use in reporting this eCQM.

2014 eCQM Measure Flows

Measure Identifier: CMS69v4

NQF 0421: Preventive Care and Screening: Body Mass Index (BMI) Screening and Follow-Up



*Please refer to the specific section of the eCQM to identify the QDM data elements and associated value sets for use in reporting this eCQM.

2014 eCQM Measure Flows
Measure Identifier: CMS69v4

NQF 0421: Preventive Care and Screening: Body Mass Index (BMI) Screening and Follow-Up

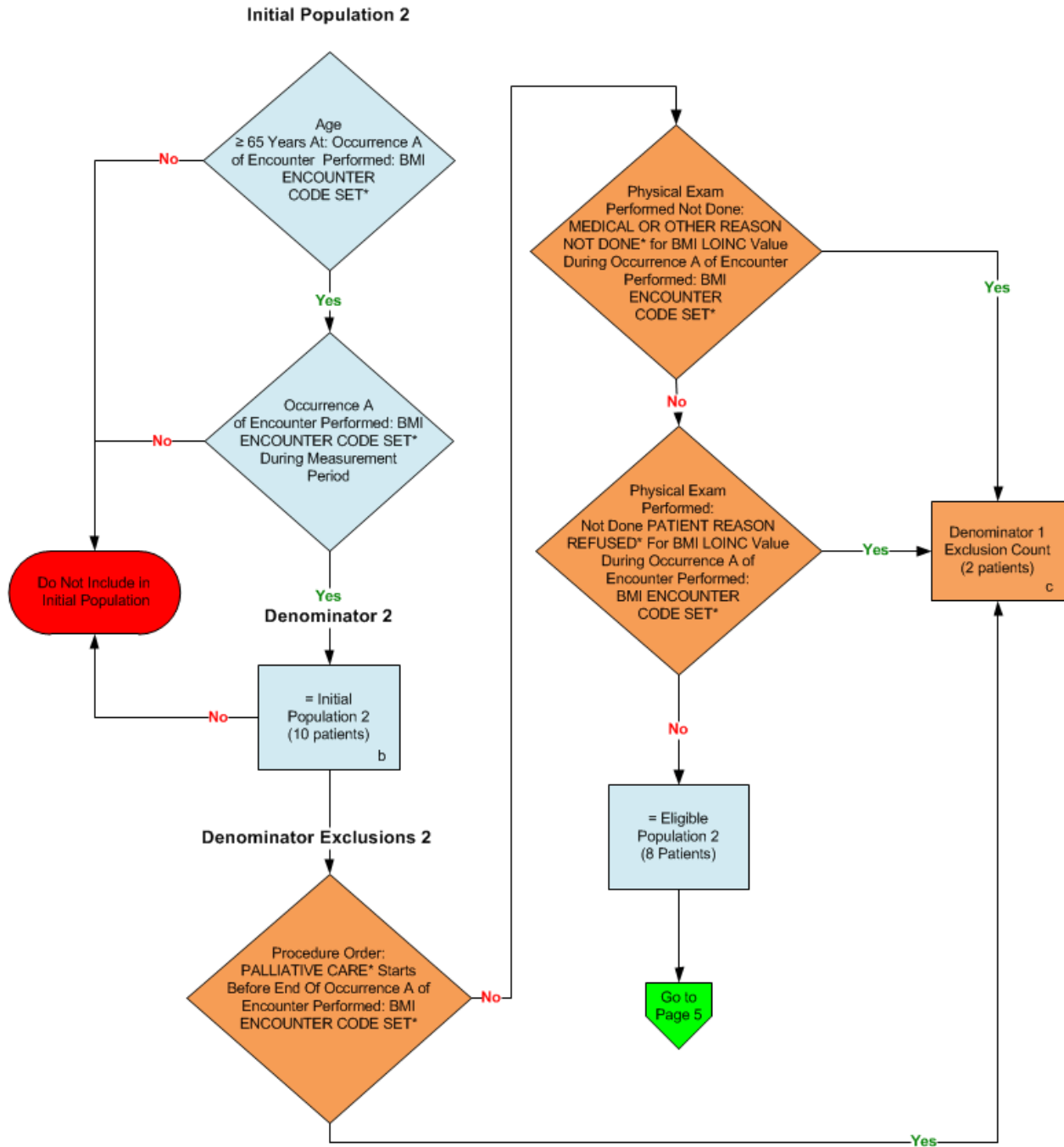
SAMPLE CALCULATION: *Combination of Initial Population 1; Denominator 1; Numerator 1*

Performance Rate =

$$\frac{\text{Numerator (a}^1\text{+a}^2\text{+a}^3\text{ = 4 patients)}}{\text{Denominator (b =10 patients) – Denominator Exclusions (c = 2 patients) – Denominator Exceptions (N/A)}} = 50.00\%$$

2014 eCQM Measure Flows
Measure Identifier: CMS69v4

NQF 0421: Preventive Care and Screening: Body Mass Index (BMI) Screening and Follow-Up

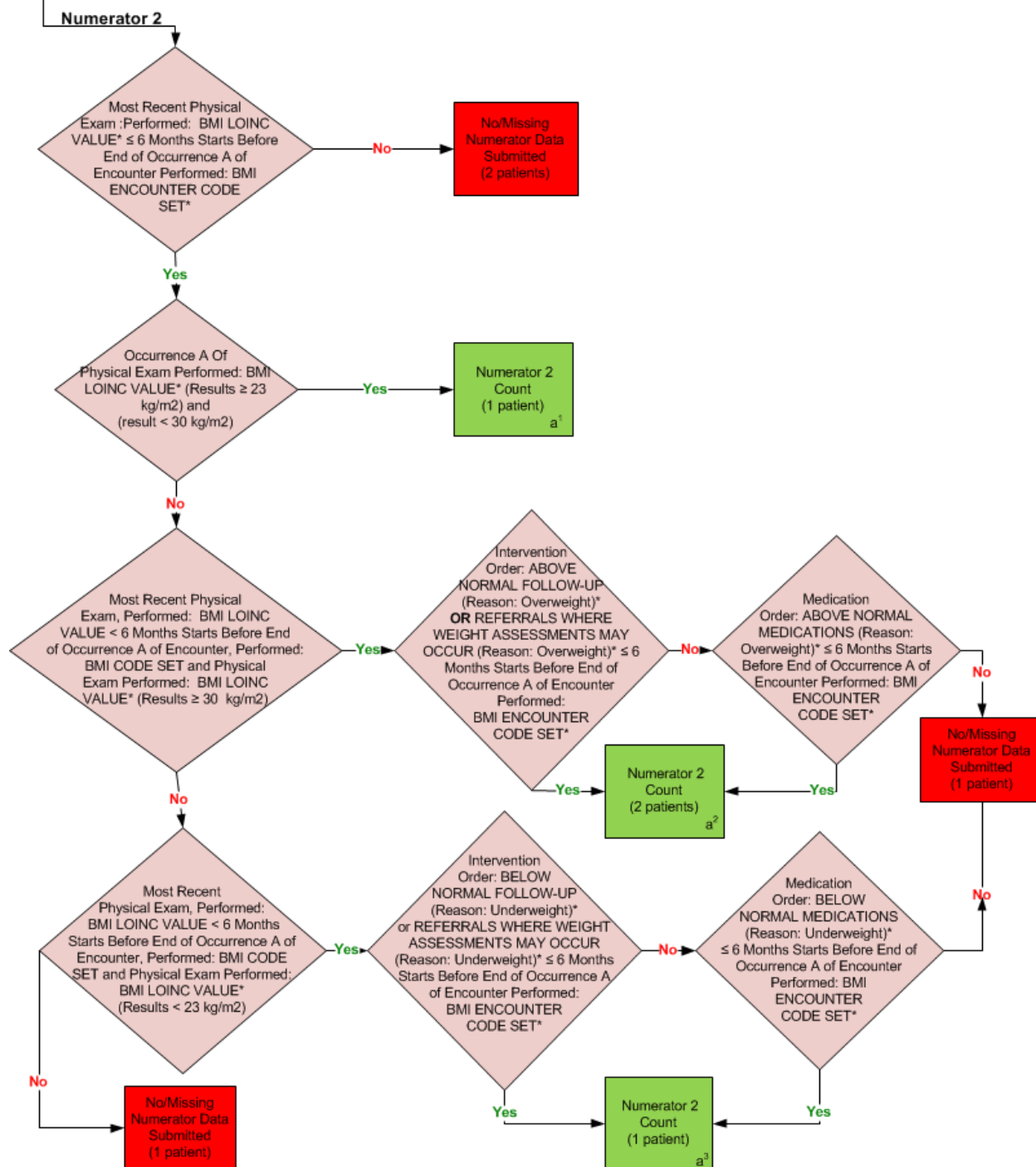


*Please refer to the specific section of the eCQM to identify the QDM data elements and associated value sets for use in reporting this eCQM.

From
Page 4

2014 eCQM Measure Flows Measure Identifier: CMS69v4

NQF 0421: Preventive Care and Screening: Body Mass Index (BMI) Screening and Follow-Up



*Please refer to the specific section of the eCQM to identify the QDM data elements and associated value sets for use in reporting this eCQM.

2014 eCQM Measure Flows
Measure Identifier: CMS69v4

NQF 0421: Preventive Care and Screening: Body Mass Index (BMI) Screening and Follow-Up

SAMPLE CALCULATION: *Combination of Initial Population 2; Denominator 2; Numerator 2*

Performance Rate =

$$\frac{\text{Numerator (a}^1\text{+a}^2\text{+a}^3\text{=4 patients)}}{\text{Denominator (b =10 patients) – Denominator Exclusions (c=2 patients) – Denominator Exceptions (N/A)}} = 50.00\%$$

2014 eCQM Flows
Measure Identifier: CMS69v4
NQF 0421: Preventive Care and Screening: Body Mass Index (BMI) Screening and
Follow-Up

This eCQM requires the reporting of two Performance Rates

Please refer to the specific section of the eCQM to identify the Population Criteria and associated value sets for use in reporting this eCQM.

1. Start Initial Population 1
2. Check Age:
 - a. If the AGE greater than or equal to 18 years and less than or equal to 64 years at Occurrence A of Encounter Performed QDM data element, BMI ENCOUNTER CODE SET equals No, do not include in Initial Population. Stop Processing.
 - b. If the AGE greater than or equal to 18 years and less than or equal to 64 years at Occurrence A of Encounter Performed QDM data element, BMI ENCOUNTER CODE SET equals Yes, proceed to check Occurrence A of Encounter Performed.
3. Check Occurrence A of Encounter Performed:
 - a. If Occurrence A of Encounter Performed QDM data element, BMI ENCOUNTER CODE SET, during measurement period equals Yes, proceed to check Procedure Order.
 - b. If Occurrence A of Encounter Performed QDM data element, BMI ENCOUNTER CODE SET, during measurement period equals No, do not include in Initial Population. Stop Processing.
4. Start Denominator 1
 - a. Denominator equals the Initial Patient Population. Denominator is represented by Letter b in the sample calculation listed at the end of Initial Population 1. Letter b equals 10 patients in the sample calculation.
5. Start Denominator Exclusions 1
6. Check Procedure Order:
 - a. If the Procedure Order QDM data element, PALLIATIVE CARE, starts before end of Occurrence A of Encounter Performed QDM data element, BMI ENCOUNTER CODE SET equals Yes, include in Denominator 1 Exclusions count. Denominator Exclusion is represented by Letter c in the sample calculation listed at the end of Initial Population 1. Letter c equals 2 patients in the sample calculation.
 - b. If the Procedure Order QDM data element, PALLIATIVE CARE, starts before end of Occurrence A of the Encounter Performed QDM data element, BMI ENCOUNTER CODE SET equals No, proceed to check Physical Exam Performed Not Done.
7. Check Physical Exam Performed Not Done:
 - a. If the Physical Exam Performed Not Done QDM data element, MEDICAL OR OTHER REASON NOT DONE, for BMI LOINC VALUE during Occurrence A of

- Encounter Performed QDM data element, BMI ENCOUNTER CODE SET equals Yes include in Denominator 1 Exclusions count. Denominator Exclusion is represented by Letter c in the sample calculation listed at the end of Initial Population 1. Letter c equals 2 patients in the sample calculation.
- b. If the Physical Exam Performed Not Done QDM data element, MEDICAL OR OTHER REASON NOT DONE, for BMI LOINC VALUE during Occurrence A of Encounter Performed QDM data element, BMI ENCOUNTER CODE SET equals No, proceed to check Physical Exam Performed Not Done.
8. Check Physical Exam Performed Not Done:
- a. If the Physical Exam Performed Not Done QDM data element, PATIENT REASON REFUSED, for BMI LOINC VALUE during Occurrence A of Encounter Performed QDM data element, BMI ENCOUNTER CODE SET equals Yes, include in Denominator 1 Exclusions count. Denominator Exclusion is represented by Letter c in the sample calculation listed at the end of Initial Population 1. Letter c equals 2 patients in the sample calculation.
 - b. If the Physical Exam Performed Not Done QDM data element, MEDICAL OR OTHER REASON NOT DONE, for BMI LOINC VALUE during Occurrence A of Encounter Performed QDM data element, BMI ENCOUNTER CODE SET equals No, proceed to check Diagnosis Active.
9. Check Diagnosis Active:
- a. If the Diagnosis Active QDM data element, PREGNANCY DX, overlaps measurement period equals Yes, include in Denominator 1 Exclusions count. Denominator Exclusion is represented by Letter c in the sample calculation listed at the end of Initial Population 1. Letter c equals 2 patients in the sample calculation.
 - b. If the Diagnosis Active QDM data element, PREGNANCY DX, overlaps measurement period equals No, proceed to Numerator 1.
10. Start Numerator 1
11. Check Most Recent Physical Exam Performed:
- a. If Most Recent Physical Exam Performed QDM data element, BMI LOINC VALUE, less than or equal to 6 months starts before end of Occurrence A of Encounter Performed QDM data element, BMI ENCOUNTER CODE SET equals Yes, proceed to check Physical Exam Performed.
 - b. If Most Recent Physical Exam Performed QDM data element, BMI LOINC VALUE, less than or equal to 6 months starts before end of Occurrence A of Encounter Performed QDM data element, BMI ENCOUNTER CODE SET equals No, include in the No/Missing Data Submitted count. Stop Processing. Continue on to Initial Population 2.
12. Check Most Recent Physical Exam Performed:
- a. If Most Recent Physical Exam Performed QDM data element, BMI LOINC VALUE, (result greater than or equal to 18.5 kg/m²) and (result less than 25 kg/m²) equals Yes, include in Numerator 1 Count. Numerator is represented by Letter a¹ in the

- sample calculation listed at the end of Initial Population 1. Letter a¹ equals 1 patient in the sample calculation. Continue on to Initial Population 2.
- b. If Most Recent Physical Exam Performed QDM data element, BMI LOINC VALUE, (result greater than or equal to 18.5 kg/m²) and (result less than 25 kg/m²) equals No, proceed to check Most Recent Physical Exam Performed.
13. Check Most Recent Physical Exam Performed:
- a. If Most Recent Physical Exam Performed QDM data element, BMI LOINC VALUE, (result) less than or equal to 6 months starts before end of Occurrence A of Encounter Performed QDM data element, BMI ENCOUNTER CODE SET (result greater than or equal to 25 kg/m²) equals Yes, proceed to check Intervention Order.
 - b. If Most Recent Physical Exam Performed QDM data element, BMI LOINC VALUE, (result) less than or equal to 6 months starts before end of Occurrence A of Encounter Performed QDM data element, BMI ENCOUNTER CODE SET (result greater than or equal to 25 kg/m²) equals No, proceed to check Most Recent Physical Exam Performed.
14. Check Intervention Order:
- a. If the Intervention Order QDM data element, ABOVE NORMAL FOLLOW-UP (reason: Overweight), or REFERRALS WHERE WEIGHT ASSESSMENT MAY OCCUR (reason: Overweight), less than or equal to 6 months starts before end of Occurrence A of Encounter Performed QDM data element, BMI ENCOUNTER CODE SET equals Yes, include in Numerator 1 Count. Numerator is represented by Letter a² in the sample calculation listed at the end of Initial Patient Population 1. Letter a² equals 2 patients in the sample calculation. Continue on to Initial Population 2.
 - b. If the Intervention Order QDM data element, ABOVE NORMAL FOLLOW-UP (reason: Overweight), or REFERRALS WHERE WEIGHT ASSESSMENT MAY OCCUR (reason: Overweight), less than or equal to 6 months starts before end of Occurrence A of Encounter Performed QDM data element, BMI ENCOUNTER CODE SET equals No, proceed to check Medication Order.
15. Check Medication Order:
- a. If the Medication Order QDM data element, ABOVE NORMAL MEDICATIONS (reason: Overweight), less than or equal to 6 months starts before end of Occurrence A of Encounter Performed QDM data element, BMI ENCOUNTER CODE SET equals Yes, include in Numerator 1 Count. Numerator is represented by Letter a² in the sample calculation listed at the end of Initial Population 1. Letter a² equals 2 patients in the sample calculation. Continue on to Initial Population 2.
 - b. If the Medication Order QDM data element, ABOVE NORMAL MEDICATIONS (reason: Overweight), less than or equal to 6 months starts before end of Occurrence A of Encounter Performed QDM data element, BMI ENCOUNTER CODE SET equals No, include in the No/Missing Data Submitted count. Stop Processing. Continue on to Initial Population 2.

16. Check Most Recent Physical Exam Performed:

- a. If Most Recent Physical Exam Performed QDM data element, BMI LOINC VALUE, less than or equal to 6 months starts before end of Occurrence A of Encounter Performed QDM data element, BMI ENCOUNTER CODE SET (result less than or equal to 18.5 kg/m2) equals Yes, proceed to check Intervention Order.
- b. If Most Recent Physical Exam Performed QDM data element, BMI LOINC VALUE, less than or equal to 6 months starts before end of Occurrence A of Encounter Performed QDM data element, BMI ENCOUNTER CODE SET (result less than or equal to 18.5 kg/m2) equals No, include in the No/Missing Data Submitted count. Stop Processing. Continue on to Initial Population 2.

17. Check Intervention Order:

- a. If the Intervention Order QDM data element, BELOW NORMAL FOLLOW-UP (reason: Underweight), or REFERRALS WHERE WEIGHT ASSESSMENT MAY OCCUR (reason: Underweight), less than or equal to 6 months starts before end of Occurrence A of Encounter Performed QDM data element, BMI ENCOUNTER CODE SET equals Yes, include in Numerator 1 Count. Numerator is represented by Letter a^3 in the sample calculation listed at the end of Initial Population 1. Letter a^3 equals 1 patient in the sample calculation. Continue on to Initial Population 2.
- b. If the Intervention Order QDM data element, BELOW NORMAL FOLLOW-UP (reason: Underweight), or REFERRALS WHERE WEIGHT ASSESSMENT MAY OCCUR (reason: Underweight), less than or equal to 6 months starts before end of Occurrence A of Encounter Performed QDM data element, BMI ENCOUNTER CODE SET equals No, proceed to check Medication Order.

18. Check Medication Order:

- a. If the Medication Order QDM data element, BELOW NORMAL MEDICATIONS (reason: Underweight), less than or equal to 6 months starts before end of Occurrence A of Encounter Performed QDM data element, BMI ENCOUNTER CODE SET equals Yes, include in Numerator 1 Count. Numerator is represented by Letter a^3 in the sample calculation listed at the end of Initial Population 1. Letter a^3 equals 1 patient in the sample calculation. Continue on to Initial Population 2.
- b. If the Medication Order QDM data element, BELOW NORMAL MEDICATIONS (reason: Underweight), less than or equal to 6 months starts before end of Occurrence A of Encounter Performed QDM data element, BMI ENCOUNTER CODE SET equals No, include in the No/Missing Data Submitted count. Stop Processing. Continue on to Initial Population 2.

SAMPLE CALCULATION: *Combination of Initial Population 1; Denominator 1; Numerator 1*

Performance Rate =

$$\frac{\text{Numerator } (a^1 + a^2 + a^3 = 4 \text{ patients})}{\text{Denominator } (b = 10 \text{ patients}) - \text{Denominator Exclusions } (c = 2 \text{ patients}) - \text{Denominator Exceptions } (N/A)} = 50.00\%$$

1. Start Initial Population 2
2. Check Age:
 - a. If the AGE is greater than or equal to 65 years at Occurrence A of Encounter Performed QDM data element, BMI ENCOUNTER CODE SET equals No, do not include in Initial Population. Stop Processing.
 - b. If the AGE is greater than or equal to 65 years at Occurrence A of Encounter Performed QDM data element, BMI ENCOUNTER CODE SET equals Yes, proceed to check Occurrence A Encounter Performed.
3. Check Occurrence A Encounter Performed:
 - a. If Occurrence A Encounter Performed QDM data element, BMI ENCOUNTER CODE SET, during measurement period equals Yes, proceed to check Procedure Order.
 - b. If Occurrence A of the QDM data element, BMI ENCOUNTER CODE SET, during measurement period equals NO, do not include in Initial Population. Stop Processing.
4. Start Denominator 2
 - a. Denominator equals the Initial Patient Population. Denominator is represented by Letter b in the sample calculation listed at the end of Initial Population 2. Letter b equals 10 patients in the sample calculation.
5. Start Denominator Exclusions 2
6. Check Procedure Order:
 - a. If the Procedure Order QDM data element, PALLIATIVE CARE, starts before end of Occurrence A of Encounter Performed QDM data element, BMI ENCOUNTER CODE SET equals Yes, include in Denominator 2 Exclusions count. Denominator Exclusions is represented by Letter c in the sample calculation listed at the end of Initial Population 2. Letter c equals 2 patients in the sample calculation.
 - b. If the Procedure Order QDM data element, PALLIATIVE CARE, starts before end of Occurrence A of the Encounter Performed QDM data element, BMI ENCOUNTER CODE SET equals No, proceed to check Physical Exam Performed Not Done.
7. Check Physical Exam Performed Not Done:
 - a. If the Physical Exam Performed Not Done QDM data element, MEDICAL OR OTHER REASON NOT DONE, for BMI LOINC VALUE during Occurrence A of Encounter Performed QDM data element, BMI ENCOUNTER CODE SET equals Yes include in Denominator 2 Exclusions count. Denominator Exclusion is represented by Letter c in the sample calculation listed at the end of Initial Population 2. Letter c equals 2 patients in the sample calculation.
 - b. If the Physical Exam Performed Not Done QDM data element, MEDICAL OR OTHER REASON NOT DONE, for BMI LOINC VALUE during Occurrence A of Encounter Performed QDM data element, BMI ENCOUNTER CODE SET equals No, proceed to check Physical Exam Performed Not Done.

8. Check Physical Exam Performed Not Done:
 - a. If the Physical Exam Performed Not Done QDM data element, PATIENT REASON REFUSED, for BMI LOINC VALUE during Occurrence A of Encounter Performed QDM data element, BMI ENCOUNTER CODE SET equals Yes, include in Denominator 2 Exclusions count. Denominator Exclusion is represented by Letter c in the sample calculation listed at the end of Initial Population 2. Letter c equals 2 patients in the sample calculation.
 - b. If the Physical Exam Performed Not Done QDM data element, PATIENT REASON REFUSED, for BMI LOINC VALUE during Occurrence A of Encounter Performed QDM data element, BMI ENCOUNTER CODE SET equals No, go to Numerator 2.
9. Start Numerator 2
10. Check Most Recent Physical Exam Performed:
 - a. If Most Recent Physical Exam Performed QDM data element, BMI LOINC VALUE, less than or equal to 6 months starts before end of Occurrence A of Encounter Performed QDM data element, BMI ENCOUNTER CODE SET equals Yes, proceed to check Occurrence A Physical Exam Performed.
 - b. If Most Recent Physical Exam Performed QDM data element, BMI LOINC VALUE, less than or equal to 6 months starts before end of Occurrence A of Encounter Performed QDM data element, BMI ENCOUNTER CODE SET equals No, include in the No/Missing Data Submitted count. Stop Processing.
11. Check Occurrence A Physical Exam Performed:
 - a. If Occurrence A of Physical Exam Performed QDM data element, BMI LOINC VALUE, (result greater than or equal to 23 kg/m²) and (result less than 30 kg/m²) equals Yes, include in Numerator 2 Count. Numerator is represented by Letter a¹ in the sample calculation listed at the end of Initial Population 2. Letter a¹ equals 1 patient in the sample calculation.
 - b. If Occurrence A of Physical Exam Performed QDM data element, BMI LOINC VALUE, (result greater than or equal to 23 kg/m²) and (result less than 30 kg/m²) equals No, proceed to Most Recent Physical Exam Performed.
12. Check Most Recent Physical Exam Performed:
 - a. If Most Recent Physical Exam Performed QDM data element, BMI LOINC VALUE, less than 6 months starts before end of Occurrence A of Encounter Performed QDM data element, BMI CODE SET and Physical Exam Performed QDM data element, BMI LOINC VALUE, (result greater than or equal to 30 kg/m²) equals Yes, proceed to check Intervention Order.
 - b. If Most Recent Physical Exam Performed QDM data element, BMI LOINC VALUE, less than 6 months starts before end of Occurrence A of Encounter Performed QDM data element, BMI CODE SET and Physical Exam Performed QDM data element, BMI LOINC VALUE, (result greater than or equal to 30 kg/m²) equals No, proceed to check Most Recent Physical Exam Performed.

13. Check Intervention Order:

- a. If the Intervention Order QDM data element, ABOVE NORMAL FOLLOW-UP (reason: Overweight), or REFERRALS WHERE WEIGHT ASSESSMENT MAY OCCUR (reason: Overweight), less than or equal to 6 months starts before end of Occurrence A of Encounter Performed QDM data element, BMI ENCOUNTER CODE SET equals Yes, include in Numerator 2 Count. Numerator is represented by Letter a² in the sample calculation listed at the end of Initial Population 2. Letter a² equals 2 patients in the sample calculation.
- b. If the Intervention Order QDM data element, ABOVE NORMAL FOLLOW-UP (reason: Overweight), or REFERRALS WHERE WEIGHT ASSESSMENT MAY OCCUR (reason: Overweight), less than or equal to 6 months starts before end of Occurrence A of Encounter Performed QDM data element, BMI ENCOUNTER CODE SET equals No, proceed to check Medication Order.

14. Check Medication Order:

- a. If the Medication Order QDM data element, ABOVE NORMAL MEDICATIONS (reason: Overweight), less than or equal to 6 months starts before end of Occurrence A of Encounter Performed QDM data element, BMI ENCOUNTER CODE SET equals Yes, include in Numerator 2 Count. Numerator is represented by Letter a² in the sample calculation listed at the end of Initial Population 2. Letter a² equals 2 patients in the sample calculation.
- b. If the Medication Order QDM data element, ABOVE NORMAL MEDICATIONS (reason: Overweight), less than or equal to 6 months starts before end of Occurrence A of Encounter Performed QDM data element, BMI ENCOUNTER CODE SET equals No, include in the No/Missing Data Submitted count. Stop Processing.

15. Check Most Recent Physical Exam Performed:

- a. If Most Recent Physical Exam Performed QDM data element, BMI LOINC VALUE, less than 6 months starts before end of Occurrence A of Encounter Performed QDM data element, BMI CODE SET and Physical Exam QDM data element, BMI LOINC VALUE, (result less than or equal to 23 kg/m²) equals Yes, proceed to check Intervention Order.
- b. If Most Recent Physical Exam Performed QDM data element, BMI LOINC VALUE, less than 6 months starts before end of Occurrence A of Encounter Performed QDM data element, BMI CODE SET and Physical Exam QDM data element, BMI LOINC VALUE, (result less than or equal to 23 kg/m²) equals No, include in the No/Missing Data Submitted count. Stop Processing.

16. Check Intervention Order:

- a. If the Intervention Order QDM data element, BELOW NORMAL FOLLOW-UP (reason: Underweight), or REFERRALS WHERE WEIGHT ASSESSMENT MAY OCCUR (reason: Underweight), less than or equal to 6 months starts before end of Occurrence A of Encounter Performed QDM data element, BMI ENCOUNTER CODE SET equals Yes, include in Numerator 2 Count. Numerator is represented by Letter a³ in the sample calculation listed at the end of Initial Population 2. Letter a³ equals 1 patient in the sample calculation.

- b. If the Intervention Order QDM data element, BELOW NORMAL FOLLOW-UP (reason: Underweight), or REFERRALS WHERE WEIGHT ASSESSMENT MAY OCCUR (reason: Underweight), less than or equal to 6 months starts before end of Occurrence A of Encounter Performed QDM data element, BMI ENCOUNTER CODE SET equals No, proceed to check Medication Order.

17. Check Medication Order:

- a. If the Medication Order QDM data element, BELOW NORMAL MEDICATIONS (reason: Underweight), less than or equal to 6 months starts before end of Occurrence A of Encounter Performed QDM data element, BMI ENCOUNTER CODE SET equals Yes, include in Numerator 2 Count. Numerator is represented by Letter a³ in the sample calculation listed at the end of Initial Population 2. Letter a³ equals 1 patient in the sample calculation.
- b. If the Medication Order QDM data element, BELOW NORMAL MEDICATIONS (reason: Underweight), less than or equal to 6 months starts before or during Occurrence A of Encounter Performed QDM data element, BMI ENCOUNTER CODE SET equals No, include in the No/Missing Data Submitted count. Stop Processing.

SAMPLE CALCULATION: *Combination of Initial Population 2; Denominator 2; Numerator 2*

Performance Rate =

$$\frac{\text{Numerator (a}^1 + \text{a}^2 + \text{a}^3 = 4 \text{ patients)}}{\text{Denominator (b = 10 patients) - Denominator Exclusions (c = 2 patients) - Denominator Exceptions (N/A)}} = 50.00\%$$