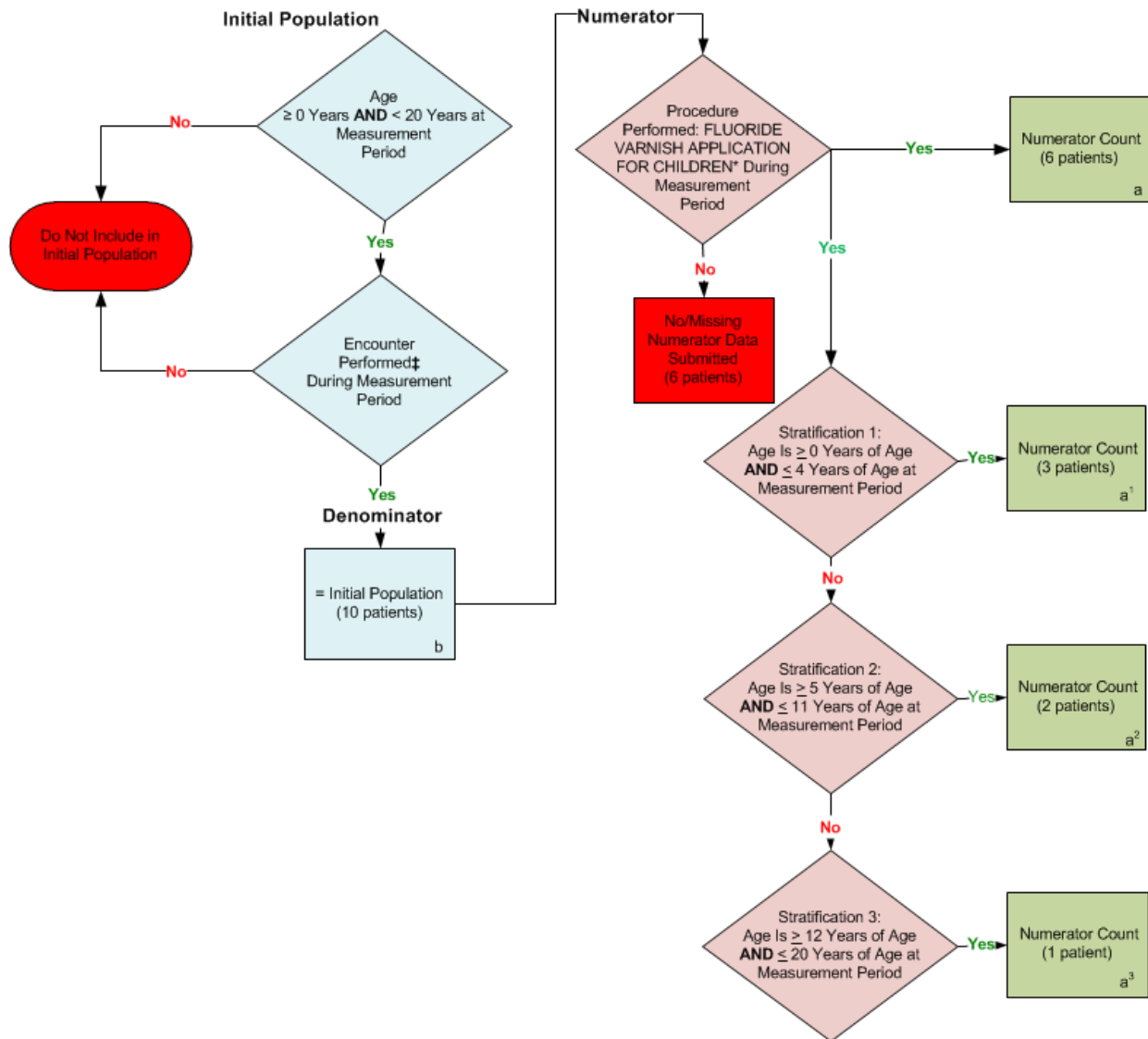


**2014 eCQM Flow**  
**Measure Identifier: CMS74v5**

Primary Caries Prevention Intervention as Offered by Primary Care Providers, Including Dentists



\*Please refer to the specific section of the eCQM to identify the QDM data elements and associated value sets for use in reporting this eCQM.

‡ For a listing of appropriate encounters, please refer to the Population Criteria and associated value sets as specific data elements have not been listed.

**SAMPLE CALCULATION with Stratification**

<b>Performance Rate =</b>	
Numerator (a=6 patients)	= 60.00%
Denominator (b=10 patients) – Denominator Exclusions (N/A) – Denominator Exceptions (N/A)	
<b>Stratification 1 =</b>	
Numerator (a¹=3 patients)	= 30.00%
Denominator (b=10 patients) – Denominator Exclusions (N/A) – Denominator Exceptions (N/A)	
<b>Stratification 2 =</b>	
Numerator (a²=2 patients)	= 20.00%
Denominator (b=10 patients) – Denominator Exclusions (N/A) – Denominator Exceptions (N/A)	
<b>Stratification 3 =</b>	
Numerator (a³=1 patient)	= 10.00%
Denominator (b=10 patients) – Denominator Exclusions (N/A) – Denominator Exceptions (N/A)	

2014 eCQM Flows  
Measure Identifier: CMS74v5

Primary Caries Prevention Intervention as Offered by Primary Care Providers, Including  
Dentists

Please refer to the specific section of the eCQM to identify the Population Criteria and associated value sets for use in reporting this eCQM.

1. Start Initial Population
2. Check Age:
  - a. If the AGE is greater than or equal to 0 years of age AND less than 20 years of age at measurement period equals No, do not include in Initial Population and stop processing.
  - b. If the AGE is greater than or equal to 0 years of age AND less than 20 years of age at measurement period equals Yes, continue processing and proceed to check Encounter Performed.
3. Check Encounter Performed:
  - a. If the Encounter Performed QDM data element, FACE-TO-FACE INTERACTION during measurement period equals No, proceed to check next Encounter Performed.
  - b. If the Encounter Performed QDM data element, FACE-TO-FACE INTERACTION during measurement period equals Yes, include in the Initial Population and proceed to Denominator.
  - c. If the Encounter Performed QDM data element, PREVENTIVE CARE – ESTABLISHED OFFICE VISIT, 0 TO 17 during measurement period equals No, proceed to check next Encounter Performed.
  - d. If the Encounter Performed QDM data element, PREVENTIVE CARE – ESTABLISHED OFFICE VISIT, 0 TO 17 during measurement period equals Yes, include in the Initial Population and proceed to Denominator.
  - e. If the Encounter Performed QDM data element, PREVENTIVE CARE - INITIAL OFFICE VISIT, 0 TO 17 during measurement period equals No, proceed to check next Encounter Performed.
  - f. If the Encounter Performed QDM data element, PREVENTIVE CARE - INITIAL OFFICE VISIT, 0 TO 17 during measurement period equals Yes, include in the Initial Population and proceed to Denominator.
  - g. If the Encounter Performed QDM data element, PREVENTIVE CARE SERVICES – ESTABLISHED OFFICE VISIT, 18 AND UP during measurement period equals No, proceed to check next Encounter Performed.
  - h. If the Encounter Performed QDM data element, PREVENTIVE CARE SERVICES – ESTABLISHED OFFICE VISIT, 18 AND UP during measurement period equals Yes, include in the Initial Population and proceed to Denominator.

- i. If the Encounter Performed QDM data element, PREVENTIVE CARE SERVICES – INITIAL OFFICE VISIT, 18 AND UP during measurement period equals No, proceed to check next Encounter Performed.
  - j. If the Encounter Performed QDM data element, PREVENTIVE CARE SERVICES – INITIAL OFFICE VISIT, 18 AND UP during measurement period equals Yes, include in the Initial Population and proceed to Denominator.
  - k. If the Encounter Performed QDM data element, OFFICE VISIT, during measurement period equals No, proceed to check next Encounter Performed.
  - l. If the Encounter Performed QDM data element, OFFICE VISIT, during measurement period equals Yes, include in the Initial Population and proceed to Denominator.
  - m. If the Encounter Performed QDM data element, CLINICAL ORAL EVALUATION during measurement period equals No, do not include in Initial Population and stop processing.
  - n. If the Encounter Performed QDM data element, CLINICAL ORAL EVALUATION during measurement period equals Yes, include in the Initial Population and proceed to Denominator.
4. Start Denominator
- a. Denominator equals the Initial Patient Population. Denominator is represented by the Letter b in the sample calculation listed at the end of this document. Letter b equals 10 patients in the sample calculation.
5. Start Numerator
6. Check Procedure Performed:
- a. If the Procedure Performed QDM data element FLUORIDE VARNISH APPLICATION FOR CHILDREN during measurement period equals Yes, include in Numerator count. Numerator is represented by the Letter a in the sample calculation listed at the end of this document. Letter a equals 6 patients in the sample calculation.
  - b. If the Procedure Performed QDM data element FLUORIDE VARNISH APPLICATION FOR CHILDREN during measurement period equals No, include in No/Missing Numerator Data Submitted count and stop processing.
7. Stratification 1
- a. If the AGE is greater than or equal to 0 and less than or equal to 4 years of age at measurement period equals Yes, include in Numerator Count. Numerator represented by letter a<sup>1</sup> in the sample calculation listed at the end of this document. Letter a<sup>1</sup> equals 3 patients in the sample calculation.
  - b. If the AGE is greater than or equal to 0 and less than or equal to 4 years of age at measurement period equals No, proceed to check Stratification 2.
8. Stratification 2
- a. If the AGE is greater than or equal to 5 and less than or equal to 11 years of age at measurement period equals Yes, include in Numerator Count. Numerator

represented by letter  $a^2$  in the sample calculation listed at the end of this document.  
Letter  $a^2$  equals 2 patients in the sample calculation.

- b. If the AGE is greater than or equal to 5 and less than or equal to 11 years of age at measurement period equals No, proceed to check next stratification

#### 9. Stratification 3

- a. If the AGE is greater than or equal to 12 and less than or equal to 20 years of age at measurement period equals Yes, include in Numerator Count. Numerator represented by letter  $a^3$  in the sample calculation listed at the end of this document. Letter  $a^3$  equals 1 patient in the sample calculation.
- b. If the AGE is greater than or equal to 12 and less than or equal to 20 years of age at measurement period equals No, Stop Processing.

SAMPLE CALCULATION with Stratification		
<b>Performance Rate =</b>		
Numerator ( $a=6$ patients)		= 60.00%
Denominator ( $b=10$ patients) – Denominator Exclusions (N/A) – Denominator Exceptions (N/A)		
<b>Stratification 1 =</b>		
Numerator ( $a^1=3$ patients)		= 30.00%
Denominator ( $b=10$ patients) – Denominator Exclusions (N/A) – Denominator Exceptions (N/A)		
<b>Stratification 2 =</b>		
Numerator ( $a^2=2$ patients)		= 20.00%
Denominator ( $b=10$ patients) – Denominator Exclusions (N/A) – Denominator Exceptions (N/A)		
<b>Stratification 3 =</b>		
Numerator ( $a^3=1$ patient)		= 10.00%
Denominator ( $b=10$ patients) – Denominator Exclusions (N/A) – Denominator Exceptions (N/A)		