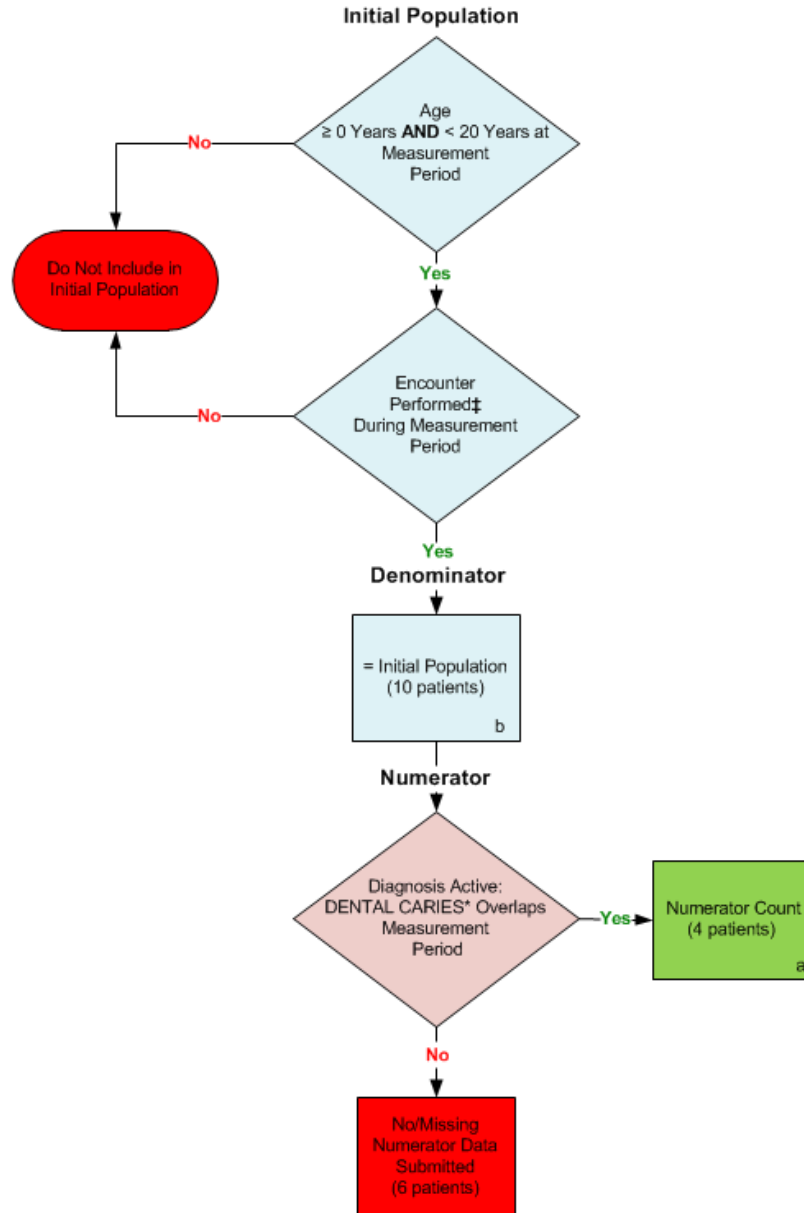


2014 eCQM Flow
Measure Identifier: CMS75v4

Children Who Have Dental Decay or Cavities



*Please refer to the specific section of the eCQM to identify the QDM data elements and associated value sets for use in reporting this eCQM.

‡ For a listing of appropriate encounters, please refer to the Population Criteria and associated value sets as specific data elements have not been listed.

SAMPLE CALCULATION:

Performance Rate =**

$$\frac{\text{Numerator (a=4 patients)}}{\text{Denominator (b=10 patients) - Denominator Exclusions (N/A) - Denominator Exceptions (N/A)}} = 40.00\%$$

** For performance, a lower rate indicates better performance.

2014 eCQM Flows
Measure Identifier: CMS75v4
Children Who Have Dental Decay or Cavities

Please refer to the specific section of the eCQM to identify the Population Criteria and associated value sets for use in reporting this eCQM.

1. Start Initial Population
2. Check Age:
 - a. If the AGE is greater than or equal to 0 years of age AND less than 20 years of age at measurement period equals No, do not include in Initial Population and Stop Processing.
 - b. If the AGE is greater than or equal to 0 years of age AND less than 20 years of age at measurement period, equals Yes continue processing and proceed to check Encounter Performed.
3. Check Encounter Performed:
 - a. If the Encounter Performed QDM data element, FACE-TO-FACE INTERACTION during measurement period equals Yes, include in the Initial Population and proceed to Denominator.
 - b. If the Encounter Performed QDM data element, FACE-TO-FACE INTERACTION during measurement period equals No, proceed to check next Encounter Performed.
 - c. If the Encounter Performed QDM data element, PREVENTIVE CARE – ESTABLISHED OFFICE VISIT, 0 TO 17, during measurement period equals Yes, include in the Initial Population and proceed to Denominator.
 - d. If the Encounter Performed QDM data element, PREVENTIVE CARE – ESTABLISHED OFFICE VISIT, 0 TO 17, during measurement period equals No, proceed to check next Encounter Performed.
 - e. If the Encounter Performed QDM data element, PREVENTIVE CARE - INITIAL OFFICE VISIT, 0 TO 17 during measurement period equals Yes, include in the Initial Population and proceed to Denominator.
 - f. If the Encounter Performed QDM data element, PREVENTIVE CARE – INITIAL OFFICE VISIT, 0 TO 17 during measurement period equals No, proceed to check next Encounter Performed.
 - g. If the Encounter Performed QDM data element, PREVENTIVE CARE SERVICES – ESTABLISHED OFFICE VISIT, 18 AND UP during measurement period equals Yes, include in the Initial Population and proceed to Denominator.
 - h. If the Encounter Performed QDM data element, PREVENTIVE CARE SERVICES – ESTABLISHED OFFICE VISIT, 18 AND UP during measurement period equals No, proceed to check next Encounter Performed.
 - i. If the Encounter Performed QDM data element, PREVENTIVE CARE SERVICES – INITIAL OFFICE VISIT, 18 AND UP during measurement period equals Yes, include in the Initial Population and proceed to Denominator.

- j. If the Encounter Performed QDM data element, PREVENTIVE CARE SERVICES - INITIAL OFFICE VISIT, 18 AND UP during measurement period equals No, proceed to check next Encounter Performed.
 - k. If the Encounter Performed QDM data element, OFFICE VISIT, during measurement period equals Yes, include in the Initial Population and proceed to Denominator.
 - l. If the Encounter Performed QDM data element, OFFICE VISIT, during measurement period equals No, proceed to check next Encounter Performed.
 - m. If the Encounter Performed QDM data element, CLINICAL ORAL EVALUATION during measurement period equals Yes, include in the Initial Population and proceed to Denominator.
 - n. If the Encounter Performed QDM data element, CLINICAL ORAL EVALUATION during measurement period equals No, do not include in Initial Population and stop processing.
4. Start Denominator
 - a. Denominator equals the Initial Patient Population. Denominator is represented by the Letter b in the sample calculation listed at the end of this document. Letter b equals 10 patients in the sample calculation.
 5. Start Numerator
 6. Check Diagnosis Active:
 - a. If the Diagnosis Active QDM data element DENTAL CARIES overlaps measurement period equals Yes, include in Numerator count. Numerator is represented by the Letter a in the sample calculation listed at the end of this document. Letter a equals 4 patients in the sample calculation.
 - b. If the Diagnosis Active data element DENTAL CARIES overlaps measurement period equals No, include in No/Missing Numerator Data Submitted count and stop processing.

Performance Rate** = $\frac{\text{Numerator (a=4 patients)}}{\text{Denominator (b=10 patients) - Denominator Exclusions (N/A) - Denominator Exceptions (N/A)}} = 40.00\%$	SAMPLE CALCULATION:
** For performance, a lower rate indicates better performance.	