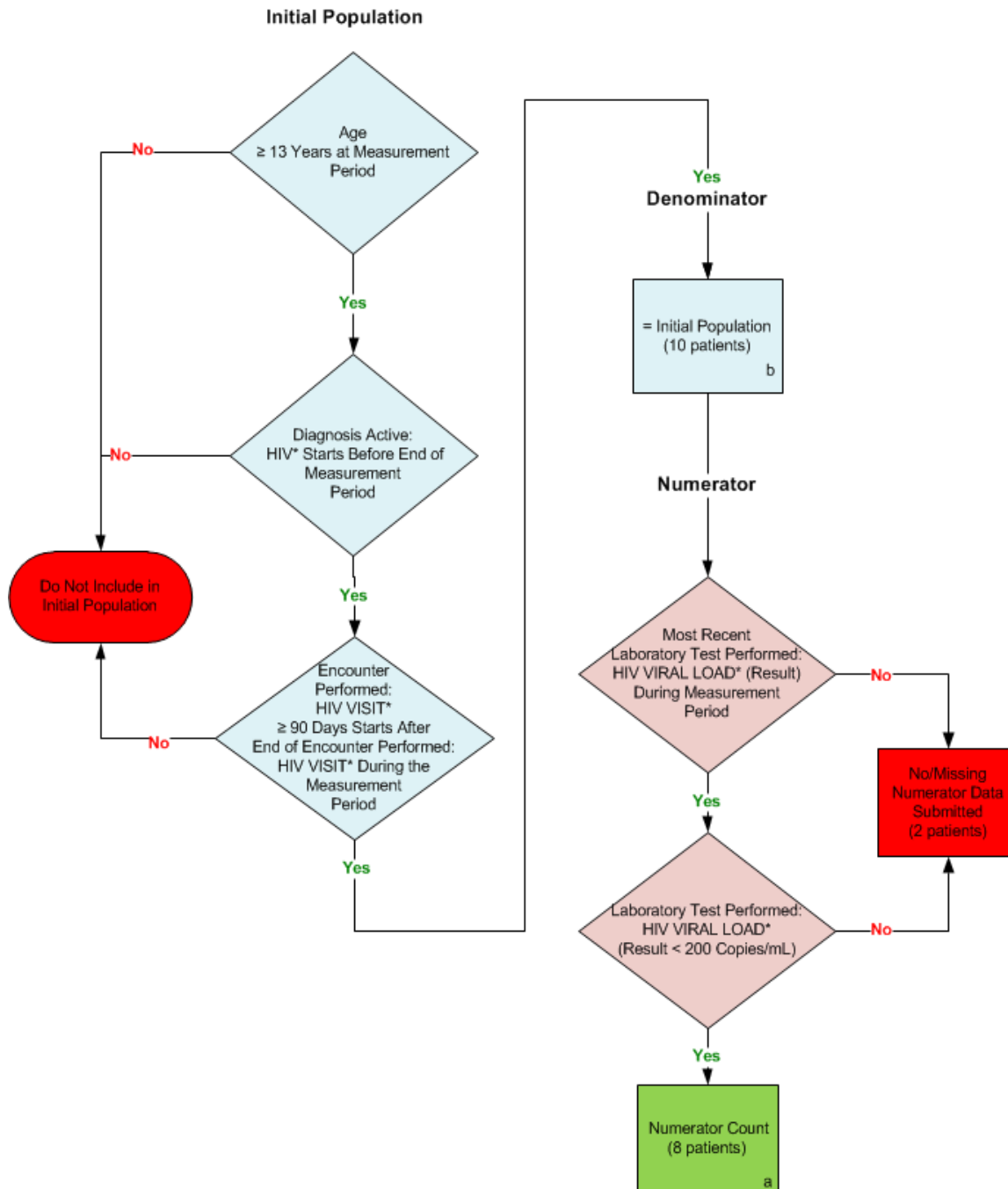


2014 eCQM Flow
Measure Identifier: CMS77v4

HIV/AIDS: RNA Control for Patients with HIV



*Please refer to the specific section of the eCQM to identify the QDM data elements and associated value sets for use in reporting this eCQM.

SAMPLE CALCULATION:

Performance Rate =

$$\frac{\text{Numerator (a=8 patients)}}{\text{Denominator (b=10 patients) - Denominator Exclusions (N/A) - Denominator Exceptions (N/A)}} = 80.00\%$$

2014 eCQM Flows
Measure Identifier: CMS77v4
HIV/AIDS: RNA Control for Patients with HIV

Please refer to the specific section of the eCQM to identify the Population Criteria and associated value sets for use in reporting this eCQM.

1. Start Initial Population
2. Check Age:
 - a. If the AGE is greater than or equal to 13 years at measurement period equals No, do not include in Initial Population. Stop Processing.
 - b. If the AGE is greater than or equal to 13 years at measurement period equals Yes, proceed to check Diagnosis Active.
3. Check Diagnosis Active:
 - a. If the Diagnosis Active QDM data element, HIV, starts before end of the measurement period equals Yes, proceed to check Encounter Performed.
 - b. If the Diagnosis Active QDM data element, HIV, starts before end of the measurement period equals No, do not include in Initial Population. Stop Processing.
4. Check Encounter Performed:
 - a. If the Encounter Performed QDM data element, HIV VISIT, greater than or equal to 90 days starts after end of Encounter Performed, HIV VISIT during measurement period equals Yes, include in the Initial Population and continue on to the Denominator.
 - b. If the Encounter Performed QDM data element, HIV VISIT, greater than or equal to 90 days starts after end of Encounter Performed, HIV VISIT during measurement period equals No, do not include in the Initial Population. Stop Processing.
5. Start Denominator
 - a. Denominator equals the Initial Population. Denominator is represented by Letter b in the sample calculation listed at the end of this document. Letter b equals 10 patients in the sample calculation.
6. Start Numerator
7. Check Most Recent Laboratory Test Performed:
 - a. If the Most Recent Laboratory Test Performed QDM data element, HIV VIRAL LOAD (result) during measurement period equals Yes, proceed to check Laboratory Test Performed.
 - b. If the Most Recent Laboratory Test Performed QDM data element, HIV VIRAL LOAD (result) during measurement period equals No, include in the No/Missing Data Submitted count. Stop Processing.

8. Check Laboratory Test Performed:

- a. If the Laboratory Test Performed QDM data element, HIV VIRAL LOAD (result less than 200 copies/mL) equals Yes, include in Numerator Count. Numerator is represented by Letter a in the sample calculation listed at the end of this document. Letter a equals 8 patients in the sample calculation.
- b. If the Laboratory Test Performed QDM data element, HIV VIRAL LOAD (result less than 200 copies/mL) equals No, include in the No/Missing Data Submitted count. Stop Processing.

SAMPLE CALCULATION:

Performance Rate =

$$\frac{\text{Numerator (a=8 patients)}}{\text{Denominator (b=10 patients) - Denominator Exclusions (N/A) - Denominator Exceptions (N/A)}} = 80.00\%$$