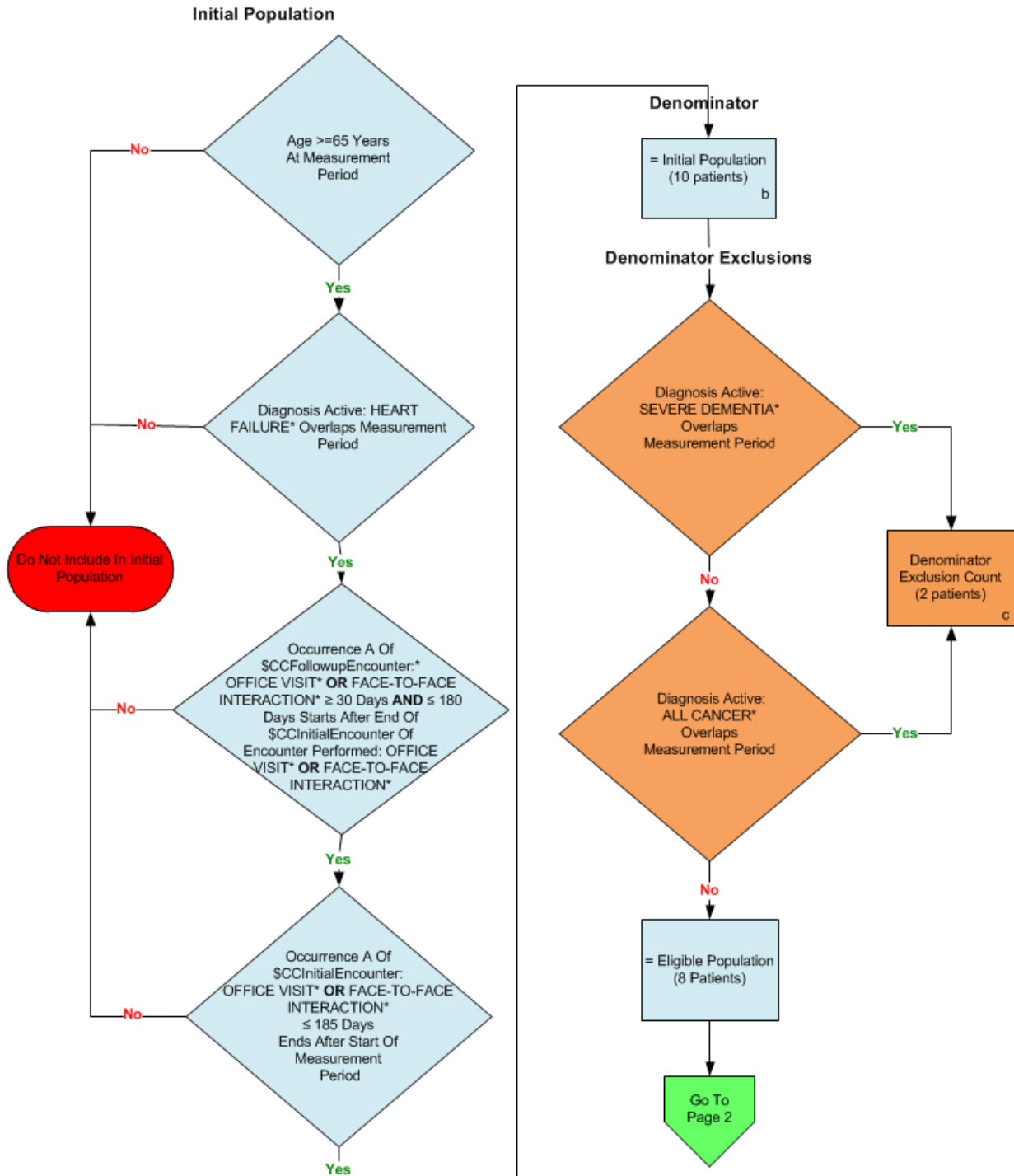
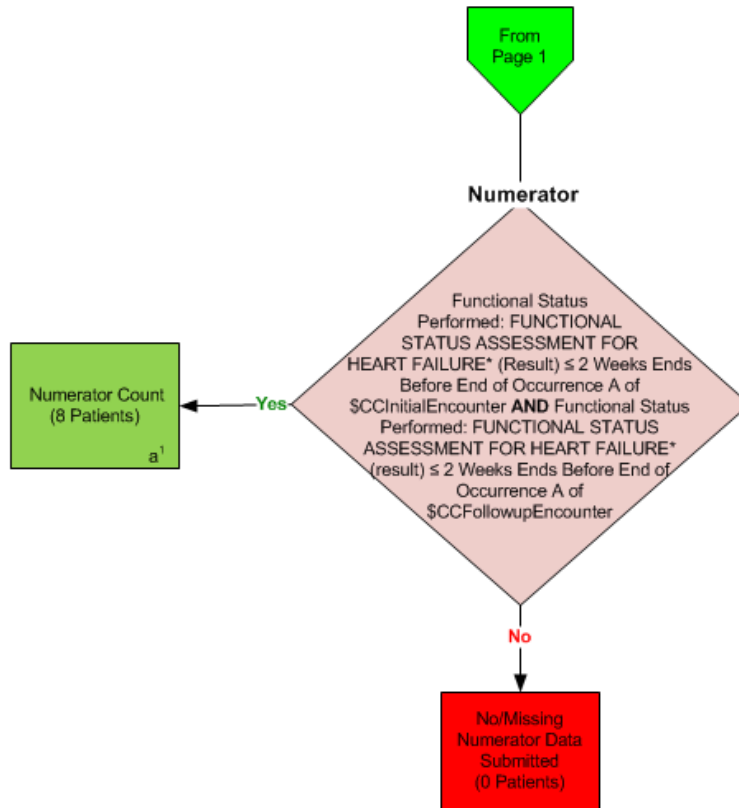


2014 eCQM Flow
Measure Identifier: CMS90v5
 Functional Status Assessment for Complex Chronic Conditions



*Please refer to the specific section of the eCQM to identify the QDM data elements and associated value sets for use in reporting this eCQM.

2014 eCQM Flow
Measure Identifier: CMS90v5
 Functional Status Assessment for Complex Chronic Conditions



*Please refer to the specific section of the eCQM to identify the Population Criteria and associated value sets for use in reporting this eCQM.

SAMPLE CALCULATION:

Performance Rate =

$$\frac{\text{Numerator (a}^1 = 8 \text{ patients)}}{\text{Denominator (b=10 patients) – Denominator Exclusions (c=2 patients) – Denominator Exceptions (N/A)}} = 100.00\%$$

2014 eCQM Flows
Measure Identifier: CMS90v5
Functional Status Assessment for Complex Chronic Conditions

Please refer to the specific section of the eCQM to identify the Population Criteria and associated value sets for use in reporting this eCQM.

1. Start Initial Population
2. Check Age:
 - a. If the AGE greater than or equal to 65 years of age at measurement period equals No, do not include in Initial Population. Stop Processing.
 - b. If the AGE greater than or equal to 65 years of age at measurement period equals Yes, continue processing and proceed to check Diagnosis Active.
3. Check Diagnosis Active:
 - a. If the Diagnosis Active QDM data element HEART FAILURE overlaps measurement period equals Yes, proceed to check Occurrence A of \$CCFollowupEncounter.
 - b. If the Diagnosis Active QDM data element HEART FAILURE overlaps measurement period equals No, do not include in Initial Population and Stop Processing.
4. Check Occurrence A of \$CCFollowupEncounter:
 - a. If the Occurrence A of \$CCFollowupEncounter QDM data element, OFFICE VISIT, or QDM data element, FACE-TO-FACE INTERACTION, greater than or equal to 30 days and less than or equal to 180 days starts after end of \$CCInitialEncounter of Encounter Performed QDM data element, OFFICE VISIT, or QDM data element FACE-TO-FACE INTERACTION, less than or equal to 185 days ends after start of measurement period equals Yes, proceed to check Occurrence A of \$CCInitialEncounter.
 - b. If the Occurrence A of \$CCFollowupEncounter QDM data element, OFFICE VISIT, or QDM data element, FACE-TO-FACE INTERACTION, greater than or equal to 30 days and less than or equal to 180 days starts after end of \$CCInitialEncounter of Encounter Performed QDM data element, OFFICE VISIT, or QDM data element FACE-TO-FACE INTERACTION, less than or equal to 185 days ends after start of measurement period equals No, do not include in Initial Population and Stop Processing.
5. Check Occurrence A of \$CCInitialEncounter:
 - a. If Occurrence A of \$CCInitialEncounter: Encounter Performed QDM data element, OFFICE VISIT, or QDM data element FACE-TO-FACE INTERACTION, less than or equal to 185 days ends after start of measurement period equals Yes, include in the Initial Population.
 - b. If Occurrence A of \$CCInitialEncounter: Encounter Performed QDM data element, OFFICE VISIT, or QDM data element FACE-TO-FACE INTERACTION, less than or

equal to 185 days ends after start of measurement period equals No, do not include in the Initial Population and Stop Processing.

6. Start Denominator

- a. Denominator equals the Initial Population. Denominator is represented by the Letter b in the sample calculation listed at the end of this document. Letter b equals 10 patients in the sample calculation.

7. Start Denominator Exclusions

8. Check Diagnosis Active:

- a. If the Diagnosis Active QDM data element, SEVERE DEMENTIA, overlaps measurement period equals Yes, include in Denominator Exclusion count. Denominator Exclusion is represented by Letter c in the sample calculation listed at the end of this document. Letter c equals 2 patients in the sample calculation.
- b. If the Diagnosis Active QDM data element, SEVERE DEMENTIA, overlaps measurement period equals No, proceed to check next Diagnosis Active.

9. Check Diagnosis Active:

- a. If the Diagnosis Active QDM data element, ALL CANCER, overlaps measurement period equals Yes, include in Denominator Exclusion count. Denominator Exclusion is represented by Letter c in the sample calculation listed at the end of this document. Letter c equals 2 patients in the sample calculation.
- b. If the Diagnosis Active QDM data element, ALL CANCER, overlaps measurement period equals No, proceed to Numerator.

10. Start Numerator

11. Check Functional Status Performed:

- a. If the Functional Status Performed QDM data element FUNCTIONAL STATUS ASSESSMENT FOR HEART FAILURE (Result) less than or equal to 2 weeks ends before end of Occurrence A of QDM data element \$CCInitialEncounterQDM (Encounter Performed, QDM data element, OFFICE VISIT, or QDM data element FACE-TO-FACE INTERACTION, less than or equal to 185 days ends after start of measurement period), AND FUNCTIONAL STATUS ASSESSMENT FOR HEART FAILURE (Result) less than or equal to 2 weeks ends before end of Occurrence A of QDM data element \$CCFollowupEncounter (Most Recent, QDM data element, OFFICE VISIT, or QDM data element, FACE-TO-FACE INTERACTION, greater than or equal to 30 days and less than or equal to 180 days starts after end of \$CCInitialEncounter (Encounter Performed, QDM data element, OFFICE VISIT, or QDM data element FACE-TO-FACE INTERACTION, less than or equal to 185 days ends after start of measurement period), equals No, include in the No/Missing Numerator Data Submitted count and stop processing.
- b. If the Functional Status Performed QDM data element FUNCTIONAL STATUS ASSESSMENT FOR HEART FAILURE (Result) less than or equal to 2 weeks ends

before end of Occurrence A of QDM data element \$CCInitialEncounterQDM (Encounter Performed, QDM data element, OFFICE VISIT, or QDM data element FACE-TO-FACE INTERACTION, less than or equal to 185 days ends after start of measurement period), AND FUNCTIONAL STATUS ASSESSMENT FOR HEART FAILURE (Result) less than or equal to 2 weeks ends before end of Occurrence A of QDM data element \$CCFollowupEncounter (Most Recent, QDM data element, OFFICE VISIT, or QDM data element, FACE-TO-FACE INTERACTION, greater than or equal to 30 days and less than or equal to 180 days starts after end of \$CCInitialEncounter [First Encounter Performed, QDM data element, OFFICE VISIT, or QDM data element FACE-TO-FACE INTERACTION, less than or equal to 185 days ends after start of measurement period]), equals Yes, include in Numerator count. Numerator is represented by Letter a1 in the sample calculation listed at the end of this document. Letter a1 equals 8 patients in the sample calculation.

SAMPLE CALCULATION:

Performance Rate =

$$\frac{\text{Numerator (a}^1 = 8 \text{ patients)}}{\text{Denominator (b=10 patients) – Denominator Exclusions (c=2 patients) – Denominator Exceptions (N/A)}} = 100.00\%$$