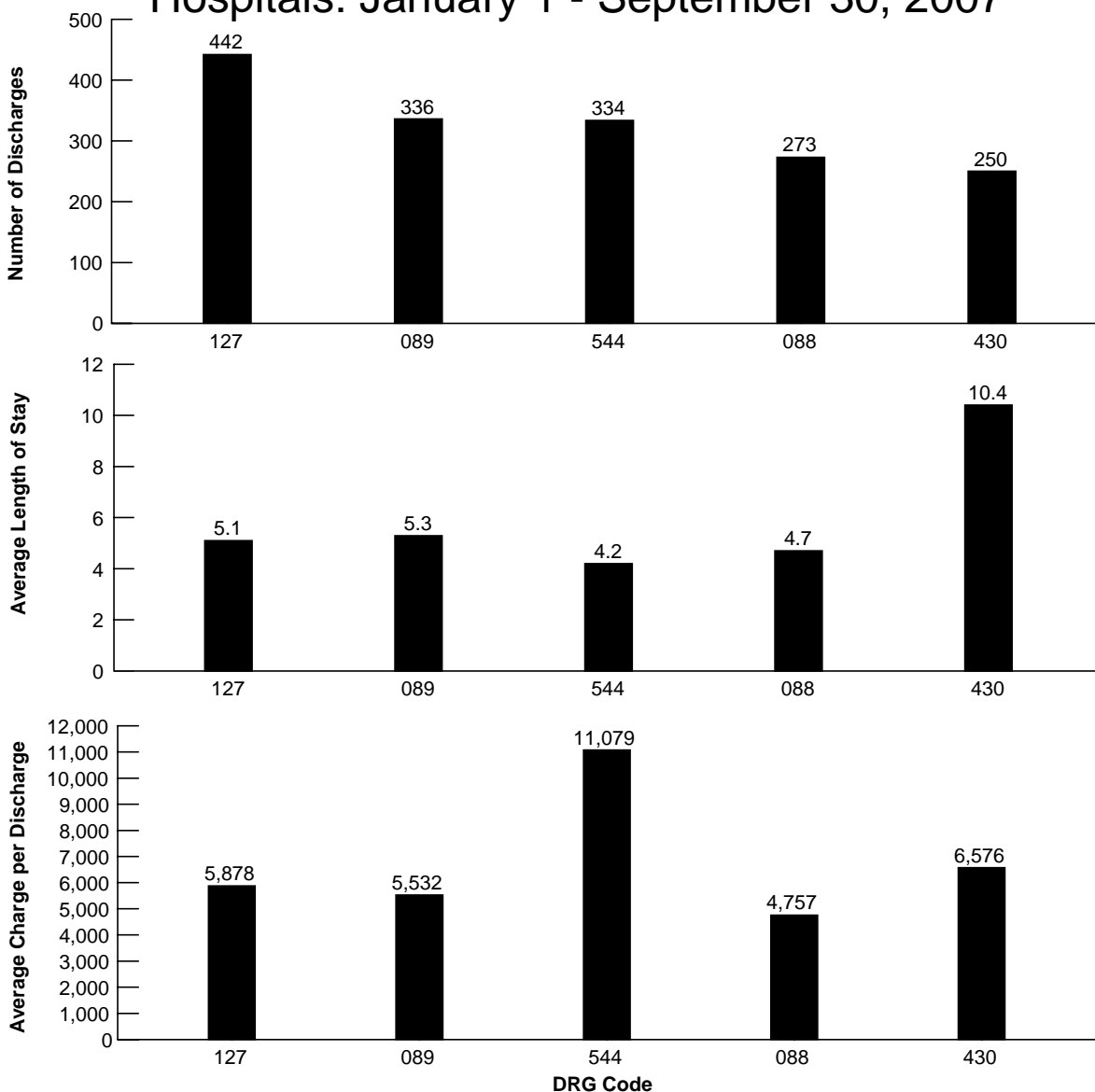


Figure 5.5
Five Most Frequent Medicare Diagnosis-Related Groups (DRGs) for Beneficiaries Discharged from Short-Stay Hospitals: January 1 - September 30, 2007¹



¹ Table reflects only January thru September for 2007 due to the major revision in the twenty-fifth version of the DRGs definitions manual, effective for all Medicare discharges on or after October 1, 2007. For the purpose of this table, version 24.0 was used.

NOTE: DRG codes are as follows: heart failure & shock, 127; simple pneumonia & pleurisy, 089; major joint replacement or reattachment of lower extremity, 544; chronic obstructive pulmonary disease, 088; and psychoses, 430.

SOURCE: Centers for Medicare & Medicaid Services, Office of Information Services: Data from the Medicare Data Extract System; data development by the Office of Research, Development, and Information.