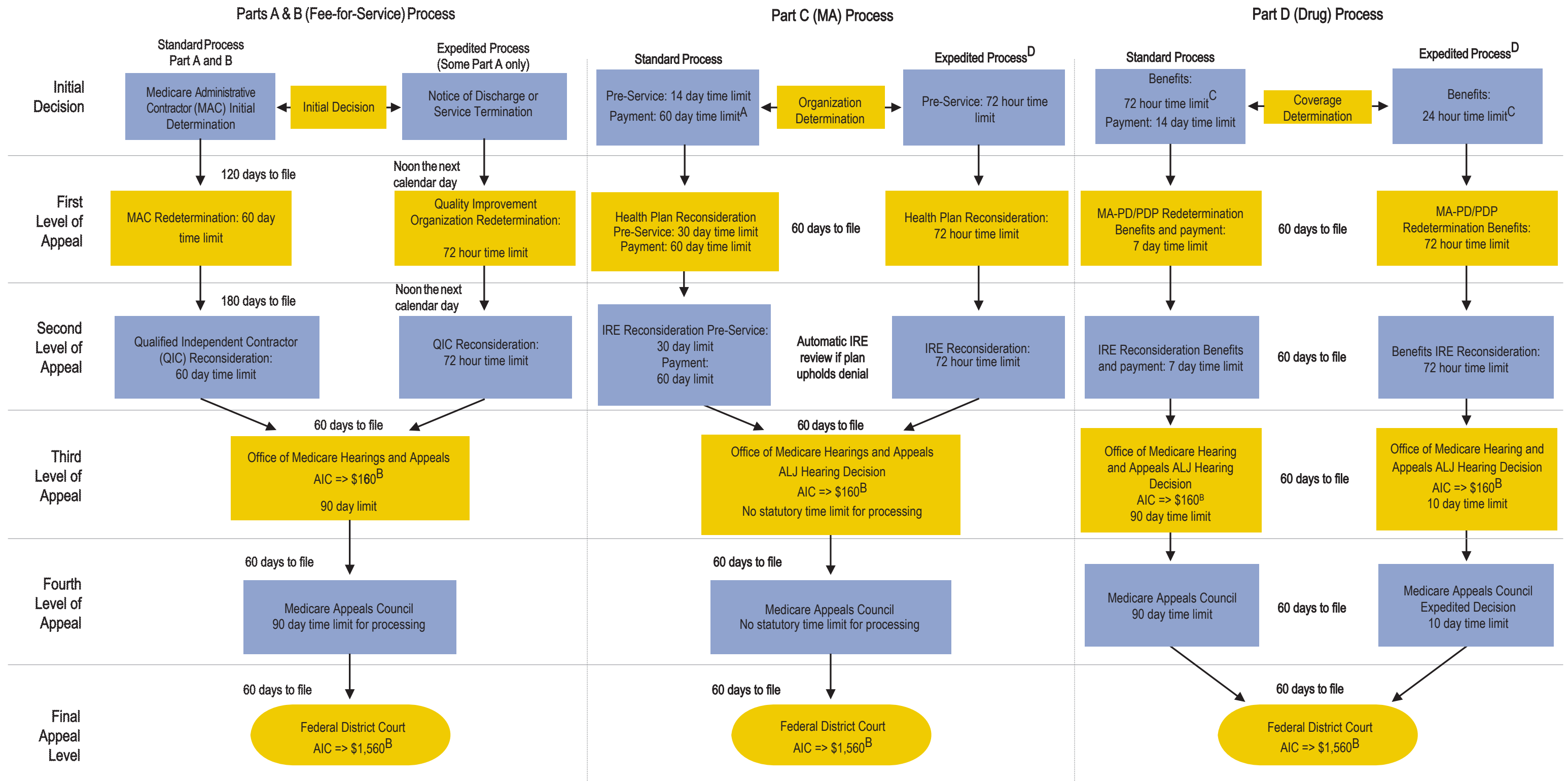


2017 Comparison of the Parts A, B, C, and D Appeal Processes



AIC = Amount in Controversy
ALJ = Administrative Law Judge
IRE = Independent Review Entity

MA-PD = Medicare Advantage Prescription Drug
MMA = Medicare Prescription Drug, Improvement & Modernization Act of 2003
PDP = Prescription Drug Plan

A: Plans must process 95% of all clean claims from out-of-network providers within 30 days. All other claims must be processed within 60 days;
B: The AIC requirement for all ALJ hearing and Federal District Court is adjusted annually in accordance with the medical care component of the Consumer Price Index. The chart reflects the CY 2017 AIC amounts.
C: A request for a coverage determination includes a request for a tiering exception or a formulary exception. The adjudication timeframes generally begin when the request is received by the plan sponsor. However, if the request involves an exception request, the adjudication timeframe begins when the plan sponsor receives the physician's supporting statement.
D: Payment requests cannot be expedited.