

Merit-based Incentive Payment System Measures and Activities in 2018

FOR PATHOLOGISTS



What is MIPS?

What are the Measures and Activities I Must Submit to Successfully Participate in MIPS?

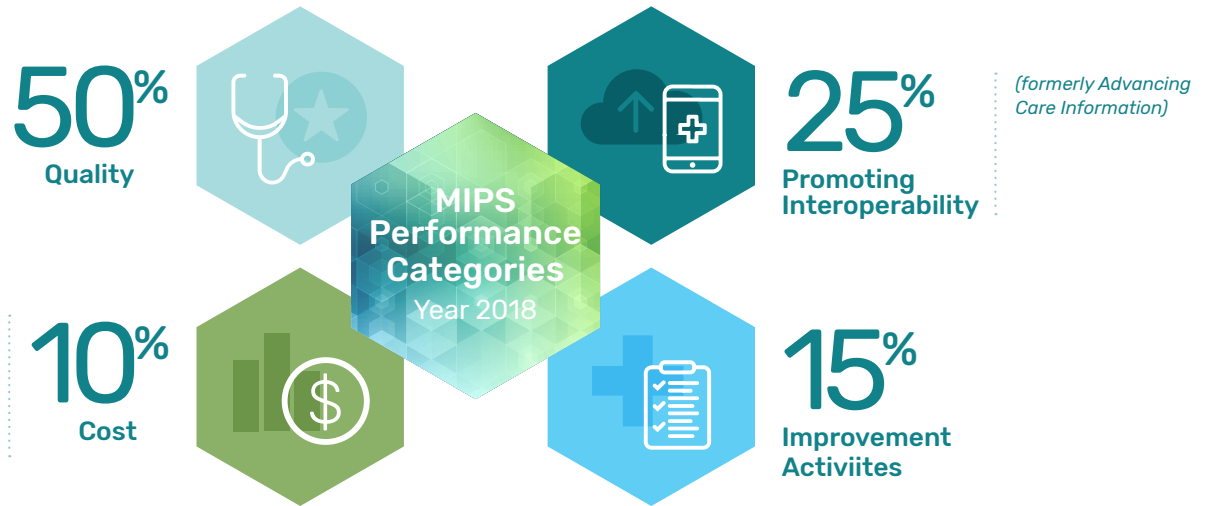
If you are participating in the Quality Payment Program through MIPS, your Medicare payment adjustment in 2020 will be based on submitting data and your performance for the following MIPS performance categories for the 2018 performance year:

The **Merit-based Incentive Payment System (MIPS)** is one of the two tracks of the Quality Payment Program, which implements provisions of the Medicare Access and CHIP Reauthorization Act of 2015 (MACRA).

Visit QPP.CMS.GOV to understand program basics, including submission timelines and how to participate.

Please note that performance category weights differ for clinicians in MIPS APMs.

(Note: Cost is 10% of the MIPS final score in the 2018 performance year; there is no data submission requirement.)



For 2018, the following weights are assigned to each performance category for MIPS eligible clinicians participating in a MIPS APM Entity (scored under the APM scoring standard):



*The Cost performance category is not scored for MIPS APMs.



What Measures and Activities Do I Submit for Each Category in 2018?

This resource provides a non-exhaustive sample of measures that may apply to pathologists. Make sure to consider your data submission method, practice size, patient demographic, and performance year to select the measures that best suit you. See a full list of measures at [QPP.CMS.GOV](#). The full specifications can be downloaded from the [2018 Resource page](#).



*(50% of final score
for most MIPS
eligible clinicians)*

Assesses the value of care to ensure patients get the right care at the right time

- Promoting dysplasia statement in esophageal biopsy reports
- Inclusion of appropriate pathological descriptors for breast cancer resection reports quantitative evaluation of human epidermal growth factor receptor 2 testing by immunohistochemistry
- Lung biopsy and resection reports indicating the specific histologic type
- Melanoma reports including pT category

In addition, MIPS eligible clinicians may want to consider applicable pathology specific Qualified Clinical Data Registry (QCDR) measures that are available via the QCDR data submission method only.

The 2018 QCDR measure specifications are found on the [2018 Resource page](#).





(25% of final score for most MIPS eligible clinicians, unless they are in a MIPS APM)

For more information on PI performance category measures, requirements, and reweighting for hospital-based and non-patient facing clinicians, see the [2018 PI Fact Sheet](#).

If you are a MIPS eligible clinician who reports on the PI performance category, you must attest to the prevention of information blocking attestation.

Supports the secure exchange of health information and the use of certified electronic health record technology (CEHRT).

The PI performance category score includes a base score, performance score and bonus score. Additionally, in 2018, there will still be 2 measure set options to report:

- PI Objectives and Measures
- 2018 PI Transition Objectives and Measures

MIPS eligible clinicians can report the PI Objectives and Measures if they have:

- Technology certified to the 2015 Edition; or
- A combination of technologies certified to the 2014 and 2015 Editions that support these measures

MIPS eligible clinicians can alternatively report the 2018 PI Transition Objectives and Measures if they have:

- Technology certified to the 2015 Edition; or
- Technology certified to the 2014 Edition; or
- A combination of technologies certified to the 2014 and 2015 Editions that support these measures

MIPS eligible clinicians need to meet the requirements of all the base score measures in order to receive the 50% base score. If these requirements are not met, they will get a 0% for the overall PI performance category score.

Pathologists may choose to report, at a minimum, on the following base score measures:

- Security Risk Analysis
- e-Prescribing
- Provide Patient Access
- Send a Summary of Care and Request/Accept Summary of Care OR Health Information Exchange

The performance score is calculated by using the numerators and denominators submitted for the specified measures included in the performance score, or by the “yes” answer submitted for the public health and clinical registry reporting measures.

MIPS eligible clinicians can earn bonus percentage points by doing the following:

- Reporting “yes” for 1 or more additional public health or clinical data registries beyond the Immunization Registry Reporting measure will result in a 5% bonus
- Clinicians and groups that exclusively report the PI Objectives and Measures (and using only 2015 Edition CEHRT) will result in a 10% bonus
- Reporting “yes” to the completion of at least 1 of the specified Improvement Activities using CEHRT will result in a 10% bonus

Reweighting the PI Performance Category

- Qualifying hospital-based pathologists will automatically have their PI performance category score reweighted to 0% of the final score
- A hospital-based MIPS eligible clinician is defined as furnishing 75% or more of their covered professional services in either the off-campus outpatient hospital (Place of Service 19), inpatient hospital (Place of Service 21), on-campus outpatient hospital (Place of Service 22), or emergency department (Place of Service 23) setting
- MIPS eligible clinicians may also submit a hardship exception application to have the PI performance category reweighted. For more information see <https://qpp.cms.gov/mips/exception-applications>
- In the case of reweighting to 0%, CMS will assign the 25% from the PI performance category to the Quality performance category so that 75% of the final score will be based on Quality
- Eligible clinicians that qualify for reweighting of the PI performance category can still choose to report if they would like, and if data is submitted, CMS will score their performance and weight their PI performance accordingly



15%

Improvement
Activities
Performance
Category

(15% of final score for most MIPS eligible clinicians, unless they are in a MIPS APM)

10%

Cost Performance
Category

(Helps create efficiencies in Medicare spending)

(10% of final score)

Gauges your participation in activities that improve clinical practice, such as:

- Ongoing care coordination
- Clinician and patient shared decision making
- Regularly using patient safety practices
- Expanding practice access.

In the 2018 performance year, MIPS eligible clinicians will be able to choose from 100+ activities to show their performance.

Some examples of the types of activities you may select to show your performance in 2018 are listed below. Please note that these are merely suggestions and do not represent requirements or preferences on the part of CMS. The full inventory from which MIPS-eligible clinicians or group must select their Improvement Activities in 2018 is available [here](#).

Clinicians choose activities they may participate in from among a list. Some activities include:

- Provide reports back to the referring MIPS eligible clinician or group
- Participate in a Qualifying Clinical Data Registry (QCDR)
- Participate in an AHRQ-listed patient safety organization
- Identify and communicate test results in a timely manner
- Participate in other quality improvement activities, such as American Board of Medical Specialties (ABMS) Multi-Specialty Portfolio Program or Maintenance of Certification (MOC) Part IV accredited programs
- Participate in population management research
- Implement formal quality improvement methods, practice changes, or other practice improvement processes

Cost Performance Category

- Participation does not require any special action by MIPS eligible clinicians to submit the cost performance category.
- Measures are calculated based on Medicare claims data.
- For MIPS eligible clinicians who do not have a cost performance category score assigned, the weight for the cost performance category will be reweighted to the quality performance category.

For more information or a **list of Advanced APMs** that may be right for you, please visit: QPP.CMS.GOV

Questions? Contact the Quality Payment Program at QPP@cms.hhs.gov or 1-866-288-8292 (TTY: 1-877-715-6222)

