

How CMS is Addressing Sickle Cell Disease (SCD)

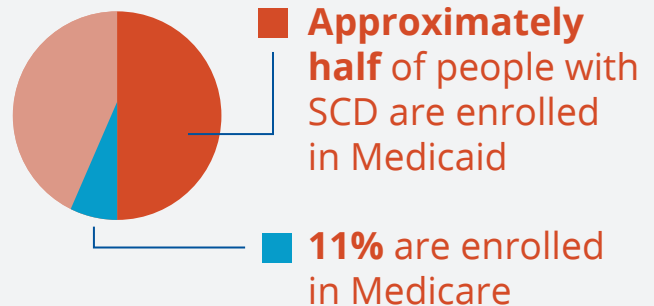
September 2023

“ Through our Sickle Cell Disease Action Plan, the Centers for Medicare & Medicaid Services is reaffirming our commitment to improving access to and the quality and experience of care for people living with sickle cell disease. Our goal is to drive solutions that help ensure people are able to achieve their highest level of health.

– Chiquita Brooks-LaSure, CMS Administrator ”


Who does it impact?


SCD affects approximately  **100,000** individuals in the United States (the majority of whom are Black, African American, and/or Hispanic)




CMS SCD Action Plan Key Areas:

1 Expanding coverage and access 

2 Improving quality and the continuum of care 

3 Advancing equity and engagement 

4 Examining data and analytics 



Find out more about how CMS is taking action to reduce disparities by reading the CMS Action Plan for Sickle Cell Disease.