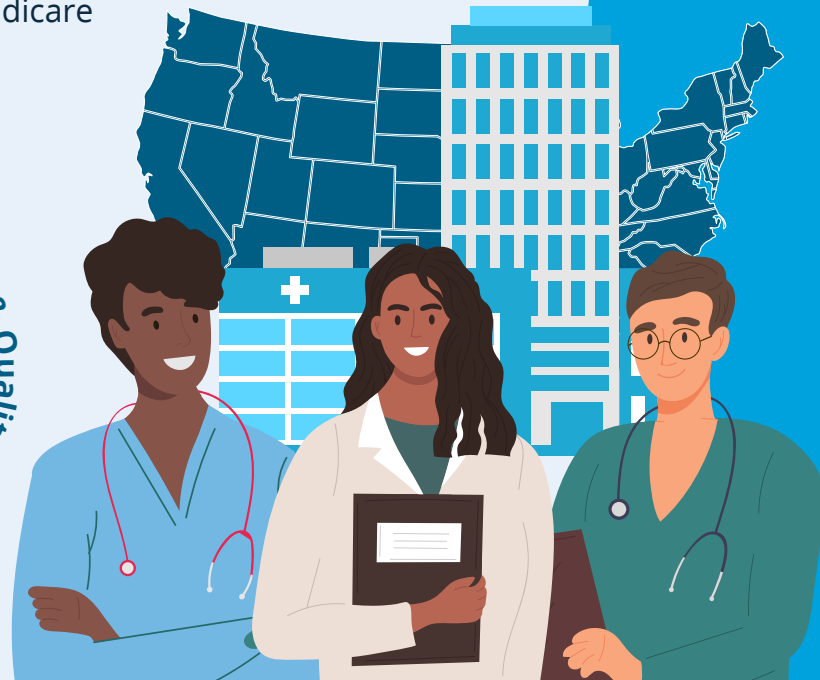


States Advancing All-Payer Health Equity Approaches and Development (AHEAD) Model

2024-2034

Under the AHEAD Model, states will take accountability for population health, health equity improvements, and all-payer and Medicare fee-for-service total cost of care growth.

States will engage with hospital and primary care providers to redesign care delivery to focus on keeping people healthy and out of the hospital.



Model Elements



- ▶ **Supports statewide transformation** to curb rising health care costs and invest in primary care



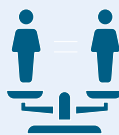
- ▶ **Improves care coordination** with primary care and other outpatient providers



- ▶ **Improves population health** through statewide health promotion efforts



- ▶ **Gives states and providers additional tools and incentives** to align care transformation activities across health care delivery and public health systems



- ▶ **Advances health equity** through new policies or programs