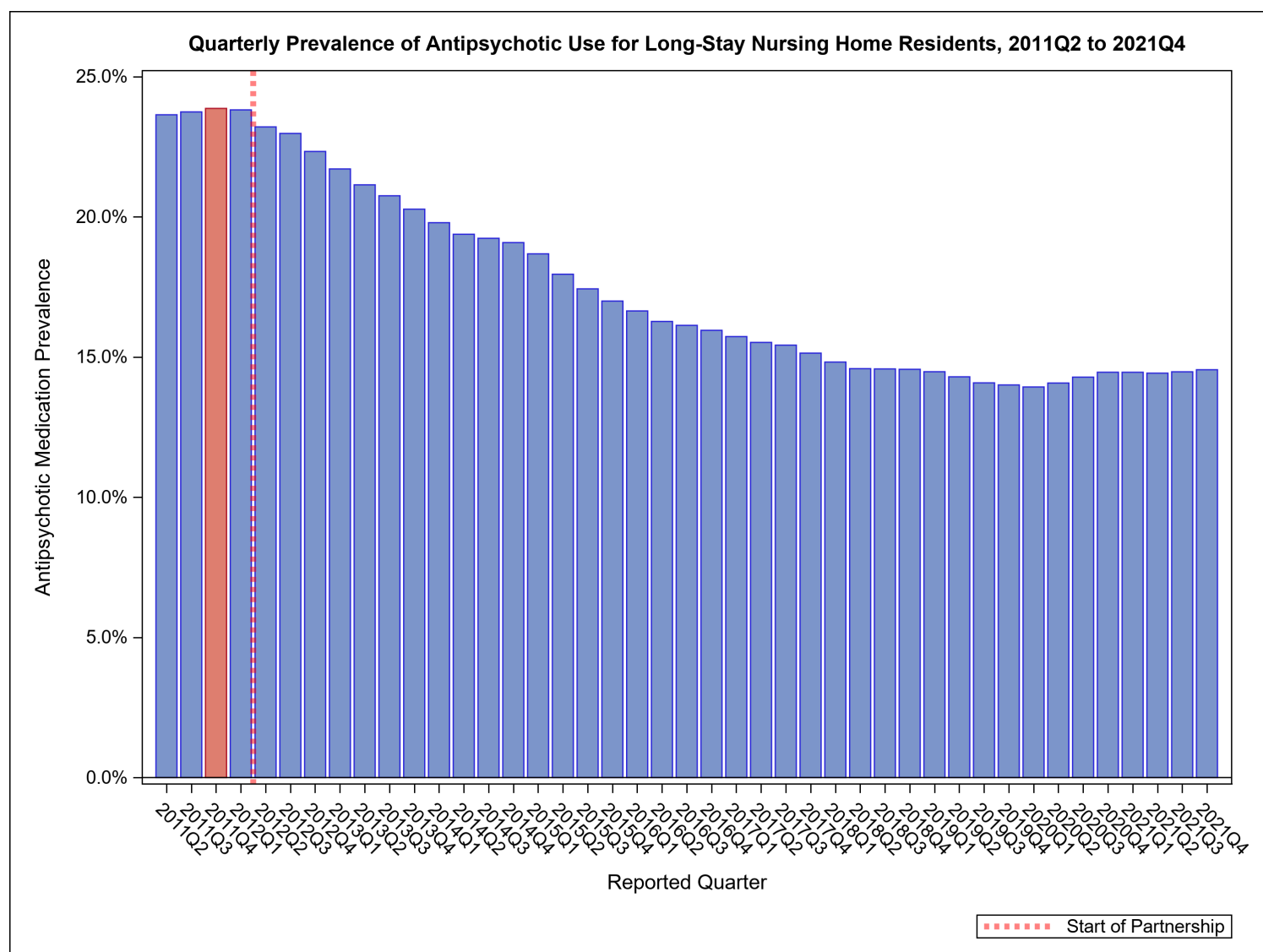


National Partnership to Improve Dementia Care in Nursing Homes: Antipsychotic Medication Use Data Report (April 2022)

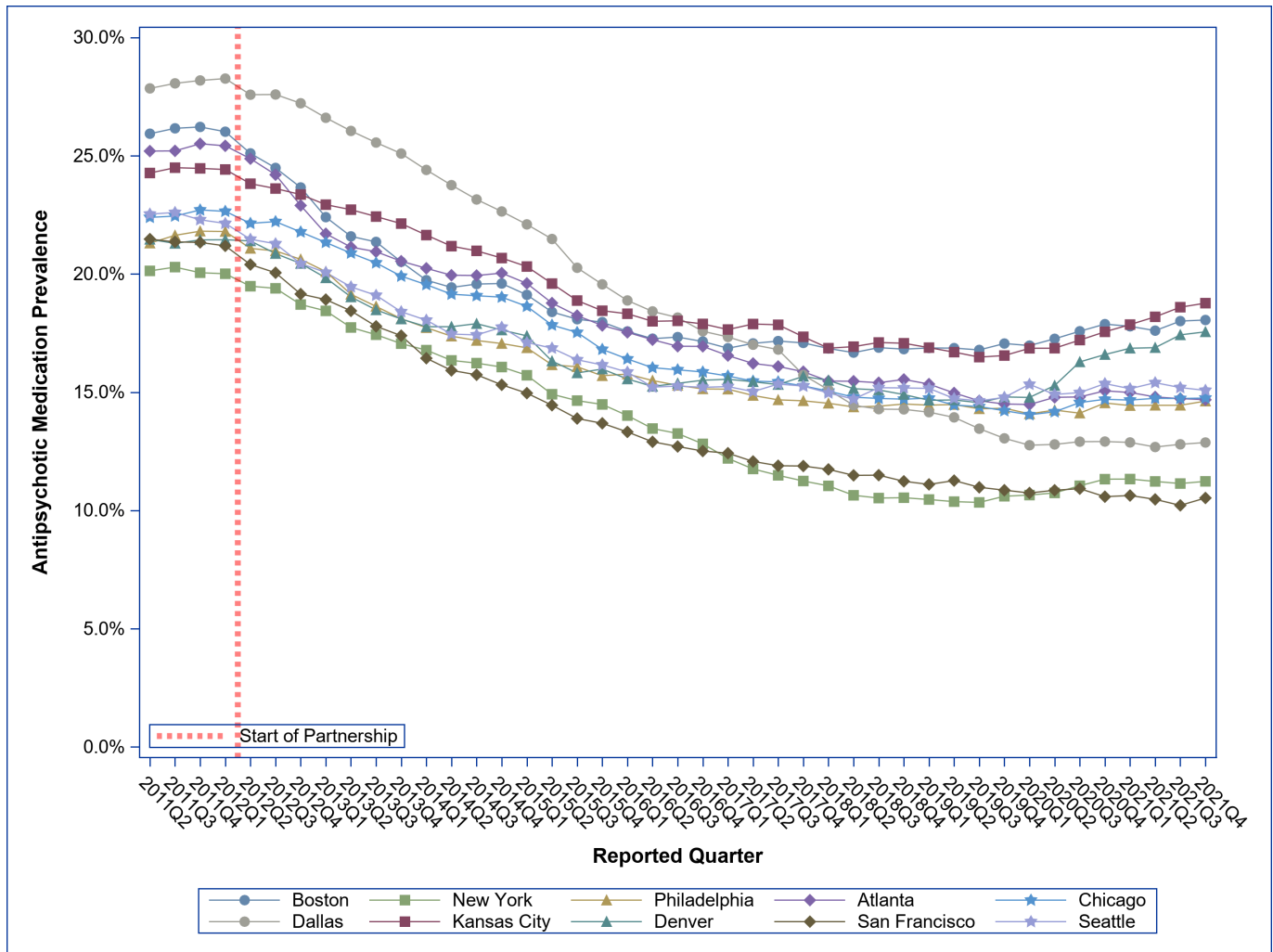
The National Partnership to Improve Dementia Care in Nursing Homes is committed to improving the quality of care for individuals with dementia living in nursing homes. The National Partnership has a mission to deliver health care that is person-centered, comprehensive and interdisciplinary with a specific focus on protecting residents from being prescribed antipsychotic medications unless there is a valid, clinical indication and a systematic process to evaluate each individual's need. The Centers for Medicare & Medicaid Services (CMS) promotes a multidimensional approach that includes; research, partnerships and state-based coalitions, revised surveyor guidance, training for providers and surveyors and public reporting.

CMS is tracking the progress of the National Partnership by reviewing publicly reported measures. The official measure of the Partnership is the percentage of long-stay nursing home residents who are receiving an antipsychotic medication, excluding those residents diagnosed with schizophrenia, Huntington's Disease or Tourette's Syndrome. In 2011Q4, 23.9 percent of long-stay nursing home residents were receiving an antipsychotic medication; since then there has been a decrease of 39.1 percent to a national prevalence of 14.5 percent in 2021Q4. Success has varied by state and CMS region, with some states and regions having seen a reduction of greater than 45 percent. CMS acknowledges that circumstances exist where clinical indications for the use of antipsychotic medications are present and does not expect that the national prevalence of antipsychotic medication use will decrease to zero.

For more information on the National Partnership, please send correspondence to dnh_behavioralhealth@cms.hhs.gov.



Quarterly Prevalence of Antipsychotic Use for Long-Stay Residents, CMS Locations



location	2011Q4	2017Q2	2017Q3	2017Q4	2018Q1	2018Q2	2018Q3	2018Q4	2019Q1	2019Q2	2019Q3	2019Q4	2020Q1	2020Q2	2020Q3	2020Q4	2021Q1	2021Q2	2021Q3	2021Q4	Percentage point difference (2011Q4-2021Q4)	% Change
National	23.9%	15.5%	15.4%	15.1%	14.8%	14.6%	14.6%	14.6%	14.5%	14.3%	14.1%	14.0%	13.9%	14.1%	14.3%	14.5%	14.5%	14.4%	14.5%	14.5%	-9.32	-39.1%
Boston	26.2%	17.1%	17.2%	17.1%	16.9%	16.7%	16.9%	16.8%	16.9%	16.9%	16.8%	17.1%	17.0%	17.3%	17.6%	17.9%	17.8%	17.6%	18.0%	18.1%	-8.17	-31.1%
New York	20.1%	11.8%	11.5%	11.2%	11.0%	10.6%	10.5%	10.5%	10.5%	10.4%	10.3%	10.6%	10.7%	10.7%	11.0%	11.3%	11.3%	11.2%	11.1%	11.2%	-8.83	-44.0%
Philadelphia	21.8%	14.9%	14.7%	14.6%	14.5%	14.4%	14.4%	14.5%	14.5%	14.5%	14.3%	14.3%	14.1%	14.2%	14.1%	14.5%	14.4%	14.4%	14.4%	14.6%	-7.19	-33.0%
Atlanta	25.5%	16.2%	16.1%	15.9%	15.5%	15.5%	15.4%	15.5%	15.3%	15.0%	14.6%	14.5%	14.5%	14.8%	14.8%	15.1%	15.0%	14.8%	14.7%	14.7%	-10.83	-42.4%
Chicago	22.7%	15.5%	15.4%	15.3%	15.0%	14.8%	14.7%	14.7%	14.5%	14.4%	14.4%	14.2%	14.0%	14.2%	14.6%	14.7%	14.7%	14.7%	14.7%	14.8%	-7.96	-35.0%
Dallas	28.2%	17.0%	16.8%	15.7%	15.1%	14.4%	14.3%	14.3%	14.2%	13.9%	13.5%	13.1%	12.8%	12.8%	12.9%	12.9%	12.9%	12.7%	12.8%	12.9%	-15.31	-54.3%
Kansas City	24.5%	17.9%	17.9%	17.3%	16.9%	16.9%	17.1%	17.1%	16.9%	16.7%	16.5%	16.6%	16.9%	16.9%	17.2%	17.6%	17.9%	18.2%	18.6%	18.8%	-5.70	-23.3%
Denver	21.4%	15.4%	15.3%	15.7%	15.5%	15.2%	15.1%	14.9%	14.7%	14.7%	14.6%	14.8%	14.8%	15.3%	16.3%	16.6%	16.9%	16.9%	17.4%	17.6%	-3.89	-18.1%
San Francisco	21.3%	12.1%	11.9%	11.9%	11.7%	11.5%	11.5%	11.2%	11.1%	11.3%	11.0%	10.9%	10.7%	10.9%	10.9%	10.6%	10.6%	10.5%	10.2%	10.5%	-10.81	-50.7%
Seattle	22.3%	15.0%	15.3%	15.3%	15.0%	14.7%	15.2%	15.2%	15.2%	14.7%	14.6%	14.8%	15.3%	14.9%	15.0%	15.4%	15.2%	15.4%	15.2%	15.1%	-7.21	-32.4%

Quarterly Prevalence of Antipsychotic Use for Long-Stay Residents, States

State	2011Q4	2017Q2	2017Q3	2017Q4	2018Q1	2018Q2	2018Q3	2018Q4	2019Q1	2019Q2	2019Q3	2019Q4	2020Q1	2020Q2	2020Q3	2020Q4	2021Q1	2021Q2	2021Q3	2021Q4	Rank in 2021Q4 (lower=better)	Percentage point difference (2011Q4-2021Q4)	% Change
ALABAMA	27.3%	18.7%	18.9%	19.4%	19.2%	19.8%	20.7%	20.6%	20.5%	19.3%	19.0%	18.4%	18.4%	19.0%	19.2%	19.2%	19.8%	19.7%	19.6%	19.7%	47	-7.62	-27.9%
ALASKA	13.7%	10.8%	13.0%	12.8%	12.0%	11.3%	11.0%	13.1%	11.2%	10.6%	10.4%	10.4%	10.2%	11.3%	13.8%	15.3%	17.1%	16.9%	16.8%	15.2%	24	1.47	10.7%
ARIZONA	22.7%	13.8%	13.3%	13.5%	13.2%	12.4%	13.0%	11.8%	11.5%	12.5%	12.1%	11.5%	11.1%	11.2%	10.8%	10.8%	10.1%	10.7%	10.0%	10.6%	4	-12.12	-53.3%
ARKANSAS	26.1%	15.2%	15.5%	14.5%	14.5%	14.1%	14.0%	14.1%	13.2%	13.3%	12.4%	11.3%	11.1%	11.3%	12.0%	11.7%	12.0%	12.0%	12.2%	12.6%	11	-13.51	-51.7%
CALIFORNIA	21.6%	11.9%	11.7%	11.7%	11.7%	11.5%	11.4%	11.1%	10.9%	11.1%	10.8%	10.8%	10.7%	10.8%	10.9%	10.5%	10.7%	10.4%	10.2%	10.5%	3	-11.09	-51.5%
COLORADO	19.9%	14.3%	14.3%	14.7%	15.3%	14.5%	15.0%	14.7%	14.6%	14.4%	14.7%	14.9%	14.8%	14.9%	15.9%	16.4%	16.2%	16.5%	17.3%	17.6%	38	-2.32	-11.7%
CONNECTICUT	26.0%	16.0%	16.2%	15.9%	15.9%	16.0%	16.5%	16.5%	16.7%	16.8%	16.2%	16.3%	15.5%	16.0%	16.3%	16.7%	16.4%	15.4%	15.7%	15.6%	26	-10.40	-39.9%
DELAWARE	21.3%	13.1%	13.4%	14.6%	13.8%	13.6%	13.8%	13.5%	12.9%	12.8%	12.5%	12.0%	11.9%	11.6%	11.8%	10.6%	11.0%	12.0%	11.5%		7	-9.83	-46.2%
DISTRICT OF COLUMBIA	20.0%	13.8%	10.9%	10.6%	13.1%	9.7%	9.5%	9.2%	10.7%	12.3%	10.7%	9.7%	9.8%	9.5%	9.7%	9.6%	8.4%	7.1%	8.0%	7.3%	1	-12.73	-63.7%
FLORIDA	24.5%	14.9%	14.9%	14.5%	13.9%	13.9%	14.0%	13.9%	13.6%	13.2%	12.5%	12.2%	12.2%	12.2%	12.0%	12.0%	11.6%	11.3%	10.6%	10.7%	5	-13.83	-56.5%
GEORGIA	28.7%	18.6%	18.8%	18.4%	18.4%	18.2%	17.9%	17.9%	18.1%	18.0%	17.7%	17.6%	17.6%	17.6%	17.9%	18.1%	18.2%	18.4%	18.2%	17.9%	40	-10.76	-37.5%
HAWAII	12.5%	6.8%	6.8%	7.6%	6.2%	6.8%	7.2%	7.7%	8.6%	8.3%	8.0%	7.7%	8.0%	7.8%	8.4%	8.6%	8.5%	8.9%	8.8%	8.8%	2	-3.67	-29.4%
IDAHO	25.3%	16.5%	16.9%	18.3%	18.6%	16.4%	17.1%	17.4%	17.8%	16.7%	16.8%	16.4%	17.1%	17.6%	17.7%	18.6%	18.1%	17.5%	18.1%	17.4%	37	-7.93	-31.3%
ILLINOIS	25.7%	19.1%	19.1%	19.3%	19.1%	18.5%	18.5%	18.6%	18.3%	18.0%	18.0%	18.0%	17.9%	18.1%	18.6%	18.3%	18.5%	18.7%	18.6%	18.1%	41	-7.58	-29.5%
INDIANA	24.0%	15.2%	15.5%	15.0%	14.9%	14.6%	14.2%	14.1%	14.5%	13.9%	13.7%	13.7%	13.4%	13.3%	13.5%	13.6%	13.5%	13.4%	12.9%	13.0%	14	-11.06	-46.0%
IOWA	22.3%	14.9%	15.1%	14.9%	14.4%	14.4%	14.9%	15.1%	15.0%	14.9%	14.6%	15.3%	15.5%	15.6%	15.9%	16.2%	16.6%	16.9%	17.0%	17.0%	36	-5.29	-23.7%
KANSAS	26.1%	19.8%	19.2%	18.4%	17.4%	17.4%	17.3%	17.0%	16.3%	16.1%	16.0%	16.2%	16.6%	16.1%	16.6%	16.9%	17.2%	17.4%	17.8%	17.7%	39	-8.42	-32.2%
KENTUCKY	26.0%	19.0%	18.4%	18.2%	17.7%	17.0%	16.9%	17.7%	17.2%	17.1%	17.0%	16.5%	16.3%	16.2%	16.6%	16.7%	16.4%	16.0%	16.0%	15.8%	28	-10.17	-39.1%
LOUISIANA	29.7%	17.6%	17.8%	17.0%	16.3%	16.4%	16.4%	16.1%	15.6%	16.1%	15.3%	14.9%	14.9%	15.4%	15.3%	15.7%	15.6%	16.1%	16.0%	16.9%	35	-12.84	-43.2%
MAINE	27.2%	17.6%	18.4%	17.8%	17.7%	17.2%	17.7%	17.6%	17.5%	18.1%	17.7%	18.8%	19.2%	19.0%	20.4%	20.7%	20.6%	20.3%	20.9%	21.4%	51	-5.87	-21.6%
MARYLAND	19.8%	12.8%	12.4%	12.4%	13.0%	12.5%	12.2%	12.0%	12.1%	12.1%	12.6%	12.8%	13.0%	13.5%	13.1%	13.1%	13.2%	13.3%	12.9%	13.0%	15	-6.77	-34.2%
MASSACHUSETTS	26.7%	18.1%	18.0%	18.2%	17.8%	17.6%	17.7%	17.7%	17.8%	17.6%	17.9%	18.2%	18.1%	18.2%	18.3%	18.7%	18.5%	18.7%	19.0%	19.2%	44	-7.53	-28.2%
MICHIGAN	16.4%	13.0%	13.2%	12.6%	13.0%	13.0%	13.2%	12.9%	13.1%	12.4%	12.3%	12.1%	11.9%	12.2%	12.8%	13.1%	12.8%	12.9%	12.9%	13.5%	17	-2.91	-17.8%
MINNESOTA	19.0%	13.4%	13.4%	14.1%	13.0%	12.7%	13.0%	13.3%	13.7%	13.9%	14.1%	13.8%	13.8%	14.5%	15.0%	15.7%	15.9%	16.3%	16.9%	16.8%	32	-2.28	-12.0%
MISSISSIPPI	26.6%	18.3%	18.4%	18.8%	18.4%	18.3%	18.2%	17.9%	18.4%	17.8%	17.9%	18.1%	18.5%	18.9%	19.2%	19.8%	19.8%	19.7%	20.1%	20.4%	49	-6.21	-23.3%
MISSOURI	26.1%	19.0%	19.0%	18.6%	18.3%	18.6%	18.6%	18.8%	18.8%	18.5%	18.3%	17.9%	18.3%	18.4%	18.8%	19.2%	19.7%	20.0%	20.6%	20.9%	50	-5.28	-20.2%
MONTANA	21.5%	14.7%	15.5%	16.0%	15.1%	13.6%	12.9%	12.6%	12.3%	12.5%	12.2%	13.4%	12.8%	14.3%	15.2%	15.5%	15.3%	15.5%	15.8%	16.8%	33	-4.72	-22.0%
NEBRASKA	22.3%	18.3%	18.5%	18.0%	17.7%	17.5%	17.8%	17.0%	17.0%	17.0%	16.7%	16.4%	16.6%	16.7%	16.9%	17.2%	16.9%	17.7%	18.3%	18.9%	43	-3.46	-15.5%
NEVADA	20.3%	15.7%	15.6%	16.0%	14.1%	13.7%	14.0%	15.2%	15.5%	14.0%	14.4%	13.0%	12.5%	13.0%	13.3%	13.1%	12.8%	12.3%	11.5%	12.7%	12	-7.56	-37.3%
NEW HAMPSHIRE	25.5%	15.1%	14.6%	14.2%	14.2%	14.1%	13.9%	13.7%	13.8%	14.0%	14.0%	14.6%	15.3%	16.1%	16.6%	16.3%	16.6%	16.8%	17.0%	16.4%	30	-9.16	-35.9%
NEW JERSEY	17.9%	10.7%	10.5%	10.2%	9.9%	9.7%	9.5%	9.3%	9.4%	9.5%	9.5%	9.6%	9.9%	9.9%	10.5%	10.7%	10.8%	10.5%	10.4%	10.7%	6	-7.17	-40.1%
NEW MEXICO	21.7%	15.4%	16.2%	15.9%	16.4%	17.0%	17.3%	17.1%	16.7%	16.0%	15.5%	15.6%	14.8%	14.0%	14.3%	14.8%	15.5%	15.7%	16.8%	16.8%	34	-4.90	-22.6%
NEW YORK	21.3%	12.4%	12.1%	11.7%	11.7%	11.3%	11.2%	11.3%	11.1%	10.9%	10.9%	11.2%	11.1%	11.3%	11.4%	11.7%	11.6%	11.7%	11.6%	11.6%	9	-9.71	-45.6%
NORTH CAROLINA	21.4%	12.9%	12.5%	12.5%	12.0%	12.4%	12.0%	12.1%	11.7%	11.2%	11.1%	11.2%	11.3%	11.7%	11.7%	12.2%	11.8%	11.6%	11.7%	11.7%	10	-9.73	-45.4%
NORTH DAKOTA	21.3%	17.1%	17.3%	18.0%	17.7%	17.6%	17.9%	18.1%	17.5%	17.2%	16.5%	16.8%	17.1%	17.5%	19.4%	19.0%	19.9%	19.8%	19.9%	20.1%	48	-1.16	-5.4%
OHIO	25.4%	15.9%	15.6%	15.2%	14.9%	14.7%	14.6%	14.5%	14.3%	14.2%	13.9%	13.5%	13.0%	12.9%	13.2%	13.4%	13.3%	13.2%	13.3%	13.3%	16	-12.13	-47.7%
OKLAHOMA	27.3%	19.5%	20.0%	19.5%	19.4%	18.8%	18.9%	19.1%	18.6%	18.4%	17.3%	16.7%	15.1%	14.8%	14.8%	14.5%	13.8%	13.8%	14.2%	14.2%	21	-13.12	-48.0%
OREGON	21.5%	14.4%	15.1%	14.2%	14.0%	13.7%	14.7%	14.5%	14.4%	14.2%	14.5%	14.7%	15.9%	14.8%	14.8%	15.5%	15.1%	16.2%	15.9%	16.0%	29	-5.50	-25.6%
PENNSYLVANIA	22.3%	15.4%	15.4%	15.5%	15.4%	15.6%	15.6%	15.6%	15.6%	15.6%	15.3%	15.1%	14.7%	14.8%	14.9%	15.5%	15.4%	15.3%	15.5%	15.6%	25	-6.68	-30.0%
RHODE ISLAND	24.0%	16.0%	16.3%	16.3%	15.9%	15.8%	16.4%	16.3%	16.0%	15.9%	15.4%	15.3%	15.5%	16.2%	16.5%	16.9%	17.0%	17.1%	18.4%	18.2%	42	-5.76	-24.0%
SOUTH CAROLINA	20.7%	13.8%	13.3%	12.9%	13.0%	13.0%	13.3%	13.8%	13.7%	13.2%	13.0%	13.0%	13.3%	13.8%	13.7%	14.3%	14.8%	15.1%	15.0%	14.7%	22	-6.01	-29.0%
SOUTH DAKOTA	21.5%	16.8%	16.5%	16.7%	16.0%	15.9%	16.4%	16.6%	16.4%	16.9%	16.4%	16.6%	17.2%	17.1%	17.7%	17.5%	18.2%	18.8%	19.2%	19.4%	45	-2.10	-9.7%
TENNESSEE	30.0%	16.5%	16.5%	15.7%	15.1%	15.1%	14.6%	15.0%	14.4%	14.5%	14.2%	14.3%	13.8%	14.9%	14.7%	15.3%	15.3%	15.0%	15.8%	15.7%	27	-14.28	-47.7%
TEXAS	28.8%	16.7%	16.1%	14.7%	13.8%	12.9%	12.6%	12.5%	12.8%	12.4%	12.2%	11.9%	11.9%	11.9%	12.0%	12.0%	12.1%	11.6%	11.7%	11.5%	8	-17.33	-60.1%
UTAH	27.1%	16.5%	15.9%	15.7%	14.7%	15.2%	13.6%	12.8%	12.5%	12.3%	12.1%	11.7%	11.1%	12.4%	13.1%	13.4%	14.8%	13.5%	14.4%	12.9%	13	-14.17	-52.3%
VERMONT	25.4%	17.2%	17.3%	18.2%	17.7%	16.7%	16.0%	15.2%	14.7%	14.8%	14.4%	13.8%	14.7%	15.8%	13.1%	14.9%	14.7%	15.0%	15.3%	15.1%	23	-10.31	-40.6%
VIRGINIA	23.0%	15.5%	15.2%	14.6%	14.2%	14.0%	13.9%	14.3%	14.2%	14.1%	14.0%	14.2%	13.9%	13.8%	13.4%	13.6%	13.5%	13.6%	13.1%	13.6%	19	-9.42	-40.9%
WASHINGTON	22.3%	15.2%	15.1%	15.1%	14.6%	15.0%	15.2%	15.0%	15.0%	14.6%	14.3%	14.7%	14.8%	14.3%	14.2%	14.1%	13.9%	14.0%	13.5%	13.6%	18	-8.72	-39.1%
WEST VIRGINIA	20.5%	14.9%	14.6%	14.6%	13.8%	13.1%	14.0%	14.5%	13.8%	14.5%	13.9%	14.6%	14.9%	15.2%	16.1%	16.0%	16.2%	16.2%	16.7%		31	-3.84	-18.7%
WISCONSIN	19.0%	12.7%	12.6%	12.6%	12.3%	12.3%	12.2%	12.3%	12.2%	12.1%	12.4%	12.3%	12.9%	13.0%	13.5%	13.7%	13.4%	13.8%	13.8%	14.1%	20	-4.91	-25.8%
WYOMING	16.8%	13.2%	12.4%	13.0%	13.6%	14.9%	14.4%	14.0%	13.8%	14.7%	14.9%	15.5%	15.9%	16.6%	17.7%	20.0%	18.3%	18.2%	18.7%	19.6%	46	2.79	16.6%