

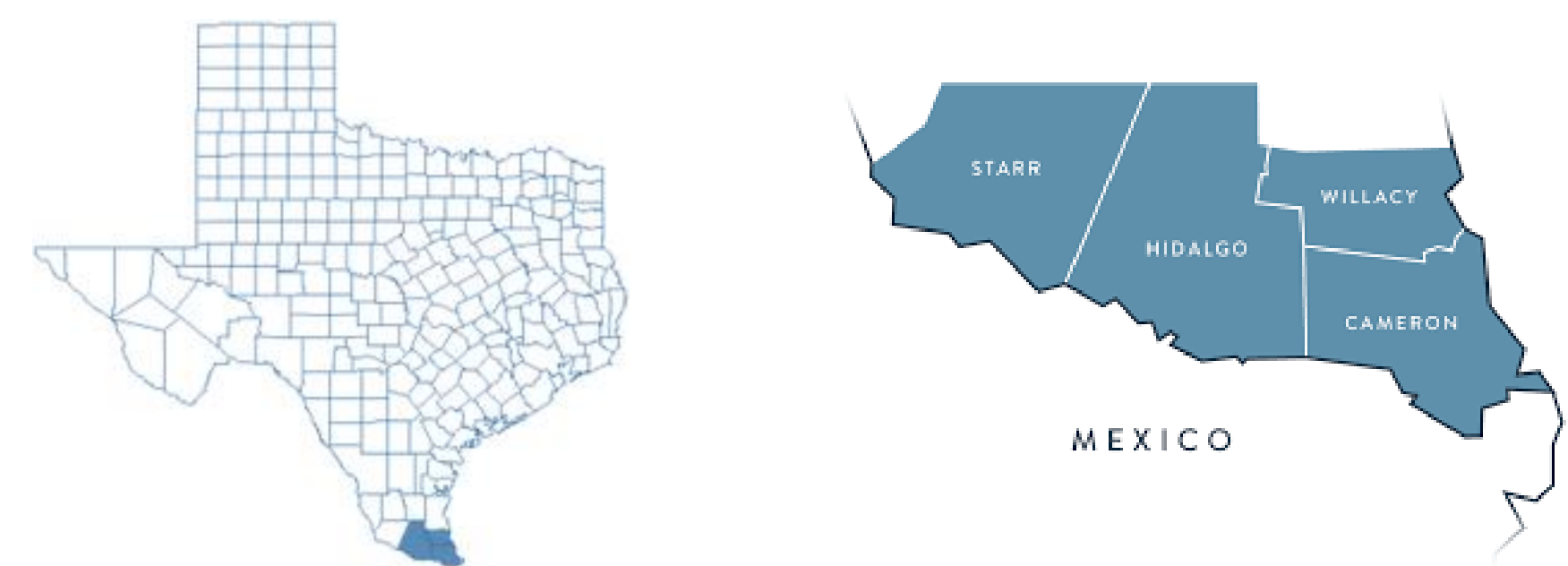
Bridging the Gap of Healthcare Inequities in the Rio Grande Valley: A Healthcare System's Integrated Health Equity Framework

Lauren Trifunovich, MA, LPC-A; Vanessa Saenz, MA, LPC-S



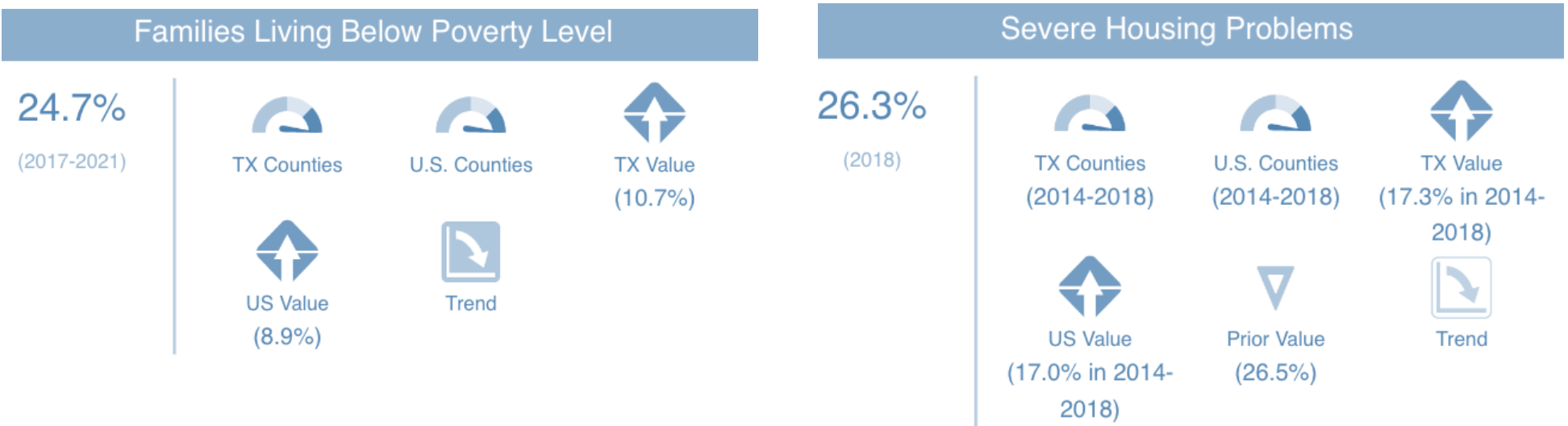
Rio Grande Valley (RGV)

The RGV is a culturally diverse region located in South Texas and encompasses four counties: Starr, Hidalgo, Willacy, and Cameron.



The RGV is 94% Latinx with high unemployment (6.25%) and poverty (25.42%), leading to health inequity like limited access to basic needs, transportation issues, and low health literacy rates (U.S. Census Bureau, 2019).

Population by Ethnicity	Region: Rio Grande Valley		State: Texas	
	Persons	% of Population	Persons	% of Population
Hispanic/Latino	1,323,797	94.27%	12,305,785	40.93%
Non-Hispanic/Latino	80,428	5.73%	17,760,119	59.07%

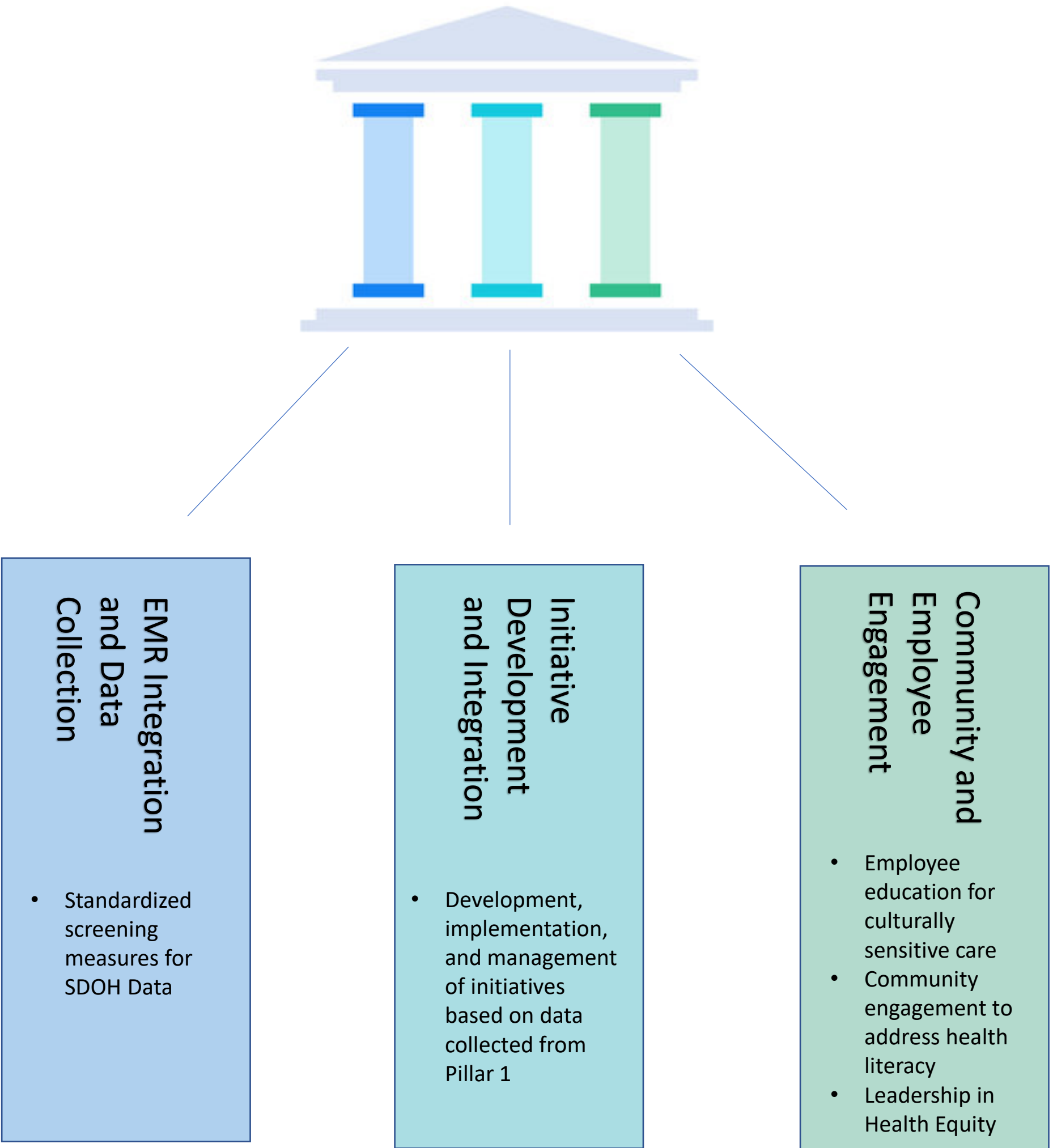


DHR Health

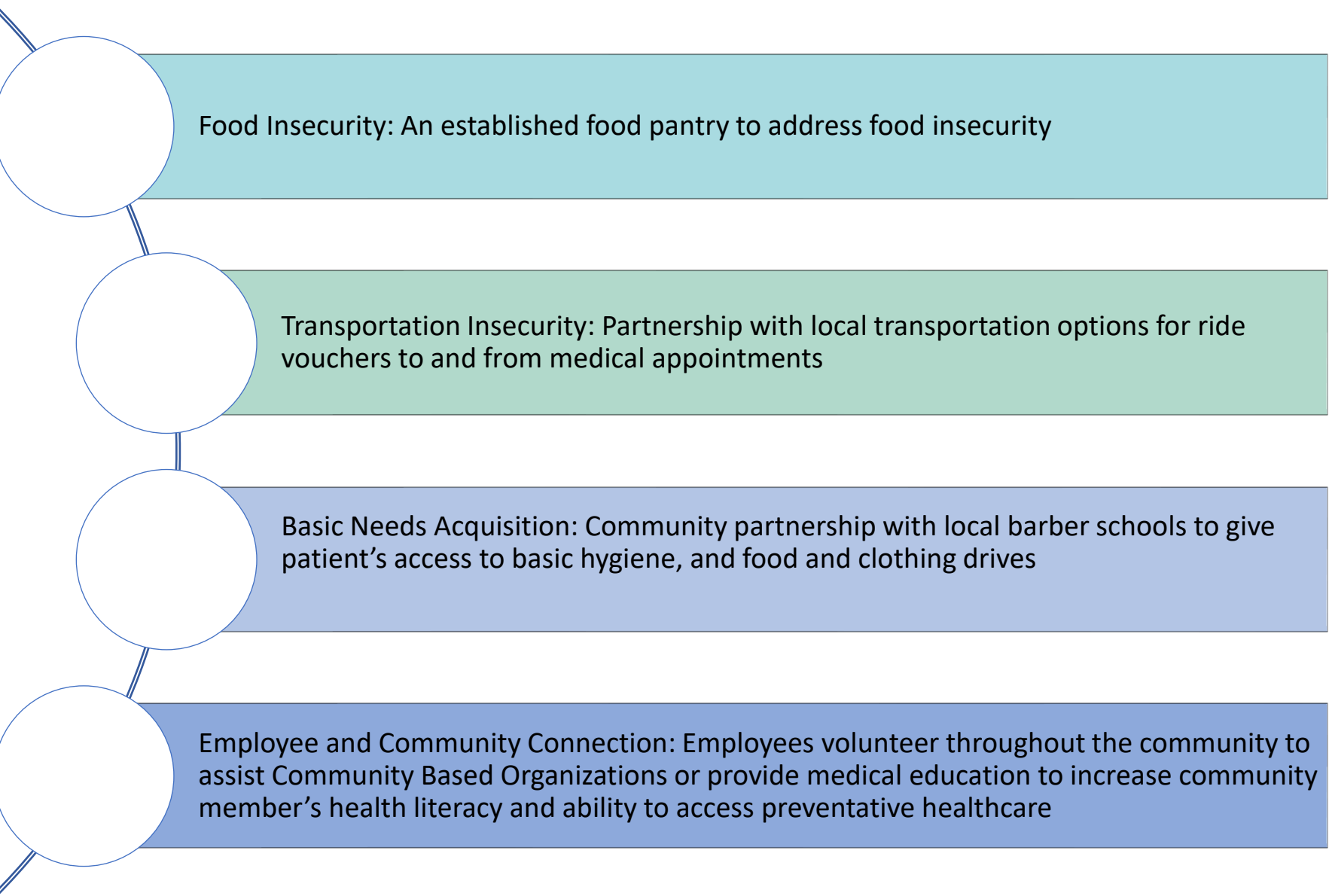
DHR, a for-profit physician- owned hospital, was founded in 1997 to help over 1.3 million residents resolve limited healthcare access challenges in a community lacking public and county hospitals.

"A healthcare system's successful implementation of a scalable and reproducible integrated framework to address and reduce health disparities in an underserved population in the Rio Grande Valley of South Texas."

3 Pillar Approach to Health Equity in a Healthcare System



Current Initiatives



Future Directions

DHR Health is committed to advancing health equity by forging a forward-looking path. To achieve this, we will:

- Expand our health system's framework to incorporate health equity.
- Increase involvement from key members of leadership
- Expand data collection efforts.
- Increase focus on employee education
- Implement additional initiatives that are culturally sensitive to the population and align closely with community needs

