



Electronic Submission of Medical Documentation (esMD)

HH Technical Release Changes for AR2023.04.0 (Preliminary)

Version 1.0

12/09/2022

Document Number: AR2023.04.0_HIH_TRC-Prelim

Contract Number: HHSM-500-2016-00068I:75FCMC21F0001

Table of Contents

1. Introduction	1
2. Purpose	2
3. Assumptions	3
4. Changes Planned for the esMD VDC April 2023 Release.....	4
4.1 Logical Process Flow.....	4
4.1.1 eMDR Post-Pay-Other Logical Flow	4
4.2 XDR Registry Metadata Information (eMDR)	5
4.2.1 XDR Document Metadata Information (eMDR).....	8
4.2.2 Clinical Document Information (eMDR)	10
4.3 eMDR (Post-Pay-Other) Interface.....	18
4.3.1 eMDR Post-Pay-Other Request.....	18
4.3.2 eMDR Report.....	22
4.3.3 Provider Delivery Acknowledgment	23
4.4 Communication Interface and Protocol Specification.....	24
4.4.1 esMD Interface-Oriented Web Service Endpoints.....	24
4.5 MicroStrategy Report.....	25
4.5.1 Reconciliation Report.....	25
4.5.2 eMDR Failure Report.....	25
5. Sample Files	27
Appendix A: Record of Changes	45
Appendix B: Acronyms	46
Appendix C: Referenced Documents.....	47

List of Figures

Figure 1: eMDR Post-Pay-Other Process Flow	4
Figure 2: eMDR (Post-Pay-Other) Request Schema (XML).....	19
Figure 3: eMDR-Report Request Schema (XML)	22
Figure 4: (MR101) Reconciliation Report.....	26
Figure 5: (MR115) eMDR Transaction Failure Report.....	26
Figure 6: eMDR Post-Pay-Other Request XSD	27
Figure 7: eMDR Post-Pay-Other Request XML	40

Figure 8: eMDR Report XML	41
Figure 9: XDR Endpoint Configuration To Submit CMS esMD Gateway (v4.0 above) ..	42

List of Tables

Table 1: eMDR Post-Pay-Other Logical Process Flow Steps	5
Table 2: Registry Metadata Information	6
Table 3: Document Metadata Information	8
Table 4: Clinical Document Information.....	11
Table 5: eMDR (Post-Pay-Other) Request Data.....	20
Table 6: eMDR Report Data	23
Table 7: XDR Provide and Register Document Set Response	24
Table 8: Web Service Details.....	25
Table 9: Record of Changes	45
Table 10: Acronyms	46
Table 11: Referenced Documents	47

1. Introduction

This Technical Release Changes document provides the interface and technical release changes that have been identified for:

Electronic Medical Documentation Request (eMDR) Post-Pay-Other that is scheduled for Production deployment in the April 2023 release (AR2023.04.0).

- esMD Release AR2023.04.0 consists of application changes and MicroStrategy Reports (esMD CR 12894) that will be deployed in PROD in April 2023.
- The application changes includes updating the esMD system by implementing the new Post-Pay Electronic Medical Documentation Requests (eMDR) functionality which will start accepting eMDRs from additional Review Contractor Types (QIC, CERTs & SMRCs).
- The purpose of this Change Request (CR) is to implement the changes required to receive, process, generate and send the **Post-Pay-Other** 'ADR Letter Package' information received from the RC to the HIHs/Providers. This CR is also meant to encompass the exchange of the Registered Provider File (RPF) and Document Code File (DCF) for its respective purposes.
- eMDR Post-Pay-Other changes will be shown in the MR101, MR102 and MR115 Reports.
- The 'ADR Letter Package' comprises of the *Structured Letter Record* (SLR) containing general information about the ADR Letter and the PDF copy of the ADR letter and the process metadata.

The following documents must be used in conjunction with the Release Summary:

1. Health Level Seven International (HL7)-Clinical Data Architecture (CDA) implementation standards;
2. Centers for Medicare & Medicaid Services (CMS) *Health Information Handler (HIH) Implementation Guide*.

Information is provided on the interface updates that relate to the eMDR/Additional Documentation Request (ADR) (Post-Pay-Other), and the CMS esMD system that must be adhered to by all trading partners.

The audience of this document are implementers, such as architects and developers, responsible for the exchange of supporting/attachment information among healthcare providers, HIHs, and their business associates, such as CMS.

2. Purpose

This document outlines the functional/technical aspects of the following functionalities that will be deployed in the April 2023 release:

1. Provides the high-level structure of possible responses/acknowledgments sent to HIHs from esMD.
2. Summary of the technical changes with respect to the existing implementation of eMDR/ADR program.

This document does not address installation and configuration details of the actual implementation.

3. Assumptions

The esMD system complies with industry standards defined by various standards committees. Hence, it is extremely important that esMD participants adhere to the norms with the following assumptions:

1. Medicare providers shall have active signed agreements with their respective HIHs to exchange the electronic transactions via esMD (including Review Contractor (RC) outbound transactions with Protected Health Information (PHI)).
2. Medicare providers will endorse their respective HIHs in the National Plan and Provider Enumeration System (NPPES) by updating the keyword “CMS esMD eMDR” in the “Other End Point Use” field and End Point Description with the HIH Organizational Identifier (OID) to exchange the eMDR and ADR (Pre-Pay, Post-Pay, Post-Pay-Other) via esMD.
3. The HIH will use the eMDR Post-Pay-Other Extensible Markup Language (XML) Schema Definition (XSD) (refer to Section 5 Sample Files).
4. All transactions initiated by HIHs will comply with the Transport Layer Security (TLS) v1.2 security standard.
5. All transmissions will adhere to the Healthway Nationwide Health Information Network (NwHIN) standard.
6. Communications between the CMS esMD system and Medicare RCs will be asynchronous.

4. Changes Planned for the esMD VDC April 2023 Release

The following subsections identify the changes planned for the April 2023 release as of the release date of this document.

4.1 Logical Process Flow

4.1.1 eMDR Post-Pay-Other Logical Flow

The eMDR post-pay-Other logical flow depicts the series of events and sequence of interactions between esMD and the HIH via the XDR interface. The order and timing of the exchange of messages with HIHs are driven by RC submissions.

Figure 1: eMDR Post-Pay-Other Process Flow depicts the logical processing of the eMDR (Post-Pay-Other) process, and Table 1: eMDR Post-Pay-Other Logical Process Flow Steps details the sequence of interactions between esMD and HIH.

Figure 1: eMDR Post-Pay-Other Process Flow

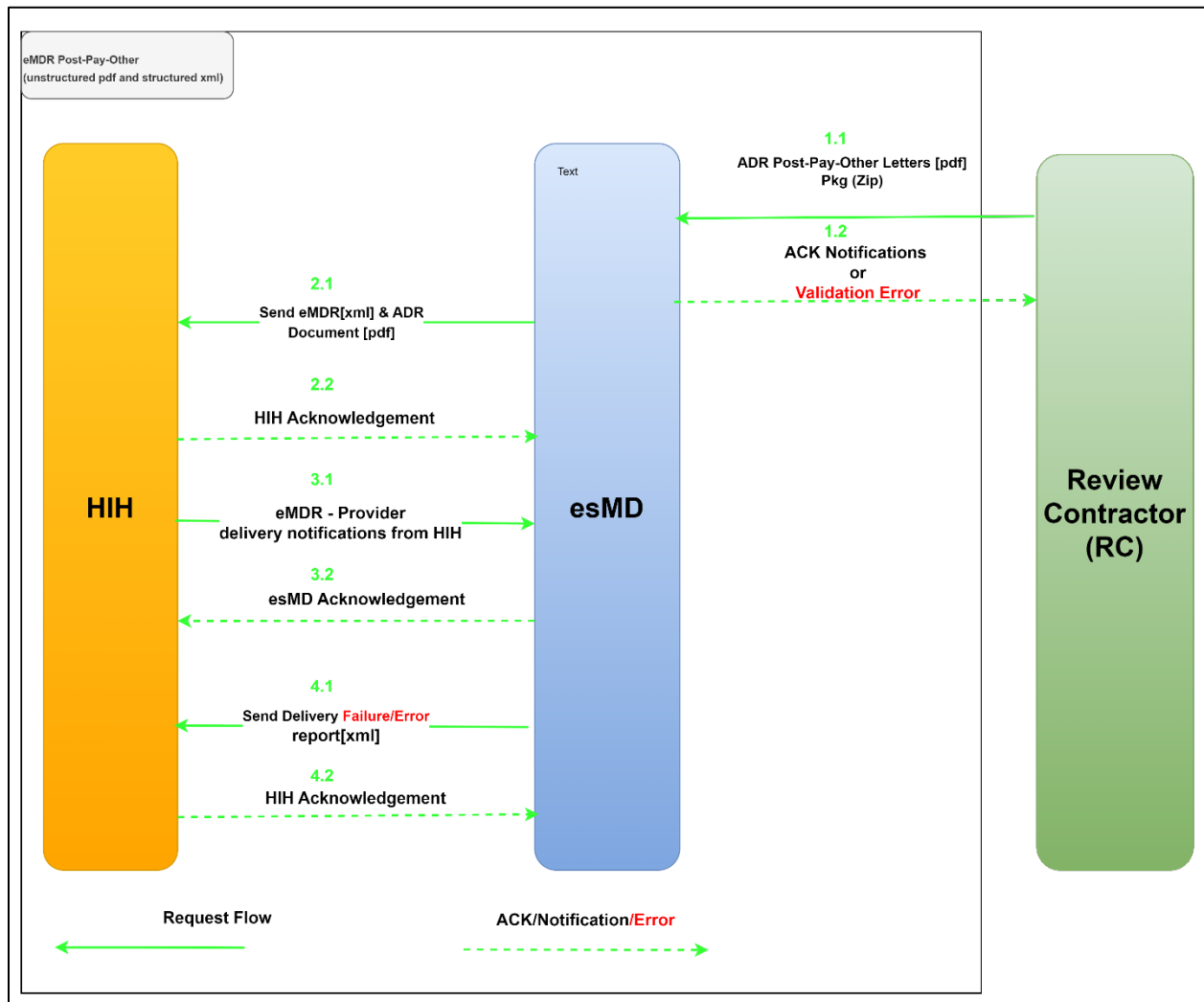


Table 1: eMDR Post-Pay-Other Logical Process Flow Steps

Message Sequence	Description
1.1	The esMD system receives the ADR Letter PDF and structured eMDR Post-Pay-Other XML within a zip file from the RC.
1.2	The esMD system processes the eMDR Post-Pay-Other package received from the RC and generates the appropriate acceptance or rejection response acknowledgement to the RC.
2.1	The esMD system constructs the XDR request payload with the ADR PDF letter and structured Post-Pay-Other eMDR (XML) embedded in the unstructured HL7 clinical document standard and sends it to the HIH.
2.2	The HIH acknowledges the acceptance/failure with any of the following statuses for the document/request received from esMD: <ol style="list-style-type: none"> 1. RequestAccepted 2. ResponseAccepted 3. Success 4. Error
3.1	The HIH sends the package delivery confirmation to esMD after the ADR PDF letter and eMDR structured XML are successfully transmitted to the Provider.
3.2	The esMD system acknowledges the delivery confirmation received from the HIH with any of the following statuses: <ol style="list-style-type: none"> 1. RequestAccepted 2. ResponseAccepted 3. Success 4. Error

4.2 XDR Registry Metadata Information (eMDR)

Table 2: Registry Metadata Information provides the list of key data elements, usage definitions (i.e., required or optional), and their representations in the submission set. These data elements should be enough for any HIH to route the eMDR submission to the appropriate providers. The HIHs are required to distinguish the eMDR delivery failure report based on the eMDRType metadata described in the table.

Table 2: Registry Metadata Information

S. No.	XDR Submission Set Metadata Attribute	Definition	Example	eMDR (Pre-Pay/ Post-Pay) R-Required O-Optional	eMDR Report (Required metadata)
1	id	Registry Package ID is required	<ns3:id="SubmitterSet01">	R	R
2	hihOID	HIH OID represents the HIH Organization ID. This will be an HL7-issued OID. Length: 35 (Alphanumeric)	<Slot name="hihOID"> <ValueList> <Value>2.16.840.1.113883.13.34.110.2.100.1</Value> </ValueList> </Slot>	R	R
3	senderOID	Sender OID represents the sender Organization ID. This will be a CMS-issued OID. Length: 35 (Alphanumeric)	<Slot name="senderOID"> <ValueList> <Value>2.16.840.1.113883.13.34.110.2.100.999.1</Value> </ValueList> </Slot>	R	N/A
4	totalNumberOfDocuments	Total number of documents received from the RC. Length: 2	<Slot name="totalNumberOfDocuments"> <ValueList> <Value>2</Value> </ValueList> </Slot>	R	R
5	Name/LocalizedString	The name of the localized string indicates the type of the request	<LocalizedString value="eMDR Letters"/>	R	R
6	Description/LocalizedString	The name of the localized string indicates the type of request	<LocalizedString value="eMDR Letters"/>	R	R

S. No.	XDR Submission Set Metadata Attribute	Definition	Example	eMDR (Pre-Pay/ Post-Pay) R-Required O-Optional	eMDR Report (Required metadata)
7	contentTypeCode	The ContentTypeCode identifies the Line of Business (LOB) for which the RC is sending the submission request. The eMDR pre-pay Content Type Code is 1.5 and the eMDR Post-Pay and Post-Pay-Other Content Type Code is 1.6	<ns2:Classification id="cl09" classificationScheme="urn:uuid:aa543740-bdda-424e-8c96-df4873be8500" classifiedObject="SubmissionSet01" nodeRepresentation="2.16.840.1.113883.13.34.10.1.1000.1"> <ns2:Slot name="contentTypeCode"> <ns2:ValueList> <ns2:Value>1.6</ns2:Value> </ns2:ValueList> </ns2:Slot> <ns2:Name> <ns2:LocalizedString xml:lang="en-US" charset="UTF-8" value="eMDR Letters"/> </ns2:Name> </ns2:Classification>	R	R
8	providerNPI	Provider NPI is a 10-digit number.	<Slot name="providerNPI"> <ValueList> <Value>1234567890</Value> </ValueList> </Slot>	R	N/A
9	eMDRType	Allowed eMDRType values: 1. Pre-Pay 2. Post-Pay 3. Post-Pay-Other	<Slot name="eMDRType"> <ValueList> <Value>Post-Pay-Other</Value> </ValueList> </Slot>	R	R
10	letterID	The letterID is an alphanumeric identifier with a maximum length of 60 characters.	<Slot name="letterID"> <ValueList> <Value>MCS123458</Value> </ValueList> </Slot>	R	N/A

S. No.	XDR Submission Set Metadata Attribute	Definition	Example	eMDR (Pre-Pay/ Post-Pay) R-Required O-Optional	eMDR Report (Required metadata)
11	esMDTransactionId	The Transaction ID that esMD sent or associated with each of the eMDR submission.	<pre><ns2:Slot xmlns:ns2="urn:oasis:names:tc:ebxml-regrep:xsd:rim:3.0" name="esMDTransactionId"> <ns2:ValueList> <ns2:Value>KTP000002005443</ns2:Value> </ns2:ValueList> </ns2:Slot></pre>	R	N/A

4.2.1 XDR Document Metadata Information (eMDR)

Table 3: Document Metadata Information defines the list of key document attributes, representation, and usage (i.e., required or optional). The intent is to provide the key document attributes in the request to identify the type of eMDR healthcare document being transported to the HIH such as its confidentiality, size, classification, etc.

Table 3: Document Metadata Information

S. No.	XDR Submission Set Metadata Attribute	Definition	Example	R-Required O-Optional
1	id	ExtrinsicObject ID should be the same as the document ID.	<pre><ExtrinsicObject id="Document02" objectType="urn:uuid:7edca82f-054d-47f2-a032-9b2a5b5186c1" mimeType="application/pdf"></pre>	R
2	mimeType	Indicates the type of the document	<pre><ExtrinsicObject id="Document02" objectType="urn:uuid:7edca82f-054d-47f2-a032-9b2a5b5186c1" mimeType="application/pdf"></pre>	R

S. No.	XDR Submission Set Metadata Attribute	Definition	Example	R-Required O-Optional
3	creationTime	Represents the esMD creation time. creationTime format must be yyyymmddhhmmss and the length is 14 characters	<Slot name="creationTime"> <ValueList> <Value>20160924082045</Value> </ValueList> </Slot>	R
4	size	Size in bytes of the C62 attachment byte stream that was provided through the request. Length of the letter ID is 25 (Alphanumeric).	<Slot name="size"> <ValueList> <Value>1024000</Value> </ValueList> </Slot>	R
5	languageCode	Specifies the human language of the character data in the document. The values of the attribute are language identifiers as described by Internet Engineering IETF RFC 3066.	<Slot name="languageCode"> <ValueList> <Value>en-us</Value> </ValueList> </Slot>	R
6	hash	Hash key of the XDR payload – C62 Document attachment based on the SHA1 Hash Algorithm.	<urn4:Slot name="hash"> <urn4:ValueList> <urn4:Value>ad18814418693512b767676006a21d8ec7291e84</urn4:Value> </urn4:ValueList> </urn4:Slot>	R
7	formatCode	Globally unique code for specifying the format of the document. For example, the format code for esMD is HITSP C62 urn:hitsp:c62:cda:pdf/urn:hitsp:c62:cda:xml	<Slot name="formatCode"> > <ValueList> <Value>1</Value> </ValueList> </Slot>	R

S. No.	XDR Submission Set Metadata Attribute	Definition	Example	R-Required O-Optional
8	healthcareFacilityTypeCode	Represents the type of organizational or provider setting of the claim or clinical encounters during which the documented act occurred.	<pre><Slot name="healthcareFacilityTypeCode"> <ValueList> <Value>3</Value> </ValueList> </Slot> <Name> <LocalizedString value="eMDR Letters "/> </Name></pre>	R
9	classCode	Specifies the particular kind of document.	<pre><Slot name="classCode"> <ValueList> <Value>1</Value> </ValueList> </Slot></pre>	R
10	confidentialityCode	Specifies the level of confidentiality of the document. For esMD, the value is always 'V'.	<pre><Slot name="confidentialityCode"> <ValueList> <Value>V</Value> </ValueList> </Slot> <Name> <LocalizedString value="VeryRestricted"/> </Name></pre>	R

4.2.2 Clinical Document Information (eMDR)

Table 4: Clinical Document Information defines the clinical document metadata data specification and the usage of appropriate HITSP template, depending on the type of C62 payload attachment.

Table 4: Clinical Document Information

S. No.	Clinical Document Metadata Attribute	Definition	Example	R-Required O-Optional
1	ClinicalDocument/typeld	Fixed, per CDA version in use.	<typeld extension="POCD_HD000040" root="2.16.840.1.113883.1.3"/>	R
2	ClinicalDocument/templated	The root attribute will contain the OID, '2.16.840.1.113883.3.88.11.62.1', to indicate the type of document is an XDR document.	<templated root="2.16.840.1.113883.10.20.3" assigningAuthorityName="CDT General Header Constraints"/> <templated root="1.3.6.1.4.1.19376.1.5.3.1.1.1" assigningAuthorityName="IHE Medical Document"/> <templated root="1.3.6.1.4.1.19376.1.2.20" assigningAuthorityName="IHE Scanned Document"/> <templated root="2.16.840.1.113883.3.88.11.62.1" assigningAuthorityName="HITSP Unstructured Document"/>	R
3	ClinicalDocument/id	The root attribute will contain the OID, which represents the unique instance identifier of a clinical document. This is an esMD-generated unique identifier.	<id root="eab8765b-1424-47cc-9495-ddc934cf5f5d"/>	R
4	ClinicalDocument/code	Values for this code are dictated by the CDA R2 documentation, but are permitted to extend to fit the particular use case. Attributes code@code and code@codeSystem will be present. Entered by the operator or can be taken from the scanned content.	<code="34133-9" codeSystem="2.16.840.1.113883.6.1" codeSystemName="LOINC" displayName="eMDR Letters"/>	O
5	ClinicalDocument/title	This will be present if known. Entered by operator or can be taken from the scanned content.	<title>eMDR Letters</title>	R

S. No.	Clinical Document Metadata Attribute	Definition	Example	R-Required O-Optional
6	ClinicalDocument/confidentialityCode	Assigned by the operator in accordance with the scanning facility policy. The notion or level of confidentiality in the header may not be the same as that in the Affinity Domain, but in certain cases could be used to derive a confidentiality value among those specified by the Affinity Domain. Attributes confidentialityCode@code and confidentialityCode@codeSystem will be present. Assigned by the operator at the scan time.	<pre><confidentialityCode code="V" codeSystem="2.16.840.1.113883.5.25" codeSystemName="Confidentiality" displayName="Very Restricted"/></pre>	R
7	ClinicalDocument/effectiveTime	Denotes the time at which the original content was scanned. Signifies the document creation time, when the document first came into being. At a minimum, the time will be precise to the day and will include the time zone offset from Greenwich Mean Time (GMT).	<pre><effectiveTime value="20050329224411+0500"/></pre>	R
8	ClinicalDocument/languageCode	In accordance with the HL7 CDA R2 documentation, this element specifies the human language of character data. Entered by the operator.	<pre><languageCommunication> <templateId root='1.3.6.1.4.1.19376.1.5.3.1.2.1'> <languageCode code='en-US'> </languageCommunication></pre>	R

S. No.	Clinical Document Metadata Attribute	Definition	Example	R-Required O-Optional
9	ClinicalDocument/recordTarget	<p>Contains identifying information about the patient concerned in the original content.</p> <p>Taken from scanned content and supplemented by the operator.</p>	<pre> <recordTarget> <patientRole> <id extension="12345" root="2.16.840.1.113883.3.933"/> <addr> <streetAddressLine>NA</streetAddressLine> <city>NA</city> <state>NA</state> <postalCode>NA</postalCode> <country>NA</country> </addr> <patient> <name> <prefix>NA</prefix> <given>NA</given> <family>NA</family> </name> <administrativeGenderCode code="F" codeSystem="2.16.840.1.113883.5.1"/> <birthTime value=""/> </patient> </patientRole> </recordTarget> </pre>	R

S. No.	Clinical Document Metadata Attribute	Definition	Example	R-Required O-Optional
10	ClinicalDocument/author/assignedAuthor/assignedPerson	<p>Represents the author of the original content. It can also 1040 encode the original author's institution in the sub-element-represented organization. Information regarding the original author and institution should be included, if it is known. Taken from scanned content and supplemented by the operator. This is the original author.</p>	<pre> <author> <templateId root="1.3.6.1.4.1.19376.1.2.20.1"/> <assignedAuthor> <id extension="11111111" root="1.3.5.35.1.4436.7"/> <assignedPerson> <name> <prefix>NA</prefix> <given>NA</given> <family>NA</family> <suffix>NA</suffix> </name> </assignedPerson> </representedOrganization> <name>NA</name> </representedOrganization> </assignedAuthor> </author> </pre>	R

S. No.	Clinical Document Metadata Attribute	Definition	Example	R-Required O-Optional
11	ClinicalDocument/author/assignedAuthor/authoringDevice	<p>Represents the scanning device and software used to produce the scanned content.</p> <p>Can be computed or fixed based on the scanning device and software.</p> <p>This is the information about the scanning device.</p>	<pre> <author> <templateId root="1.3.6.1.4.1.19376.1.2.20.2"/> <time value="20050329224411+0500"/> <assignedAuthor> <id root="1.3.6.4.1.4.1.2835.2.1234"/> <assignedAuthoringDevice> <code code="CAPTURE" displayName="Image Capture" codeSystem=" 1.2.840.10008.2.16.4" /> <manufacturerModelName>NA</manufacturer ModelName> <softwareName>NA</softwareName> </assignedAuthoringDevice> <representedOrganization> <id root="1.3.6.4.1.4.1.2835.2"/> <name>SOME Scanning Facility</name> <addr> <streetAddressLine>NA</streetAddressLine> <city>NA</city> <state>NA</state> <postalCode>NA</postalCode> <country>NA</country> </addr> </representedOrganization> </assignedAuthor> </author> </pre>	R

S. No.	Clinical Document Metadata Attribute	Definition	Example	R-Required O-Optional
12	ClinicalDocument/dataEnterer	This element represents the information about the scanner operator.	<pre> <dataEnterer> <templated root="1.3.6.1.4.1.19376.1.2.20.3"/> <time value="20050329224411+0500"/> <assignedEntity> <id extension="2222222" root="1.3.6.4.1.4.1.2835.2"/> <assignedPerson> <name> <prefix>NA.</prefix> <given>NA</given> <family>NA</family> </name> </assignedPerson> </assignedEntity> </dataEnterer> </pre>	R
13	ClinicalDocument/custodian	Represents the RC from which the document originates and that is in charge of maintaining the document. The custodian is the steward that is entrusted with the care of the document. Every CDA document has exactly one custodian. In most cases, this will be the scanning facility.	<pre> <custodian typeCode="CST"> <assignedCustodian classCode="ASSIGNED"> <representedCustodianOrganization classCode="ORG" determinerCode="INSTANCE"> <id root="1.300011"/> <name>Sender Name</name> <telecom use="WP" value="(555)555-5500"/> <addr> <streetAddressLine>Sender Address</streetAddressLine> <city>Sender City</city> <state>Sender State</state> <postalCode>Sender Zip Code</postalCode> <country/> </addr> </representedCustodianOrganization> </assignedCustodian> </custodian> </pre>	R

S. No.	Clinical Document Metadata Attribute	Definition	Example	R-Required O-Optional
14	ClinicalDocument/documentationOf/serviceEvent/effectiveTime	Used to encode the date/time range of the original content. If the original content is representative of a single point in time, the endpoints of the date/time range will be the same. Information regarding the date/time range should be included, if known. In many cases this must be supplied by the operator. Denotes the time/date range of the original content.	<pre> <documentationOf> <serviceEvent > <effectiveTime> <low value="19800127"/> <high value="19990522"/> </effectiveTime> </serviceEvent> </documentationOf> </pre>	R
15	ClinicalDocument/component/nonXMLBody	The scanned/base64 encoded content (PDF or XML file).	N/A	R

4.3 eMDR (Post-Pay-Other) Interface

This section describes the defined eMDR (Post-Pay-Other) XML structure, elements, data type, and format. The eMDR information will be furnished in the defined XML structure, wrapped in the clinical documentation, and transmitted to the HIH as an attachment.

4.3.1 eMDR Post-Pay-Other Request

Figure 2: eMDR (Post-Pay-Other) Request Schema (XML) and Table 5: eMDR (Post-Pay-Other) Request Data provide details of the eMDR request from the RCs to the HIH via esMD.

Figure 2: eMDR (Post-Pay-Other) Request Schema (XML)

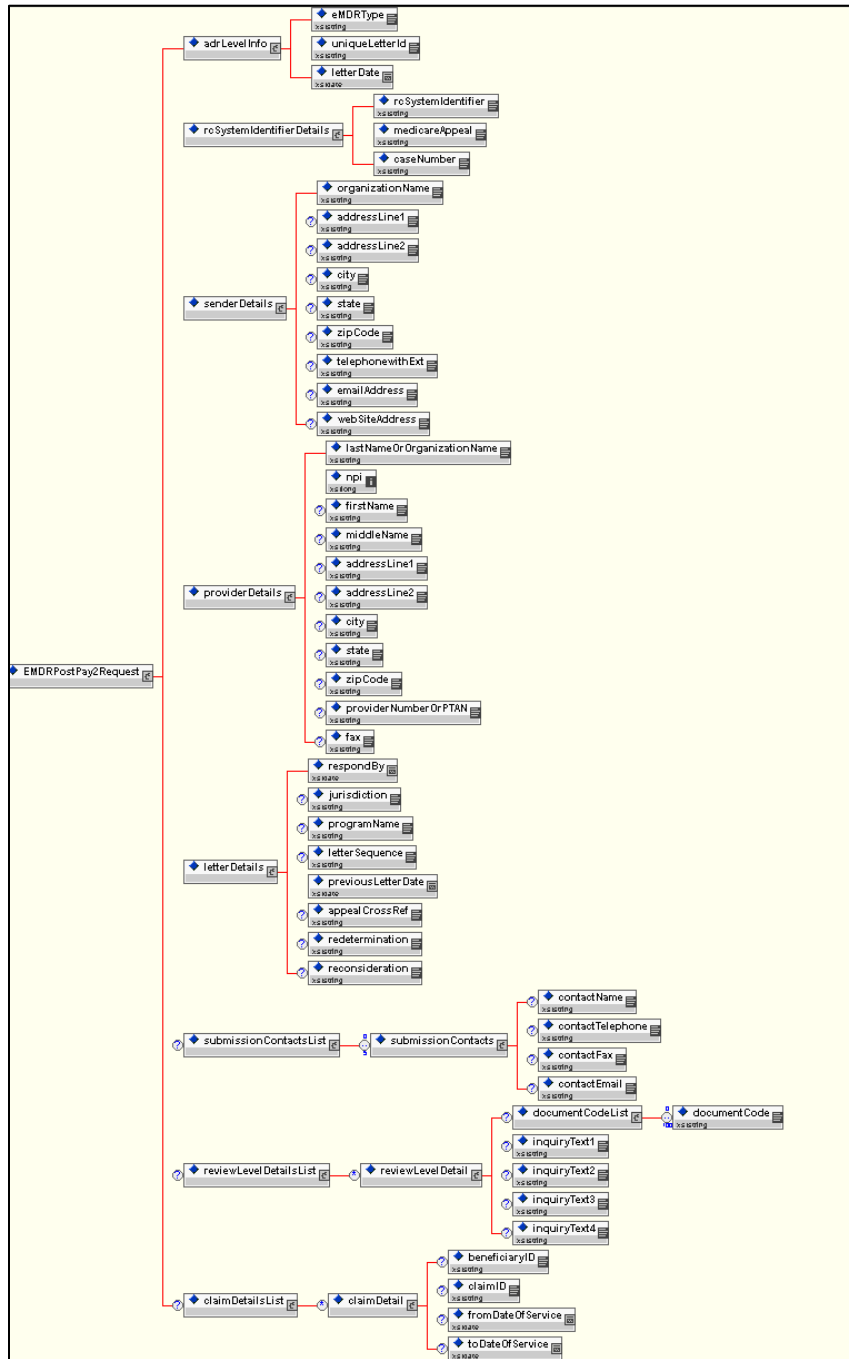


Table 5: eMDR (Post-Pay-Other) Request Data

Element	Child Element	Type	Usage R - Required S - Situational O - Optional	Comments
adrLevelInfo	eMDRType	string(8)	R	EMDRRequest is a root element. The eMDRType can be POST-PAY-OTHER.
adrLevelInfo	uniqueLetterId	String(6 Report0)	R	Example: MCSB01
adrLevelInfo	letterDate	date	R	Format: YYYY-MM-DD Example: 2019-01-25
rcSystemIdentifierDetails	rcSystemIdentifier	string(60)	R	N/A
rcSystemIdentifierDetails	medicareAppeal	string(60)	O	N/A
rcSystemIdentifierDetails	caseNumber	string(60)	O	N/A
senderDetails	organizationName	string(100)	R	The sender details and its child element will be present only if the RC sending the eMDR is different from the RC to whom the ADR Response must be sent by the Provider.
senderDetails	addressLine1	string(75)	O	N/A
senderDetails	addressLine2	string(75)	O	N/A
senderDetails	city	string(50)	O	N/A
senderDetails	state	string(2)	O	N/A
senderDetails	zipCode	string(10)	O	Example: 21244 or 212441234
senderDetails	telephonewithExt	numeric(18)	O	N/A
senderDetails	emailAddress	string(80)	O	N/A
senderDetails	webSiteAddress	String(80)	O	N/A
providerDetails	firstName	string(50)	O	N/A
providerDetails	middleName	string(30)	O	N/A
providerDetails	lastNameOrOrganizationName	string(100)	R	N/A
providerDetails	addressLine1	string(75)	R	N/A
providerDetails	addressLine2	string(75)	O	N/A
providerDetails	city	string(50)	R	N/A
providerDetails	state	string(2)	R	N/A
providerDetails	zipCode	string(10)	R	N/A
providerDetails	providerNumberOrPTAN	string(15)	O	N/A
providerDetails	npi	numeric(10)	R	N/A
providerDetails	fax	string(10)	O	N/A

Element	Child Element	Type	Usage R - Required S - Situational O - Optional	Comments
letterDetails	respondBy	date	R	YYYY-MM-DD
letterDetails	jurisdiction	string(50)	R	Examples: QIO Area 1 RAC Region 1 UPIC Mid-Western
letterDetails	programName	string(10)	R	Example: Part A, Part B, DME, HHH
letterDetails	letterSequence	string(30)	O	
letterDetails	previousLetterDate	date		YYYY-MM-DD
letterDetails	appealCrossRef	string(60)	O	
letterDetails	redetermination	string(80)	O	
submissionCon tactsList	contactName	string(100)	O	N/A
submissionCon tactsList	contactTelephone	string(18)	O	N/A
submissionCon tactsList	contactFax	string(12)	O	N/A
submissionCon tactsList	contactEmail	string(100)	O	N/A
reviewLevelDetail sList	reviewLevelDetail	NA	O	reviewLevel (1...*) repeating times.
reviewLevelDet ail	documentCodeList	NA	O	reviewLevel (1...100) repeating times. Example: 00001800001700003900 001
documentCode List	documentCode	string(24)	O	N/A
reviewLevelDet ail	inquiryText1	string(1000)	O	N/A
reviewLevelDet ail	inquiryText2	string(1000)	O	N/A
reviewLevelDet ail	inquiryText3	string(1000)	O	N/A
reviewLevelDet ail	inquiryText4	string(1000)	O	N/A
claimDetailsList	claimDetail	N/A	O	claimSetLevel(0...*) repeating times.
claimDetail	claimID	string(25)	O	N/A
claimDetail	beneficiaryID	string(12)	O	N/A
claimDetail	fromDateOfService	date	O	startDateOfService Format: YYYY-MM-DD

Element	Child Element	Type	Usage R - Required S - Situational O - Optional	Comments
claimDetail	toDateOfService	date	O	endDateOfService Format: YYYY-MM-DD

4.3.2 eMDR Report

Figure 3: eMDR-Report Request Schema (XML) depicts the XML structure and Table 6: eMDR Report Data provides the details of the structured report contents. The report may consist of one or more transaction details.

Figure 3: eMDR-Report Request Schema (XML)

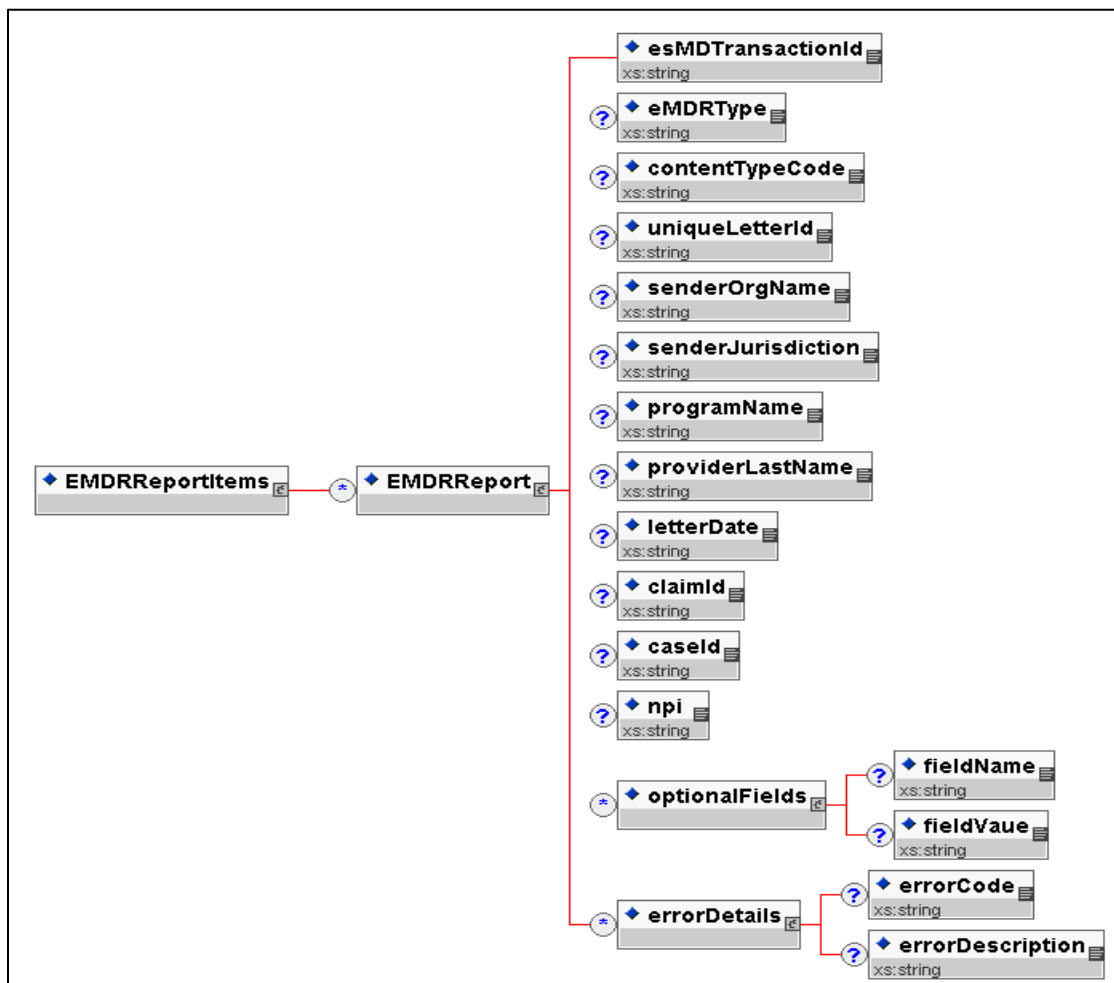


Table 6: eMDR Report Data

Element	Child Element	Type	Usage R - Required S - Situational O - Optional	Comments
EMDRReport	esMDTransactionId	string	R	EMDRReportItems is the root element. EMDRReport repeats (0...*) times.
EMDRReport	eMDRType	string	O	Example: PRE-PAY POST-PAY POST-PAY-OTHER
EMDRReport	contentTypeCode	string	O	Example: 1.5, 1.6
EMDRReport	uniqueLetterId	string	O	N/A
EMDRReport	senderOrgName	string	O	N/A
EMDRReport	senderJurisdiction	string	O	N/A
EMDRReport	programName	string	O	N/A
EMDRReport	providerLastName	string	O	N/A
EMDRReport	letterDate	string	O	N/A
EMDRReport	claimId	string	O	N/A
EMDRReport	caselId	string	O	N/A
EMDRReport	npi	string	O	N/A
optionalFields	fieldName	string	O	For future expansion
optionalFields	fieldValue	string	O	For future expansion
errorDetails	errorCode	string	R	N/A
errorDetails	errorDescription	string	R	N/A

4.3.3 Provider Delivery Acknowledgment

The HIH delivers the eMDR (Post-Pay-Other) to the respective providers, who are required to send the delivery confirmation to esMD using the XDR Acknowledgment object (i.e., RespondingGateway_ProvideAndRegisterDocumentSetResponseRequest). esMD sends the “Pickup Notification” to the HIH in a similar manner.

Table 7: XDR Provide and Register Document Set Response outlines the slot information that is sent to esMD.

Table 7: XDR Provide and Register Document Set Response

S. No.	XDR RegistryResponse Slot Name	Definition	Example
1	esMDTransactionId	The Transaction ID that esMD sent or associated with each of the eMDR submission.	<pre><ns2:Slot xmlns:ns2="um:oasis:names:tc:eb xml-regrep:xsd:rim:3.0" name=" esMDTransactionId"> <ns2:ValueList> <ns2:Value>KQM000002715441</ ns2:Value> </ns2:ValueList> </ns2:Slot></pre>
2	esMDToHIHDeliveryTime Stamp	The timestamp format is yyyy-MM-ddTHH:mm:ss.SSS-UTC	<pre><ns2:Slot xmlns:ns2="um:oasis:names:tc:eb xml-regrep:xsd:rim:3.0" name=" esMDToHIHDeliveryTime Stamp"> <ns2:ValueList> <ns2:Value>2018-05- 03T11:33:50.510- 04:00</ns2:Value> </ns2:ValueList> </ns2:Slot></pre>
3	HIHToProviderDeliveryTi meStamp	The timestamp format is yyyy-MM-ddTHH:mm:ss.SSS-UTC	<pre><ns2:Slot xmlns:ns2="um:oasis:names:tc:eb xml-regrep:xsd:rim:3.0" name=" HIHToProviderDeliveryTime Stamp "> <ns2:ValueList> <ns2:Value>2018-05- 03T11:33:51.518- 04:00</ns2:Value> </ns2:ValueList> </ns2:Slot></pre>

4.4 Communication Interface and Protocol Specification

This section provides details of the interface-level essential artifacts required for processing eMDR (Post-Pay-Other) requests that are enveloped and sent over the CONNECT eHealth exchange using the XDR specification.

4.4.1 esMD Interface-Oriented Web Service Endpoints

The initiating HIH and the receiving esMD (and vice versa) gain or share access to their secure CONNECT gateways using the unique endpoint URLs exposed publicly over the web. Table 8: Web Service Details describes the XDR real-time transaction request and deferred response endpoint information that each trading partner participating in XDR must disclose for exchanging additional supporting documentation and acknowledgements.

Table 8: Web Service Details

Service Name	Endpoint	Description
XDRRequest – Request	https://xx.xx.xx.xxx:xxxx/Gateway/DocumentSubmission/2_0/NhinService/XDRRequest_Service	NwHIN - Used for communication between HIHs and the esMD gateway
XDRResponse – Response	https://xx.xx.xxx.xx:xxxx/Gateway/DocumentSubmission/2_0/NhinService/XDRResponse_Service	NwHIN - Used for communication between HIHs and the esMD gateway while sending deferred delivery notification to esMD.

4.5 MicroStrategy Report

4.5.1 Reconciliation Report

The esMD system will show data for post-pay-other submission received by either the HIHs or RCs on MR101 (Excel) and MR102 (Comma Separated Values (CSV)) reports. See Figure 4: (MR101) Reconciliation Report.

4.5.2 eMDR Failure Report

The MR115 eMDR transaction failure report is a MicroStrategy report, which contains the eMDR(Pre-Pay, Post-Pay, or Post-Pay-Other) information, that esMD fails to deliver to the HIH's. See Figure 5: (MR115) eMDR Transaction Failure Report for the sample layout of the report.

Figure 4: (MR101) Reconciliation Report

Transaction ID	Parent Transaction ID	Sender	Sender Type	Recipient	Recipient Type	Unique Letter ID	Submission Date	Content Type Code	CTC Description	Transaction Type	Claim ID
ACY000009516777	NA	TC 3 Test Review Contractor 3	RC	NA	NA	NA	8/2/2022 6:08:59 PM	1.6	eMDR Post-Pay-other	XDR-Electronic Letters Post Pay	NA
CNI000009516448	NA	TC 3 Test Review Contractor 3	RC	NA	NA	GN435639PPostPayEsmcheckpnr70ykkizgyes	7/29/2022 10:39:00 AM	1.6	eMDR Post-Pay-other	XDR-Electronic Letters Post Pay	NA
GYP000009516522	NA	TC 3 Test Review Contractor 3	RC	NA	NA	NA	7/29/2022 2:32:59 PM	1.6	eMDR Post-Pay-other	XDR-Electronic Letters Post Pay	NA
ITL000009516773	NA	TC 3 Test Review Contractor 3	RC	NA	NA	NA	8/2/2022 5:12:59 PM	1.6	eMDR Post-Pay-other	XDR-Electronic Letters Post Pay	NA
ITM000009516457	NA	TC 3 Test Review Contractor 3	RC	NA	NA	NA	7/29/2022 2:23:02 PM	1.6	eMDR Post-Pay-other	XDR-Electronic Letters Post Pay	NA

Figure 5: (MR115) eMDR Transaction Failure Report

esMD Transaction ID	Parent Transaction ID	Submission Date	Letter Date	Unique Letter ID	NPI	Health Information	Health Information Handler OID	Jurisdiction	Jurisdiction OIP	Review Contract	Batch	Provider Organization	PTAN	Content Type Code	EMDR T
BQS000009412522	NA	#####	11/10/2021	SG321325TSRIDEMOTES TING120B	1871089698	Test HIH	urn:oid:123.456.657.126	TC 3	urn:oid:2.16.840.1.113.883.13.34.110.1.999.3	Test Review Contractor 3	NA	Emard	NA	1.6	POST-PAY-other
MKP000009412432	NA	#####	11/10/2021	SG321325TSRIDEMOTES TING120A	1871089698	Test HIH	urn:oid:123.456.657.126	TC 3	urn:oid:2.16.840.1.113.883.13.34.110.1.999.3	Test Review Contractor 3	NA	Emard	NA	1.6	POST-PAY-other
PPC000009412519	NA	#####	11/10/2021	SG321325TSRIDEMOTES TING120	1871089698	Test HIH	urn:oid:123.456.657.126	TC 3	urn:oid:2.16.840.1.113.883.13.34.110.1.999.3	Test Review Contractor 3	NA	Emard	NA	1.6	POST-PAY-other
SYK000009412523	NA	#####	11/10/2021	SG321325TSRIDEMOTES TING120BD	1871089698	Test HIH	urn:oid:123.456.657.126	TC 3	urn:oid:2.16.840.1.113.883.13.34.110.1.999.3	Test Review Contractor 3	NA	Emard	NA	1.6	POST-PAY-other

5. Sample Files

The XML samples in the following figures are for illustrative purposes only and are meant to provide general structure of the data elements of the XML files that are sent as an attachment to the HIH.

Refer to the figures in this section as follows:

1. Figure 6: eMDR Post-Pay-Other Request XSD provides the formal contract of eMDR post-pay XML.
2. Figure 7: eMDR Post-Pay-Other Request XML provides the sample eMDR post-pay request XML.
3. Figure 8: eMDR Report XML provides the sample eMDR Report XML.
4. Figure 9: XDR Endpoint Configuration To Submit CMS esMD Gateway (v4.0 above) provides the configuration of the XDR endpoint.

Figure 6: eMDR Post-Pay-Other Request XSD

```
<?xml version="1.0" encoding="UTF-8"?>

<xs:schema xmlns:xs="http://www.w3.org/2001/XMLSchema"
  xmlns:tns="http://esmd.ois.cms.hhs.gov/v3/rc/esmd/emdr/postpay"
  targetNamespace="http://esmd.ois.cms.hhs.gov/v3/rc/esmd/emdr/postpay"
  elementFormDefault="qualified"
  attributeFormDefault="unqualified">

  <xs:element name="EMDRPostPay2Request">
    <xs:complexType>
      <xs:sequence>
        <xs:element name="adrLevelInfo">
          <xs:annotation>
            <xs:documentation>ADR Level
Information</xs:documentation>
          </xs:annotation>
          <xs:complexType>
            <xs:sequence>
              <xs:element name="eMDRType">
                <xs:annotation>
                  <xs:documentation>Indicates the
kind/type of eMDR</xs:documentation>
                </xs:annotation>
                <xs:simpleType>
                  <xs:restriction base="xs:string">
                    <xs:enumeration value="POST-PAY-
OTHER" />
                  </xs:restriction>
                </xs:simpleType>
              </xs:element>
              <xs:element name="uniqueLetterId">
                <xs:annotation>
                  <xs:documentation>It is an Identifier
assigned by the RC System to uniquely denote a given ADR transaction.
                </xs:documentation>
                </xs:annotation>
                <xs:simpleType>
```

```

        <xs:restriction base="xs:string">
            <xs:minLength value="1"/>
            <xs:maxLength value="60"/>
            <xs:pattern value="([a-zA-Z0-9]*)"/>
        </xs:restriction>
    </xs:simpleType>
</xs:element>
<xs:element name="letterDate" type="xs:date">
    <xs:annotation>
        <xs:documentation>Date affixed on the
ADR letter</xs:documentation>
    </xs:annotation>
</xs:element>
</xs:sequence>
</xs:complexType>
</xs:element>

<xs:element name="rcSystemIdentifierDetails">
    <xs:annotation>
        <xs:documentation>System Identifier assigned by the
RC, to indicate eMDR.</xs:documentation>
    </xs:annotation>
    <xs:complexType>
        <xs:sequence>
            <xs:element name="rcSystemIdentifier">
                <xs:annotation>
                    <xs:documentation>System Identifier
assigned by the RC system to assist and track all associated responses of
this ADR/eMDR. [MR #, Reference #, UCM#, Supplier #, OR any Other RC System
Identifier]</xs:documentation>
                </xs:annotation>
                <xs:simpleType>
                    <xs:restriction base="xs:string">
                        <xs:minLength value="1"/>
                        <xs:maxLength value="60"/>
                        <xs:pattern value="([a-zA-Z0-9]*)"/>
                    </xs:restriction>
                </xs:simpleType>
            </xs:element>
            <xs:element name="medicareAppeal">
                <xs:annotation>
                    <xs:documentation>Appeal # assigned by
RC System.</xs:documentation>
                </xs:annotation>
                <xs:simpleType>
                    <xs:restriction base="xs:string">
                        <xs:minLength value="0"/>
                        <xs:maxLength value="60"/>
                        <xs:pattern value="([a-zA-Z0-9]*)"/>
                    </xs:restriction>
                </xs:simpleType>
            </xs:element>
            <xs:element name="caseNumber">
                <xs:annotation>
                    <xs:documentation>It stands as the
prefix to the UCM system Case Number.</xs:documentation>
                </xs:annotation>
            </xs:element>
        </xs:sequence>
    </xs:complexType>
</xs:element>

```

```

        <xs:simpleType>
            <xs:restriction base="xs:string">
                <xs:minLength value="0"/>
                <xs:maxLength value="60"/>
                <xs:pattern value="[a-zA-Z0-9]*/>
            </xs:restriction>
        </xs:simpleType>
    </xs:element>
</xs:sequence>
</xs:complexType>
</xs:element>

<xs:element name="senderDetails">
    <xs:annotation>
        <xs:documentation>RC who is generating/creating the
ADR information package, to be sent to the Provider,
electronically.</xs:documentation>
    </xs:annotation>
    <xs:complexType>
        <xs:sequence>
            <xs:element name="organizationName">
                <xs:annotation>
                    <xs:documentation>Name of the
Organization to which the ADR Response needs to be sent by the
Provider.</xs:documentation>
                </xs:annotation>
                <xs:simpleType>
                    <xs:restriction base="xs:string">
                        <xs:minLength value="1"/>
                        <xs:maxLength value="100"/>
                    </xs:restriction>
                </xs:simpleType>
            </xs:element>
            <xs:element name="addressLine1" minOccurs="0">
                <xs:annotation>
                    <xs:documentation>First Address Line of
the RC, who is sending the ADR letter, to the Provider.</xs:documentation>
                </xs:annotation>
                <xs:simpleType>
                    <xs:restriction base="xs:string">
                        <xs:minLength value="0"/>
                        <xs:maxLength value="75"/>
                    </xs:restriction>
                </xs:simpleType>
            </xs:element>
            <xs:element name="addressLine2" minOccurs="0">
                <xs:annotation>
                    <xs:documentation>Second Address Line of
the RC, who is sending the ADR letter, to the Provider.</xs:documentation>
                </xs:annotation>
                <xs:simpleType>
                    <xs:restriction base="xs:string">
                        <xs:maxLength value="75"/>
                    </xs:restriction>
                </xs:simpleType>
            </xs:element>
            <xs:element name="city" minOccurs="0">

```



```

        <xs:annotation>
          <xs:documentation>City associated with
the RC address, who is sending the ADR letter, to the
Provider.</xs:documentation>
        </xs:annotation>
        <xs:simpleType>
          <xs:restriction base="xs:string">
            <xs:maxLength value="50"/>
          </xs:restriction>
        </xs:simpleType>
      </xs:element>
      <xs:element name="state" minOccurs="0">
        <xs:annotation>
          <xs:documentation>State associated with
the RC address, who is sending the ADR letter, to the
Provider.</xs:documentation>
        </xs:annotation>
        <xs:simpleType>
          <xs:restriction base="xs:string">
            <xs:maxLength value="2"/>
          </xs:restriction>
        </xs:simpleType>
      </xs:element>
      <xs:element name="zipCode" minOccurs="0">
        <xs:annotation>
          <xs:documentation>ZIP Code associated
with the RC address, who is sending the ADR letter, to the
Provider.</xs:documentation>
        </xs:annotation>
        <xs:simpleType>
          <xs:restriction base="xs:string">
            <xs:maxLength value="10"/>
          </xs:restriction>
        </xs:simpleType>
      </xs:element>
      <xs:element name="telephonewithExt"
minOccurs="0">
        <xs:annotation>
          <xs:documentation>Contact Telephone
Number of the Sender of the ADR, to facilitate Provider enquiry, as need
arise.</xs:documentation>
        </xs:annotation>
        <xs:simpleType>
          <xs:restriction base="xs:string">
            <xs:maxLength value="18"/>
          </xs:restriction>
        </xs:simpleType>
      </xs:element>
      <xs:element name="emailAddress" minOccurs="0">
        <xs:annotation>
          <xs:documentation>e-mail address
associated with the RC generating the eMDR</xs:documentation>
        </xs:annotation>
        <xs:simpleType>
          <xs:restriction base="xs:string">
            <xs:maxLength value="80"/>
          </xs:restriction>

```

```

        </xs:simpleType>
    </xs:element>
    <xs:element name="webSiteAddress" minOccurs="0">
        <xs:annotation>
            <xs:documentation>Website address link
of the Sender</xs:documentation>
        </xs:annotation>
        <xs:simpleType>
            <xs:restriction base="xs:string">
                <xs:maxLength value="80"/>
            </xs:restriction>
        </xs:simpleType>
    </xs:element>
</xs:sequence>
</xs:complexType>
</xs:element>

    <xs:element name="providerDetails">
        <xs:annotation>
            <xs:documentation>Provider to whom the intended eMDR
is 'Addressed To'</xs:documentation>
        </xs:annotation>
        <xs:complexType>
            <xs:sequence>
                <xs:element name="lastNameOrOrganizationName">
                    <xs:annotation>
                        <xs:documentation>Last Name of the
Individual Provider OR Name of the Organization</xs:documentation>
                    </xs:annotation>
                    <xs:simpleType>
                        <xs:restriction base="xs:string">
                            <xs:minLength value="1"/>
                            <xs:maxLength value="100"/>
                        </xs:restriction>
                    </xs:simpleType>
                </xs:element>
                <xs:element name="npi">
                    <xs:annotation>
                        <xs:documentation>NPI of the eMDR
Registered Provider
                    </xs:documentation>
                    </xs:annotation>
                    <xs:simpleType>
                        <xs:restriction base="xs:long">
                            <xs:maxInclusive
value="9999999999"/>
                            <xs:minInclusive value="1"/>
                            <xs:pattern value="\d{10}"/>
                        </xs:restriction>
                    </xs:simpleType>
                </xs:element>
                <xs:element name="firstName" minOccurs="0">
                    <xs:annotation>
                        <xs:documentation>First Name of the
Provider</xs:documentation>
                    </xs:annotation>
                    <xs:simpleType>

```

```

        <xs:restriction base="xs:string">
            <xs:maxLength value="50"/>
        </xs:restriction>
    </xs:simpleType>
</xs:element>
<xs:element name="middleName" minOccurs="0">
    <xs:annotation>
        <xs:documentation>Middle Name of the
Provider</xs:documentation>
    </xs:annotation>
    <xs:simpleType>
        <xs:restriction base="xs:string">
            <xs:maxLength value="30"/>
        </xs:restriction>
    </xs:simpleType>
</xs:element>
<xs:element name="addressLine1" minOccurs="0">
    <xs:annotation>
        <xs:documentation>First Address Line of
the Provider, to whom the ADR letter is getting sent.</xs:documentation>
    </xs:annotation>
    <xs:simpleType>
        <xs:restriction base="xs:string">
            <xs:minLength value="0"/>
            <xs:maxLength value="75"/>
        </xs:restriction>
    </xs:simpleType>
</xs:element>
<xs:element name="addressLine2" minOccurs="0">
    <xs:annotation>
        <xs:documentation>Second Address Line of
the Provider, to whom the ADR letter is getting sent.</xs:documentation>
    </xs:annotation>
    <xs:simpleType>
        <xs:restriction base="xs:string">
            <xs:maxLength value="75"/>
        </xs:restriction>
    </xs:simpleType>
</xs:element>
<xs:element name="city" minOccurs="0">
    <xs:annotation>
        <xs:documentation>City associated with
the Provider address, to whom the ADR letter is getting
sent.</xs:documentation>
    </xs:annotation>
    <xs:simpleType>
        <xs:restriction base="xs:string">
            <xs:maxLength value="50"/>
        </xs:restriction>
    </xs:simpleType>
</xs:element>
<xs:element name="state" minOccurs="0">
    <xs:annotation>
        <xs:documentation>State associated with
the Provider address, to whom the ADR letter is getting
sent.</xs:documentation>
    </xs:annotation>

```

```

        <xs:simpleType>
            <xs:restriction base="xs:string">
                <xs:maxLength value="2"/>
            </xs:restriction>
        </xs:simpleType>
    </xs:element>
    <xs:element name="zipCode" minOccurs="0">
        <xs:annotation>
            <xs:documentation>ZIP Code associated
with the Provider address, to whom the ADR letter is getting
sent.</xs:documentation>
        </xs:annotation>
        <xs:simpleType>
            <xs:restriction base="xs:string">
                <xs:maxLength value="10"/>
            </xs:restriction>
        </xs:simpleType>
    </xs:element>
    <xs:element name="providerNumberOrPTAN"
minOccurs="0">
        <xs:annotation>
            <xs:documentation>Represents the
Provider Number OR PTAN</xs:documentation>
        </xs:annotation>
        <xs:simpleType>
            <xs:restriction base="xs:string">
                <xs:maxLength value="13"/>
            </xs:restriction>
        </xs:simpleType>
    </xs:element>
    <xs:element name="fax" minOccurs="0">
        <xs:annotation>
            <xs:documentation>Fax number of the
Provider / Provider Organization</xs:documentation>
        </xs:annotation>
        <xs:simpleType>
            <xs:restriction base="xs:string">
                <xs:maxLength value="10"/>
            </xs:restriction>
        </xs:simpleType>
    </xs:element>
</xs:sequence>
</xs:complexType>
</xs:element>

    <xs:element name="letterDetails">
        <xs:annotation>
            <xs:documentation>Represent few of the dynamic
elements that appears in the ADR letter</xs:documentation>
        </xs:annotation>
        <xs:complexType>
            <xs:sequence>
                <xs:element name="respondBy" type="xs:date">
                    <xs:annotation>
                        <xs:documentation>Date by which the
Response to the ADR is expected from the Provider, by the RC
                    </xs:documentation>
                </xs:element>
            </xs:sequence>
        </xs:complexType>
    </xs:element>

```

```

        </xs:annotation>
    </xs:element>
    <xs:element name="jurisdiction" minOccurs="0">
        <xs:annotation>
            <xs:documentation>Represents the
Jurisdiction or the Region to which the RC is associated.</xs:documentation>
        </xs:annotation>
        <xs:simpleType>
            <xs:restriction base="xs:string">
                <xs:maxLength value="50"/>
            </xs:restriction>
        </xs:simpleType>
    </xs:element>
    <xs:element name="programName" minOccurs="0">
        <xs:annotation>
            <xs:documentation>Indicates the Name of
the Program which is sending this ADR letter
        </xs:documentation>
        </xs:annotation>
        <xs:simpleType>
            <xs:restriction base="xs:string">
                <xs:maxLength value="10"/>
            </xs:restriction>
        </xs:simpleType>
    </xs:element>
    <xs:element name="letterSequence" minOccurs="0">
        <xs:annotation>
            <xs:documentation>Indicates whether this
is the First, or Subsequent iteration of sending the Letter.
        </xs:documentation>
        </xs:annotation>
        <xs:simpleType>
            <xs:restriction base="xs:string">
                <xs:maxLength value="30"/>
            </xs:restriction>
        </xs:simpleType>
    </xs:element>
    <xs:element name="previousLetterDate"
type="xs:date">
        <xs:annotation>
            <xs:documentation>Indicates the previous
letter date regarding the matter in question.
        </xs:documentation>
        </xs:annotation>
    </xs:element>
    <xs:element name="appealCrossRef" minOccurs="0">
        <xs:annotation>
            <xs:documentation>Indicates the Appeal #
Referenced by the Provider. (Is this correct?)
        </xs:documentation>
        </xs:annotation>
        <xs:simpleType>
            <xs:restriction base="xs:string">
                <xs:maxLength value="60"/>
            </xs:restriction>
        </xs:simpleType>
    </xs:element>

```

```

                                <xs:element name="redetermination"
minOccurs="0">
                                <xs:annotation>
                                  <xs:documentation>To indicate that this
eMDR is related to Retermination or a text associated to the redetermination
itself. (Yes, it is appeal related)
                                  </xs:documentation>
                                </xs:annotation>
                                <xs:simpleType>
                                  <xs:restriction base="xs:string">
                                    <xs:maxLength value="80"/>
                                  </xs:restriction>
                                </xs:simpleType>
                                </xs:element>
                                <xs:element name="reconsideration"
minOccurs="0">
                                <xs:annotation>
                                  <xs:documentation>To indicate that this
eMDR is related to Reconsideration or a text associated to the
reconsideration itself. (Yes, it is appeal related)
                                  </xs:documentation>
                                </xs:annotation>
                                <xs:simpleType>
                                  <xs:restriction base="xs:string">
                                    <xs:maxLength value="80"/>
                                  </xs:restriction>
                                </xs:simpleType>
                                </xs:element>
                              </xs:sequence>
                            </xs:complexType>
                          </xs:element>

                        <xs:element name="submissionContactsList" minOccurs="0">
                          <xs:annotation>
                            <xs:documentation>Submission Contacts List (can
repeated up to maximum of 5 times)</xs:documentation>
                          </xs:annotation>
                          <xs:complexType>
                            <xs:sequence>
                              <xs:element name="submissionContacts"
minOccurs="0" maxOccurs="5">
                                <xs:annotation>
                                  <xs:documentation>To provide Contact
Details of the Sender, to the Receiverr of the eMDR (Provider), for any
questions and clairification</xs:documentation>
                                </xs:annotation>
                                <xs:complexType>
                                  <xs:sequence>
                                    <xs:element name="contactName"
minOccurs="0">
                                        <xs:annotation>
                                          <xs:documentation>RLast,
First Name of the Contact at the RC organization (60, 28)</xs:documentation>
                                        </xs:annotation>
                                        <xs:simpleType>
                                          <xs:restriction
base="xs:string">

```

```

        <xs:maxLength
value="100"/>
        </xs:restriction>
    </xs:simpleType>
</xs:element>
<xs:element name="contactTelephone"
    <xs:annotation>
        <xs:documentation>Telephone
Number of the Contact
    </xs:documentation>
    </xs:annotation>
    <xs:simpleType>
        <xs:restriction
base="xs:string">
            <xs:maxLength
value="18"/>
            </xs:restriction>
        </xs:simpleType>
    </xs:element>
<xs:element name="contactFax"
    <xs:annotation>
        <xs:documentation>Fax Number
of the Contact
    </xs:documentation>
    </xs:annotation>
    <xs:simpleType>
        <xs:restriction
base="xs:string">
            <xs:maxLength
value="12"/>
            </xs:restriction>
        </xs:simpleType>
    </xs:element>
<xs:element name="contactEmail"
    <xs:annotation>
        <xs:documentation>Email
Address of the Contact
    </xs:documentation>
    </xs:annotation>
    <xs:simpleType>
        <xs:restriction
base="xs:string">
            <xs:maxLength
value="100"/>
            </xs:restriction>
        </xs:simpleType>
    </xs:element>
</xs:sequence>
</xs:complexType>
</xs:element>
</xs:sequence>
</xs:complexType>
</xs:element>

```

```

                <xs:element name="reviewLevelDetailsList" minOccurs="0">
                    <xs:annotation>
                        <xs:documentation>Review Level Details
List</xs:documentation>
                    </xs:annotation>
                    <xs:complexType>
                        <xs:sequence>
                            <xs:element name="reviewLevelDetail"
minOccurs="0" maxOccurs="unbounded">
                                <xs:annotation>
                                    <xs:documentation>Review Level
Details</xs:documentation>
                                </xs:annotation>
                                <xs:complexType>
                                    <xs:sequence>
                                        <xs:element name="documentCodeList"
minOccurs="0">
                                            <xs:complexType>
                                                <xs:sequence>
                                                    <xs:element
name="documentCode" minOccurs="0" maxOccurs="100">
                                                        <xs:annotation>
                                                            <xs:documentation>Code to indicate the document to be requested.
                                                                (Can Repeat upto
a limit of 100)</xs:documentation>
                                                        </xs:annotation>
                                                        <xs:simpleType>
                                                            <xs:restriction
base="xs:string">
                                                                <xs:maxLength value="24"/>
                                                            </xs:restriction>
                                                        </xs:simpleType>
                                                    </xs:element>
                                                </xs:sequence>
                                            </xs:complexType>
                                        </xs:element>
                                    <xs:element name="inquiryText1"
minOccurs="0">
                                        <xs:annotation>
                                            <xs:documentation>Represents
the possible query text, which needs to be sent to the Provider, at the
Document Code level. (field has been included for future
use.)</xs:documentation>
                                        </xs:annotation>
                                        <xs:simpleType>
                                            <xs:restriction
base="xs:string">
                                                <xs:maxLength
value="1000"/>
                                            </xs:restriction>
                                        </xs:simpleType>
                                    </xs:element>
                                <xs:element name="inquiryText2"
minOccurs="0">

```



```

                <xs:annotation>
                <xs:documentation>Represents
the possible query text, which needs to be sent to the Provider, at the
Document Code level. (field has been included for future
use.)</xs:documentation>
                </xs:annotation>
                <xs:simpleType>
                <xs:restriction
base="xs:string">
                <xs:maxLength
value="1000"/>
                </xs:restriction>
                </xs:simpleType>
</xs:element>
<xs:element name="inquiryText3"
minOccurs="0">
                <xs:annotation>
                <xs:documentation>Represents
the possible query text, which needs to be sent to the Provider, at the
Document Code level. (field has been included for future
use.)</xs:documentation>
                </xs:annotation>
                <xs:simpleType>
                <xs:restriction
base="xs:string">
                <xs:maxLength
value="1000"/>
                </xs:restriction>
                </xs:simpleType>
</xs:element>
<xs:element name="inquiryText4"
minOccurs="0">
                <xs:annotation>
                <xs:documentation>Represents
the possible query text, which needs to be sent to the Provider, at the
Document Code level. (field has been included for future
use.)</xs:documentation>
                </xs:annotation>
                <xs:simpleType>
                <xs:restriction
base="xs:string">
                <xs:maxLength
value="1000"/>
                </xs:restriction>
                </xs:simpleType>
</xs:element>
</xs:sequence>
</xs:complexType>
</xs:element>
</xs:sequence>
</xs:complexType>
</xs:element>
<xs:element name="claimDetailsList" minOccurs="0">
    <xs:annotation>
    <xs:documentation>Claim Details</xs:documentation>
    </xs:annotation>

```

```

        <xs:complexType>
            <xs:sequence>
                <xs:element name="claimDetail" minOccurs="0"
maxOccurs="unbounded">
                    <xs:annotation>
                        <xs:documentation>Represents the
elements which are represented at the Clam details. Note: Section Could be
repeated as many times as needed</xs:documentation>
                    </xs:annotation>
                    <xs:complexType>
                        <xs:sequence>

                            <xs:element name="beneficiaryID"
minOccurs="0">
                                <xs:annotation>
                                    <xs:documentation>Identifier
of the Beneficiary who is receiving the Service</xs:documentation>
                                </xs:annotation>
                                <xs:simpleType>
                                    <xs:restriction
base="xs:string">
                                        <xs:maxLength
value="12"/>
                                    </xs:restriction>
                                </xs:simpleType>
                            </xs:element>
                            <xs:element name="claimID"
minOccurs="0">
                                <xs:annotation>
                                    <xs:documentation>The Claim
Reference Number in CMS/RC system</xs:documentation>
                                </xs:annotation>
                                <xs:simpleType>
                                    <xs:restriction
base="xs:string">
                                        <xs:maxLength
value="23"/>
                                    </xs:restriction>
                                </xs:simpleType>
                            </xs:element>
                            <xs:element name="fromDateOfService"
type="xs:date" minOccurs="0">
                                <xs:annotation>
                                    <xs:documentation>From Date
of Service</xs:documentation>
                                </xs:annotation>
                            </xs:element>
                            <xs:element name="toDateOfService"
type="xs:date" minOccurs="0">
                                <xs:annotation>
                                    <xs:documentation>To Date of
Service</xs:documentation>
                                </xs:annotation>
                            </xs:element>
                        </xs:sequence>
                    </xs:complexType>

```

```

        </xs:element>
      </xs:sequence>
    </xs:complexType>
  </xs:element>
</xs:sequence>
</xs:complexType>
</xs:element>
</xs:schema>

```

Figure 7: eMDR Post-Pay-Other Request XML

```

<?xml version="1.0" encoding="utf-8"?>
<EMDRPostPay2Request>
  <adrLevelInfo>
    <eMDRType>POST-PAY-OTHER</eMDRType>
    <uniqueLetterId>U6556565665SM17668688</uniqueLetterId>
    <letterDate>11/16/2022</letterDate>
  </adrLevelInfo>
  <rcSystemIdentifierDetails>
    <rcSystemIdentifier>RC765326623</rcSystemIdentifier>
    <medicareAppeal>1152578678</medicareAppeal>
    <caseNumber>UCM2376674</caseNumber>
  </rcSystemIdentifierDetails>
  <senderDetails>
    <organizationName>Keebler, Halvorson and Murphy</organizationName>
    <addressLine1>28569 Conn Manors</addressLine1>
    <addressLine2>Quail valley</addressLine2>
    <city>Darionland</city>
    <state>RI</state>
    <zipCode>19308-4149</zipCode>
    <telephonewithExt>8887797477-5636</telephonewithExt>
    <emailAddress>CERTprovider@nciinc.com</emailAddress>
    <webSiteAddress>https://www.cms.gov/</webSiteAddress>
  </senderDetails>
  <providerDetails>
    <lastNameOrOrganizationName>Cartwright</lastNameOrOrganizationName>
    <npi>1932695756</npi>
    <firstName>Michael GWYNN</firstName>
    <middleName>PA, Co</middleName>
    <addressLine1>4240 Isabel Ports</addressLine1>
    <addressLine2>Hidden valley</addressLine2>
    <city>South Janelle</city>
    <state>ME</state>
    <zipCode>41025-7281</zipCode>
    <providerNumberOrPTAN>5443355343</providerNumberOrPTAN>
    <fax>8042618100</fax>
  </providerDetails>
  <letterDetails>
    <respondBy>11/16/2022</respondBy>
    <jurisdiction>UPIC Mid-Western</jurisdiction>
    <programName>PARTB</programName>
    <letterSequence>First</letterSequence>
    <previousLetterDate>11/16/2022</previousLetterDate>
  </letterDetails>
</EMDRPostPay2Request>

```

```

<appealCrossRef>RC7665665777</appealCrossRef>
<redetermination>Appeal 55427-544552</redetermination>
<reconsideration>Appeal 564546</reconsideration>
</letterDetails>
<submissionContactsList>
  <submissionContacts>
    <contactName>>Wiza - Harber</contactName>
    <contactTelephone>7666666666</contactTelephone>
    <contactFax>9877666666</contactFax>
    <contactEmail>Test1@CMS.gov</contactEmail>
  </submissionContacts>
</submissionContactsList>
<reviewLevelDetailsList>
  <reviewLevelDetail>
    <documentCodeList>
      <documentCode>10001800001700003</documentCode>
      <documentCode>100573</documentCode>
      <documentCode>100574</documentCode>
      <documentCode>100575</documentCode>
      <documentCode>100576</documentCode>
      <documentCode>100577</documentCode>
      <documentCode>100578</documentCode>
      <documentCode>100579</documentCode>
    </documentCodeList>
    <inquiryText1>A_123333</inquiryText1>
    <inquiryText2>A1_223333</inquiryText2>
    <inquiryText3>B1_7663653662</inquiryText3>
    <inquiryText4>B2_676456627673</inquiryText4>
  </reviewLevelDetail>
</reviewLevelDetailsList>
<claimDetailsList>
  <claimDetail>
    <beneficiaryID>BKSKIKK</beneficiaryID>
    <claimID>BCQWQLZNJXKFFQUMVEAF</claimID>
    <fromDateOfService>11/10/2022</fromDateOfService>
    <toDateOfService>11/16/2022</toDateOfService>
  </claimDetail>
</claimDetailsList>
</EMDRPostPay2Request>

```

Figure 8: eMDR Report XML

```

<?xml version="1.0" encoding="utf-8"?>
<ns0:EMDRReportItems xmlns:ns0 =
"http://esmd.ois.cms.hhs.gov/v2/esmd/emdr/report">
  <ns0:EMDRReport>
    <ns0:esMDTransactionId status =
"Failure">RSO000003841755</ns0:esMDTransactionId>
    <ns0:eMDRType>POST-PAY-OTHER</ns0:eMDRType>
    <ns0:contentTypeCode>1.6</ns0:contentTypeCode>
    <ns0:uniqueLetterId>874977157846</ns0:uniqueLetterId>
    <ns0:senderJurisdiction>JL</ns0:senderJurisdiction>
    <ns0:programName>HHH</ns0:programName>
    <ns0:providerLastName>McCarthy</ns0:providerLastName>
    <ns0:letterDate>2019-01-21-05</ns0:letterDate>

```

```

<ns0:claimId>1234567891478</ns0:claimId>
<ns0:npi>111111112</ns0:npi>
<ns0:errorDetails>
  <ns0:errorCode>ESMD_620</ns0:errorCode>
  <ns0:errorDescription>esMD failed to deliver
documents</ns0:errorDescription>
</ns0:errorDetails>
</ns0:EMDRReport>
<ns0:EMDRReport>
  <ns0:esMDTransactionId status =
"Failure">TPL000003841785</ns0:esMDTransactionId>
  <ns0:emDRType>POST-PAY-OTHER</ns0:emDRType>
  <ns0:contentTypeCode>1.6</ns0:contentTypeCode>
  <ns0:uniqueLetterId>874977157847</ns0:uniqueLetterId>
  <ns0:senderJurisdiction>JL</ns0:senderJurisdiction>
  <ns0:programName>HHH</ns0:programName>
  <ns0:providerLastName>McCarthy</ns0:providerLastName>
  <ns0:letterDate>2019-01-21-05</ns0:letterDate>
  <ns0:claimId>1234567891499</ns0:claimId>
  <ns0:npi>111111112</ns0:npi>
  <ns0:errorDetails>
    <ns0:errorCode>ESMD_621</ns0:errorCode>
    <ns0:errorDescription>The eMDR or ADR document(s) received from
RC failed esMD validation</ns0:errorDescription>
  </ns0:errorDetails>
</ns0:EMDRReport>
</ns0:EMDRReportItems>

```

Figure 9: XDR Endpoint Configuration To Submit CMS esMD Gateway (v4.0 above)

```

<businessEntity businessKey="uddi:nhincnode:2.16.840.1.113883.13.34.110.2">
  <name xml:lang="en">CMS VDC VAL Gateway</name>
  <businessServices>
    <!-- Document Submission XDR -->

    <businessService serviceKey="uddi:nhincnode:DocSubmission"
businessKey="uddi:testnhieonenode:2.16.840.1.113883.13.34.110.2">
      <name xml:lang="en">DocSubmission</name>
      <bindingTemplates>
        <bindingTemplate
bindingKey="uddi:nhincnode:DocSubmission"
serviceKey="uddi:nhincnode:DocSubmission">
          <accessPoint
useType="endPoint">https://207.37.82.83:443/Gateway/DocumentSubmission/1_1/D
ocumentRepositoryXDR_Service</accessPoint>
            <categoryBag>
              <keyedReference
tModelKey="uddi:nhin:versionofservice" keyName="" keyValue="1.1"/>
            </categoryBag>
          </bindingTemplate>
        </bindingTemplate>
      </bindingTemplates>
    </businessService>
  </businessServices>
</businessEntity>

```



```
        <accessPoint
useType="endPoint">https://207.37.82.83:443/Gateway/DocumentSubmission/1_1/N
hinService/XDRResponse_Service</accessPoint>
        <categoryBag>
            <keyedReference
tModelKey="uddi:nhin:versionofservice" keyName="" keyValue="1.1"/>
            </categoryBag>
        </bindingTemplate>
    </bindingTemplate>
bindingKey="uddi:nhincnode:DocSubmissionDeferredResp"
serviceKey="uddi:nhincnode:DocSubmissionDeferredResp">
    <accessPoint
useType="endPoint">https://207.37.82.83:443/Gateway/DocumentSubmission/2_0/N
hinService/XDRResponse_Service</accessPoint>
    <categoryBag>
        <keyedReference
tModelKey="uddi:nhin:versionofservice" keyName="" keyValue="2.0"/>
        </categoryBag>
    </bindingTemplate>
</bindingTemplates>
    <categoryBag>
        <keyedReference tModelKey="uddi:nhin:standard-
servicenames" keyName="DocSubmissionDeferredResp"
keyValue="DocSubmissionDeferredResp"/>
    </categoryBag>
    </businessService>
</businessServices>
</businessEntity>
```

Appendix A: Record of Changes

Table 9: Record of Changes

Version Number	Date	Author/Owner	Description of Change
1.0	12/09/2022	Venkata Gurram	Initial delivery for the April 2023 release

Appendix B: Acronyms

Table 10: Acronyms

Acronym	Literal Translation
ADR	Additional Documentation Request
CDA	Clinical Data Architecture
CERT	Comprehensive Error Rate Testing
CMS	Centers for Medicare & Medicaid Services
CR	Change Request
CSV	Comma Separated Values
DCF	Document Code File
eMDR	Electronic Medical Documentation Request
esMD	Electronic Submission of Medical Documentation
GMT	Greenwich Mean Time
HIH	Health Information Handler
HITSP	Healthcare Information Technology Standards Panel
HL7	Health Level Seven International
ID	Identifier
IETF	Internet Engineering Task Force
LOB	Line of Business
LOINC	Logical Observation Identifiers Names and Codes
NPI	National Provider Identifier
NPPES	National Plan and Provider Enumeration System
NwHIN	Healthway Nationwide Health Information Network
OID	Organizational Identifier
PDF	Portable Document Format
PHI	Protected Health Information
PROD	Production Environment
RC	Review Contractor
RFC	Request For Comments
QIC	Qualified Independent Contractor
RPF	Registered Provider File
SHA1	Secure Hash Algorithm 1
SLR	Structured Letter Record
SMRC	Supplemental Medical Review Contractor
SOAP	Simple Object Access Protocol
TLS	Transport Layer Security
TRC	Technical Release Changes
URL	Universal Resource Locator
UTC	Coordinated Universal Timestamp
XDR	Cross-Enterprise Document Reliable Interchange
XML	Extensible Markup Language
XSD	XML Schema Definition

Appendix C: Referenced Documents

Table 11: Referenced Documents

Document Name	Document Location and/or URL	Issuance Date
HIH Implementation Guide	TBD	02/07/2022