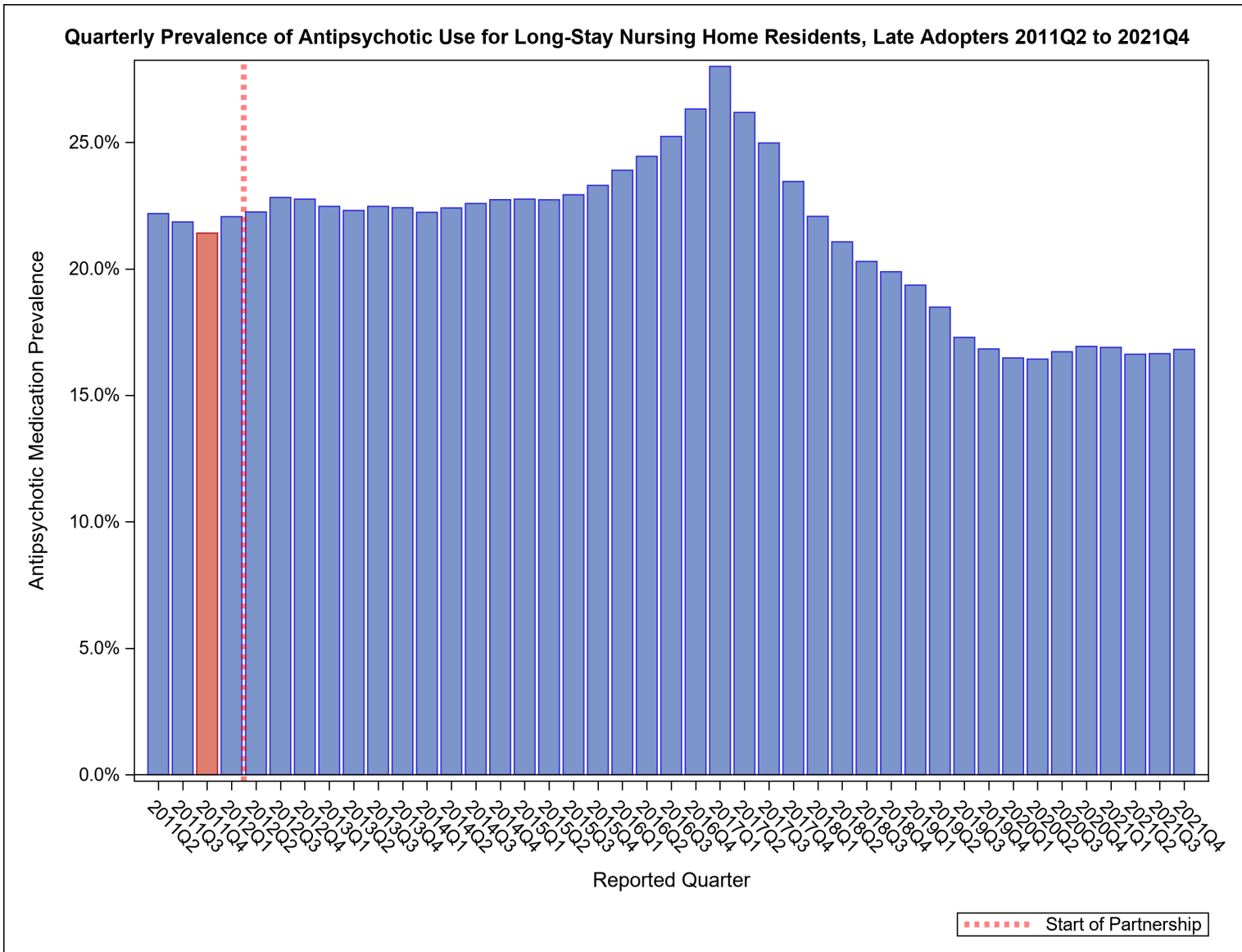


National Partnership to Improve Dementia Care in Nursing Homes: Late Adopter Data Report (April 2022)

This quarterly data report is specific to the progress of the late adopters. Nursing homes were identified as late adopters, based upon 2017Q1 data. These nursing homes continued to have high rates of antipsychotic medication use, showing very little change or increased rates from 2011Q4 to 2017Q1, and remaining above the 2017Q1 national average.

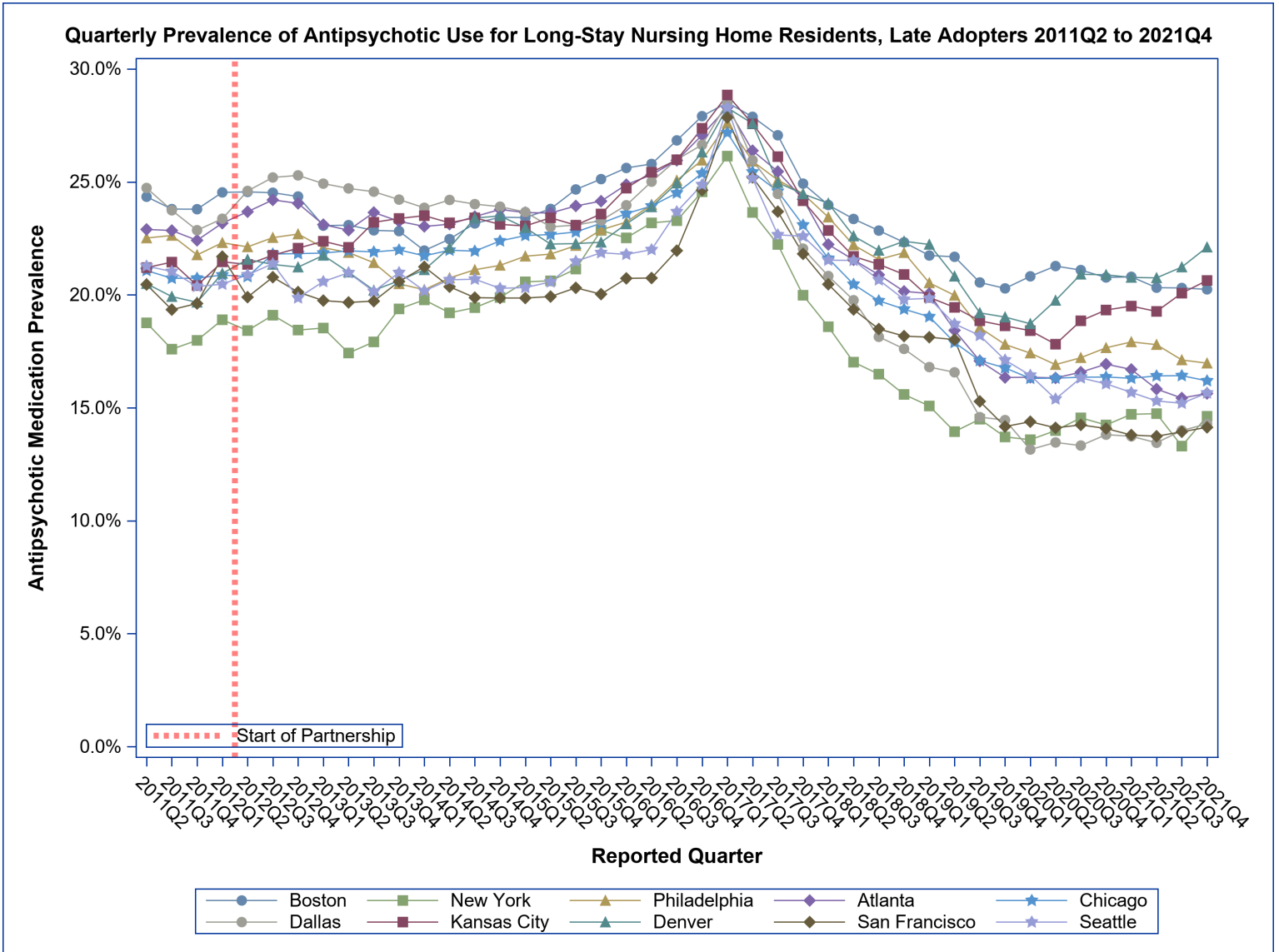
In 2011Q4, the baseline used for the National Partnership, 21.4 percent of long-stay nursing home residents, living in a nursing home identified as a late adopter, were receiving an antipsychotic medication; since then, there has been a decrease of 21.5 percent to a national prevalence, among late adopters, of 16.8 percent in 2021Q4. Since 2017Q1, when nursing homes were identified as late adopters, there has been a decrease of 40 percent.

For more information on the National Partnership, please send correspondence to dnh_behavioralhealth@cms.hhs.gov.



Source: CMS Quality Measure, based on MDS 3.0 data. For more information, see the MDS 3.0 Quality Measures Users Manual.

Quarterly Prevalence of Antipsychotic Use for Long-Stay Residents, Late Adopters, CMS Locations



Location	Facility Count	2011Q4	2017Q1	2018Q1	2019Q1	2020Q1	2020Q2	2020Q3	2020Q4	2021Q1	2021Q2	2021Q3	2021Q4	% point difference (2011Q4 - 2021Q4)	% change (2011Q4-2021Q4)	% point difference (2017Q1-2021Q4)	% change (2017Q1-2021Q4)
National	1508	21.4%	28.0%	22.1%	19.4%	16.5%	16.4%	16.7%	16.9%	16.9%	16.6%	16.6%	16.8%	-4.60	-21.5%	-11.19	-40.0%
Boston	83	23.8%	28.5%	24.0%	21.7%	20.8%	21.3%	21.1%	20.8%	20.8%	20.3%	20.3%	20.2%	-3.55	-14.9%	-8.26	-29.0%
New York	41	18.0%	26.1%	18.6%	15.1%	13.6%	14.0%	14.6%	14.2%	14.7%	14.7%	13.3%	14.6%	-3.36	-18.7%	-11.52	-44.1%
Philadelphia	145	21.8%	27.6%	23.4%	20.5%	17.4%	16.9%	17.2%	17.7%	17.9%	17.8%	17.1%	17.0%	-4.79	-22.0%	-10.62	-38.5%
Atlanta	290	22.4%	28.3%	22.2%	20.1%	16.4%	16.3%	16.6%	16.9%	16.7%	15.8%	15.4%	15.6%	-6.78	-30.2%	-12.67	-44.8%
Chicago	358	20.7%	27.2%	21.6%	19.0%	16.3%	16.3%	16.4%	16.4%	16.3%	16.4%	16.4%	16.2%	-4.54	-21.9%	-10.98	-40.4%
Dallas	218	22.9%	28.5%	20.8%	16.8%	13.2%	13.5%	13.3%	13.8%	13.7%	13.5%	14.0%	14.3%	-8.57	-37.5%	-14.23	-49.9%
Kansas City	198	20.4%	28.8%	22.8%	19.9%	18.4%	17.8%	18.9%	19.3%	19.5%	19.3%	20.1%	20.6%	0.22	1.1%	-8.21	-28.5%
Denver	66	19.7%	28.3%	24.1%	22.2%	18.7%	19.8%	20.9%	20.9%	20.8%	20.8%	21.2%	22.1%	2.44	12.4%	-6.17	-21.8%
San Francisco	58	19.6%	27.9%	20.5%	18.1%	14.4%	14.1%	14.2%	14.1%	13.8%	13.7%	13.9%	14.1%	-5.48	-27.9%	-13.72	-49.2%
Seattle	51	20.4%	28.3%	21.5%	19.8%	16.4%	15.4%	16.3%	16.1%	15.7%	15.3%	15.2%	15.7%	-4.72	-23.2%	-12.64	-44.7%

Quarterly Prevalence of Antipsychotic Use for Long-Stay Residents, Late Adopters, States

State Name	Facility Count	2011Q4	2017Q1	2018Q1	2019Q1	2020Q1	2020Q2	2020Q3	2020Q4	2021Q1	2021Q2	2021Q3	2021Q4	Rank for Variable_2021Q4	% point difference (2011Q4 - 2021Q4)	% change (2011Q4-2021Q4)	% point difference (2017Q1-2021Q4)	% change (2017Q1-2021Q4)
ALABAMA	31	22.8%	28.0%	24.8%	24.4%	17.5%	18.5%	19.7%	18.7%	19.7%	19.4%	18.2%	19.5%	35	-3.32	-14.6%	-8.49	-30.4%
ARIZONA	9	20.0%	28.3%	22.2%	15.5%	11.0%	10.1%	8.5%	9.6%	9.9%	9.8%	8.8%	10.1%	1	-9.90	-49.5%	-18.21	-64.3%
ARKANSAS	18	22.5%	25.9%	18.4%	15.7%	9.3%	9.1%	8.7%	8.3%	9.4%	9.7%	11.0%	11.3%	2	-11.10	-49.5%	-14.55	-56.2%
CALIFORNIA	42	19.1%	27.0%	19.0%	18.0%	13.5%	13.8%	14.3%	13.8%	13.5%	13.5%	13.4%	13.5%	7	-5.67	-29.6%	-13.51	-50.1%
COLORADO	15	16.4%	26.1%	24.6%	23.2%	19.9%	20.7%	22.8%	22.8%	22.4%	24.1%	24.4%	25.8%	48	9.40	57.2%	-0.29	-1.1%
CONNECTICUT	17	24.4%	27.6%	21.2%	20.7%	19.9%	21.7%	19.3%	20.6%	19.7%	18.4%	17.8%	18.3%	31	-6.07	-24.9%	-9.33	-33.7%
DELAWARE	3	21.5%	24.0%	14.2%	12.7%	14.6%	14.8%	13.9%	13.2%	13.6%	14.8%	12.4%	11.4%	3	-10.11	-47.0%	-12.58	-52.5%
FLORIDA	75	21.7%	27.2%	21.4%	20.1%	15.0%	15.2%	14.9%	14.9%	14.8%	14.2%	13.7%	12.2%	5	-9.03	-41.6%	-14.51	-53.4%
GEORGIA	31	24.6%	31.1%	25.2%	21.6%	19.0%	18.3%	18.6%	19.1%	19.7%	18.4%	19.2%	18.9%	33	-5.73	-23.3%	-12.19	-39.2%
HAWAII	1	30.0%	33.3%	0.0%	0.0%
IDAHO	12	21.3%	27.1%	22.5%	19.7%	15.9%	15.7%	17.0%	17.6%	15.9%	15.3%	14.1%	14.6%	14	-6.68	-31.4%	-12.51	-46.1%
ILLINOIS	93	21.5%	28.3%	23.9%	21.4%	18.8%	18.9%	18.7%	18.6%	19.1%	20.0%	19.4%	18.6%	32	-2.90	-13.5%	-9.67	-34.2%
INDIANA	51	21.8%	27.4%	22.4%	18.7%	16.4%	14.6%	14.5%	14.8%	14.7%	15.2%	14.2%	14.5%	12	-7.23	-33.2%	-12.83	-46.9%
IOWA	52	19.6%	27.7%	21.6%	21.3%	21.6%	21.2%	22.0%	22.1%	22.5%	22.5%	24.0%	22.5%	43	2.90	14.7%	-5.17	-18.7%
KANSAS	59	20.0%	29.1%	21.7%	14.9%	13.6%	13.7%	14.9%	15.6%	14.7%	14.6%	15.3%	15.5%	17	-4.46	-22.3%	-13.56	-46.6%
KENTUCKY	51	22.4%	28.1%	22.7%	21.4%	18.6%	17.7%	18.3%	18.7%	18.1%	15.8%	15.4%	15.6%	18	-6.80	-30.4%	-12.58	-44.7%
LOUISIANA	35	22.6%	28.6%	20.5%	14.5%	11.9%	13.0%	13.6%	13.5%	14.4%	12.6%	13.2%	16.0%	21	-6.65	-29.4%	-12.59	-44.1%
MAINE	12	22.7%	31.3%	25.7%	21.1%	24.7%	22.9%	20.9%	20.2%	22.1%	22.2%	22.2%	21.6%	39	-1.14	-5.0%	-9.65	-30.9%
MARYLAND	16	21.0%	26.0%	21.5%	16.8%	16.9%	17.5%	17.8%	18.7%	19.9%	21.1%	18.2%	18.2%	30	-2.83	-13.5%	-7.88	-30.3%
MASSACHUSETTS	30	25.3%	28.9%	25.7%	24.5%	22.9%	23.1%	23.7%	22.9%	23.3%	23.1%	23.6%	23.6%	45	-1.75	-6.9%	-5.32	-18.4%
MICHIGAN	44	19.6%	26.6%	21.6%	18.1%	14.6%	15.2%	15.8%	15.6%	15.1%	14.9%	15.6%	14.9%	15	-4.69	-24.0%	-11.76	-44.1%
MINNESOTA	34	18.4%	25.2%	17.8%	16.8%	15.9%	16.9%	18.1%	18.4%	19.0%	19.0%	21.4%	19.0%	34	0.56	3.0%	-6.26	-24.8%
MISSISSIPPI	25	25.8%	30.9%	26.4%	21.6%	21.4%	21.4%	20.5%	22.0%	21.1%	22.8%	21.7%	21.8%	40	-4.04	-15.7%	-9.17	-29.6%
MISSOURI	52	21.0%	28.8%	23.7%	20.9%	19.1%	18.3%	19.3%	19.7%	20.4%	19.8%	20.0%	22.0%	42	1.05	5.0%	-6.83	-23.7%
MONTANA	5	25.2%	30.0%	28.2%	24.2%	21.3%	20.7%	22.0%	23.2%	22.0%	20.7%	21.8%	21.3%	38	-3.93	-15.6%	-8.74	-29.1%
NEBRASKA	35	21.4%	30.1%	25.5%	24.2%	20.7%	18.9%	20.0%	20.7%	21.2%	21.0%	21.6%	23.6%	44	2.13	9.9%	-6.56	-21.8%
NEVADA	6	20.6%	32.3%	31.4%	25.9%	25.5%	22.0%	22.2%	22.8%	21.3%	20.7%	24.1%	23.9%	46	3.26	15.8%	-8.38	-26.0%
NEW HAMPSHIRE	10	21.1%	26.5%	19.6%	19.0%	18.6%	18.4%	20.2%	17.8%	18.4%	16.6%	17.1%	16.6%	25	-4.51	-21.4%	-9.99	-37.6%
NEW JERSEY	13	16.8%	24.6%	18.7%	16.5%	14.7%	16.1%	16.9%	14.6%	14.8%	14.8%	12.9%	15.2%	16	-1.53	-9.2%	-9.43	-38.3%
NEW MEXICO	11	20.5%	27.1%	21.7%	19.1%	14.8%	16.6%	16.2%	16.9%	17.5%	19.8%	22.1%	19.7%	37	-0.81	-4.0%	-7.38	-27.3%
NEW YORK	28	18.6%	26.8%	18.5%	14.4%	13.1%	13.0%	13.5%	14.1%	14.7%	14.7%	13.5%	14.4%	11	-4.21	-22.7%	-12.48	-46.5%
NORTH CAROLINA	31	20.6%	25.5%	17.4%	14.4%	11.3%	12.2%	12.0%	12.8%	11.9%	11.9%	12.9%	12.3%	4	-8.25	-40.0%	-13.19	-51.6%
NORTH DAKOTA	11	16.6%	26.9%	27.6%	25.9%	19.9%	20.1%	20.7%	21.4%	22.4%	20.6%	22.8%	25.3%	17	8.75	52.8%	-1.61	-6.0%
OHIO	106	21.6%	27.5%	20.7%	18.0%	14.2%	14.7%	14.7%	14.4%	14.0%	13.5%	13.4%	14.3%	10	-7.28	-33.7%	-13.20	-48.0%
OKLAHOMA	50	24.4%	32.1%	27.6%	23.9%	16.3%	15.5%	14.4%	15.3%	14.5%	14.4%	15.2%	16.2%	24	-8.25	-33.8%	-15.91	-49.6%
OREGON	14	17.7%	26.6%	18.2%	16.0%	13.2%	14.6%	14.1%	13.1%	13.3%	12.5%	14.6%	14.1%	9	-3.65	-20.6%	-12.54	-47.1%
PENNSYLVANIA	74	21.2%	26.8%	23.3%	20.9%	17.5%	16.3%	16.9%	17.5%	18.2%	17.9%	17.6%	17.7%	28	-3.45	-16.3%	-9.08	-33.9%
RHODE ISLAND	8	20.7%	25.8%	21.3%	20.2%	15.4%	16.4%	17.4%	18.5%	18.0%	17.8%	17.1%	16.1%	23	-4.63	-22.4%	-9.76	-37.8%
SOUTH CAROLINA	19	17.1%	28.9%	18.7%	18.1%	14.2%	12.7%	13.5%	13.5%	15.3%	13.6%	13.9%	13.6%	8	-3.55	-20.7%	-15.31	-53.0%
SOUTH DAKOTA	20	21.3%	30.0%	22.9%	22.9%	19.5%	19.9%	20.4%	20.3%	20.5%	22.0%	21.1%	21.8%	41	0.50	2.4%	-8.16	-27.2%
TENNESSEE	27	24.2%	29.3%	21.5%	16.9%	13.6%	13.9%	15.1%	17.0%	16.2%	14.0%	14.5%	14.6%	13	-9.66	-39.8%	-14.76	-50.3%
TEXAS	104	22.5%	27.4%	18.0%	14.3%	12.6%	13.1%	13.2%	13.8%	13.5%	13.4%	13.4%	12.8%	6	-9.70	-43.1%	-14.57	-53.2%
UTAH	11	22.3%	31.2%	20.7%	16.6%	14.7%	19.5%	20.4%	20.0%	18.5%	16.2%	17.6%	17.4%	27	-4.82	-21.6%	-13.78	-44.1%
VERMONT	6	25.1%	30.3%	29.5%	18.2%	17.3%	19.3%	19.8%	19.0%	16.7%	17.9%	18.4%	19.6%	36	-5.48	-21.8%	-10.66	-35.2%
VIRGINIA	37	23.5%	30.1%	25.8%	21.5%	19.0%	18.8%	18.7%	19.0%	18.0%	17.0%	16.7%	15.8%	20	-7.71	-32.7%	-14.29	-47.4%
WASHINGTON	25	21.4%	29.8%	23.0%	22.1%	18.5%	15.7%	17.1%	16.7%	17.0%	16.9%	16.1%	17.1%	26	-4.29	-20.0%	-12.67	-42.5%
WEST VIRGINIA	15	21.2%	27.6%	22.3%	21.6%	14.3%	14.6%	14.9%	14.8%	15.0%	16.2%	15.5%	16.0%	22	-5.20	-24.6%	-11.64	-42.2%
WISCONSIN	30	17.8%	25.1%	20.7%	20.1%	19.3%	18.6%	17.6%	18.7%	18.0%	18.3%	18.5%	17.9%	29	0.10	0.6%	-7.26	-28.9%
WYOMING	4	18.2%	21.5%	22.3%	18.5%	15.3%	14.4%	17.3%	15.1%	16.6%	15.9%	15.7%	15.7%	19	-2.50	-13.7%	-5.81	-26.9%

Note: Hawaii originally had one nursing home designated as a late adopter and that nursing home has closed.

Source: CMS Quality Measure, based on MDS 3.0 data. For more information, see the MDS 3.0 Quality Measures Users Manual.