

I068 Other rheumatic aortic valve diseases
I069 Rheumatic aortic valve disease, unspecified
I070 Rheumatic tricuspid stenosis
I071 Rheumatic tricuspid insufficiency
I072 Rheumatic tricuspid stenosis and insufficiency
I078 Other rheumatic tricuspid valve diseases
I079 Rheumatic tricuspid valve disease, unspecified



ICD-10

Official CMS Industry Resources for the ICD-10 Transition
www.cms.gov/ICD10



CMS ICD-10 Update

Denesecia Green

**Administrative Simplification Group
Office of E-Health Standards and Services
Centers for Medicare & Medicaid Services**



ICD-10 Supports...

- **Advances in Healthcare**
 - Captures innovations in Medicine
- **Administrative Transactions for Claims Processing**
 - Claims processing for provider services
- **Improves Data for Quality**
 - Enhances patient data
 - Improves Public Health Research, Reporting and Surveillance

078 Other rheumatic tricuspid valve diseases
079 Rheumatic tricuspid valve disease, unspecified
080 Rheumatic disorders of both mitral and aortic valves
081 Rheumatic disorders of both mitral and tricuspid valves
082 Rheumatic disorders of both aortic and tricuspid valves
083 Combined rheumatic disorders of mitral, aortic and tricuspid valves



ICD-10 Compliance Date

The compliance date for ICD-10-CM and PCS is
October 1, 2014



**ICD-10 DATE
Oct 1, 2014**

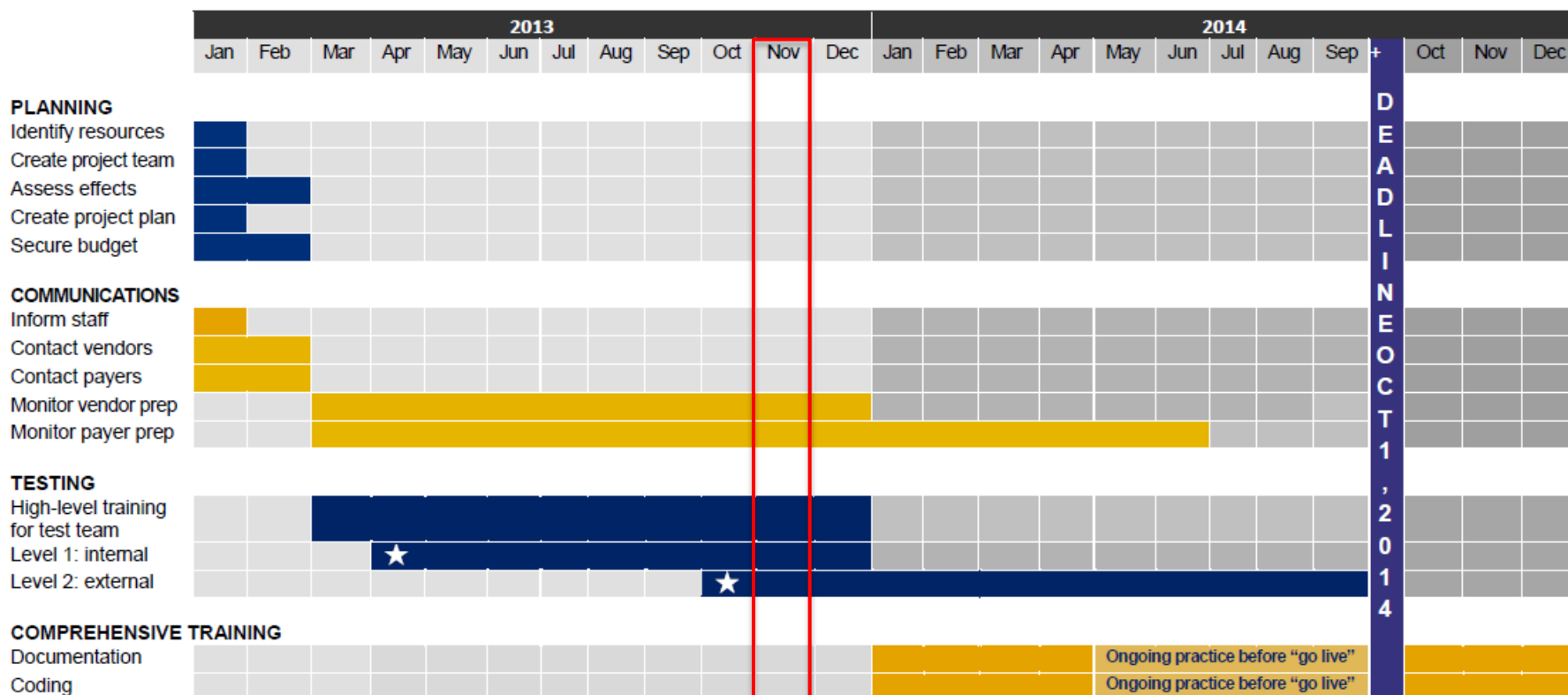
078 Other rheumatic tricuspid valve diseases
079 Rheumatic tricuspid valve disease, unspecified
080 Rheumatic disorders of both mitral and aortic valves
081 Rheumatic disorders of both mitral and tricuspid valves
082 Rheumatic disorders of both aortic and tricuspid valves
083 Combined rheumatic disorders of mitral, aortic and tricuspid valves



With One Year Left, Where Should You Be?

- Conducting testing within your organization (“internal testing”)

ICD-10 Timeline for Small-Medium Practices at a Glance



ICD-10 Implementation Update

Planning & Analysis

Design & Development

Internal Testing

- ✓ On track for October 1, 2014 –Internal Testing Phase
- ✓ Monthly Reporting
- ✓ Weekly Planning Meetings
- ✓ Medicare - March 2014 Testing Week

CMS
Implementation

States

- ✓ Quarterly Assessments for the State Medicaid Agencies
- ✓ Ongoing State Medicaid Agency technical assistance and training
- ✓ Medicaid - Testing

078 Other rheumatic tricuspid valve diseases
079 Rheumatic tricuspid valve disease, unspecified
080 Rheumatic disorders of both mitral and aortic valves
081 Rheumatic disorders of both mitral and tricuspid valves
082 Rheumatic disorders of both aortic and tricuspid valves
083 Combined rheumatic disorders of mitral, aortic and tricuspid valves



ICD-10 Implementation Update

Planning & Analysis

Design & Development

Internal Testing

Industry

- ✓ April National Medicare FFS Provider Call- Reached **12,500** providers
- ✓ August National Medicare FFS Provider Call- Reached **27,000** providers
- ✓ Continuing online training for industry – Reaching **16,000** per quarter
- ✓ Website- Reached **98,000** in September, a **20,000** increase since July
- ✓ Listserv – Reaching **130,000** people
- ✓ Free technical assistance and training with small provider groups, rural health providers, and safety net organizations **64 trainings since July 2013**
- ✓ **NEW** – Online Training Module Series (2 New Training Videos)
- ✓ **NEW** – Online ICD-10 Guide
- ✓ **Coming Soon-** Small Provider Action Plan

CMS
Implementation

076 Other rheumatic tricuspid val
077 Rheumatic tricuspid val
080 Rheumatic disorders of
081 Rheumatic disorders of
082 Rheumatic disorders of
083 Combined rheumatic disc

I068 Other rheumatic aortic valve diseases
I069 Rheumatic aortic valve disease, unspecified
I070 Rheumatic tricuspid stenosis
I071 Rheumatic tricuspid insufficiency
I072 Rheumatic tricuspid stenosis and insufficiency
I078 Other rheumatic tricuspid valve diseases
I079 Rheumatic tricuspid valve disease, unspecified



ICD-10

Official CMS Industry Resources for the ICD-10 Transition
www.cms.gov/ICD10



State Medicaid Agencies ICD-10 Implementation



Working With the State Medicaid Agencies

- **Quarterly Online ICD-10 Self-Assessments**
 - High level reports and graphics to help guide technical assistance
- **ICD-10 Implementation Handbook**
 - Online tool providing SMA specific information to assist in ICD-10 Implementation
- **State ICD-10 Collaboration Site**
 - Online community and repository for State Medicaid Agencies to communicate, collaborate, and innovate in the successful implementation of ICD-10
- **ICD-10 Bi-Weekly State Forum**
 - Conference call that allows CMS and States to discuss current issues related to ICD-10, and provides a vehicle for State-to-State collaboration on best practices and lessons learned in ICD-10 implementation
- **ICD-10 Technical Assistance**
 - Specific technical assistance and training geared to assist the SMA's ICD-10 implementation efforts
- **Health Condition Categories**
 - A foundation for SMAs to define health conditions in alignment with the needs of their specific agency

078 Other rheumatic tricuspid valve diseases
079 Rheumatic tricuspid valve disease, unspecified
080 Rheumatic disorders of both mitral and aortic valves
081 Rheumatic disorders of both mitral and tricuspid valves
082 Rheumatic disorders of both aortic and tricuspid valves
083 Combined rheumatic disorders of mitral, aortic and tricuspid valves



Health Condition Categories

- | | |
|-------------------------------|-------------------------------|
| • Affective Disorders | • AIDS/HIV |
| • Anxiety Disorders | • Hepatitis |
| • Attention Deficit Disorders | • Lung Cancer |
| • Autism Spectrum Disorders | • Brain Injury |
| • Schizophrenia | • Chronic Dementia |
| • Substance Abuse | • CVA |
| • Coronary Heart Disease | • Epilepsy |
| • Heart Failure | • Fetal Maturity/ Development |
| • Hypertension | • High Risk Pregnancy |
| • Myocardial Infarction | • Asthma |
| • Cleft Lip/Palate | • COPD |
| • Cerebral Palsy | • End-Stage Renal Disease |
| • Diabetes Mellitus | • Male related Conditions |
| • Hemophilia | • Female related Conditions |
| • Leukemia | • Hip Fracture |

- Defines 30 health conditions and code sets universally important to State Medicaid Agencies
- Informs ICD-10 transition business and operational requirements
- End users: Medical staff, policy personnel, coding professionals, coding auditors, reporting and business analysts



078 Other rheumatic tricuspid valve diseases
 079 Rheumatic tricuspid valve disease, unspecified
 080 Rheumatic disorders of both mitral and aortic valves
 081 Rheumatic disorders of both mitral and tricuspid valves
 082 Rheumatic disorders of both aortic and tricuspid valves
 083 Combined rheumatic disorders of mitral, aortic and tricuspid valves



I068 Other rheumatic aortic valve diseases
I069 Rheumatic aortic valve disease, unspecified
I070 Rheumatic tricuspid stenosis
I071 Rheumatic tricuspid insufficiency
I072 Rheumatic tricuspid stenosis and insufficiency
I078 Other rheumatic tricuspid valve diseases
I079 Rheumatic tricuspid valve disease, unspecified



ICD-10

Official CMS Industry Resources for the ICD-10 Transition
www.cms.gov/ICD10



Action Plan ICD-10 Implementation



5 Steps to ICD-10

1. Planning and Analysis
2. Design and Development
3. **Testing**
 - *Internal Testing*
 - External testing
4. Training
5. “Go Live”

078 Other rheumatic tricuspid valve diseases
079 Rheumatic tricuspid valve disease, unspecified
080 Rheumatic disorders of both mitral and aortic valves
081 Rheumatic disorders of both mitral and tricuspid valves
082 Rheumatic disorders of both aortic and tricuspid valves
083 Combined rheumatic disorders of mitral, aortic and tricuspid valves



Provider Implementation Touch Points

Systems ➔ **Ready Software & Systems**

- ✓ Upgrade and remediate systems as needed (EHR, PM)
- ✓ Test (internal, external)
 - Identify alternative ways to submit your ICD-10 claims if your system isn't ready

People ➔ **Educate and Train Staff**

- ✓ Coder, Anatomy and Physiology, and Implementation Training
 - Seek Coder and Implementation Training
 - Explore Coding Exercises and Scenarios
 - Determine use of third-party or outsourced coders

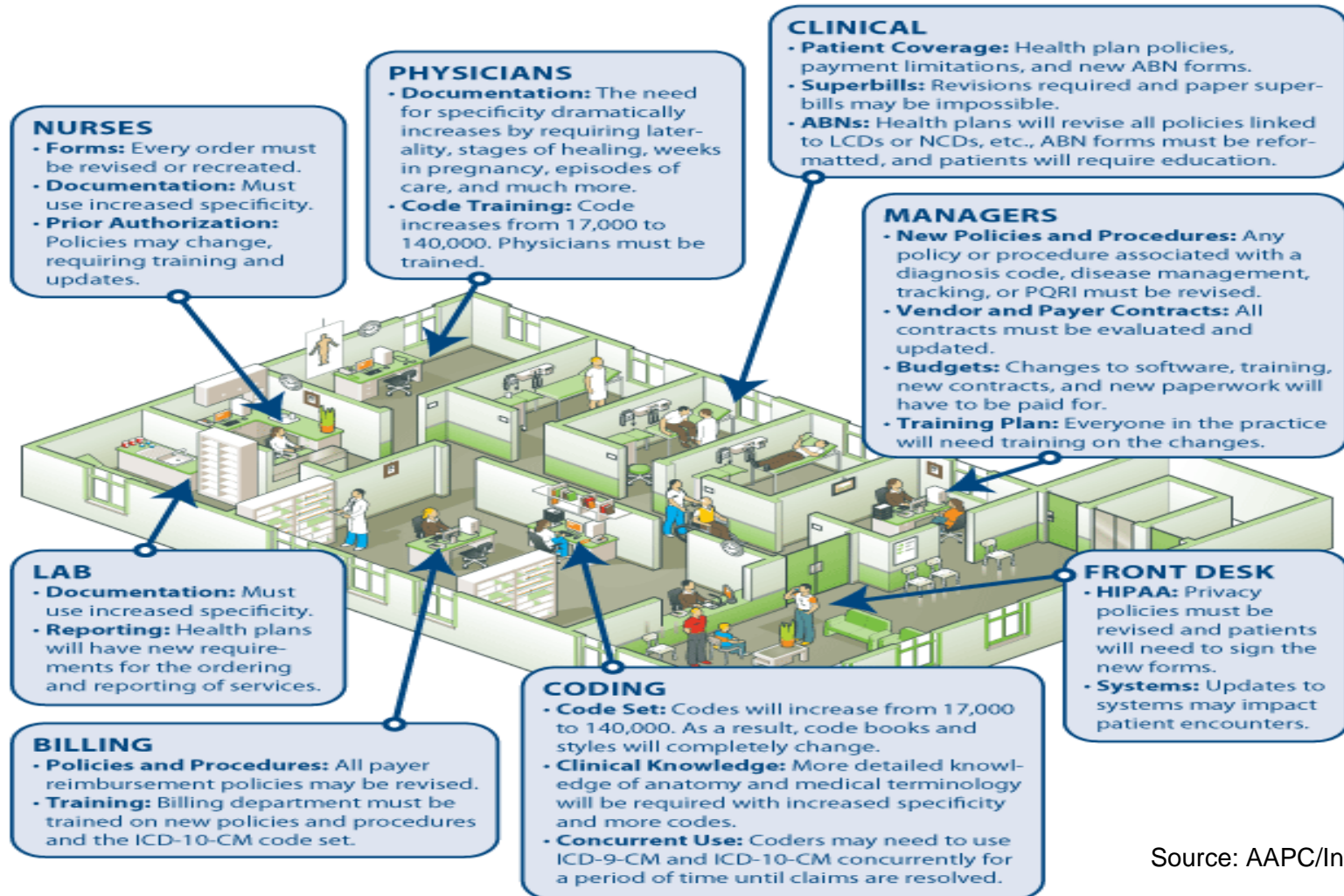
Process ➔ **Review Internal Policies**

- ✓ Internal Operations
 - Contact Clearinghouses, Trading Partners, etc.
 - Review Clinical Documentation Practices

078 Other rheumatic tricuspid valve diseases
079 Rheumatic tricuspid valve disease, unspecified
080 Rheumatic disorders of both mitral and aortic valves
081 Rheumatic disorders of both mitral and tricuspid valves
082 Rheumatic disorders of both aortic and tricuspid valves
083 Combined rheumatic disorders of mitral, aortic and tricuspid valves



What Should I Do to Prepare?

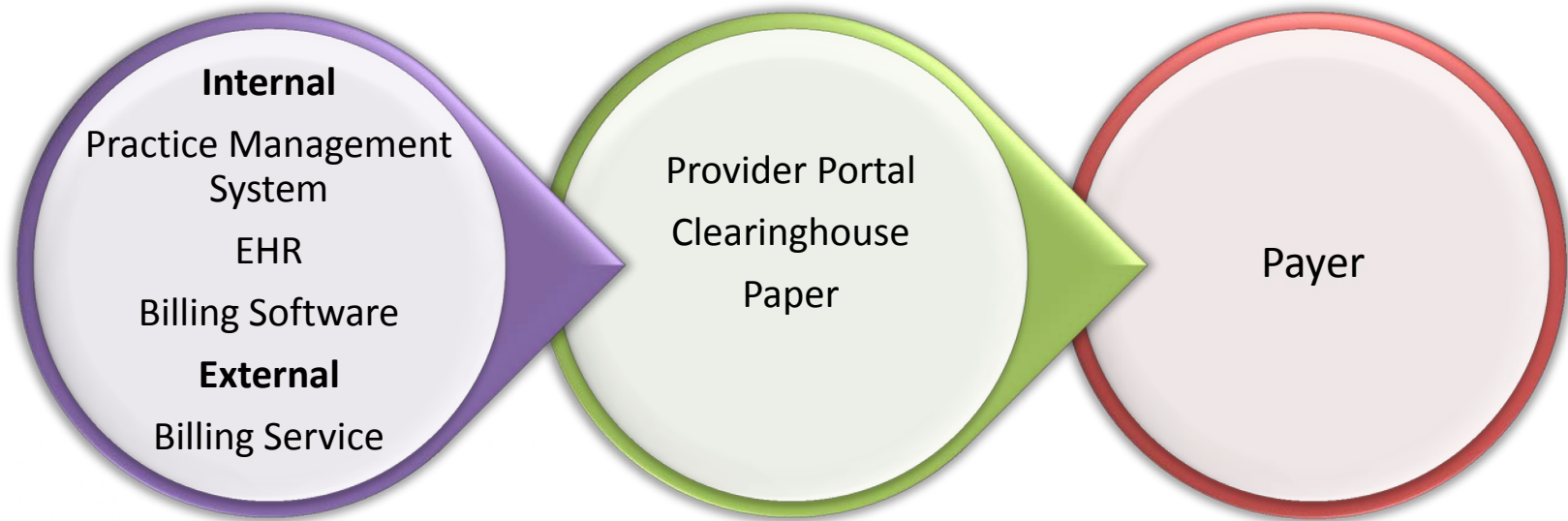


Source: AAPC/Ingenix

078 Other rheumatic tricuspid valve diseases
 079 Rheumatic tricuspid valve disease, unspecified
 080 Rheumatic disorders of both mitral and aortic valves
 081 Rheumatic disorders of both mitral and tricuspid valves
 082 Rheumatic disorders of both aortic and tricuspid valves
 083 Combined rheumatic disorders of mitral, aortic and tricuspid valves



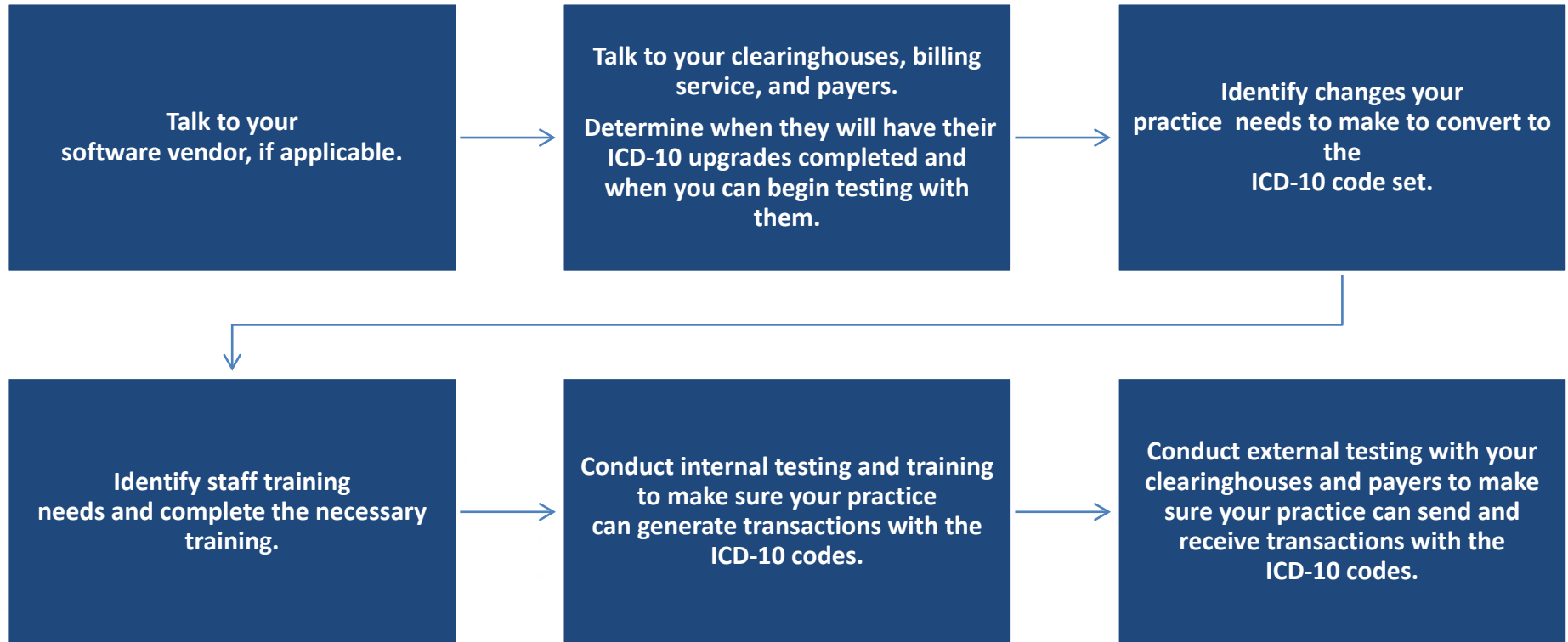
Claims Submission



078 Other rheumatic tricuspid valve diseases
079 Rheumatic tricuspid valve disease, unspecified
080 Rheumatic disorders of both mitral and aortic valves
081 Rheumatic disorders of both mitral and tricuspid valves
082 Rheumatic disorders of both aortic and tricuspid valves
083 Combined rheumatic disorders of mitral, aortic and tricuspid valves



Action Steps



Helpful Links:

<http://www.himss.org/library/icd-10/playbook?navItemNumber=13480>

https://implementicd10.noblis.org/wp-uploads/2013/03/VendorChecklist_smallmed.pdf

078 Other rheumatic tricuspid valve diseases
079 Rheumatic tricuspid valve disease, unspecified
080 Rheumatic disorders of both mitral and aortic valves
081 Rheumatic disorders of both mitral and tricuspid valves
082 Rheumatic disorders of both aortic and tricuspid valves
083 Combined rheumatic disorders of mitral, aortic and tricuspid valves



Implementation Tips

Physician Engagement	<ul style="list-style-type: none"> • Communicate practice needs for a successful transition • Communicate risks
Resources	<ul style="list-style-type: none"> • Allocate people, time and tools • Ensure everyone is trained appropriately
Oversight	<ul style="list-style-type: none"> • Monitor what is being done • Respond immediately to issues
Coordination	<ul style="list-style-type: none"> • Work with vendors, payers, trading partners • Utilize industry tools (i.e. Transition Guides, Fact Sheets, Best Practices) • Reach out to other providers - You are not alone!
Contingencies	<ul style="list-style-type: none"> • Plan for the “What if’s”.
Future	<ul style="list-style-type: none"> • Ongoing improvements to support ICD-10

078 Other rheumatic tricuspid valve diseases
 079 Rheumatic tricuspid valve disease, unspecified
 080 Rheumatic disorders of both mitral and aortic valves
 081 Rheumatic disorders of both mitral and tricuspid valves
 082 Rheumatic disorders of both aortic and tricuspid valves
 083 Combined rheumatic disorders of mitral, aortic and tricuspid valves



CMS Industry Tools and Information

CMS Industry Resources

- **Now**- 2014 General Equivalence Mappings are available for public use
- **Now**- The ICD-10 test grouper currently is available for ICD-10 development purposes
- **Now**- ICD-10 Reimbursement Mappings are available
- **Now**- National Coverage Determinations
- **April 2014*** - Local Coverage Determinations available to industry
- **July 2014*** - Home Health Groupers, Inpatient Rehab (Case Mix Groupers), Resource Utilization Groups
- **August/September 2014*** - ICD-10 grouper will be available

* Target dates

078 Other rheumatic tricuspid valve diseases
079 Rheumatic tricuspid valve disease, unspecified
080 Rheumatic disorders of both mitral and aortic valves
081 Rheumatic disorders of both mitral and tricuspid valves
082 Rheumatic disorders of both aortic and tricuspid valves
083 Combined rheumatic disorders of mitral, aortic and tricuspid valves



I068 Other rheumatic aortic valve diseases
I069 Rheumatic aortic valve disease, unspecified
I070 Rheumatic tricuspid stenosis
I071 Rheumatic tricuspid insufficiency
I072 Rheumatic tricuspid stenosis and insufficiency
I078 Other rheumatic tricuspid valve diseases
I079 Rheumatic tricuspid valve disease, unspecified



ICD-10

Official CMS Industry Resources for the ICD-10 Transition
www.cms.gov/ICD10



Resources

ICD-10 Implementation



Resources

CMS website:

<http://www.cms.gov/icd10>

- Features fact sheets, FAQs, and implementation guides, timelines, and checklists

The screenshot displays the CMS.gov website interface. At the top, the CMS.gov logo is prominent, followed by the text 'Centers for Medicare & Medicaid Services'. A navigation bar contains several buttons: Medicare, Medicaid/CHIP, Medicare/Medicaid Coordination, Private Insurance, Innovation Center, Regulations and Guidance, Research, Statistics, Data and Systems, and Outreach and Education. A search bar is located on the right. Below the navigation bar, a breadcrumb trail reads 'Home > Medicare > ICD-10 > ICD-10'. The main content area is titled 'ICD-10' and features a large banner with the CMS ICD-10 logo and the text 'Official CMS Industry Resources for the ICD-10 Transition www.cms.gov/ICD10'. To the left of the main content is a sidebar with a list of links: Latest News, CMS ICD-10 Industry Email Updates, ICD-10 Implementation Timelines, CMS Implementation Planning, Provider Resources, Medicare Fee-for-Service Provider Resources, Medicaid Resources, Payer Resources, Vendor Resources, Statute and Regulations, 2014 ICD-10-CM and GEMs, 2014 ICD-10 PCS and GEMs, 2013 ICD-10-CM and GEMs, 2013 ICD-10 PCS and GEMs, ICD-9-CM Coordination and Maintenance Committee Meetings, ICD-10 MS-DRG Conversion Project, CMS Sponsored ICD-10 Teleconferences, and CMS ICD-10 Industry Email Updates. The main content area includes an 'About ICD-10' section with text about the transition from ICD-9 to ICD-10 on October 1, 2014, and a 'CMS Resources' section with bullet points linking to fact sheets, FAQs, and educational modules. A 'Logos' section at the bottom explains the official CMS ICD-10 logo and the Medicare Learning Network logo.

CMS.gov
Centers for Medicare & Medicaid Services

Learn about [your healthcare options](#)

[Medicare](#) [Medicaid/CHIP](#) [Medicare/Medicaid Coordination](#) [Private Insurance](#) [Innovation Center](#) [Regulations and Guidance](#) [Research, Statistics, Data and Systems](#) [Outreach and Education](#)

[Home](#) > [Medicare](#) > [ICD-10](#) > [ICD-10](#)

ICD-10

[Latest News](#)
[CMS ICD-10 Industry Email Updates](#)
[ICD-10 Implementation Timelines](#)
[CMS Implementation Planning](#)
[Provider Resources](#)
[Medicare Fee-for-Service Provider Resources](#)
[Medicaid Resources](#)
[Payer Resources](#)
[Vendor Resources](#)
[Statute and Regulations](#)
[2014 ICD-10-CM and GEMs](#)
[2014 ICD-10 PCS and GEMs](#)
[2013 ICD-10-CM and GEMs](#)
[2013 ICD-10 PCS and GEMs](#)
[ICD-9-CM Coordination and Maintenance Committee Meetings](#)
[ICD-10 MS-DRG Conversion Project](#)
[CMS Sponsored ICD-10 Teleconferences](#)

ICD-10

About ICD-10

On October 1, 2014, the ICD-9 code sets used to report medical diagnoses and inpatient procedures will be replaced by ICD-10 code sets.

The transition to ICD-10 is required for everyone covered by the [Health Insurance Portability and Accountability Act \(HIPAA\)](#). Please note, the change to ICD-10 does not affect CPT coding for outpatient procedures and physician services.

Stay up to date on ICD-10!

Sign up for [CMS ICD-10 Industry Email Updates](#) and follow us on [Twitter](#).

CMS Resources

- View the [ICD-10 Introduction](#) fact sheet and [FAQs](#) to get a general overview on ICD-10.
- See official resources designed to help [providers](#), [payers](#), [vendors](#), and [non-covered entities](#) with the transition to ICD-10 on October 1, 2014.
- Access two free Medscape Education modules that provide guidance to small practices making the transition to ICD-10: [ICD-10: A Roadmap for Small Clinical Practices](#) and [ICD-10: Small Practice Guide to a Smooth Transition](#). Continuing medical education (CME) and continuing education (CE) credits are available to physicians and nurses who complete the learning modules.

Logos


This official CMS ICD-10 logo (displayed on the top of this page) signifies that these materials were developed by CMS, and are intended for general industry use.

CMS materials intended solely for providers in the Medicare Fee-for-Service program feature the Medicare Learning Network logo.

078 Other rheumatic tricuspid valve diseases
079 Rheumatic tricuspid valve disease, unspecified
080 Rheumatic disorders of both mitral and aortic valves
081 Rheumatic disorders of both mitral and tricuspid valves
082 Rheumatic disorders of both aortic and tricuspid valves
083 Combined rheumatic disorders of mitral, aortic and tricuspid valves



Resources



ICD-10.
COMPLIANCE DATE OCTOBER 1, 2014

News Updates | November 7, 2013

Back to School: Identify How ICD-10 Will Affect Your Practice

In order to be fully prepared for the October 1, 2014, ICD-10 transition, you need to know exactly how ICD-10 will affect your practice. Although many people associate coding with submitting claims, in reality, ICD codes are used in a variety of processes within clinical practices, from registration and referrals to billing and payment.

The following is a list of important questions to help you think through where you use ICD codes and how ICD-10 will affect your practice. By making a plan to address these areas now, you can make sure your practice is ready for the ICD-10 transition.

- **Where do you use ICD-9 codes?** Keep a log of everywhere you see and use an ICD-9 code. If the code is on paper, you will need new forms (e.g., patient encounter form, superbill). If the code is entered or displayed in your computer, check with your EHR and/or practice management system vendor to see when your system will be ready for ICD-10 codes.

CMS ICD-10 Email Updates provide timely information

To sign up for updates:

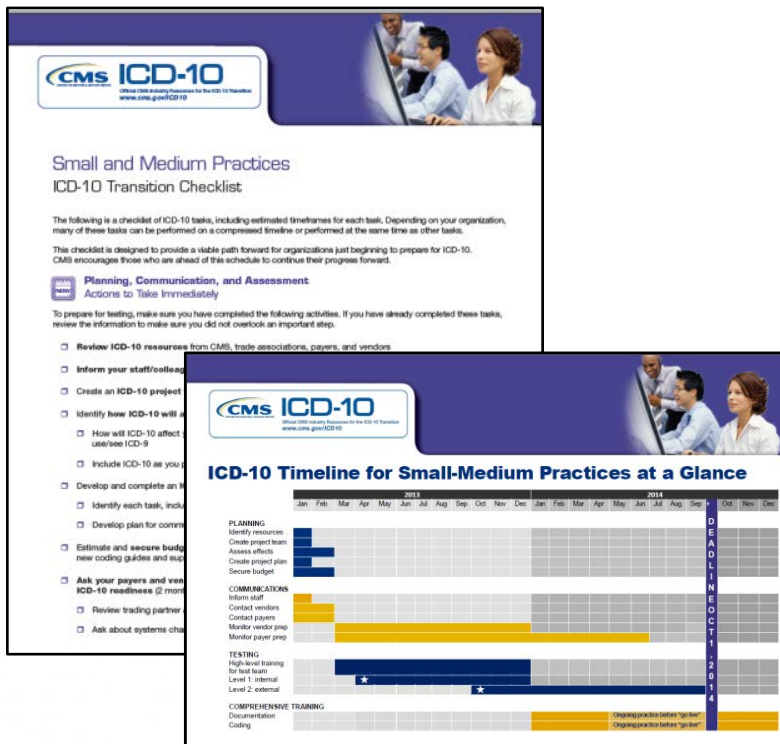
1. Go to
<http://cms.gov/icd10>
2. Select “CMS ICD-10 Industry Email Updates” from left navigation bar
3. Click on “Sign up for update messages”

078 Other rheumatic tricuspid valve diseases
079 Rheumatic tricuspid valve disease, unspecified
080 Rheumatic disorders of both mitral and aortic valves
081 Rheumatic disorders of both mitral and tricuspid valves
082 Rheumatic disorders of both aortic and tricuspid valves
083 Combined rheumatic disorders of mitral, aortic and tricuspid valves



Resources

- Timelines and checklists for:
- Small to medium practices
- Large practices
- Small hospitals
- Payers



CMS ICD-10
Official CMS Industry Resources for the ICD-10 Transition
www.cms.gov/ICD10

Small and Medium Practices ICD-10 Transition Checklist

The following is a checklist of ICD-10 tasks, including estimated timelines for each task. Depending on your organization, many of these tasks can be performed on a compressed timeline or performed at the same time as other tasks.

This checklist is designed to provide a viable path forward for organizations just beginning to prepare for ICD-10. CMS encourages those who are ahead of this schedule to continue their progress forward.

Planning, Communication, and Assessment
Actions to Take Immediately

To prepare for testing, make sure you have completed the following activities. If you have already completed these tasks, review the information to make sure you did not overlook an important step.

- ☐ Review ICD-10 resources from CMS, trade associations, payers, and vendors
- ☐ Inform your staff/colleagues
- ☐ Create an ICD-10 project
- ☐ Identify how ICD-10 will affect your practice
 - ☐ How will ICD-10 affect your practice?
 - ☐ Include ICD-10 as you plan
- ☐ Develop and complete an ICD-10 project plan
 - ☐ Identify each task, including sub-tasks
 - ☐ Develop plan for communication and training
- ☐ Estimate and secure budget
 - ☐ Create project plan
 - ☐ Secure budget
- ☐ Ask your payers and vendors about ICD-10 readiness (2 months)
 - ☐ Review trading partner
 - ☐ Ask about systems changes

ICD-10 Timeline for Small-Medium Practices at a Glance

	2011	2012	2013	2014	2015							
	Jan	Feb	Mar	Apr	May	Jun	Jul	Aug	Sep	Oct	Nov	Dec
PLANNING												
Identify resources												
Create project team												
Assess efforts												
Create project plan												
Secure budget												
COMMUNICATIONS												
Inform staff												
Contact vendors												
Contact payers												
Monitor vendor prep												
Monitor payer prep												
TESTING												
High-level training for test team												
Level 1: internal												
Level 2: external												
COMPREHENSIVE TRAINING												
Documentation												
Coding												

DEADLINE OCT 1, 2014

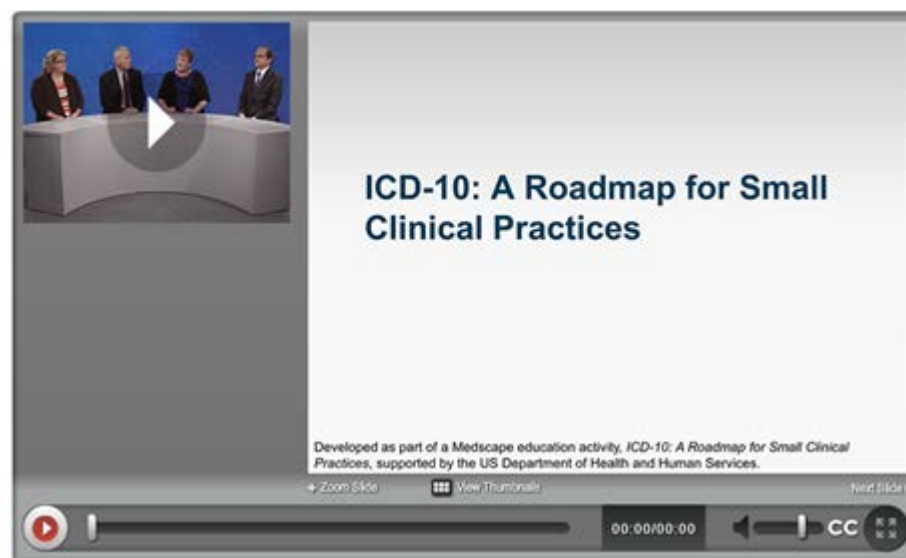
078 Other rheumatic tricuspid valve diseases
 079 Rheumatic tricuspid valve disease, unspecified
 080 Rheumatic disorders of both mitral and aortic valves
 081 Rheumatic disorders of both mitral and tricuspid valves
 082 Rheumatic disorders of both aortic and tricuspid valves
 083 Combined rheumatic disorders of mitral, aortic and tricuspid valves



Resources

ICD-10 Medscape Videos

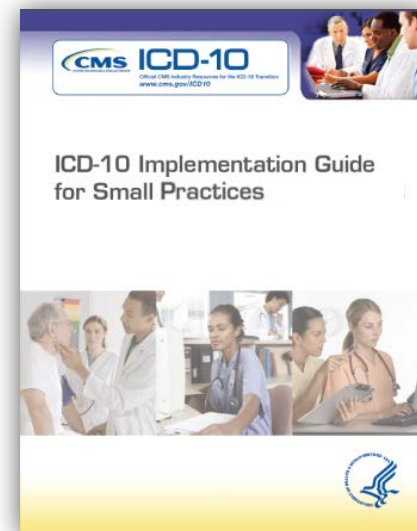
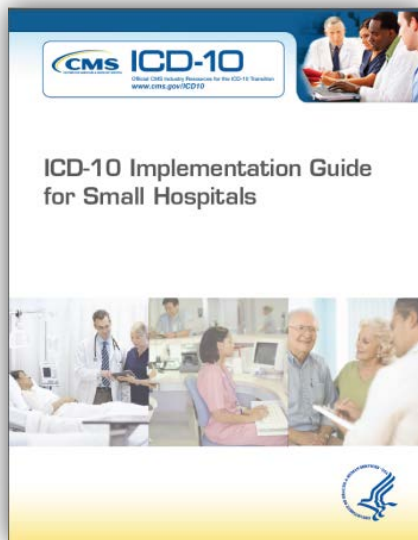
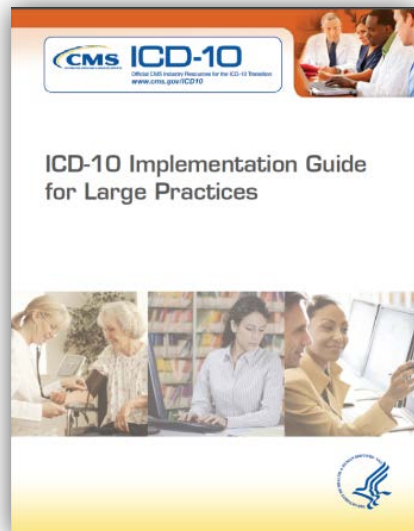
- ICD-10: A Roadmap for Small Clinical Practices
- ICD-10: Small Practice Guide to a Smooth Transition



Free continuing medical education (CME) and continuing education (CE) credits available to physicians and nurses who complete a brief post-test. Accessible from CMS ICD-10 website:

<http://www.cms.gov/icd10>

Transition Guides



078 Other rheumatic tricuspid valve diseases
 079 Rheumatic tricuspid valve disease, unspecified
 080 Rheumatic disorders of both mitral and aortic valves
 081 Rheumatic disorders of both mitral and tricuspid valves
 082 Rheumatic disorders of both aortic and tricuspid valves
 083 Combined rheumatic disorders of mitral, aortic and tricuspid valves



Resources

[Online ICD-10 Guide](http://cms.gov/ICD10): on Provider Resources page, cms.gov/ICD10

CMS ICD-10
Official CMS Industry Resources for the ICD-10 Transition
www.cms.gov/ICD10

ICD-10 Implementation Guide

HOME ICD-10 OVERVIEW START RESOURCES

ICD-10 Implementation Timeline

COMMUNICATION & OUTREACH
Sep 2010 - Mar 2015

PLANNING & ANALYSIS
Jul 2009 - Feb 2013

DESIGN
Dec 2011 - Feb 2013

DEVELOPMENT
Dec 2012 - Apr 2013

TESTING
Apr 2013 - Sep 2014

IMPLEMENTATION
Oct 1, 2014

PLANNING & ANALYSIS

Planning & Analysis

- Establish Project Structure
- Assess business and policy impacts
- Establish risk management

START ▶

Welcome

On October 1, 2014, a key element of the data foundation of the United States' health care system will undergo a major transformation. We will transition from the decades-old Ninth Edition of the International Classification of Diseases (ICD-9) set of diagnosis and inpatient procedure codes, to the far more contemporary Tenth Edition of those code sets—or ICD-10—used by most developed countries throughout the world.

This transition will have a major impact on anyone who uses health care information that contains a diagnosis and/or inpatient procedure code.

To learn more, please visit the CMS ICD-10 website

Step-by-step ICD-10 advice for clinical practices, small hospitals, and payers

078 Other rheumatic tricuspid valve diseases
079 Rheumatic tricuspid valve disease, unspecified
080 Rheumatic disorders of both mitral and aortic valves
081 Rheumatic disorders of both mitral and tricuspid valves
082 Rheumatic disorders of both aortic and tricuspid valves
083 Combined rheumatic disorders of mitral, aortic and tricuspid valves



CMS ICD-10 Fact Sheets



The ICD-10 Transition: An Introduction

The ICD-9 code sets used to report medical diagnoses and inpatient procedures will be replaced by ICD-10 code sets. This fact sheet provides background on the ICD-10 transition, general guidance on how to prepare for it, and resources for more information.

About ICD-10

ICD-10-CM/PCS (International Classification of Diseases, 10th Edition, Clinical Modification / Procedure Coding System) consists of two parts:

1. ICD-10-CM for diagnosis coding
2. ICD-10-PCS for inpatient procedure coding

ICD-10-CM is for use in all U.S. health care settings. Diagnosis coding under ICD-10-CM uses 3 to 7 digits instead of the 3 to 5 digits used with ICD-9-CM, but the format of the code sets is similar.

ICD-10-PCS is for use in U.S. inpatient hospital settings only. ICD-10-PCS uses 7 alphanumeric digits instead of the 3 or 4 numeric digits used under ICD-9-CM procedure coding. Coding under ICD-10-PCS is much more specific and substantially different from ICD-9-CM procedure coding.

The transition to ICD-10 is occurring because ICD-9 produces limited data about patients' medical conditions and hospital inpatient procedures. ICD-9 is 30 years old, has outdated terms, and is inconsistent with current medical practice. Also, the structure of ICD-9 limits the number of new codes that can be created, and many ICD-9 categories are full.

Who Needs to Transition

ICD-10 will affect diagnosis and inpatient procedure coding for everyone covered by Health Insurance Portability and Accountability Act (HIPAA), not just those who submit Medicare or Medicaid claims. The change to ICD-10 does not affect CPT coding for outpatient procedures.



ICD-10 Basics for Medical Practices

The ICD-10 transition takes planning, preparation, and time, so medical practices should continue working toward compliance. The following quick checklist will assist you with preliminary planning steps.

- Identify your current systems and work processes that use ICD-9 codes. This could include your clinical documentation, encounter forms/superbills, practice management system, electronic health record system, contracts, and public health and quality reporting protocols. It is likely that wherever ICD-9 codes now appear, ICD-10 codes will take their place.
- Talk with your practice management system vendor about accommodations for ICD-10 codes.
 - Confirm with your vendor that your system has been upgraded to **Version 5010** standards, which have been required since January 1, 2012. Unlike the older Version 4010/4010A standards, Version 5010 accommodates ICD-10 codes.
 - Contact your vendor and ask what updates they are planning to make to your practice management system for ICD-10, and when they expect to have it ready to install.
 - Check your contract to see if upgrades are included as part of your agreement.
 - If you are in the process of making a practice management or related system purchase, ask if it is ICD-10 ready.
- Discuss implementation plans with all your clearinghouses, billing services, and payers to ensure a smooth transition. Be proactive, don't wait. Contact organizations you conduct business with such as your payers, clearinghouse, or billing service. Ask about their plans for ICD-10 compliance and when they will be ready to test their systems for the transition.
- Talk with your payers about how ICD-10 implementation might affect your contracts. Because ICD-10 codes are much more specific than ICD-9 codes, payers may modify terms of contracts, payment schedules, or reimbursement.
- Identify potential changes to work flow and business processes. Consider changes to existing processes including clinical documentation, encounter forms, and quality and public health reporting.



FAQs: ICD-10 Transition Basics

The ICD-9 code sets used to report medical diagnoses and inpatient procedures will be replaced by ICD-10 code sets. These FAQs provide an overview of the transition to ICD-10 and points to resources for more information.

- What does ICD-10 compliance mean?**
ICD-10 compliance means that everyone covered by **HIPAA** is able to successfully conduct health care transactions using ICD-10 codes.
- Will ICD-10 replace Current Procedural Terminology (CPT) procedure coding?**
No. The switch to ICD-10 does not affect CPT coding for outpatient procedures. Like ICD-9 procedure codes, ICD-10-PCS codes are for hospital inpatient procedures only.
- Who is affected by the transition to ICD-10? If I don't deal with Medicare claims, will I have to transition?**
Everyone covered by **HIPAA** must transition to ICD-10. This includes providers and payers who do not deal with Medicare claims.
- Do state Medicaid programs need to transition to ICD-10?**
Yes. Like everyone else covered by **HIPAA**, state Medicaid programs must comply with ICD-10.
- What happens if I don't switch to ICD-10?**
Claims for all services and hospital inpatient procedures performed on or after the **compliance deadline** must use ICD-10 diagnosis and inpatient procedure codes. (This does not apply to CPT coding for outpatient procedures.) Claims that do not use ICD-10 diagnosis and inpatient procedure codes cannot be processed. It is important to note, however, that claims for services and inpatient procedures provided before the **compliance date** must use ICD-9 codes.
- If I transition early to ICD-10, will CMS be able to process my claims?**
No. CMS and other payers will not be able to process claims using ICD-10 until the **compliance date**. However, providers should expect ICD-10 testing to take up to 18 months.
- Codes change every year, so why is the transition to ICD-10 any different from the annual code changes?**
ICD-10 codes are different from ICD-9 codes and have a completely different structure. Currently, ICD-9 codes are mostly numeric and have 3 to 5 digits. ICD-10 codes are alphanumeric and contain 3 to 7 characters. ICD-10 is more robust and descriptive with "one-to-many" matches in some instances.
Like ICD-9 codes, ICD-10 codes will be updated every year.

Visit www.cms.gov/ICD10 for ICD-10 and Version 5010 resources from CMS.



078 Other rheumatic tricuspid valve diseases
079 Rheumatic tricuspid valve disease, unspecified
080 Rheumatic disorders of both mitral and aortic valves
081 Rheumatic disorders of both mitral and tricuspid valves
082 Rheumatic disorders of both aortic and tricuspid valves
083 Combined rheumatic disorders of mitral, aortic and tricuspid valves



ICD-10 Resource Links

ICD-10 Website

- <http://www.cms.gov/Medicare/Coding/ICD10/index.html>

Implementation Guides

- <https://implementicd10.noblis.org>

Mapping (GEMs)

- **GEMs Crosswalk documents**
 - <http://cms.hhs.gov/Medicare/Coding/ICD10/2014-ICD-10-CM-and-GEMs.html>
- **GEMs 2014 General Equivalence Mappings** (Technical Document (zip file))
 - <http://cms.hhs.gov/Medicare/Coding/ICD10/2014-ICD-10-PCS.html>

078 Other rheumatic tricuspid valve diseases
079 Rheumatic tricuspid valve disease, unspecified
080 Rheumatic disorders of both mitral and aortic valves
081 Rheumatic disorders of both mitral and tricuspid valves
082 Rheumatic disorders of both aortic and tricuspid valves
083 Combined rheumatic disorders of mitral, aortic and tricuspid valves



ICD-10 Resource Links

Medicare Learning Network Articles

- <http://www.cms.gov/Outreach-and-Education/Medicare-Learning-Network-MLN/MLNGenInfo/index.html?redirect=/mlngeninfo>

ICD-10 National Provider Calls

- <http://www.cms.gov/Medicare/Coding/ICD10/CMS-Sponsored-ICD-10-Teleconferences.html>

National Coverage Determinations (NCDs)

- <http://www.cms.gov/medicare-coverage-database/overview-and-quick-search.aspx>

Medicare Testing Week

- <http://www.cms.gov/Outreach-and-Education/Medicare-Learning-Network-MLN/MLNMattersArticles/Downloads/MM8465.pdf>

078 Other rheumatic tricuspid valve diseases
079 Rheumatic tricuspid valve disease, unspecified
080 Rheumatic disorders of both mitral and aortic valves
081 Rheumatic disorders of both mitral and tricuspid valves
082 Rheumatic disorders of both aortic and tricuspid valves
083 Combined rheumatic disorders of mitral, aortic and tricuspid valves



ICD-10 Resource Links

Medicare Reimbursement Mappings

- 2014 Reimbursement Mappings – Diagnosis Codes and Guides
<http://cms.hhs.gov/Medicare/Coding/ICD10/2014-ICD-10-CM-and-GEMs.html>
- 2014 Reimbursement Mappings – Procedure Codes and Guides
<http://cms.hhs.gov/Medicare/Coding/ICD10/2014-ICD-10-PCS.html>
- Links to ordering the ICD-10 Pilot Version 31.0 Mainframe and PC version of the ICD-10 MS-DRGs and Medicare Code Editor (FY 2014 version) from NTIS have been placed on the CMS website under the Related Links section at <http://cms.hhs.gov/Medicare/Coding/ICD10/ICD-10-MS-DRG-Conversion-Project.html>
- <http://www.cms.gov/Outreach-and-Education/Medicare-Learning-Network-MLN/MLNGenInfo/index.html?redirect=/mlngeninfo>

Medicare Claims Processing Guidance for ICD-10

- <http://www.cms.gov/Outreach-and-Education/Medicare-Learning-Network-MLN/MLNMattersArticles/downloads/MM7492.pdf>

078 Other rheumatic tricuspid valve diseases
079 Rheumatic tricuspid valve disease, unspecified
080 Rheumatic disorders of both mitral and aortic valves
081 Rheumatic disorders of both mitral and tricuspid valves
082 Rheumatic disorders of both aortic and tricuspid valves
083 Combined rheumatic disorders of mitral, aortic and tricuspid valves



Looking Forward



Pre-Implementation

- Collaboration with stakeholder groups for pre-implementation and industry monitoring activities
 - **New-** CMS Weekly Planning Meetings with Industry Stakeholders
 - **New-** WEDI Stakeholder Coalition “ICD-10 Industry Support Initiative”
 - Public and private partnership to help providers through the transition
- Host national calls and webinars to address specific ICD-10 topics
- Develop targeted materials to assist providers

Post-Implementation

- Continued collaboration with stakeholder groups for post-implementation and industry monitoring activities
- Increase internal monitoring activities with a focus on provider payment
- Host national calls and webinars to address specific ICD-10 topics
- Develop targeted materials to assist providers

076 Other rheumatic tricuspid valve diseases
077 Rheumatic tricuspid valve disease, unspecified
080 Rheumatic disorders of both mitral and aortic valves
081 Rheumatic disorders of both mitral and tricuspid valves
082 Rheumatic disorders of both aortic and tricuspid valves
083 Combined rheumatic disorders of mitral, aortic and tricuspid valves



For More Information

CMS Point of Contact

Denesecia Green

Office of E-Health Standards and Services
Centers for Medicare & Medicaid Services



ICD-10 Implementation Questions

icd10questions@noblis.org

078 Other rheumatic tricuspid valve diseases
079 Rheumatic tricuspid valve disease, unspecified
080 Rheumatic disorders of both mitral and aortic valves
081 Rheumatic disorders of both mitral and tricuspid valves
082 Rheumatic disorders of both aortic and tricuspid valves
083 Combined rheumatic disorders of mitral, aortic and tricuspid valves

