



How the CMS Innovation Center is **SUPPORTING PRIMARY CARE**

Primary care is the foundation of a high-performing health system and essential to improving health outcomes for patients and lowering costs. For that reason, the CMS Innovation Center has invested significant time and resources over the years testing models to strengthen primary care, improve care coordination, and address social determinants of health - like housing and food insecurity.



States Advancing All-Payer Health Equity Approaches and Development (AHEAD) Model

- ▶ **Targets historical underinvestment in primary care** via statewide primary care investment targets.
- ▶ **Provides Enhanced Primary Care Payments** to increase investment in primary care.
- ▶ **Uses a flexible framework of care transformation activities** to align with existing Medicaid value-based-payment arrangements.

2024 - 2034



Making Care Primary (MCP)

- ▶ **Improves care management, community connections, and care integration** by providing capacity building resources to those new to value-based care.
- ▶ **Increases access to care and create sustainable change in underserved communities** by facilitating partnerships with state Medicaid agencies, social service providers, Federally Qualified Health Centers (FQHCs) and specialty care providers.

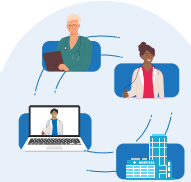
2024-2034



Primary Care First (PCF)

- ▶ **Helps primary care practices better support their patients** in managing their health — especially patients with complex, chronic health conditions.
- ▶ **Enables primary care providers to offer a broader range of health care services** that meet the needs of their patients. For example, practices may offer around-the-clock access to a clinician and support for health-related social needs.

2021-2025



ACO Realizing Equity, Access, and Community Health (ACO REACH)

- ▶ **Encourages health care providers — including primary and specialty care doctors, hospitals, and others — to come together to form an Accountable Care Organization, or ACO.**
- ▶ **Breaks down silos and delivers high-quality, coordinated care** to patients that improves health outcomes and manages costs.
- ▶ **Addresses health disparities** to improve health equity.

2021-2026