

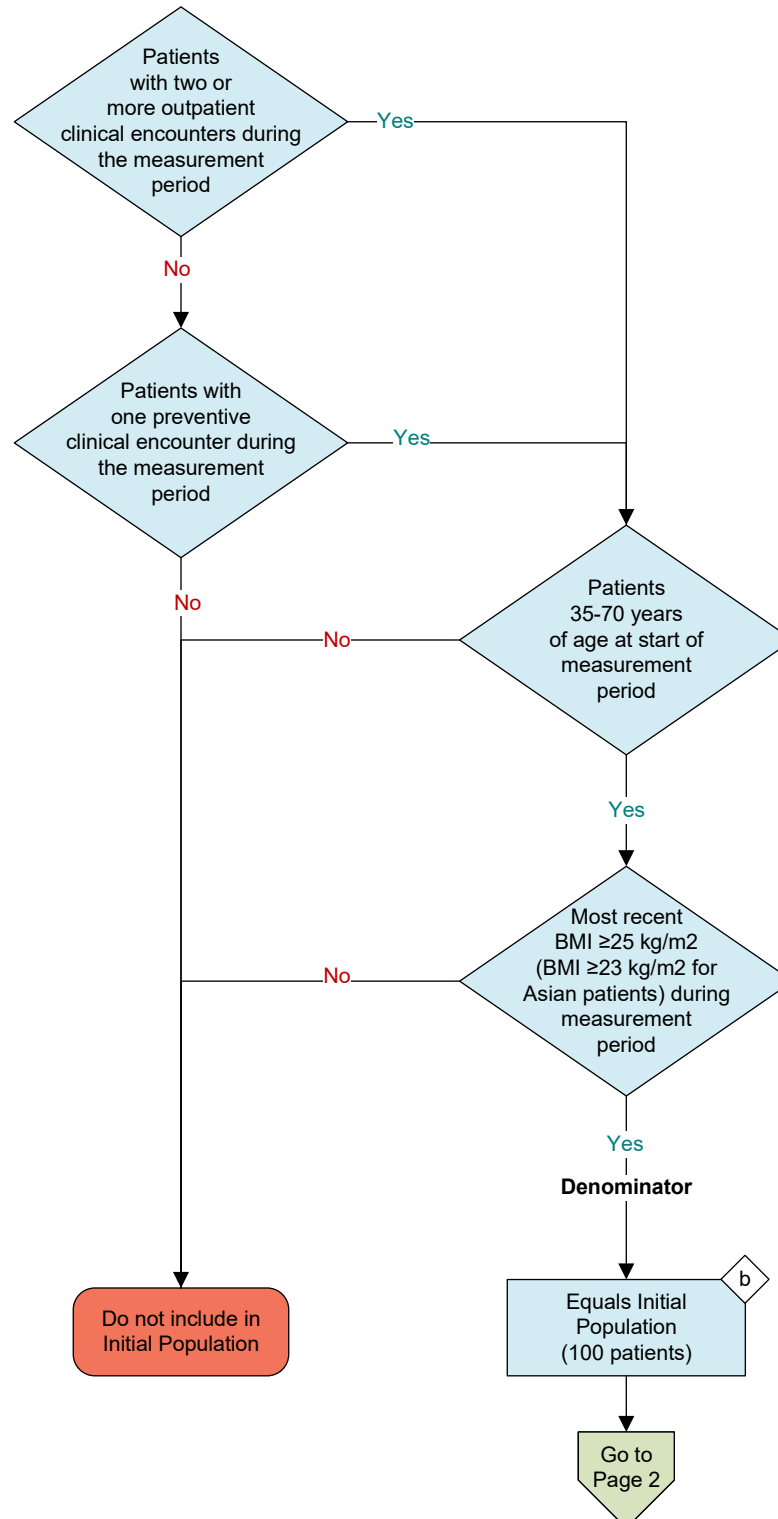
**2026 eCQM Flow**  
**eCQM Identifier: CMS1154v1**

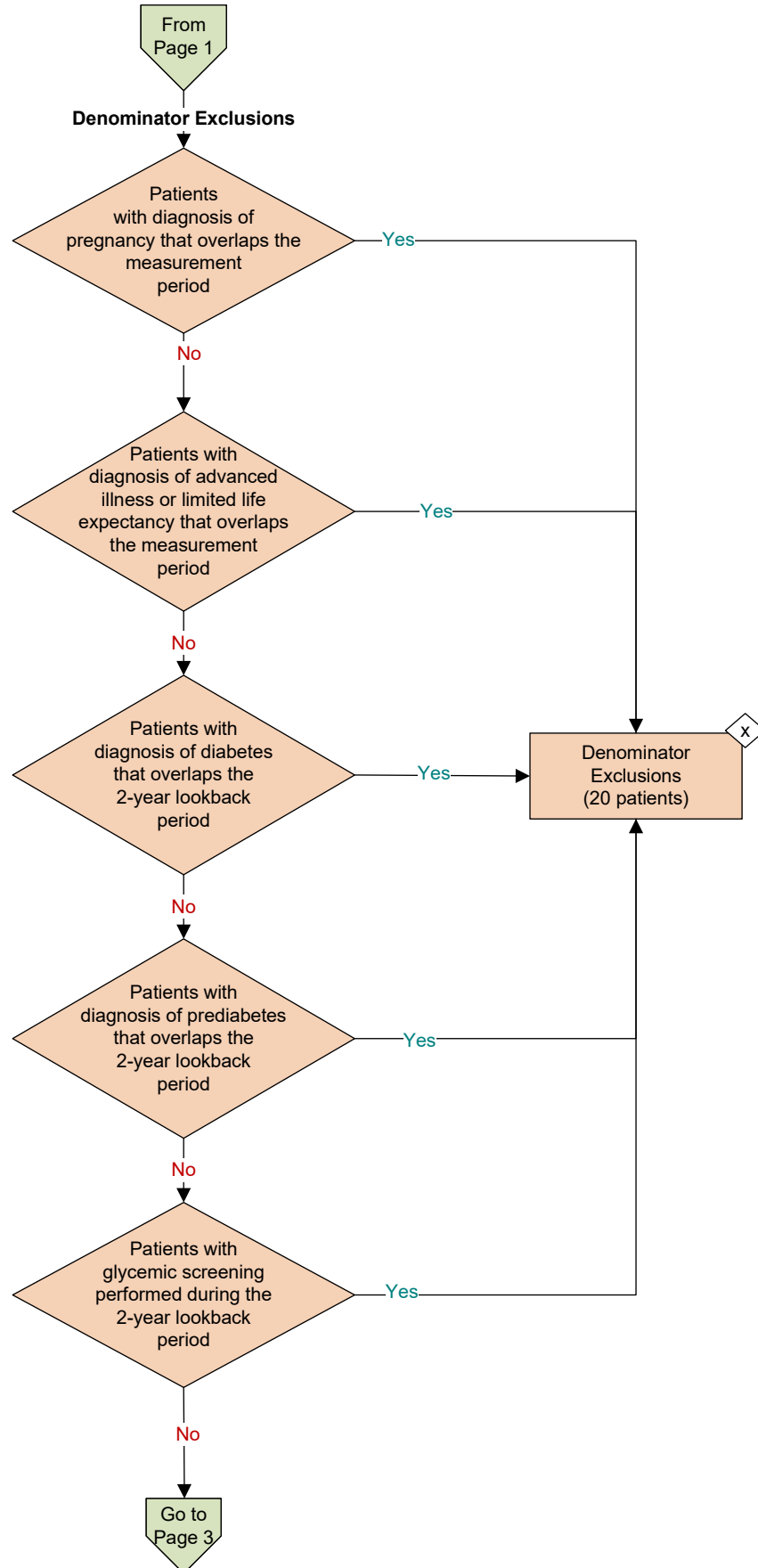
**NOTE:** This flow diagram represents an overview of population criteria requirements. **Refer to the eCQM specification for a complete list of data elements included in this measure and required for submission.**

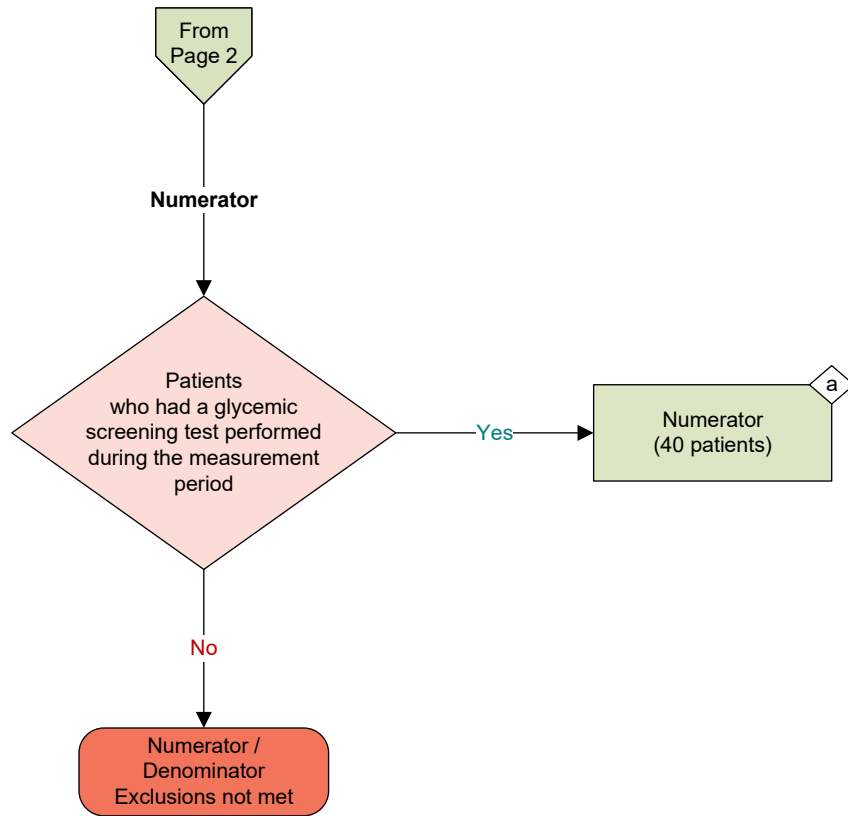
**Screening for Abnormal Glucose Metabolism in Patients at Risk of Developing Diabetes**

Percentage of adult patients with risk factors for type 2 diabetes who are due for glycemic screening for whom the screening process was completed during the measurement period

**This eCQM is a patient-based measure**

**Initial Population**





**Performance Rate =**

**Sample Calculation**

$$\frac{\text{Numerator (a = 40 patients)}}{\text{Denominator (b = 100 patients) - Denominator Exclusions (x = 20 patients)}} = \frac{40}{80} = 50\%$$

**eCQM Identifier: CMS1154v1****eCQM Title: Screening for Abnormal Glucose Metabolism in Patients at Risk of Developing Diabetes**

**NOTE:** This flow diagram represents an overview of population criteria requirements. Refer to the eCQM specification for a complete list of data elements included in this measure and required for submission.

**Description:** Percentage of adult patients with risk factors for type 2 diabetes who are due for glycemic screening for whom the screening process was completed during the measurement period.

**This eCQM is a patient-based measure.**

**eCQM Flow Narrative****Initial Population**

Start by identifying the Initial Population which includes patients with at least two outpatient clinical encounters or one preventive clinical encounter during the measurement period who have the following risk factors for type 2 diabetes: are age 35-70 at the start of the measurement period and most recent BMI of  $\geq 25$  kg/m<sup>2</sup> (BMI  $\geq 23$  kg/m<sup>2</sup> for Asian patients) during the measurement period.

**Denominator**

The Denominator equals the Initial Population. In the sample calculation provided at the end of the eCQM flow, the Denominator is equal to 100 patients.

**Denominator Exclusions**

The Denominator Exclusions criteria identify a subset of the Denominator population by excluding patients with a diagnosis of pregnancy that overlaps measurement period; patients with diagnosis of advanced illness or limited life expectancy that overlaps the measurement period; patients with diagnosis of diabetes that overlaps a 2-year look-back period; patients with diagnosis of prediabetes that overlaps a 2-year look-back period; and patients with glycemic screening performed during a 2-year look-back period. In the sample calculation provided at the end of the eCQM flow, the Denominator Exclusions are equal to 20 episodes.

**Numerator**

The Numerator criteria identify a subset of the Denominator population (that did not meet the Denominator Exclusions criteria) by including patients who had a glycemic screening test performed during the measurement period. In the sample calculation provided at the end of the eCQM flow, the Numerator is equal to 40 episodes.

**Sample Calculation**

A sample calculation is provided to help determine how the measure performance rate is derived. The measure performance rate is calculated by dividing the Numerator (total equals 40 patients) by the difference between the Denominator (total equals 100 patients) and the Denominator Exclusions (total equals 20 patients), which is equal to a score of 50 percent.