

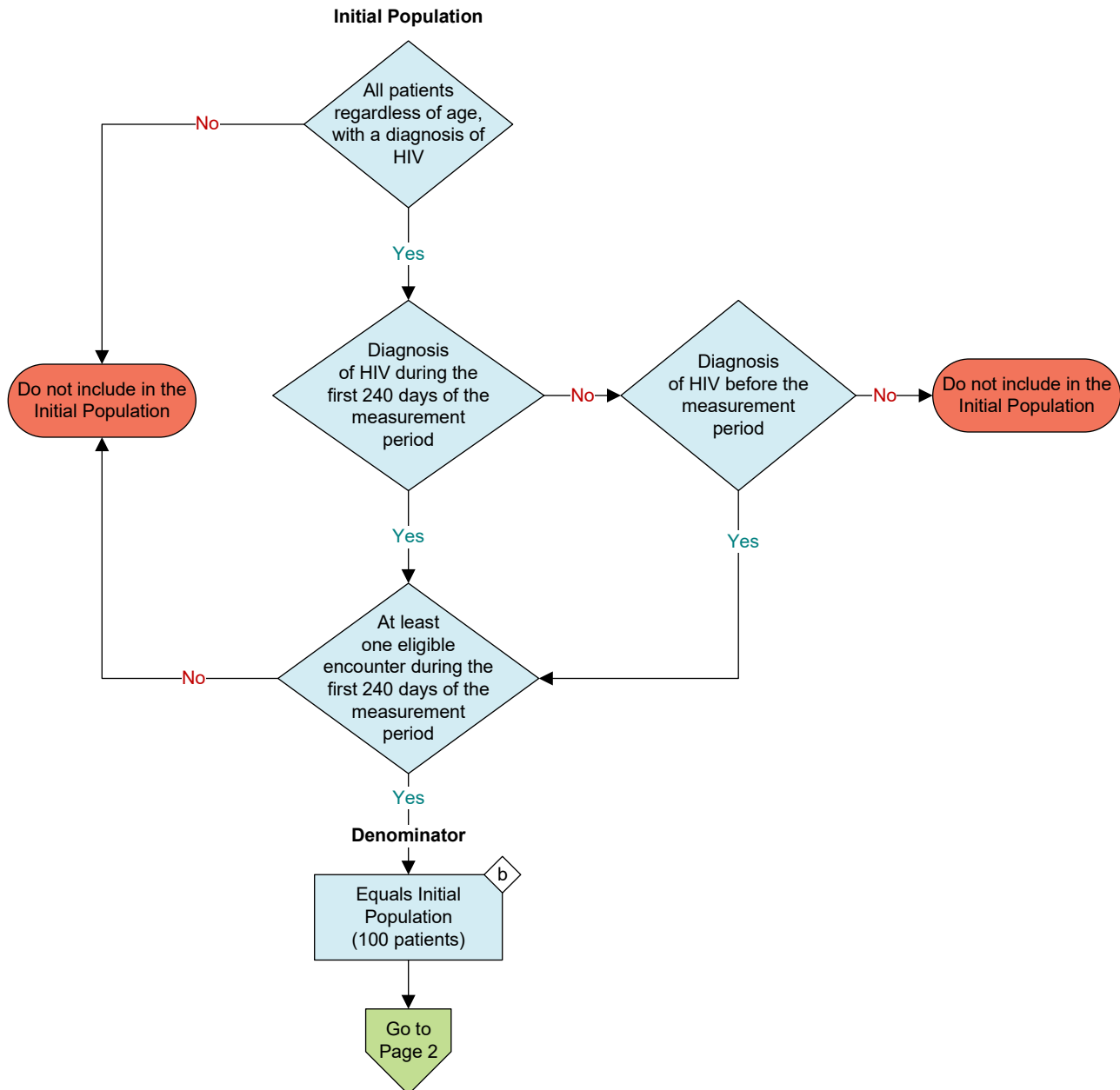
2026 eCQM Flow
eCQM Identifier: CMS1157v2

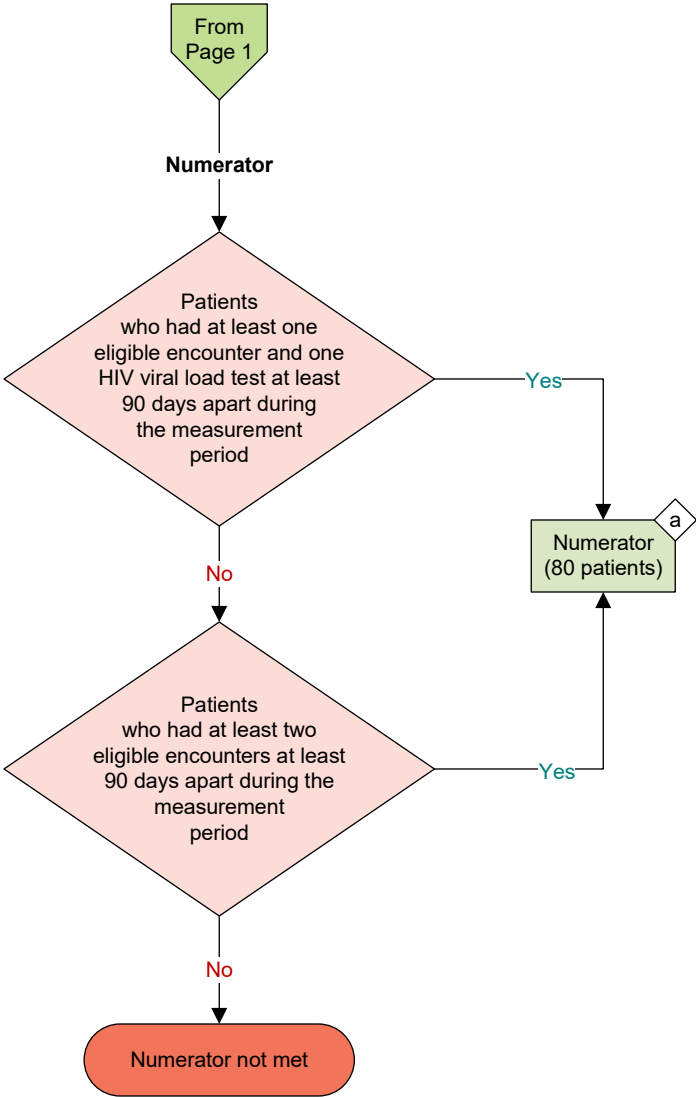
NOTE: This flow diagram represents an overview of population criteria requirements. **Refer to the eCQM specification for a complete list of data elements included in this measure and required for submission.**

HIV Annual Retention in Care

Percentage of patients, regardless of age, with a diagnosis of Human Immunodeficiency Virus (HIV) during the first 240 days of the measurement period or before the measurement period who had at least two eligible encounters or at least one eligible encounter and one HIV viral load test that were at least 90 days apart within the measurement period

This eCQM is a patient-based measure





Performance Rate =

Sample Calculation

Numerator (a = 80 patients)

Denominator (b = 100 patients)

= $\frac{80}{100}$ = 80 %

eCQM Identifier: CMS1157v2
eCQM Title: HIV Annual Retention in Care

NOTE: This flow diagram represents an overview of population criteria requirements. Refer to the eCQM specification for a complete list of data elements included in this measure and required for submission.

Description: Percentage of patients, regardless of age, with a diagnosis of Human Immunodeficiency Virus (HIV) during the first 240 days of the measurement period or before the measurement period who had at least two eligible encounters or at least one eligible encounter and one HIV viral load test that were at least 90 days apart within the measurement period.

This eCQM is a patient-based measure.

eCQM Flow Narrative

Initial Population

Start by identifying the Initial Population, which includes all patients, regardless of age, with a diagnosis of HIV during the first 240 days of the measurement period or before the measurement period who had at least one eligible encounter during the first 240 days of the measurement period.

Denominator

The Denominator equals the Initial Population. In the sample calculation provided at the end of the eCQM flow, the Denominator is equal to 100 patients.

Numerator

The Numerator criteria identify a subset of the Denominator population by including patients who had at least one eligible encounter and one HIV viral load test at least 90 days apart during the measurement period, or who had at least two eligible encounters at least 90 days apart during the measurement period. In the sample calculation provided at the end of the eCQM flow, the Numerator is equal to 80 patients.

Sample Calculation

A sample calculation is provided to help determine how the measure performance rate is derived. The measure performance rate is calculated by dividing the Numerator (total equals 80 patients) by the Denominator (total equals 100 patients), which is equal to a score of 80 percent.