

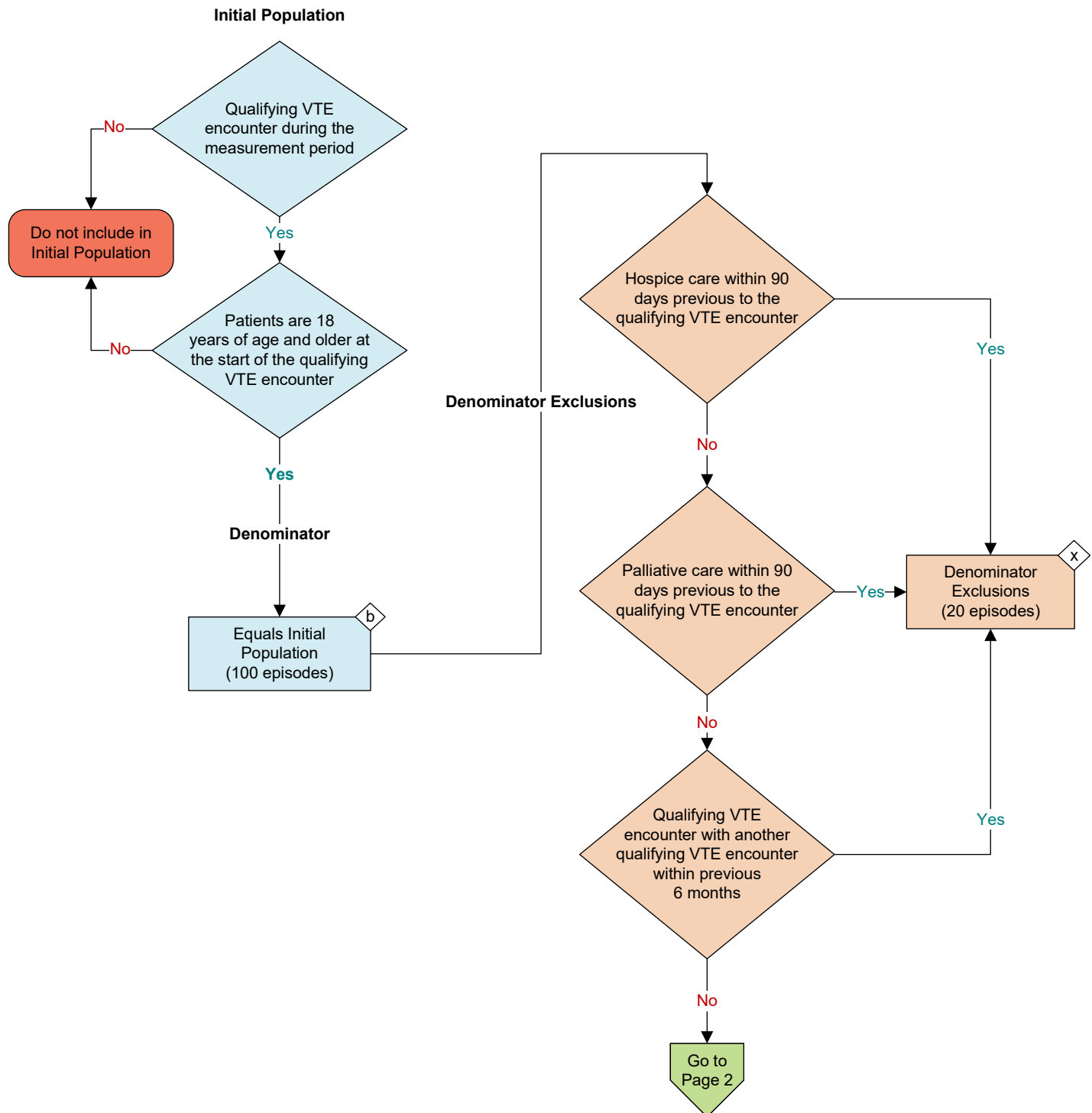
2026 eCQM Flow
eCQM Identifier: CMS1173v1

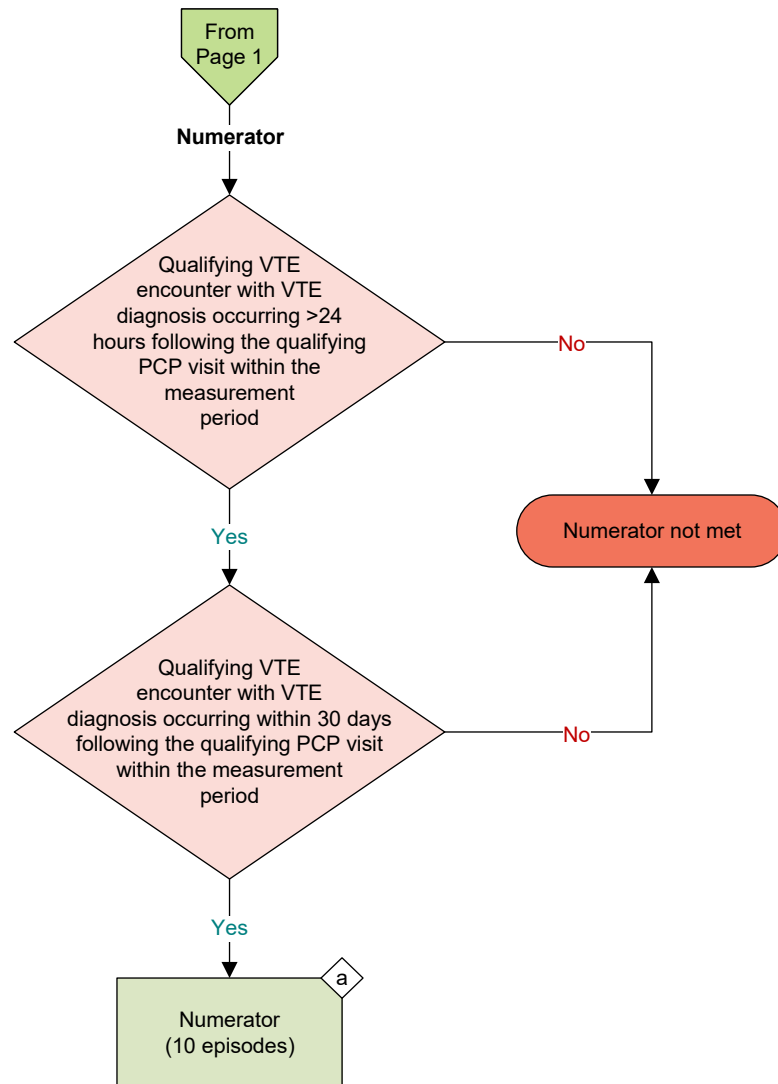
NOTE: This flow diagram represents an overview of population criteria requirements. **Refer to the eCQM specification for a complete list of data elements included in this measure and required for submission.**

Diagnostic Delay of Venous Thromboembolism in Primary Care

Percentage of episodes for patients 18 years of age and older with documented Venous Thromboembolism (VTE) symptoms in the primary care setting and who had a diagnosis of VTE that occurs > 24 hours and within 30 days following the index primary care visit where symptoms for the VTE were first present

This eCQM is an episode-based measure





Performance Rate =

Sample Calculation

$$\frac{\text{Numerator (a = 10 episodes)}}{\text{Denominator (b = 100 episodes) - Denominator Exclusions (x = 20 episodes)}} = \frac{10}{80} = 13 \%$$

eCQM Identifier: CMS1173v1**eCQM Title: Diagnostic Delay of Venous Thromboembolism in Primary Care**

NOTE: This flow diagram represents an overview of population criteria requirements. Refer to the eCQM specification for a complete list of data elements included in this measure and required for submission.

Description: Percentage of episodes for patients 18 years of age and older with documented Venous Thromboembolism (VTE) symptoms in the primary care setting and who had a diagnosis of VTE that occurs > 24 hours and within 30 days following the index primary care visit where symptoms for the VTE were first present.

This eCQM is an episode-based measure.

eCQM Flow Narrative**Initial Population**

Start by identifying the Initial Population which includes all qualified VTE encounters in which the patient was aged 18 or older at the start of the qualified VTE encounter.

Denominator

The Denominator equals the Initial Population. In the sample calculation provided at the end of the eCQM flow, the Denominator is equal to 100 episodes (i.e., qualified VTE encounters).

Denominator Exclusions

The Denominator Exclusions criteria identify a subset of the Denominator population by excluding qualified VTE encounters for patients who are in hospice care or palliative care within the previous 90 days or have another qualified VTE encounter within the previous 6 months. In the sample calculation provided at the end of the eCQM flow, the Denominator Exclusions are equal to 20 episodes.

Numerator

The Numerator criteria identify a subset of the Denominator population (that did not meet the Denominator Exclusions criteria) by including qualified VTE encounters in which the VTE diagnosis occurs greater than 24 hours and within 30 days following the qualifying PCP visit within the measurement period. In the sample calculation provided at the end of the eCQM flow, the Numerator is equal to 10 episodes.

Sample Calculation

A sample calculation is provided to help determine how the measure performance rate is derived. The measure performance rate is calculated by dividing the Numerator (total equals 10 episodes) by the difference between the Denominator (total equals 100 episodes) and the Denominator Exclusions (total equals 20 episodes), which is equal to a score of 13 percent.