

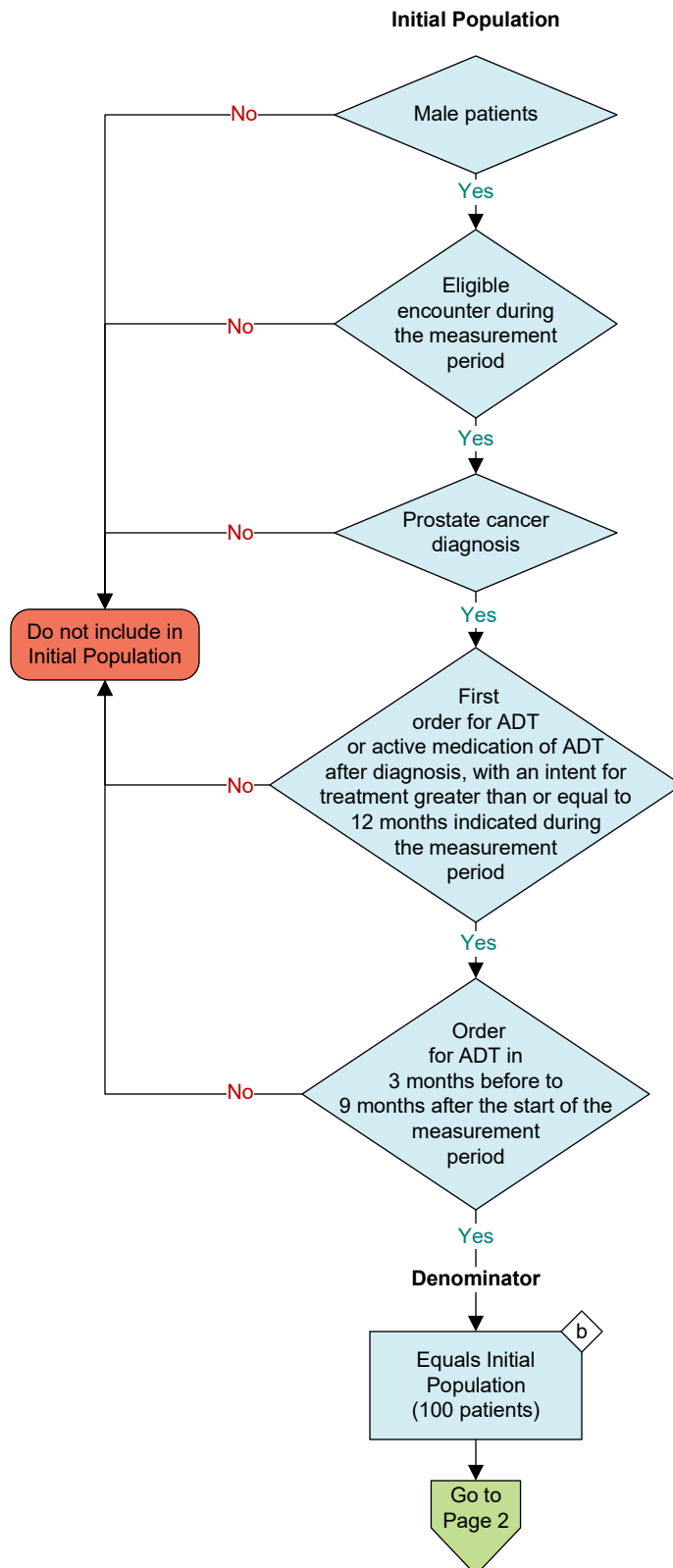
**2026 eCQM Flow**  
**eCQM Identifier: CMS645v9**

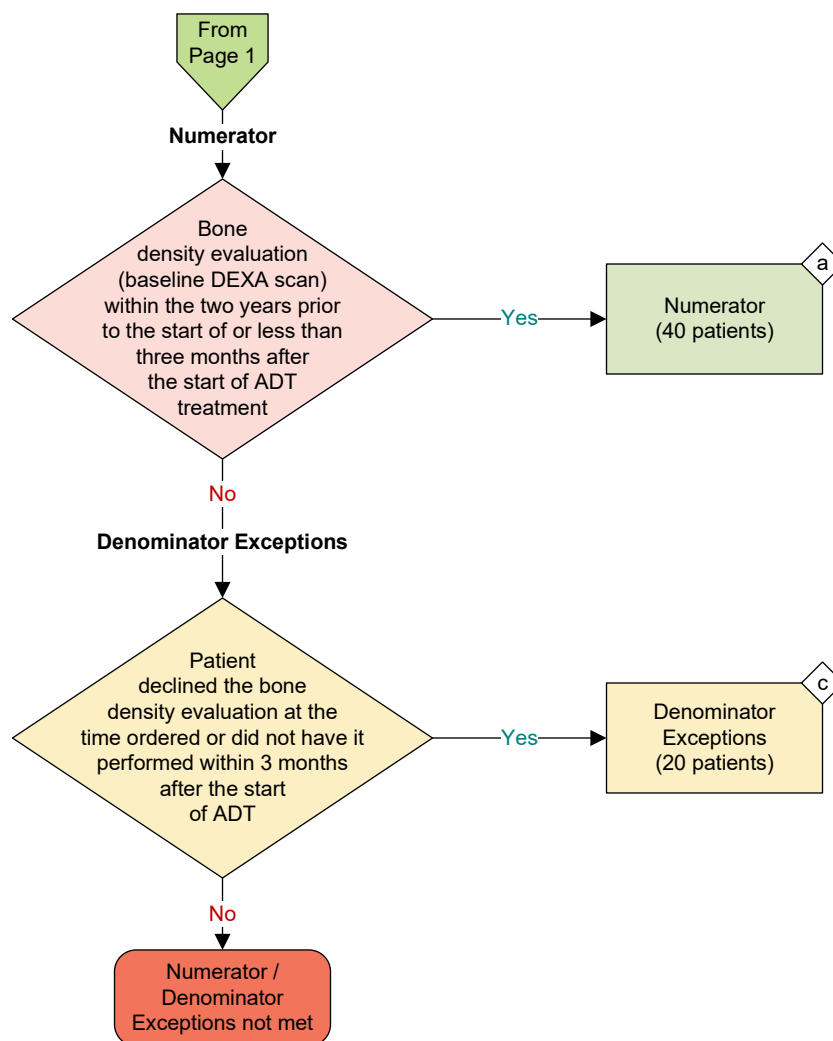
**NOTE:** This flow diagram represents an overview of population criteria requirements. **Refer to the eCQM specification for a complete list of data elements included in this measure and required for submission.**

**Bone Density Evaluation for Patients with Prostate Cancer and Receiving Androgen Deprivation Therapy**

Percentage of patients determined as having prostate cancer who are currently starting or undergoing androgen deprivation therapy (ADT), for an anticipated period of 12 months or greater and who receive an initial bone density evaluation. The bone density evaluation must be prior to the start of ADT or within 3 months of the start of ADT.

**This eCQM is an patient-based measure**





**Performance Rate =**

**Sample Calculation**

$$\frac{\text{Numerator (a = 40 patients)}}{\text{Denominator (b = 100 patients) - Denominator Exceptions (c = 20 patients)}} = \frac{40}{80} = 50\%$$

**eCQM Identifier: CMS645v9****eCQM Title: Bone Density Evaluation for Patients with Prostate Cancer and Receiving Androgen Deprivation Therapy**

**NOTE:** This flow diagram represents an overview of population criteria requirements. Refer to the eCQM specification for a complete list of data elements included in this measure and required for submission.

**Description:** Percentage of patients determined as having prostate cancer who are currently starting or undergoing androgen deprivation therapy (ADT), for an anticipated period of 12 months or greater and who receive an initial bone density evaluation. The bone density evaluation must be prior to the start of ADT or within 3 months of the start of ADT.

**This eCQM is a patient-based measure.**

**eCQM Flow Narrative****Initial Population**

Start by identifying the Initial Population, which includes male patients with an eligible encounter during the measurement period, a diagnosis of prostate cancer, a first order for ADT or an active medication of ADT after diagnosis with an intent for treatment greater than or equal to 12 months during the measurement period, and an order for ADT in 3 months before to 9 months after the start of the measurement period.

**Denominator**

The Denominator equals the Initial Population. In the sample calculation provided at the end of the eCQM flow, the Denominator is equal to 100 patients.

**Numerator**

The Numerator criteria identify a subset of the Denominator population by including patients with a bone density evaluation (baseline DEXA scan) within the two years prior to the start of or less than three months after the start of ADT treatment. In the sample calculation provided at the end of the eCQM flow, the Numerator is equal to 40 patients.

**Denominator Exceptions**

The Denominator Exceptions criteria identify patients from the Denominator that did not meet the Numerator population criteria because patient declined a bone density evaluation at the time ordered or did not have it performed within 3 months after the start of ADT. In the sample calculation provided at the end of the eCQM flow, the Denominator Exceptions are equal to 20 patients.

**Sample Calculation**

A sample calculation is provided to help determine how the measure performance rate is derived. The measure performance rate is calculated by dividing the Numerator (total equals 40 patients) by the difference between the Denominator (total equals 100 patients) and the Denominator Exceptions (total equals 20 patients), which is equal to a score of 50 percent.