



Transforming Clinical Practice Initiative: Support and Alignment Networks 2.0



Applicant Information Session
Date: 7/6/16

*Better Health, Better Care, and
Lower Cost*

Questions

- Please type your questions into the “chat box”
- Answers to the Frequently Asked Questions are being updated on the Center for Medicare and Medicaid Innovation website
- More detailed information related to this funding opportunity can be found in the funding opportunity announcement located on the Innovation Center website and grants.gov
- After the session, you can email questions to: transformation@cms.hhs.gov

Important Transforming Clinical Practice

- Transforming Clinical Practice Initiative Website: <http://innovation.cms.gov/initiatives/Transforming-Clinical-Practices/>
- Support and Alignment Network 2.0 <https://www.grantsolutions.gov/gs/preaward/previewPublicAnnouncement.do?id=56861>
- Acquisition Questions: transformation@cms.hhs.gov

Quality Payment Program Alignment with SAN 2.0

- SAN 2.0 represents a significant enhancement to the TCPI network expertise and capability to align with delivery system reform programs recently authorized under the Medicare Access and CHIP Reauthorization Act of 2015 (MACRA).
- SAN 2.0 awardees should ensure that assistance provided to clinicians and practices addresses MACRA and Medicare Incentive Payment System (MIPS) requirements.
- SAN 2.0 awardees' activities, coaching, and technical assistance should result in the rapid transition of practices through the five phases of transformation, resulting in lower total cost of care, higher quality of care in communities, and ultimately align practices to participate in APMs.

Context for Transforming Clinical Practice

- Passage of the Affordable Care Act in 2010 renewed efforts to improve our health care system
- Efforts have been guided by focus on **better health, better health care, and lower costs** through quality improvement
- Clinicians want to improve care for their patients and position their practices to thrive in a pay-for-value system
- Increasing accountabilities from care delivery reform programs (e.g., Medicare Shared Savings Program)
- About 16% (~185,000) of clinicians are currently participating in CMS advanced care delivery models
- With Innovation Center support, successful clinical practice leaders can support their peers with direct technical assistance to help them transform their practices

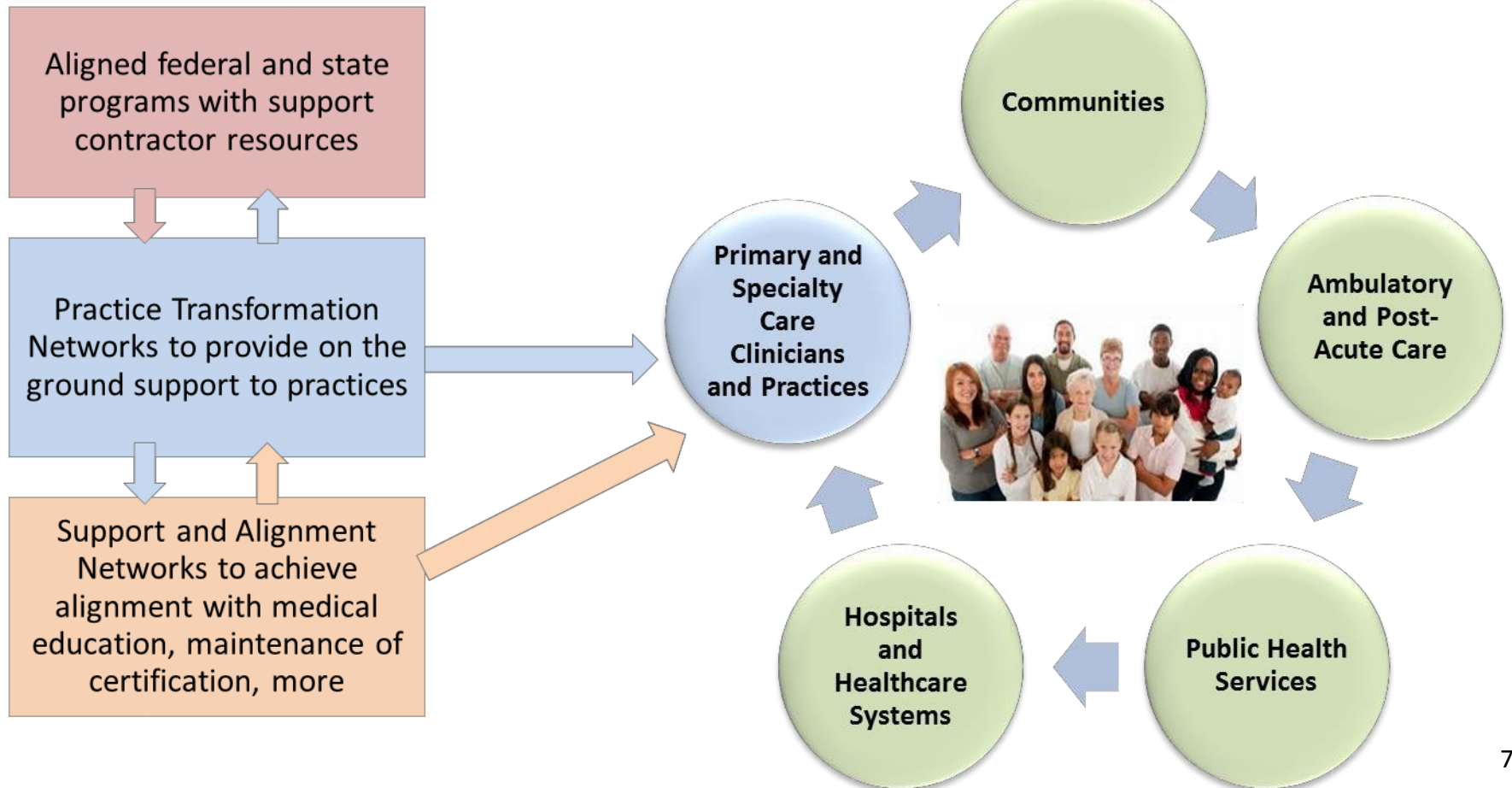
Transforming Clinical Practice Goals

- Support more than 140,000 clinicians in work to achieve practice transformation;
- Build the evidence base on practice transformation so that effective solutions can be scaled, if successful;
- Improving health outcomes for 5 million Medicare, Medicaid, and CHIP beneficiaries;
- Reduce unnecessary hospitalizations, and overutilization of other services for 5 million Medicare, Medicaid and CHIP beneficiaries;
- Sustain efficient care delivery for Medicare, Medicaid and CHIP beneficiaries by moving at least 75% of clinicians that complete the TCPI phases of transformation to participate in incentive programs and practice models that reward value upon completion of TCPI; and
- Generate savings to the federal government over a period of 4 years through reduced Medicare, Medicaid and CHIP expenditures. In addition, we believe commercial payers may experience savings as a result of this model.

Practice Transformation in Action

*Transforming Clinical Practice would employ a **three-prong approach** to national technical assistance.*

*This technical assistance would enable large-scale transformation of more than 140,000 clinicians' practices to deliver **better care and result in better health outcomes at lower costs.***



Transforming Clinical Practice Initiative



Set Aims



Use Data to Drive Care



Achieve Progress on Aims



Achieve Benchmark Status



Thrive as a Business via Pay-for-Value Approaches



Purpose of SAN 2.0

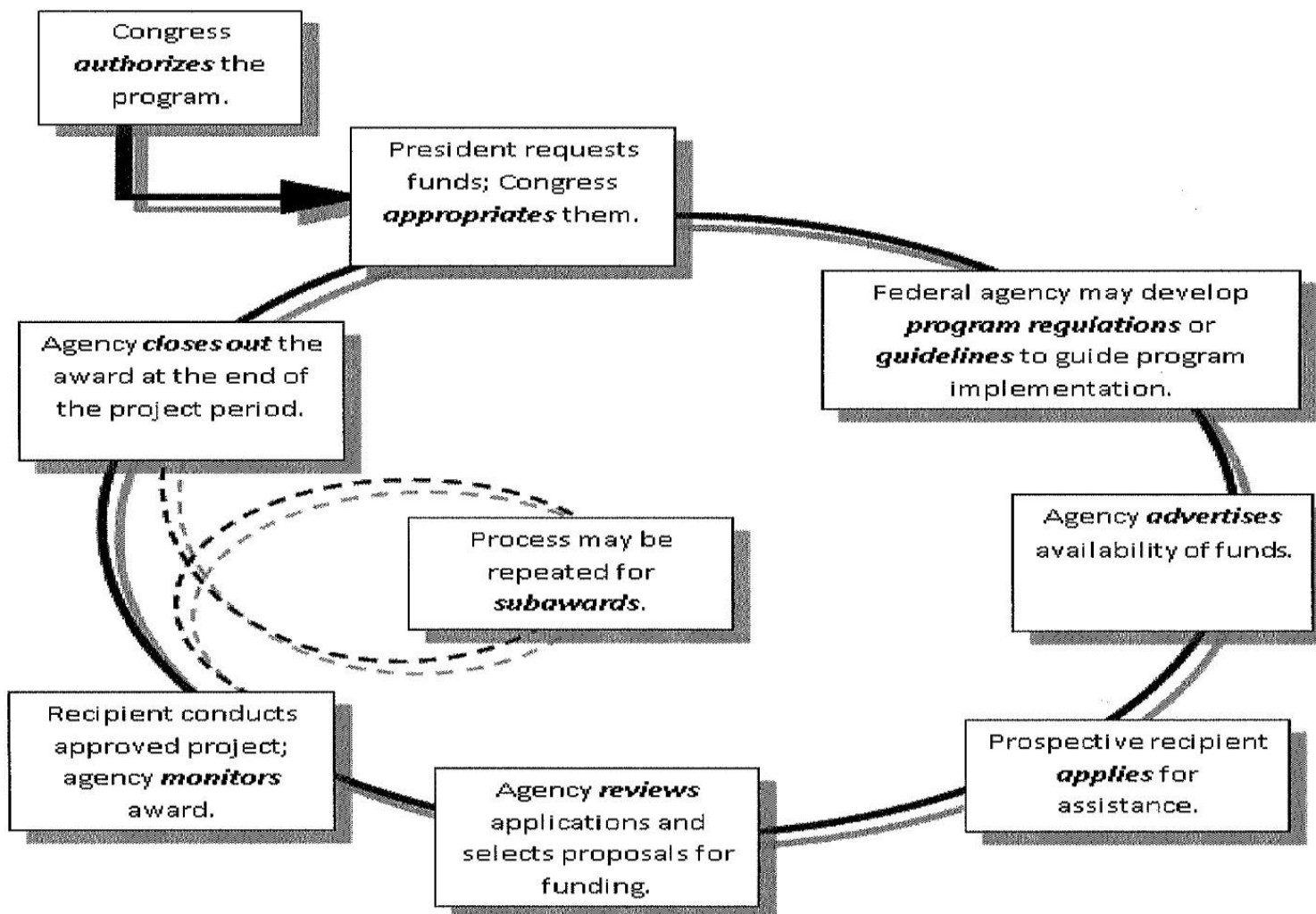
- Identify large numbers of clinicians and practices in advanced states of readiness through sound data analytics capabilities
- Enroll them into the TCPI, to provide them with tailored technical assistance
- Customize and align direct technical assistance and support services to these clinicians and practices' needs
- Provide coaching and technical assistance in rapid transition of practices through five phases of transformation
- Align clinicians and practices with the most suitable Alternative Payment Model options

Eligible Applicants

- Who should apply: Organizations including health care delivery systems and health care delivery plans
 - Provide quality improvement to large number of clinicians
 - Are multi-regional or national presence
 - Generate evidence based guidelines for clinical practices
 - Use measurements through clinical registries and EHR
 - Commit to improving safety and person and family engagements
- Medical professional associations and specialty societies
- Signed commitment to enroll a minimum of 5,000 clinicians and practices in an advanced stage of readiness
- Committed to spreading transformation knowledge in support of the TCPI Goals

Note: Organizations that previously applied and/or were awarded a TCPI PTN or SAN may **NOT** apply for this FOA

Grant Award Process



Roles and Responsibilities

Grants Management Officer

Grants Management Specialist

Project or Program Officer

**Authorized Organizational
Representative**

Principal Investigator/Project Director

Governing Laws, Regulations, and Policies for Cooperative Agreements

Transforming Clinician Practice Initiative Authority	Applies to:
Section 1115A of the Social Security Act as added by § 3021 of the Affordable Care Act	Support and Alignment Networks SAN 2.0
Grants Policy	Applies to:
HHS Grants Policy Statement, Revised 01/07	HHS discretionary grants and cooperative agreement awards
2 CFR Part 215 and 45 CFR Part 74, Appendix E	Hospitals
48 CFR, Subpart 31.2	For-profit Organizations
OMB Omni Circular	

2 CFR Part 200

**Uniform Administrative Requirements, Cost Principles,
and Audit Requirements for Federal Awards**

Application and Submission Procedures

- All applicants must have a valid Employer Identification Number (EIN)/Taxpayer Identification Number (TIN).
- All applicants must have a Dun and Bradstreet (D&B) Data Universal Numbering System (DUNS) number to apply.
- All applicants must register in the System for Award Management (SAM) database to be able to submit an application.
- The Authorized Organizational Representative who will officially submit an application on behalf of the organization must register with Grants.gov for a username and password.

Application and Submission Procedures

Application Process

- The Cooperative Agreement Application for Support and Alignment Network (SAN) 2.0 is due July 11, 2016, 3:00PM Eastern Standard Time (Baltimore, MD)
- Application must be submitted in the required electronic-PDF format at <http://www.grants.gov>, no later than the deadline date
- Letters of Intent are due July 01, 2016
- Search for Application Packages by CFDA number: 93.639
- Specific instructions for applications can be found at Grants.gov.
- Anticipated Notice of Award is September 1, 2016

Application and Submission Procedures

Format Requirements

- **Applications must not be more than 30 pages in length, including the project abstract summary (restricted to one page).**
- The project abstract may be single-spaced.
- The project narrative must be double-spaced. This includes all components of the project narrative.
- The budget narrative may be single-spaced.
- Charts and tables may be single-spaced. Please refer to the FOA for charts and table format recommendations.
- **Font size must be no smaller than 12-point with an average character density no greater than 14 characters per inch (CPI) inclusive of charts and tables.**

Application and Submission Procedures

SAN 2.0 Application Package –

Refer to Funding Opportunity Announcement:

Appendix D. Application and Submission Information

Appendix E. Application Check-Off List Required Contents

Section V. Application and Submission Information

Standard Mandatory Forms

- SF 424: Official Application for Federal Assistance
 - Item 15 “Descriptive Title of Applicant’s Project, state the specific cooperative agreement opportunity for which you are applying “Transforming Clinical Practices – Support and Alignment Network”.
 - Item 19c, check “No”. Review by State Executive Order 12372 does not apply to this cooperative agreement funding opportunity.
- SF 424A: Budget Information Non-Construction
- SF 424B: Assurances – Non-Construction Programs
- SF LLL: Disclosure of Lobbying Activities

Application and Submission Procedures

Project Abstract Summary

A one-page summary is found in the Grants Application Package at www.Grants.gov. TCPI Project Abstract Summary and complete the form.

Goals of the project

- Total budget
- Number of projected participants
- Description of how the funds will be used

Project Narrative

In the Grants Application Package found at www.Grants.gov, select the Project Narrative Attachment Form and “Add Mandatory Project Narrative File”.

The Project Narrative uploaded file will contain all the required components as stated in the FOA:

- Establish Clear Linkage of Proposed Work to Quantitative Results on Aim
- Support and Alignment Networks (SANs) Achievement of Milestones
- Data Strategy
- Organizational Capacity and Project Management Plan

Application and Submission Procedures

Budget Narrative

Refer to the cost principles at ***Title 2 CFR Part 200, Subpart E; Section V.4 Funding Restrictions*** and ***Appendix C: Sample Budget and Narrative Justifications*** in the FOA for detailed cost tables and breakdown for each SF 424A line item. Locate Budget Narrative Form in the Grants Application Package www.Grants.gov; select the Budget Narrative Form and “Add Mandatory Budget Narrative”.

Focus on operational implementation of the SAN 2.0 model

- Costs must be allowable
- Costs must be reasonable
- Costs must be allocable
- Costs must be necessary

Cost Principles:	Applies to:
2 CFR Part 220	Institutions of Higher Education
2 CFR Part 225	State, Local and Indian Tribal Governments
2 CFR Part 230	Nonprofit Organizations
2 CFR Part 215 and 45 CFR Part 74, Appendix E	Hospitals
48 CFR, Subpart 31.2	For-profit Organizations

Application Process, Review, and Award

- Go to Grants.gov to view the full funding opportunity announcement and application kit.
- Submit application at Grants.gov no later than **July 11, 2016**.
- Applications downloaded from Grants.gov into GrantSolutions.
- Applicant review process begins.
- Program produces decision memo recommending selected applicants.
- CMS begins budget negotiations with selected applicants based on the submitted SF 424A, budget tables, and narratives.
- Anticipated Issuance of Notices of Award: **September 1, 2016**.
- Anticipated Period of Performance: **September 21, 2016 – September 20, 2019**.

Grant Management

- GrantSolutions
- Electronic file format of application
- System accessible by CMS and applicant
 - Issue Notice of Award
 - Grant Notes (correspondence)
 - Amendments (budgets, administration)
 - Grant Closeout

FAQ

- **Support and Alignment Networks 2.0**
- **Q: What's the total funding amount for the Support and Alignment Network 2.0 cooperative agreements?**
- A: CMS expects to award up to a total of \$10 million over three years, depending on availability of funds.
- **Q: How much funding is available for each award under these cooperative agreements?**
- A: CMS expects to make awards ranging from approximately \$500,000 to \$2.5 million each to cover a three-year period of performance.
- **Q: Are Letters of Intent required? If so, when is the Letters of Intent due?**
- A: Yes, a Letter of Intent is required. The letter of intent is due on July 1, 2016. Letters of Intent should be submitted to transformation@cms.hhs.gov.

FAQ

- **Q: Who is eligible to apply to be a Support and Alignment Network 2.0?**
- A: Eligible applicants are organizations including health care delivery systems and health care delivery plans that: 1) presently provide quality improvement support to a large number of clinicians; 2) are multi-regional or national in scope; 3) are involved in generating evidence-based guidelines for clinical practice; 4) are effectively using measurement through clinical registries and electronic health records; and 5) are committed to expanding action to improve safety and person and family engagement. Medical professional associations and specialty societies may also apply. Competitive applications will have signed commitments to enroll a minimum of 5,000 eligible clinicians.

- **Q: When is the application due date?**
- A: The application due date is July 11, 2016. Applications must be submitted through www.grants.gov by 3 p.m. Eastern Standard Time on the due date.

- **Q: What is the maximum length of the application?**
- A: The application should not exceed 30 pages.

- **Q: Can current Practice and Transformation Networks and Support and Alignment Networks apply to be a Support and Alignment Network 2.0?**
- A: Organizations that have current Practice Transformation Network and Support and Alignment Network awards may not apply for the Support and Alignment Network 2.0 Funding Opportunity Announcement.

- **Q: What is the performance period for the Support and Alignment Network 2.0?**
- A: The anticipated period of performance is September 21, 2016 – September 20, 2019.

FAQ

- **Q: How many Support and Alignment Network 2.0 cooperative agreement awards will be funded?**
- A: CMS expects to award up to five Support and Alignment Network 2.0 cooperative agreements.

- **Q: Is CMS accepting any waivers?**
- A: As identified in the FOA and for this model, the Secretary is not issuing any waivers of the fraud and abuse provisions in sections 11128A, 1128B, and 1877 of the SSA or of any other Medicare or Medicaid law. As noted, all awardees, sub-awardees and other relevant individuals or entities must comply with all applicable laws and regulations.

- **Q: Can a clinician practice apply for a Support and Alignment Network 2.0 cooperative agreement award?**
- A: No. Clinicians are not eligible to apply for funding under the cooperative agreements. However, clinicians are highly encouraged to participate in the program through partnerships with the networks.

- **Q: Is CMS announcing a funding opportunity for additional Practice Transformation Networks?**
- A: No, not at this time.

FAQ

Support and Alignment Networks 2.0 Applicant Information Session (June 28, 2016)

- **Q: How does CMS define multiregional impact?**
- A: Multiregional refers to more than one of the Health and Human Services regions.
<http://www.hhs.gov/about/agencies/regional-offices/index.html#>.
- **Q: Would participation in the Medicaid Delivery System Reform Incentive program in New York make a practice ineligible to participate in TCPI?**
- A: These clinicians are eligible to participate in TCPI.
- **Q: If an organization applied for TCPI PTN last year but WAS NOT awarded, is that organization eligible to apply for SAN 2.0?**
- A: Yes, organizations not receiving an award previously for a PTN or SAN can apply for SAN 2.0. The organization must comply with the eligibility requirements of SAN 2.0.

FAQ

Support and Alignment Networks 2.0 Applicant Information Session (June 28, 2016)

- **Q: Is the minimum number of clinicians to be served by any one grantee 5,000? What if your proposal serves less than 5,000 clinicians?**
- A: In accordance with the FOA, competitive applications will have signed commitments to enroll a minimum of 5,000 eligible clinicians and their practices that are in advanced states of readiness to deliver high quality care at lower costs (e.g. transformation Phases 4 and 5) that are not currently enrolled in a PTN.
- **Q: Would a health analytics firm be considered? The firm has ability to model VBP models to access readiness and select best VBP model?**
- A: Eligible applicants are organizations including health care delivery systems and health care delivery plans that: 1) presently provide quality improvement support to a large number of clinicians; 2) are multi-regional or national in scope; 3) are involved in generating evidence-based guidelines for clinical practice; 4) are effectively using measurement through clinical registries and electronic health records; and 5) are committed to expanding action to improve safety and person and family engagement. Medical professional associations and specialty societies may also apply. SANs are required to enroll 5,000 clinicians.

FAQ

Support and Alignment Networks 2.0 Applicant Information Session (June 28, 2016)

- **Q: Application is limited to 30 pages. We want to partner with existing SAN grantees who will be giving us letters of support. Do those letters count in the 30 pages?**
- A: Letters of support are not required, and attachments beyond the page limitation and required standard forms are not accepted.

- **Q: How is this grant different from the grant to Help Small Practices Prepare for the Quality Payment Program?**
- A: SAN 2.0 is not limited to small, rural, medically underserved practices.

- **Q: Our organization has several thousand clinician members, do we need to sign them up?**
- A: In accordance with the FOA, competitive applications will have signed commitments to enroll a minimum of 5,000 eligible clinicians and their practices that are in advanced states of readiness to deliver high quality care at lower costs (e.g. transformation Phases 4 and 5) that are not currently enrolled in a PTN.

- **Q: Are grant recipients allowed to augment their initiative and add additional support not previously delineated in the grant proposal or must they restrict it to the items listed in the grant proposal?**
- A: Organizations that have current Practice Transformation Network and Support and Alignment Network awards may not apply for the Support and Alignment Network 2.0 Funding Opportunity Announcement.

Important Transforming Clinical Practice

- Transforming Clinical Practice Initiative Website: <http://innovation.cms.gov/initiatives/Transforming-Clinical-Practices/>
- Support and Alignment Network 2.0 <https://www.grantsolutions.gov/gs/preaward/previewPublicAnnouncement.do?id=56861>
- Acquisition Questions: transformation@cms.hhs.gov