

# Emergency Triage, Treat, and Transport (ET3) Model

## ET3 Model Medical Triage Line

### Notice of Funding Opportunity (NOFO)

# Eligibility Factsheet



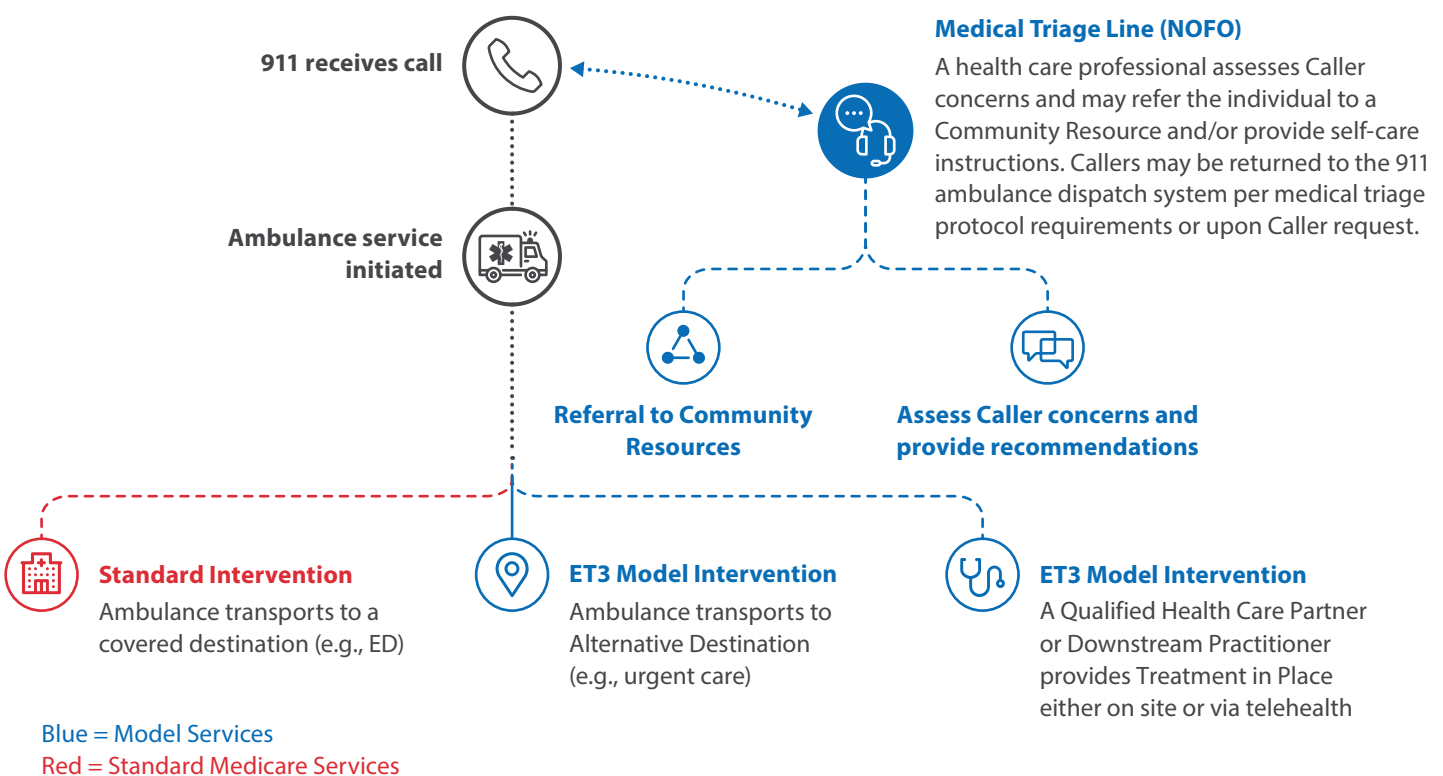
March 2021

The Centers for Medicare & Medicaid Services (CMS) released a Notice of Funding Opportunity (NOFO) for the triage intervention of the Emergency Triage, Treat, and Transport (ET3) Model. CMS will award, through a competitive process, up to 40, two-year cooperative agreements for eligible applicants to develop or expand a Medical Triage Line. This document provides a high-level overview of the funding opportunity for interested applicants. Please note that this document is not intended to serve as a comprehensive list of eligibility requirements; potential applicants should refer to the NOFO for more information.

## Overview

The ET3 Model consists of three interventions: the Transport to an Alternative Destination and Treatment in Place interventions described in the Request for Applications, and the triage intervention described in the NOFO. Together, these interventions make up a comprehensive model for potentially improving the quality of care and lowering costs to Medicare by reducing avoidable transports to hospital emergency departments (EDs) and avoidable inpatient admissions.

A Medical Triage Line funded through the ET3 Model NOFO will allow existing Public Safety Answering Points (PSAPs) to redirect callers with non-emergency conditions to appropriate care alternatives.



Triage Line Staff will recommend **Community Resources** that Callers may contact for appropriate care as alternatives to sending the Caller to the ED. Community resources may include, but are not limited to:

- Urgent care centers
- Primary care centers
- Behavioral health centers
- Substance use disorder services
- State/local public health agencies
- Foodbanks
- Homeless or other temporary shelters

# Emergency Triage, Treat, and Transport (ET3) Model ET3 Model Medical Triage Line Notice of Funding Opportunity (NOFO) Eligibility Factsheet



**ET3 Model**  
Emergency Triage, Treat,  
and Transport Model

## Eligibility

**Who can apply?** An entity must meet the following criteria in order to be eligible to apply for this NOFO:

- State or local government, their Designee, or other entity that operates or has authority over a PSAP
- Located in a Geographic Region where ambulance suppliers and providers have been selected to participate in the ET3 Model
- Applicants must propose to operate the Medical Triage Line in a Geographic Region that includes at least one ZIP Code of a Participant's Model Region.

A list of Participants and the regions where the ET3 Model will be implemented can be found on the ET3 Model website <https://innovation.cms.gov/initiatives/et3/>.

## Staff Requirements

**Who staffs the Medical Triage Line?** Triage Line Staff must be health care professionals, defined as a registered nurse or an individual who holds an equivalent or more advanced clinical licensure (e.g., clinical nurse specialist, certified nurse practitioner, physician assistant, or physician (MD or DO)).

## Application Submission

**How do I apply?** All application materials are available on [www.grants.gov](http://www.grants.gov) and applications must be submitted electronically through that website. Application and submission information can be found in Section D and Appendix II of the NOFO.

Applications must be submitted electronically through [www.grants.gov](http://www.grants.gov) by **May 11, 2021, at 3:00 PM ET**.

## NOFO Timeline

The following outlines key NOFO milestones. A link to the ET3 Model NOFO, as well as additional resources, can be found on the [ET3 Model website](https://innovation.cms.gov/initiatives/et3/).



If you have any questions pertaining to the NOFO application, please email [ET3Model@cms.hhs.gov](mailto:ET3Model@cms.hhs.gov) and include "NOFO Inquiry" in the subject line. Please visit the ET3 Model website <https://innovation.cms.gov/initiatives/et3/> for any other ET3 Model news or information.