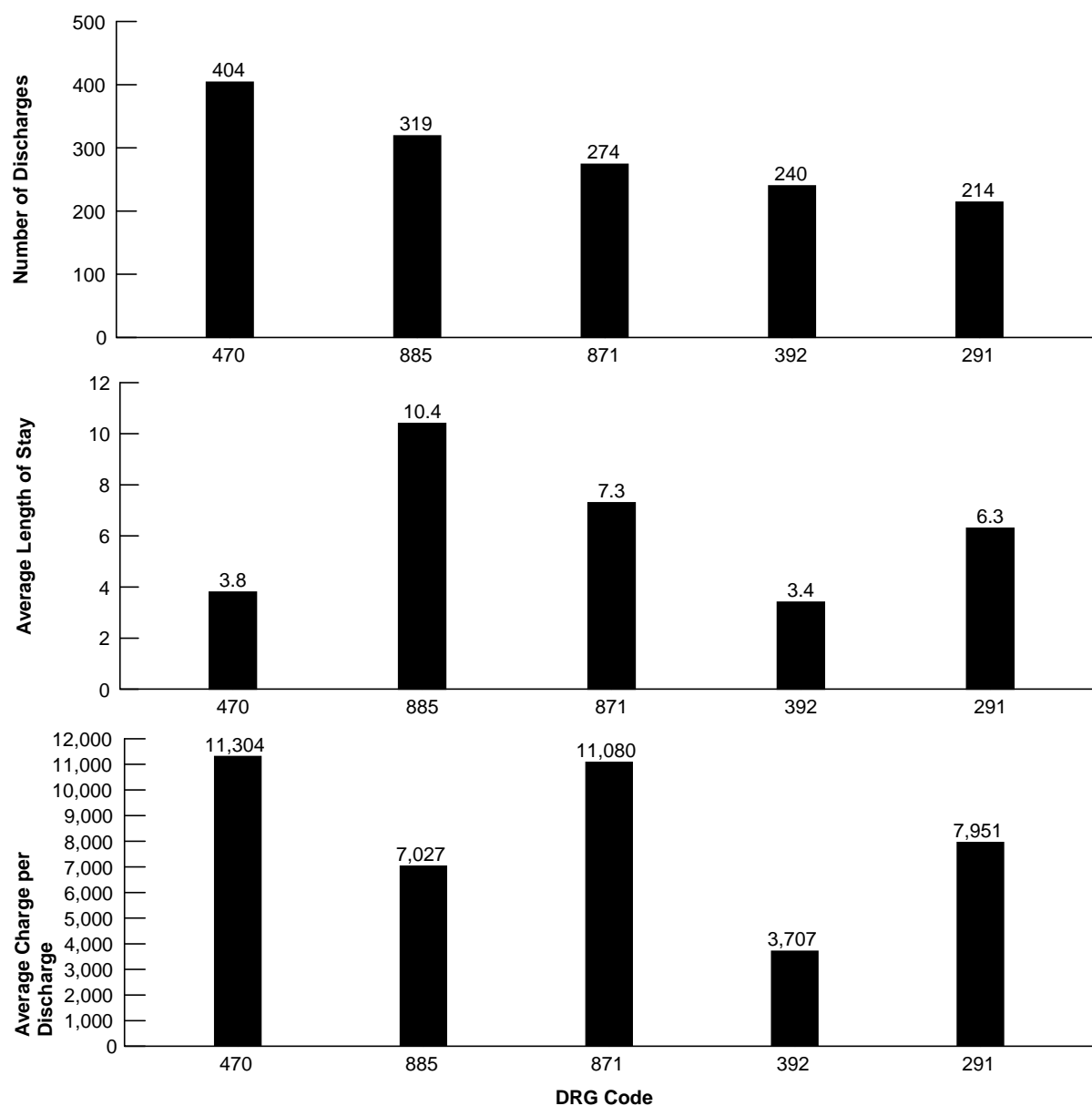


Figure 5.5
Five Most Frequent Medicare Diagnosis-Related Groups
(DRGs) for Beneficiaries Discharged from Short-Stay
Hospitals: Calendar Year 2008



NOTE: DRG codes are as follows: major joint replacement or reattachment of lower extremity without major complications and comorbidities (mcc), 470; psychoses, 885; septicemia or severe sepsis without mechanical ventilation 96+ hours with mcc, 871; esophagitis, gastroent & misc digest disorders without mcc, 392; heart failure & shock with mcc, 291.

SOURCE: Centers for Medicare & Medicaid Services, Office of Information Services: Data from the Medicare Data Extract System; data development by the Office of Research, Development, and Information.